

DRAWING NUMBER

000042

DRAWING NUMBER

000042

DRAWING NUMBER

000042

DRAWING NUMBER

000042

PLAN HOLD CORPORATION • IRVINE, CALIFORNIA

PLAN HOLD CORPORATION • IRVINE, CALIFORNIA

PLAN HOLD CORPORATION • IRVINE, CALIFORNIA

PLAN HOLD CORPORATION • IRVINE, CALIFORNIA

REORDER BY NUMBER 0175AR

REORDER BY NUMBER 0175AR

REORDER BY NUMBER 0175AR

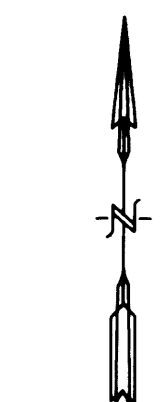
REORDER BY NUMBER 0175AR

POSITION EDGE OF PRINT ON THIS LINE

POSITION EDGE OF PRINT ON THIS LINE

POSITION EDGE OF PRINT ON THIS LINE

POSITION EDGE OF PRINT ON THIS LINE

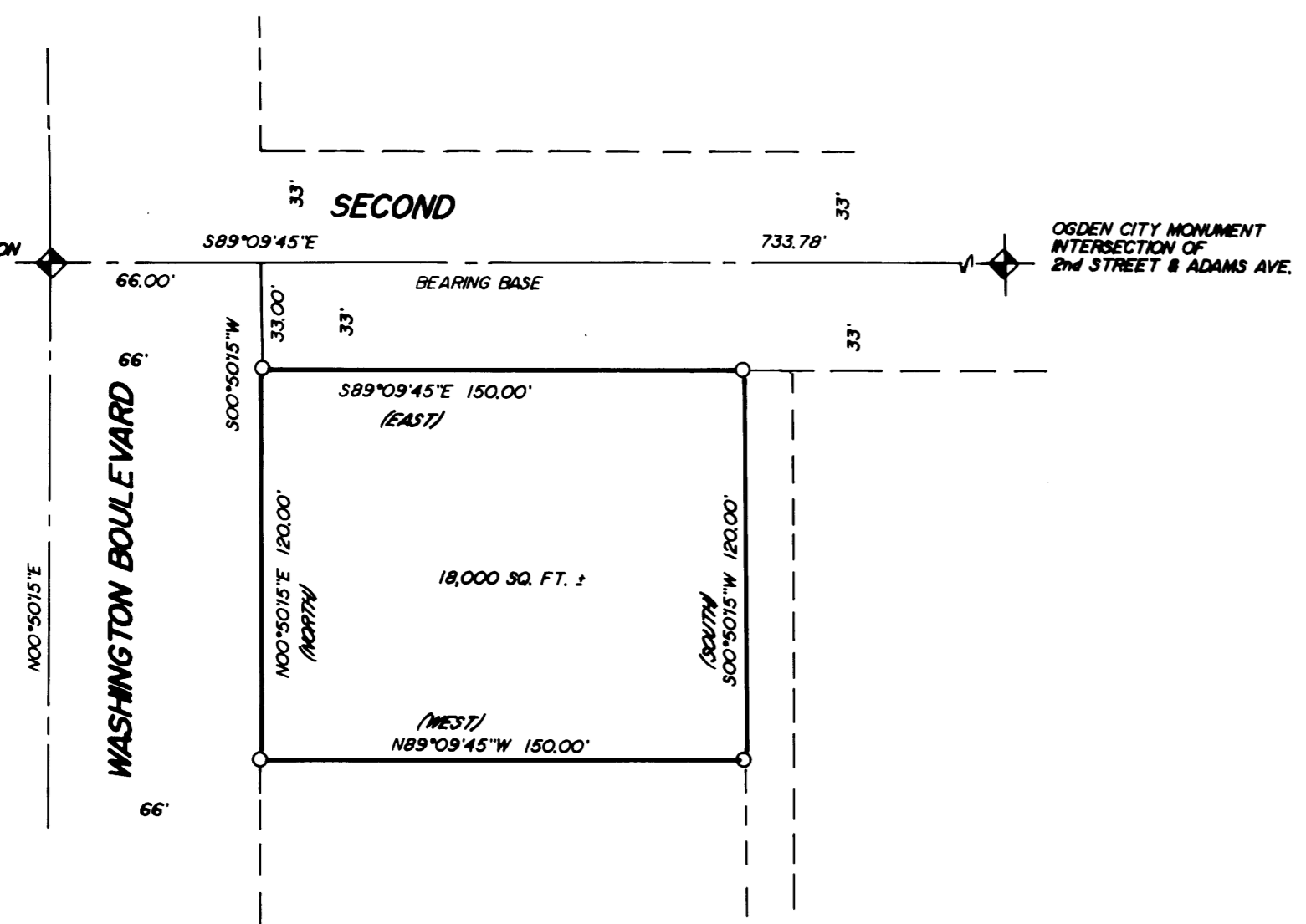


SCALE: 1" = 50'

LEGEND:
O SET #5 CAPPED REBAR 24" LONG

CAP DETAIL

MT. WEST SURV.
ROY, UT.



NOTE:
RECORDED BEARINGS ARE SHOWN IN PARENTHESES.

BOUNDARY DESCRIPTION

BEING A PART OF THE NE1/4 OF SECTION 17, T6N, R1W, S.L.B. & M., AND DESCRIBED AS FOLLOWS:
BEGINNING AT THE INTERSECTION OF THE SOUTH LINE OF SECOND STREET AND THE EAST LINE OF WASHINGTON BOULEVARD, SAID INTERSECTION BEING S. 89 DEG. 09 MIN. 15 SEC. E., 66.00 FEET AND S. 00 DEG. 50 MIN. 15 SEC. W., 33.00 FEET FROM THE OGDEN CITY MONUMENT AT THE INTERSECTION OF SECOND STREET AND WASHINGTON BOULEVARD AND RUNNING:
THENCE S. 89 DEG. 09 MIN. 45 SEC. E., ALONG THE SOUTH LINE OF SECOND STREET, 150.00 FEET;
THENCE S. 00 DEG. 50 MIN. 15 SEC. W., 120.00 FEET;
THENCE N. 89 DEG. 09 MIN. 45 SEC. W., 150.00 FEET, TO THE EAST LINE OF WASHINGTON BOULEVARD;
THENCE N. 00 DEG. 50 MIN. 15 SEC. E., ALONG SAID EAST LINE, 120.00 FEET TO THE POINT OF BEGINNING.
CONTAINS 18,000 SQUARE FEET MORE OR LESS

NARRATIVE REPORT OF SURVEY

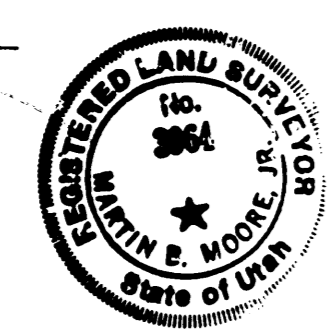
THE PURPOSE OF THIS SURVEY WAS TO ESTABLISH LINES OF OWNERSHIP ON THE GROUND.
OGDEN CITY MONUMENTS WERE USED AS CONTROL, AND RESEARCH SHOWS THEM TO BE SUFFICIENT FOR SUCH. PROPORTIONMENT OF MONUMENT DISTANCES WAS NOT USED, AS THE CONVEYANCES WERE SEQUENTIAL. MONUMENTS SET ON ALL CORNERS AS SHOWN.

NOTE:
THIS PLAT IS FOR THE EXCLUSIVE USE OF THE PERSON FOR WHOM IT IS PREPARED, AND ONLY FOR THE PURPOSE HEREON EXPRESSED.

SURVEYORS CERTIFICATE

I, MARTIN B. MOORE JR., LICENSED LAND SURVEYOR NO. 3964, AS PRESCRIBED BY THE LAWS OF THE STATE OF UTAH, DO HEREBY CERTIFY THAT THIS SURVEY WAS MADE AT THE REQUEST OF MAVERIK COUNTRY STORES INC., AND ON BEHALF OF MOUNTAIN WEST PROFESSIONAL LAND SURVEYORS P.C., AND IS TRUE AND CORRECT TO THE BEST OF MY KNOWLEDGE AND BELIEF.

MARTIN B. MOORE JR.



RECEIVED

OCT 26 1987

Weber County Surveyor

PROPERTY SURVEY
for
MAVERIK COUNTRY STORES INC.
A PART OF THE NE1/4 OF SECTION 17, T6N, R1W, S.L.B. & M.
Date 9-23-87 No 87-3001 Drawn E.E.S. Ckd M.B.M.
MOUNTAIN WEST PROFESSIONAL LAND SURVEYORS, P.C.
Roy, Utah

000042