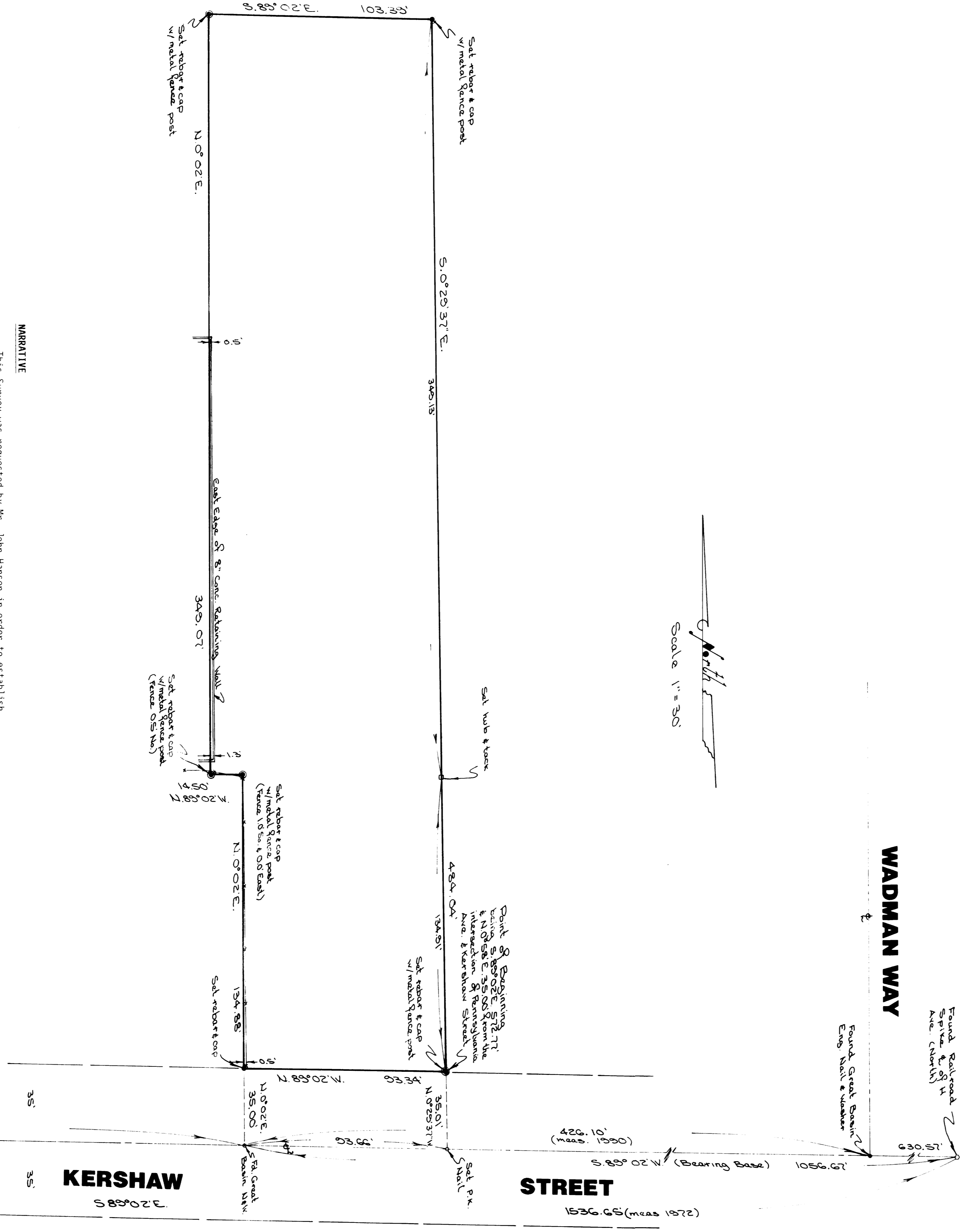


PLAN HOLD CORPORATION • IRVINE, CALIFORNIA
REORDER BY NUMBER 0154P
POSITION (SEE IF PART OR INCL.)

PLAN HOLD CORPORATION • IRVINE, CALIFORNIA
REORDER BY NUMBER 0154P
POSITION (SEE IF PART OR INCL.)

PLAN HOLD CORPORATION • IRVINE, CALIFORNIA
REORDER BY NUMBER 0154P
POSITION (SEE IF PART OR INCL.)

PLAN HOLD CORPORATION • IRVINE, CALIFORNIA
REORDER BY NUMBER 0154P
POSITION (SEE IF PART OR INCL.)



NARRATIVE
This Survey was requested by Mr. John Hansen in order to establish the Property Corners of a parcel to be sold. A railroad spike was found at the centerline of Kershaw Street and H Avenue (North) along with 2 nails along the centerline of Kershaw Street set by Great Basin Engineering. A line bearing North 89°02' West between the railroad spike and the existing nails was used as a basis of bearings. Corners were monumented as depicted on this drawing.

North
Scale 1" = 30'

PENNSYLVANIA AVE.

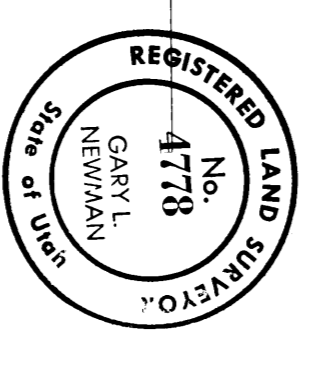
DESCRIPTION

A part of the Northwest Quarter of Section 31, Township 6 North, Range 1 West, Salt Lake Base and Meridian, U.S. Survey:
Beginning at a point on the North Line of Kershaw Street said point being South 89°02' East 572.77 feet and North 0°58' East 35.00 feet from the intersection of Pennsylvania Avenue and Kershaw Street, running thence North 89°02' West 93.34 feet along the North line of Kershaw Street, thence North 0°02' East 134.88 feet, thence North 89°02' West 14.50 feet; thence North 0°02' East 349.07 feet, thence South 89°02' East 103.39 feet; thence South 0°29'37" East 484.04 feet to the point of beginning.
Contains 49,150 Square Feet
Or 1.128 Acres

CERTIFICATION

I, Gary L. Newman, do hereby certify that I am a Registered Land Surveyor, and that I hold Certificate No. 4778, as prescribed by the Laws of the State of Utah, and I have made a survey of the above described property. I further certify that the above plat correctly shows the true dimensions of the property surveyed.

Date 10-15-90 Gary L. Newman



RECEIVED
DEC 07 1990

GREAT BASIN ENGINEERING, INC.
CONSULTING ENGINEERS & SURVEYORS
OGDEN & SALT LAKE CITY, UTAH

PROPERTY SURVEY
for
JOHN HANSEN & ASSOC
A PART OF THE NW 1/4 OF SEC. 31, T6N, R1W, S18EM

DATE: OCTOBER 1990
SCALE: 1" = 30'
JOB NO: 75-90-71