

DRAWING NUMBER
000430

PLAN HOLD CORPORATION • IRVINE, CALIFORNIA
REORDER BY NUMBER 075AR
POSITION (TOP OF PRINT ON THIS LINE)

DRAWING NUMBER
000430

PLAN HOLD CORPORATION • IRVINE, CALIFORNIA
REORDER BY NUMBER 075AR
POSITION (TOP OF PRINT ON THIS LINE)

DRAWING NUMBER
000430

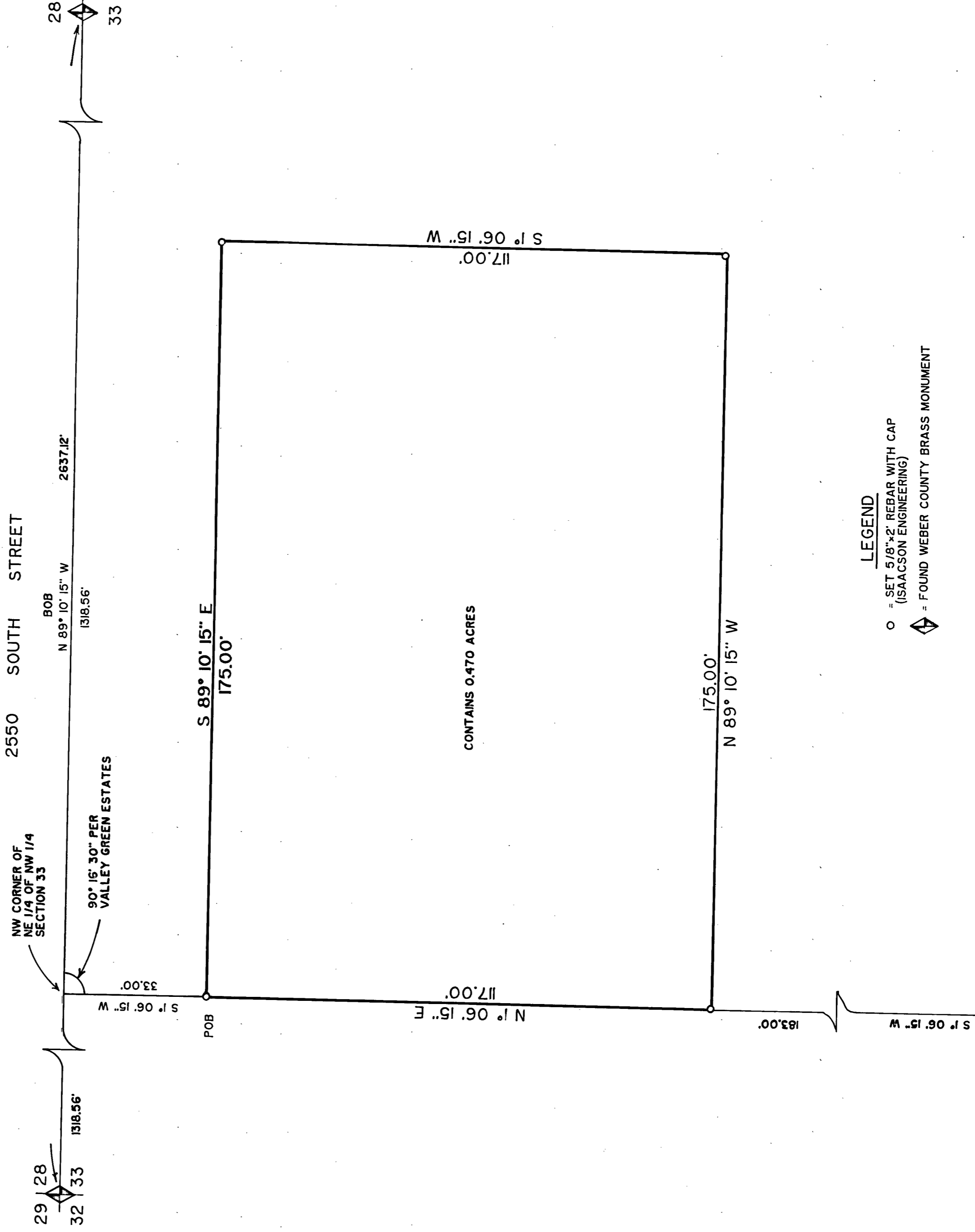
PLAN HOLD CORPORATION • IRVINE, CALIFORNIA
REORDER BY NUMBER 075AR
POSITION (TOP OF PRINT ON THIS LINE)

DRAWING NUMBER
000430

PLAN HOLD CORPORATION • IRVINE, CALIFORNIA
REORDER BY NUMBER 075AR
POSITION (TOP OF PRINT ON THIS LINE)



A PART OF THE NW 1/4 OF SEC 33
T 6N, R 2W, S188M
TAYLOR, WEBER COUNTY, UTAH
SCALE 1" = 20'



SURVEYOR'S CERTIFICATE

I, JERRY H. ISAACSON, DO HEREBY CERTIFY THAT I AM A REGISTERED LAND SURVEYOR, AND THAT I HOLD LICENSE NO. 4775, AS PRESCRIBED BY THE LAWS OF THE STATE OF UTAH, AND I FURTHER CERTIFY THAT I HAVE MADE A SURVEY OF THE DESCRIBED PROPERTY AND THAT THIS PLAT IS A TRUE AND CORRECT REPRESENTATION OF THE DESCRIBED PROPERTY.

10-5-90 DATE
Jerry H. Isaacson
JERRY H. ISAACSON

DESCRIPTION

BEGINNING AT A POINT WHICH IS N 89° 10' 15" W 1318.56 FEET ALONG THE SECTION LINE AND S 1° 06' 15" W 33.00 FEET FROM THE NORTH QUARTER CORNER OF SECTION 33, TOWNSHIP 6 NORTH, RANGE 2 WEST, SALT LAKE BASE 8 MERIDIAN, AND RUNNING THENCE S 89° 10' 15" E 175.00 FEET, THENCE S 1° 06' 15" W 117.00 FEET, THENCE N 89° 10' 15" W 175.00 FEET, THENCE N 1° 06' 15" E 117.00 FEET TO THE POINT OF BEGINNING.
CONTAINS 0.470 ACRES

NARRATIVE

THE PURPOSE OF THIS SURVEY WAS THAT THE OWNER, WILLIAM ANDERSON, WANTED TO LOCATE HIS PROPERTY CORNERS.

LEGEND

- = SET 5/8"x2" REBAR WITH CAP (ISAACSON ENGINEERING)
- ◊ = FOUND WEBER COUNTY BRASS MONUMENT

RECEIVED
JAN 03 1990
1991
Weber County Surveyor

PROPERTY SURVEY
PREPARED FOR
WILLIAM ANDERSON
TAYLOR, UTAH

LOT 13
VALLEY GREEN ESTATES
SUBDIVISION

ISAACSON ENGINEERING & SURVEYING KAYSVILLE, UTAH (801) 546-4704	
DRAWN BY CALCULATED BY CHECKED BY	DATE MARCH 1990 SCALE 1" = 20'
JOB NO. _____	
SHEET 1 OF 1	
REV.	

NO. DATE BY DESCRIPTION

000430