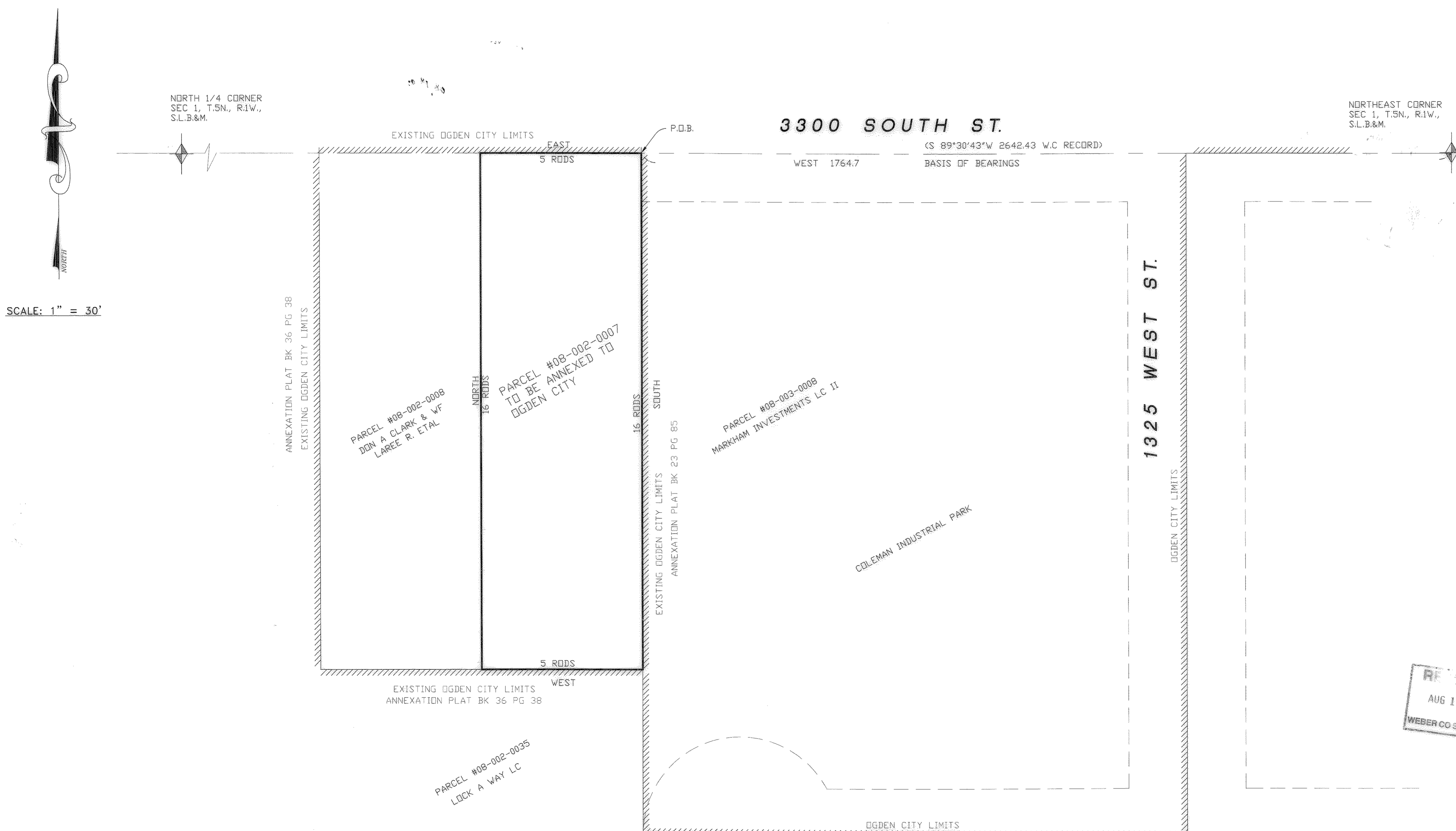


# ANNEXATION TO OGDEN CITY 2009-1

## SHOWING CHANGE IN CORPORATE LIMITS

### LOCATED IN WEBER COUNTY

#### THE N.E. 1/4 OF SECTION 1, T. 5 N., R. 2 W., S.L.B. & M.

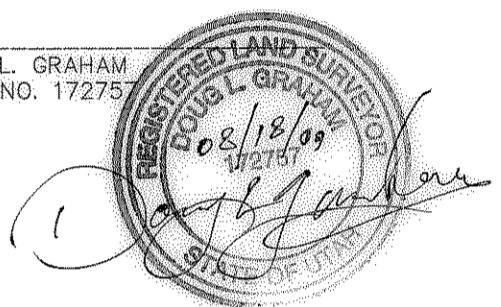


**SURVEYOR'S CERTIFICATION**

I, DOUG L. GRAHAM DO HEREBY CERTIFY THAT I AM A REGISTERED PROFESSIONAL LAND SURVEYOR, AS PRESCRIBED BY THE STATE OF UTAH AND LICENSED UNDER TITLE 68, CHAPTER 22, PROFESSIONAL ENGINEERS AND PROFESSIONAL SURVEYORS LICENSING ACT, HOLDING CERTIFICATE NO. 172757 AND THAT THIS PLAT OF CHANGE IN THE CORPORATE LIMITS OF OGDEN CITY, WEBER COUNTY, UTAH HAS BEEN DRAWN TO THE DESIGNATED SCALE AND IS A CORRECT REPRESENTATION OF DATA FROM THE RECORDS OF THE WEBER COUNTY RECORDERS OFFICE AND THE OGDEN CITY ENGINEERS OFFICE.

SIGNED THIS 19 DAY OF AUGUST 2009

DOUG L. GRAHAM  
R.L.S. NO. 172757



**OGDEN CITY ACCEPTANCE**

STATE OF UTAH  
COUNTY OF WEBER

I, \_\_\_\_\_, CERTIFY THAT I AM THE DULY APPOINTED, QUALIFIED AND ACTING CITY RECORDER OF OGDEN CITY, A MUNICIPAL CORPORATION OF UTAH, AND THAT THE FOREGOING PLAT OF LANDS SOUGHT TO BE ANNEXED TO SAID CITY, WITH A PETITION OF THE MAJORITY OF THE PROPERTY OWNERS OF THE REAL PROPERTY EMBRACED THEREIN FOR SUCH ANNEXATION WERE FILED IN MY OFFICE ON THE \_\_\_\_\_ DAY OF \_\_\_\_\_ 20\_\_\_\_; THAT THE QUESTION OF SUCH ANNEXATION WAS DULY SUBMITTED TO AND VOTED ON BY THE COUNCIL OF OGDEN CITY AT ITS MEETING DULY CONVENED AND HELD ON THE \_\_\_\_\_ DAY OF \_\_\_\_\_ 20\_\_\_\_; THAT ON SUCH VOTE MORE THAN TWO THIRDS OF ALL MEMBERS OF SAID COUNCIL VOTED IN FAVOR OF SAID ANNEXATION; AND THAT THE FOREGOING PLAT IS THE PLAT REFERRED TO IN OGDEN CITY ORDINANCE NO. \_\_\_\_\_ DULY ORDAINED BY SAID COUNCIL ON \_\_\_\_\_ 20\_\_\_\_, DECLARING SUCH ANNEXATION.

WITNESS MY HAND AND OFFICIAL SEAL THIS \_\_\_\_\_ DAY OF \_\_\_\_\_ 20\_\_\_\_.

OGDEN CITY RECORDER \_\_\_\_\_ APPROVED \_\_\_\_\_ OGDEN CITY MAYOR

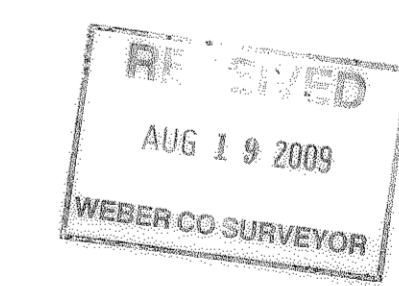
**RECORD BOUNDARY DESCRIPTION**

PART OF THE NORTHEAST QUARTER OF SECTION 1, TOWNSHIP 5 NORTH, RANGE 2 WEST, SALT LAKE BASE AND MERIDIAN, U.S. SURVEY, DESCRIBED AS FOLLOWS:  
BEGINNING AT POINT ON THE EXISTING CITY LIMITS BEING 1764.7 FEET WEST MORE OR LESS FROM THE NORTHEAST CORNER OF SAID QUARTER SECTION; RUNNING THENCE SOUTH 16 RODS MORE OR LESS ALONG SAID CITY LIMIT LINE AND THE WESTERLY LINE OF COLEMAN INDUSTRIAL PARK TO THE EXISTING CITY LIMITS; THENCE WEST 5 RODS MORE OR LESS ALONG SAID CITY LIMIT LINE, TO EASTERLY LINE OF THE DON A. CLARK PARCEL #08-002-0008; THENCE NORTH, ALONG SAID EASTERLY LINE 16 RODS MORE OR LESS TO THE EXISTING CITY LIMITS; THENCE EAST 5 RODS MORE OR LESS TO THE POINT OF BEGINNING.

CONTAINS .5 ACRES

**NARRATIVE**

THIS PLAT IS A REPRESENTATION OF RECORD DEED LINES FOR THE PURPOSE OF ANNEXATION ONLY. THE PLAT DOES NOT REPRESENT A GROUND SURVEY OF THE BOUNDARY DESCRIBED AND NO PROPERTY CORNER MARKERS WILL BE SET.



004342

**WEBER COUNTY SURVEYOR**  
THIS PLAT IS HEREBY APPROVED AS A FINAL LOCAL ENTITY PLAT AS REQUIRED BY UTAH CODE 17-23-20

WEBER COUNTY SURVEYOR \_\_\_\_\_  
DATE \_\_\_\_\_

**LANDMARK SURVEYING AND ENGINEERING, INC.**  
A COMPLETE LAND DEVELOPMENT SERVICE  
4646 S. 3500 W. #A-3, WEST HAVEN, UTAH 84401  
PHONE 801-731-4075

CLIENT: COREY ERDMANN	DRAWN BY: DLG
LOCATION: PART OF THE N.E. 1/4 OF SEC. 1, T.5N., R.2W., S.L.B.&M.	CHECKED BY:
SURVEYED:	DATE: 03-13-09
REVISIONS:	FILE: 3078.DWG
04-08-09 DLG	
05-13-09 DLG	
06-18-09 DLG	

**WEBER COUNTY RECORDER**  
ENTRY # \_\_\_\_\_ FEE \_\_\_\_\_  
FILED FOR RECORD & RECORDED  
THIS \_\_\_\_\_ DAY OF \_\_\_\_\_ 20\_\_\_\_  
AT \_\_\_\_\_ IN BOOK \_\_\_\_\_ OF \_\_\_\_\_  
PAGE \_\_\_\_\_  
WEBER COUNTY RECORDER \_\_\_\_\_  
BY \_\_\_\_\_ DEPUTY