

# ANNEXATION PLAT TO THE NORTH VIEW FIRE DISTRICT 2009-07

## A RECORD OF SURVEY SHOWING THE BOUNDARY OF NORTH VIEW FIRE DISTRICT WEBER COUNTY FINAL LOCAL ENTITY PLAT AUGUST, 2009



SCALE: 1" = 60'

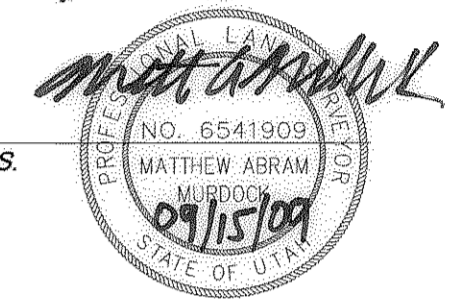
### LEGEND

|  |   |  |                                       |
|--|---|--|---------------------------------------|
|  | NEW NORTHVIEW FIRE DISTRICT BOUNDARY      |  | WEBER COUNTY FOUND SECTION CORNER     |
|  | EXISTING NORTHVIEW FIRE DISTRICT BOUNDARY |  | WEBER COUNTY NOT FOUND SECTION CORNER |
|  | QUARTER SECTION LINE                      |  | SUBDIVISION BOUNDARY                  |
|  | SECTION LINES                             |  |                                       |

### SURVEYORS CERTIFICATE

I, MATTHEW ABRAM MURDOCK, DO HEREBY CERTIFY THAT I AM A PROFESSIONAL LAND SURVEYOR LICENSED IN THE STATE OF UTAH, AND THAT I HOLD CERTIFICATE NO. 6541909 AS PRESCRIBED UNDER THE LAWS OF THE STATE OF UTAH. THIS ANNEXATION PLAT HAS BEEN MADE UNDER MY DIRECTION AND IN ACCORDANCE WITH INFORMATION OBTAINED FROM THE WEBER COUNTY RECORDER'S OFFICE.

SIGNED THIS 15<sup>th</sup> DAY OF September, 2009.



MATTHEW ABRAM MURDOCK, P.L.S.

### BOUNDARY DESCRIPTION

A PART OF THE NORTH HALF OF SECTION 4, TOWNSHIP 6 NORTH, RANGE 1 WEST, S.L.B. & M.

BEGINNING AT A POINT ON THE NORTHVIEW FIRE DISTRICT BOUNDARY LINE. SAID POINT IS ALSO THE NORTHEAST CORNER OF LOT 4 MOUNTAIN MEADOW SUBDIVISION; RUNNING THENCE ALONG SAID NORTHVIEW FIRE DISTRICT BOUNDARY LINE THE FOLLOWING 2 COURSES: (1) NORTH 00°15'00" EAST 397.65 FEET TO THE CENTER OF MUD CREEK SAID POINT ALSO LYING ON THE SOUTH LINE OF GREENFIELD SUBDIVISION, PHASE 1 (2) NORTH 85°51'59" EAST 172.90 FEET ALONG SAID CENTER OF MUD CREEK AND SOUTH LINE OF GREENFIELD SUBDIVISION PHASE 1 TO THE NORTH OGDEN CITY CORPORATE LINE; THENCE ALONG SAID CORPORATE LINE THE FOLLOWING THREE COURSES: (1) SOUTH 00°07'34" EAST 79.00 FEET; (2) NORTH 86°52'18" EAST 67.20 FEET TO A POINT 2.90 FEET EAST OF THE EAST LINE OF SAID NORTHWEST QUARTER; (3) SOUTH 00°15'00" WEST 355.82 FEET PARALLEL TO SAID EAST LINE AND ALONG SAID NORTHVIEW FIRE DISTRICT BOUNDARY LINE; THENCE NORTH 89°45'00" WEST 240.00 FEET LEAVING SAID BOUNDARY LINE TO SAID NORTHVIEW FIRE DISTRICT BOUNDARY LINE AND POINT OF BEGINNING.

CONTAINS 2.12 ACRES MORE OR LESS AND ALL OF TAX PARCEL 11-004-0007

### REFERENCES

WEBER COUNTY RECORDER'S OFFICE TAX MAPS, DESCRIPTIONS, RECORD DOCUMENTS, SUBDIVISIONS & CITY ANNEXATION PLATS.

WEBER COUNTY SURVEYOR SECTION CORNER TIE SHEETS & RECORD OF SURVEYS

### SURVEYOR'S NOTES

BEARINGS AND DISTANCES GIVEN ARE DERIVED FROM RECORD INFORMATION WHERE AVAILABLE.

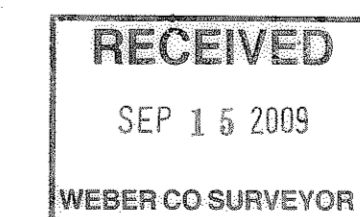
AT NO TIME WAS A SURVEY ON THE GROUND PERFORMED TO VERIFY THE ACCURACY OF THE BEARINGS AND DISTANCES NOR WERE ANY TIES TO EXISTING RECORD OF SURVEYS, PLATS, SECTION CORNERS, AND TIE SHEETS CONDUCTED. THIS RECORD OF SURVEY IS TO SERVE AS A BOUNDARY LINE TO ESTABLISH THE NORTHVIEW FIRE DISTRICT SUB-DISTRICT BOUNDARY FOR TAXATION PURPOSES ONLY.

BEARINGS AND DISTANCES WITHIN THIS DOCUMENT ARE PROVIDED FOR MAPPING PURPOSES ONLY. AT NO TIME NOW AND FOREVER DOES THIS PROPOSED BOUNDARY LINE DETERMINE THE LOCATION OF ANY PROPERTY LINE REPRESENTED ON THIS MAP.

### NORTH VIEW FIRE DISTRICT

THIS PLAT IS APPROVED AS TO FORM

APPROVED THIS \_\_\_\_\_ DAY OF \_\_\_\_\_, 2009.



CHAIRMAN

### WEBER COUNTY SURVEYOR

THIS PLAT IS HEREBY APPROVED AS A FINAL LOCAL ENTITY PLAT AS REQUIRED BY UTAH CODE 17-23-20.

APPROVED THIS \_\_\_\_\_ DAY OF \_\_\_\_\_, 2009.

WEBER COUNTY SURVEYOR

**SHEET 1 OF 3**

### WEBER COUNTY RECORDER

ENTRY NO. \_\_\_\_\_ FILED FOR RECORD AND RECORDED \_\_\_\_\_ AT \_\_\_\_\_ IN BOOK \_\_\_\_\_ OF OFFICIAL RECORDS PAGE \_\_\_\_\_ FOR \_\_\_\_\_

WEBER COUNTY RECORDER

BY: \_\_\_\_\_ DEPUTY

PREPARED BY:

**WASATCH CIVIL**  
Consulting Engineering  
5320 SOUTH 1950 WEST, SUITE 1  
ROY CITY, UTAH 84067 (801) 775-9191

M:\05-MISC\100-WATER\NORTH-VIEW-FIRE-ANNEX-REVISED.dwg 7/7/2009 7:47:21 AM MDT

# ANNEXATION PLAT TO THE NORTH VIEW FIRE DISTRICT 2009-07

## A RECORD OF SURVEY SHOWING THE BOUNDARY OF NORTH VIEW FIRE DISTRICT WEBER COUNTY FINAL LOCAL ENTITY PLAT AUGUST, 2009



SCALE: 1" = 60'

| LEGEND |   |  |                                       |
|--------|---|--|---------------------------------------|
|        | NEW NORTHVIEW FIRE DISTRICT BOUNDARY      |  | WEBER COUNTY FOUND SECTION CORNER     |
|        | EXISTING NORTHVIEW FIRE DISTRICT BOUNDARY |  | WEBER COUNTY NOT FOUND SECTION CORNER |
|        | QUARTER SECTION LINE                      |  | SUBDIVISION BOUNDARY                  |

CORP. OF THE PRES.  
BISHOP OF THE CHURCH  
OF JESUS CHRIST OF  
LATTER-DAY SAINTS  
170750029

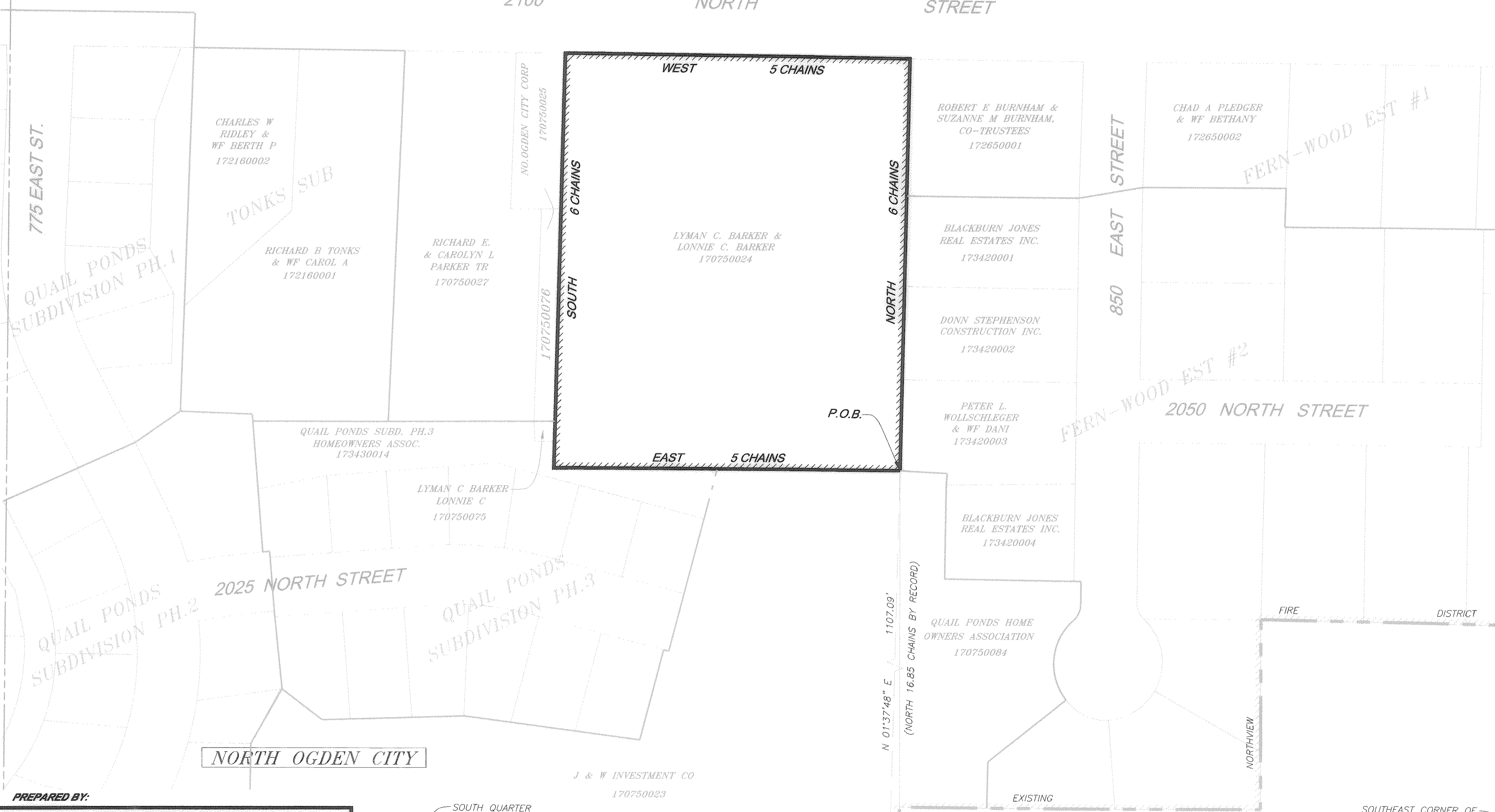
LYMAN C BARKER  
& WF LONNIE C  
170750053

FRANK WALLACE  
& WF TEENA D  
(ORLUFF OPHEIKENS ETAL  
-CLAIMS PT-)  
170750006

MARK JOHN  
JENKINS ETAL  
170750009

NORTH OGDEN CITY

2100 NORTH STREET



**BOUNDARY DESCRIPTION**

A PART OF THE WEST HALF OF THE SOUTHEAST QUARTER OF SECTION 33, TOWNSHIP 7 NORTH, RANGE 1 WEST, S.L.B. & M.

BEGINNING AT A POINT ON THE NORTH OGDEN CORPORATE BOUNDARY LINE, WHICH IS 16.85 CHAINS NORTH AND 13.15 CHAINS EAST FROM THE SOUTHWEST CORNER OF THE SOUTHEAST QUARTER OF SAID SECTION 33; RUNNING THENCE THE REMAINING COURSES AND DISTANCES ALONG SAID NORTH OGDEN CORPORATE BOUNDARY LINE: NORTH 6 CHAINS; THENCE WEST 5 CHAINS; THENCE SOUTH 6 CHAINS; THENCE EAST 5 CHAINS TO THE POINT OF BEGINNING.

CONTAINS 3 ACRES MORE OR LESS AND CONTAINS ALL OF TAX PARCEL 17-075-0024.

**REFERENCES**

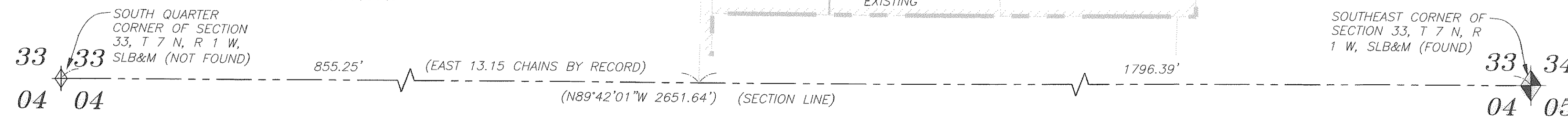
WEBER COUNTY RECORDER'S OFFICE TAX MAPS, DESCRIPTIONS, RECORD DOCUMENTS, SUBDIVISIONS & CITY ANNEXATION PLATS.  
WEBER COUNTY SURVEYOR SECTION CORNER TIE SHEETS & RECORD OF SURVEYS

**SURVEYOR'S NOTES**

BEARINGS AND DISTANCES GIVEN ARE DERIVED FROM RECORD INFORMATION WHERE AVAILABLE.  
AT NO TIME WAS A SURVEY ON THE GROUND PERFORMED TO VERIFY THE ACCURACY OF THE BEARINGS AND DISTANCES NOR WERE ANY TIES TO EXISTING RECORD OF SURVEYS, PLATS, SECTION CORNERS, AND TIE SHEETS CONDUCTED. THIS RECORD OF SURVEY IS TO SERVE AS A BOUNDARY LINE TO ESTABLISH THE NORTHVIEW FIRE DISTRICT SUB-DISTRICT BOUNDARY FOR TAXATION PURPOSES ONLY.  
BEARINGS AND DISTANCES WITHIN THIS DOCUMENT ARE PROVIDED FOR MAPPING PURPOSES ONLY. AT NO TIME NOW AND FOREVER DOES THIS PROPOSED BOUNDARY LINE DETERMINE THE LOCATION OF ANY PROPERTY LINE REPRESENTED ON THIS MAP.

**PREPARED BY:**

**WASATCH CIVIL**  
Consulting Engineering  
5320 SOUTH 1950 WEST, SUITE 1  
ROY CITY, UTAH 84067 (801) 775-9191



**RECEIVED**  
 SEP 15 2009  
 WEBER CO SURVEYOR

**SHEET 2 OF 3**

**WEBER COUNTY RECORDER**

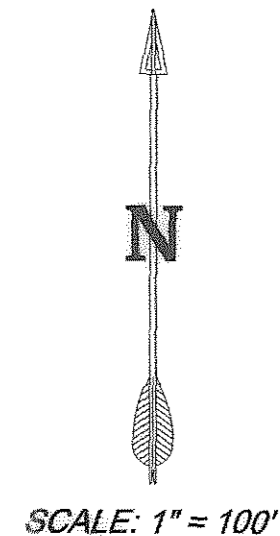
ENTRY NO. \_\_\_\_\_ FEE PAID \_\_\_\_\_  
 FILED FOR RECORD AND RECORDED \_\_\_\_\_ AT \_\_\_\_\_  
 IN BOOK \_\_\_\_\_ OF OFFICIAL RECORDS, PAGE \_\_\_\_\_ FOR \_\_\_\_\_

WEBER COUNTY RECORDER  
 BY: \_\_\_\_\_ DEPUTY

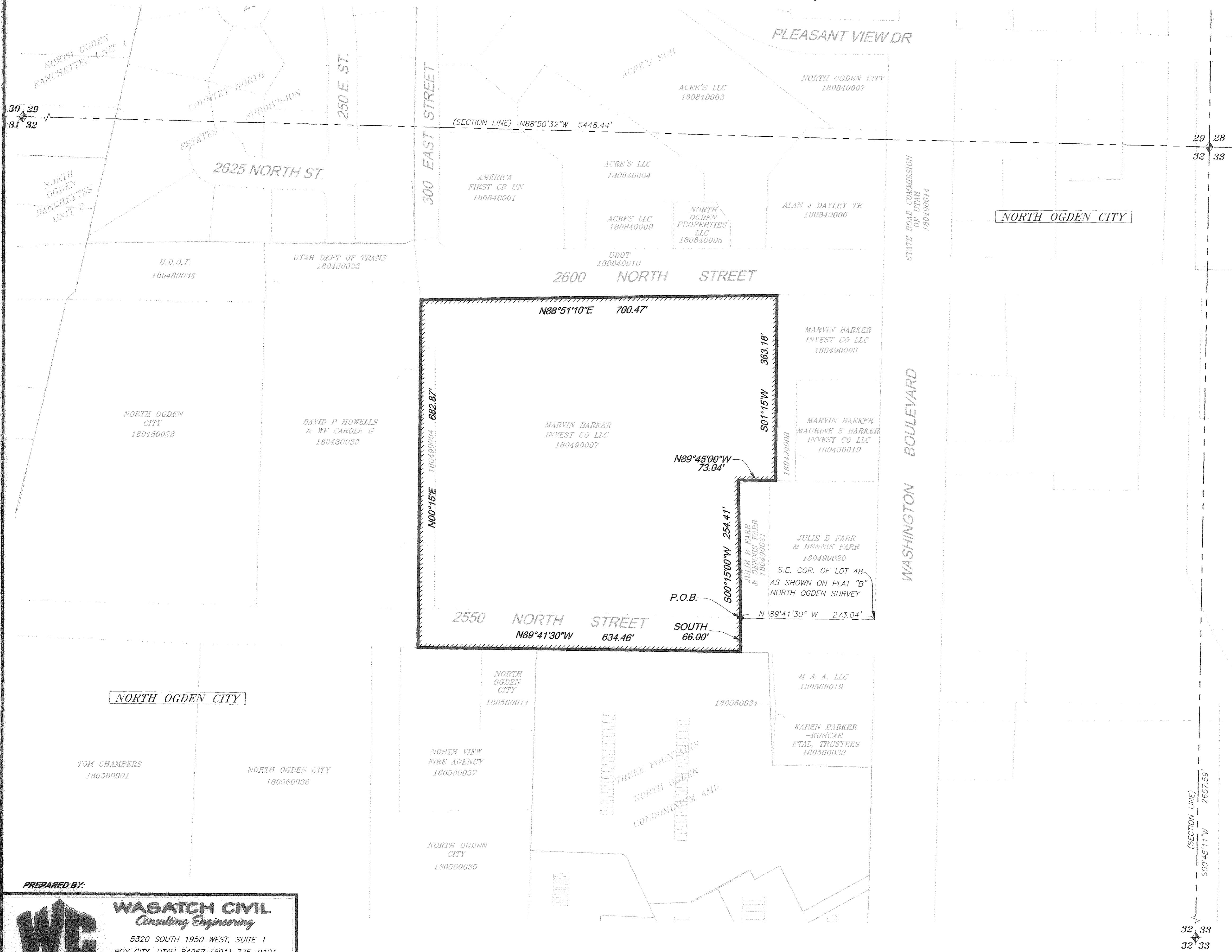
W:\05-MISC\100-WATER\NORTH-VIEW-FIRE-DISTRICT\DWG\BASE-ANNEX-REVISED.dwg 7/7/2009 7:47:21 AM MDT

# ANNEXATION PLAT TO THE NORTH VIEW FIRE DISTRICT 2009-07

## A RECORD OF SURVEY SHOWING THE BOUNDARY OF NORTH VIEW FIRE DISTRICT WEBER COUNTY FINAL LOCAL ENTITY PLAT AUGUST, 2009



| LEGEND |   |
|--------|---|
|        | NEW NORTHVIEW FIRE DISTRICT BOUNDARY      |
|        | EXISTING NORTHVIEW FIRE DISTRICT BOUNDARY |
|        | QUARTER SECTION LINE                      |
|        | SECTION LINES                             |
|        | WEBER COUNTY FOUND SECTION CORNER         |
|        | WEBER COUNTY NOT FOUND SECTION CORNER     |
|        | SUBDIVISION BOUNDARY                      |



**BOUNDARY DESCRIPTION**

A PART OF THE NORTHEAST QUARTER OF SECTION 32, TOWNSHIP 7 NORTH, RANGE 1 WEST, S.L.B. & M.

BEGINNING AT A POINT ON THE NORTH OGDEN CORPORATE BOUNDARY LINE, WHICH IS ALSO ON THE NORTH RIGHT-OF-WAY LINE OF 2550 NORTH STREET, WHICH POINT IS NORTH 89°41'30" WEST 273.04 FEET FROM THE SOUTHEAST CORNER OF LOT 48 AS SHOWN ON PLAT "B" NORTH OGDEN SURVEY; RUNNING THENCE THE REMAINING COURSES AND DISTANCES ALONG SAID NORTH OGDEN CORPORATE BOUNDARY LINE; SOUTH 66 FEET TO THE SOUTH RIGHT-OF-WAY LINE OF SAID 2550 NORTH STREET; THENCE NORTH 89°41'30" WEST 634.46 FEET ALONG SAID SOUTH RIGHT-OF-WAY LINE; THENCE NORTH 00°15' EAST 682.87 FEET TO THE SOUTH RIGHT-OF-WAY LINE OF 2600 NORTH STREET; THENCE NORTH 88°51'10" EAST 700.47 FEET ALONG SAID SOUTH RIGHT-OF-WAY LINE; THENCE SOUTH 00°15' WEST 363.18 FEET; THENCE NORTH 89°45'00" WEST 73.04 FEET; THENCE SOUTH 00°15'00" WEST 254.41 FEET TO THE POINT OF BEGINNING.

CONTAINS 10 ACRES MORE OR LESS AND CONTAINS ALL OF TAX PARCELS: 18-049-0007 AND 18-049-0004 AND THAT PORTION WITHING 2550 NORTH STREET.

**REFERENCES**

WEBER COUNTY RECORDER'S OFFICE TAX MAPS, DESCRIPTIONS, RECORD DOCUMENTS, SUBDIVISIONS & CITY ANNEXATION PLATS.

WEBER COUNTY SURVEYOR SECTION CORNER TIE SHEETS & RECORD OF SURVEYS

**SURVEYOR'S NOTES**

BEARINGS AND DISTANCES GIVEN ARE DERIVED FROM RECORD INFORMATION WHERE AVAILABLE.

AT NO TIME WAS A SURVEY ON THE GROUND PERFORMED TO VERIFY THE ACCURACY OF THE BEARINGS AND DISTANCES NOR WERE ANY TIES TO EXISTING RECORD OF SURVEYS, PLATS, SECTION CORNERS, AND TIE SHEETS CONDUCTED. THIS RECORD OF SURVEY IS TO SERVE AS A BOUNDARY LINE TO ESTABLISH THE NORTHVIEW FIRE DISTRICT SUB-DISTRICT BOUNDARY FOR TAXATION PURPOSES ONLY.

BEARINGS AND DISTANCES WITHIN THIS DOCUMENT ARE PROVIDED FOR MAPPING PURPOSES ONLY. AT NO TIME NOW AND FOREVER DOES THIS PROPOSED BOUNDARY LINE DETERMINE THE LOCATION OF ANY PROPERTY LINE REPRESENTED ON THIS MAP.

**RECEIVED**  
 SEP 15 2009  
 WEBER CO SURVEYOR

**SHEET 3 OF 3**

**WEBER COUNTY RECORDER**

ENTRY NO. \_\_\_\_\_ FEE PAID \_\_\_\_\_  
 FILED FOR RECORD AND RECORDED \_\_\_\_\_ AT \_\_\_\_\_  
 IN BOOK \_\_\_\_\_  
 OF OFFICIAL RECORDS, PAGE \_\_\_\_\_  
 FOR \_\_\_\_\_

WEBER COUNTY RECORDER

BY: \_\_\_\_\_ DEPUTY

**PREPARED BY:**

WC

**WASATCH CIVIL**  
*Consulting Engineering*

5320 SOUTH 1950 WEST, SUITE 1  
 ROY CITY, UTAH 84067 (801) 775-9191

PL 05-MISC 1 00-WATER-NORTH-VIEW-FIRE-DISTRICT(DMG)BASE-ANNEX-REVISED.dwg 7/7/2009 7:47:21 AM MDT