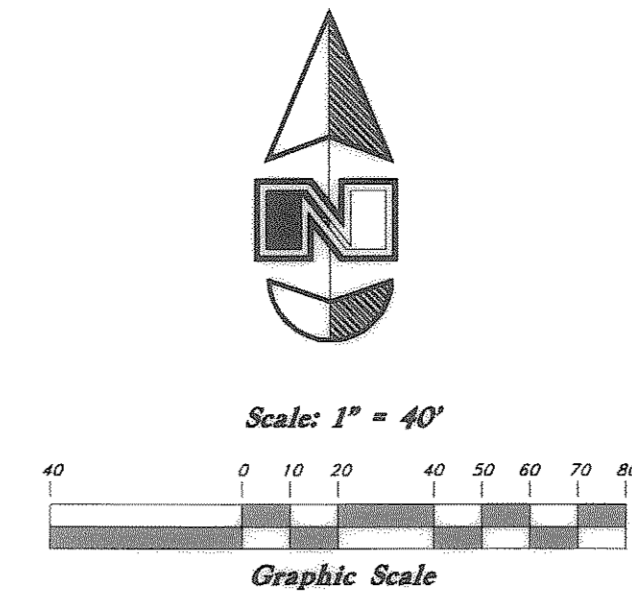


North 1/4 Corner of Section 32, T6N, R2W, SLB&M, U.S. Survey (Found Brass Cap Monument)



NARRATIVE

This Survey was requested by Mr. Craig Hansen in behalf of his father for the purpose of Establishing the Boundaries of this property.
 Brass Cap Monuments were Found at the Southwest corner, the South 1/4 corner and the North 1/4 corner of Section 32, T6N, R2W, SLB&M, U.S. Survey. A line bearing North 89°12'45" E between the South 1/4 corner and the Southwest corner was used as the basis of bearings.
 The adjoining properties are tied to the South 1/4 corner, the subject property is tied to the Southwest corner, the ties to were written as if the section was not subject to any overages or shortages. The properties all have contiguous calls along common lines. The parcels were fit together and then positioned using the South 1/4 corner and the Rancho Del Lago Subdivisions.
 The parcels were rotated 0°34'19" counter clockwise around the South 1/4 corner to match the section line, and translated 11.29' North along the Section line to match the Rancho Del Lago subdivisions.
 The Rancho Del Lago Subdivisions were rotated 0°00'01" counter clockwise to match the section line.
 Property corners were monumented as depicted on this drawing.

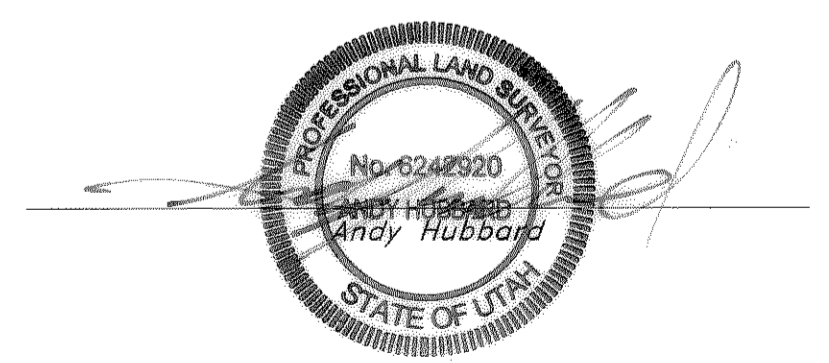
BOUNDARY DESCRIPTION

Part of the Southwest Quarter of Section 32, Township 6 North, Range 2 West, Salt Lake Meridian, U.S. Survey: beginning 20 chains North 33 chains East, And 20 feet North from the Southwest Corner of said Southwest Quarter Section; thence East 422 feet; thence North 140 feet; thence West 422 feet; thence South 140 feet to beginning.

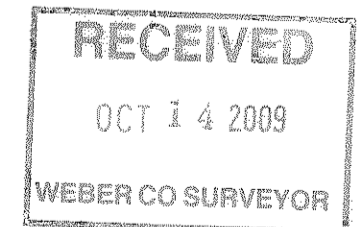
SURVEYOR'S CERTIFICATE

I, Andy Hubbard, do hereby certify that I am a Registered Professional Land Surveyor, and that I hold Certificate No. 4778, in accordance with Title 58, Chapter 22, of the Professional Engineers and Surveyors Licensing Act, and I have made a survey of the above described property according to Section 17-23-17 and that the above plot correctly shows the true dimensions of the property surveyed.

Date 9-10-09



004369



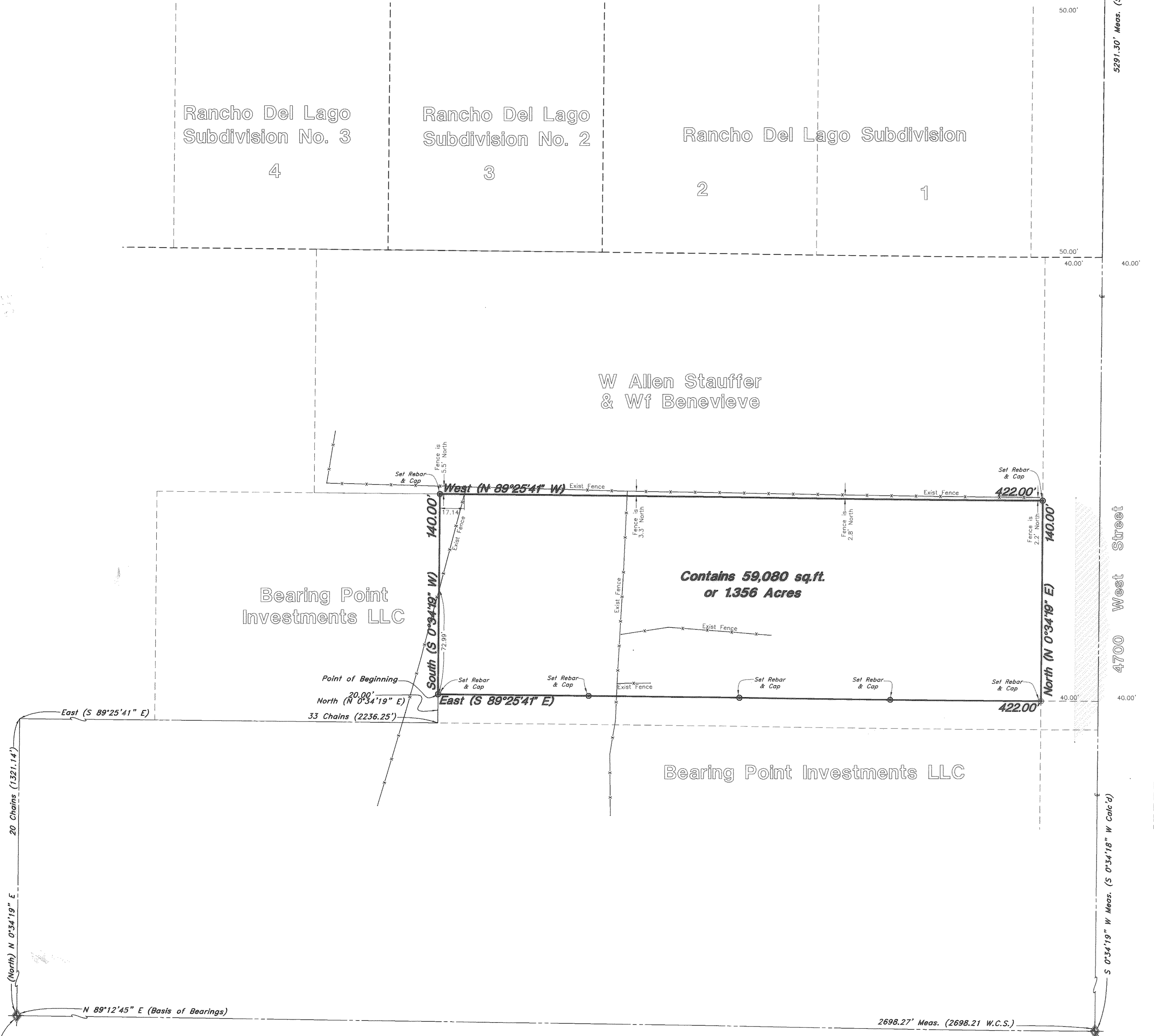
Rancho Del Lago Subdivision No. 3
 4
 Rancho Del Lago Subdivision No. 2
 3
 Rancho Del Lago Subdivision
 2
 1

W Allen Stauffer & Wf Benevieve

Bearing Point Investments LLC

Contains 59,080 sq.ft. or 1.356 Acres

Bearing Point Investments LLC



Southwest Corner of Section 32, T6N, R2W, SLB&M, U.S. Survey (Found Brass Cap Monument)

South 1/4 Corner of Section 32, T6N, R2W, SLB&M, U.S. Survey (Found Brass Cap Monument)

Property Survey		Hansen - Taylor Property A part of the Southwest 1/4 of Section 32, T6N, R2W, SLB&M, U.S. Survey Taylor, Weber County, Utah	
<p>GREAT BASIN ENGINEERING NORTH CONSULTING ENGINEERS AND SURVEYORS 5746 South 1475 East - Suite 200 Ogden, Utah 84403 P.O. Box 130048, Ogden, Utah 84415 Ogden (801)394-4515 Salt Lake City (801)551-0222 Fax (801)392-7544</p>	SCALE: 1" = 40'	DATE: 1 Sep, 2009	DRWG. NO.
	DRAWN: AH	REVISIONS:	09N723
	09N723		