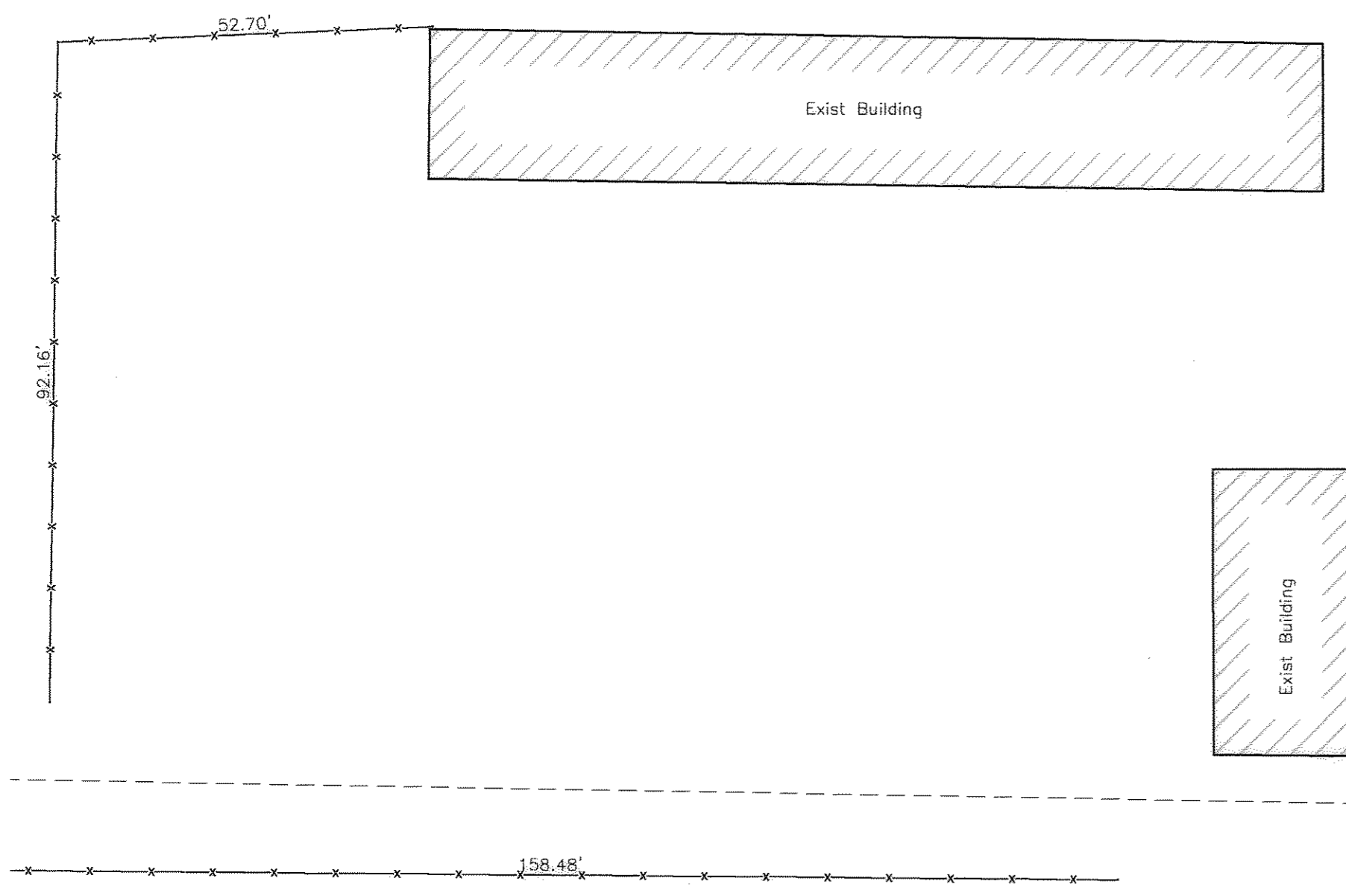
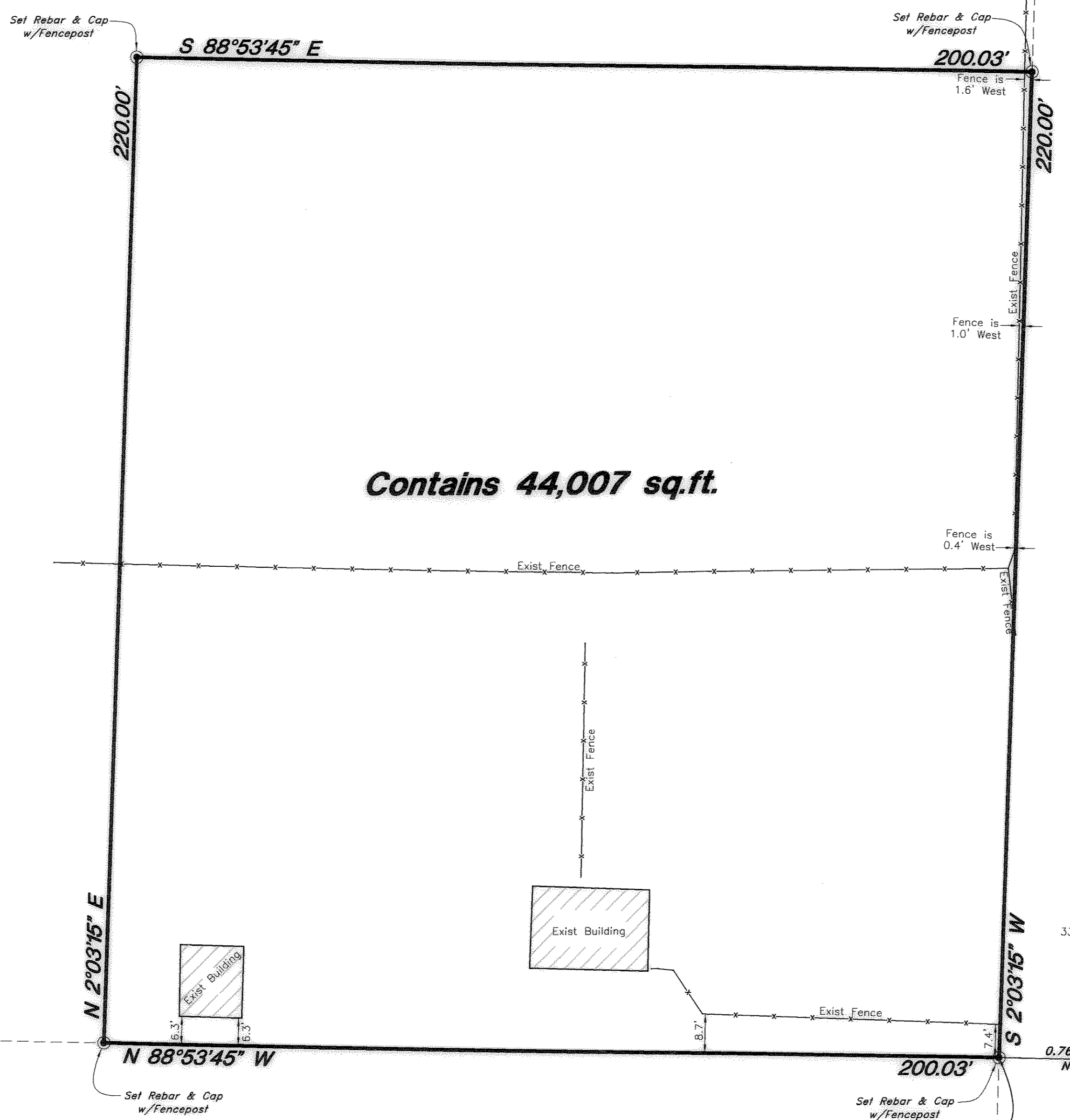


- LEGEND**
- ▲ Set Nail & Washer
  - Set Rebar & Cap w/ Fencepost
  - Set Hub & Tack
  - ⊙ Monument to be set
  - (Rad.) Radial Line
  - (N/R) Non-Radial Line



Northeast Corner of Section 19, T6N, R2W, SLB&M, U.S. Survey (Found Brass Cap Monument)

**NARRATIVE**

This property survey was requested by Mr. John Heslop in order to establish the boundaries of this parcel.  
 Brass Cap Monuments were found at the Northeast corner, the East 1/4 corner, the Southwest corner and the South 1/4 corner of Section 19, T6N, R2W, SLB&M, U.S. Survey.  
 A line bearing North 1°30'15" East between the East 1/4 corner and the Northeast corner was used as the basis of bearings.  
 Rebars with no caps were found at the Southeast and Southwest corners of the property.  
 Property corners were monumented as depicted on this drawing.

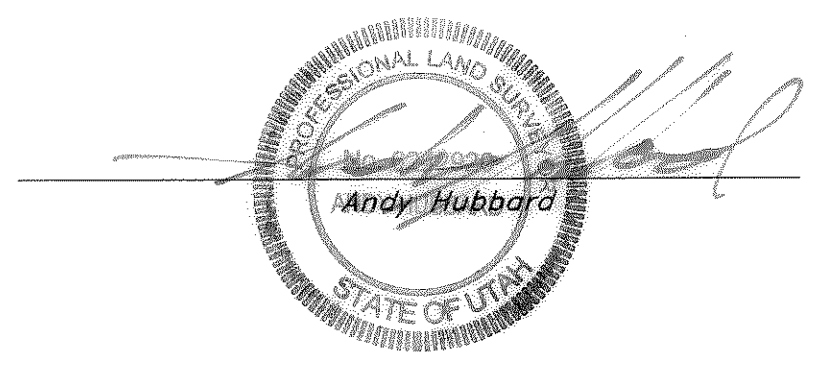
**BOUNDARY DESCRIPTION**

A part of the Southeast Quarter of the Northeast Quarter of Section 19, Township 6 North, Range 2 West, Salt Lake Base and Meridian, U.S. Survey; Beginning at a point 2.50 chains (165.00 feet) North along the Section Line and 0.76 chains (50.16 feet) South 89°36' West from the Southeast corner of the Northeast Quarter of Section 19, said point is on the West line of 5100 West Street, running thence North 88°53'45" West 200.03 feet; thence North 02°03'15" East 220.00 feet; thence South 88°53'45" East 200.03 feet to the West right of way line of 5100 West Street; thence South 02°03'15" West 220.00 feet along said West right of way line to the point of beginning. Contains 44,007 Square Feet

**SURVEYOR'S CERTIFICATE**

I, Andy Hubbard, do hereby certify that I am a Registered Professional Land Surveyor, and that I hold Certificate No. 6242920, in accordance with Title 58, Chapter 22, of the Professional Engineers and Surveyors Licensing Act, and I have made a survey of the above described property according to Section 17-23-17 and that the above plat correctly shows the true dimensions of the property surveyed.

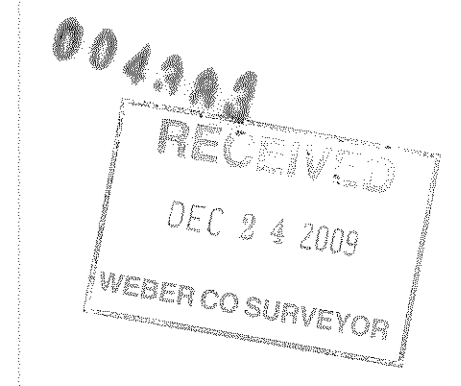
Date 11-30-09



East 1/4 Corner of Section 19, T6N, R2W, SLB&M, U.S. Survey (Found Brass Cap Monument)

Southeast Corner of Section 19, T6N, R2W, SLB&M, U.S. Survey (Found Brass Cap Monument)

South 1/4 Corner of Section 19, T6N, R2W, SLB&M, U.S. Survey (Found Brass Cap Monument)



<b>Property Survey</b>		<b>Heslop Property</b>	
A part of the Southeast 1/4 of the Northeast 1/4 of Section 19, T6N, R2W, SLB&M, U.S. Survey Weber County, Utah		A part of the Southeast 1/4 of the Northeast 1/4 of Section 19, T6N, R2W, SLB&M, U.S. Survey Weber County, Utah	
<b>GREAT BASIN ENGINEERING NORTH</b> CONSULTING ENGINEERS AND SURVEYORS 5746 South 1475 East - Suite 200 Ogden, Utah 84403 P.O. Box 150048, Ogden, Utah 84415 Ogden (801)394-4212 Salt Lake City (801)321-0222 Fax (801)392-7544		SCALE: 1"=20'	DATE: 20 Nov, 2009
		DRAWN: DH	REVISIONS:
		09N744	09N744