

**NARRATIVE**

This survey was requested by Mr. Scott Wright for the purpose of establishing the boundaries of this lot.  
 Brass Cap Monuments were found at the West 1/4 Corner and the Center of Section 23, T5N, R1W, SLB&M, U.S. Survey.  
 A line bearing N 88°58'34" W between these two monuments was used as basis of bearings.  
 Property Corners were monumented as depicted on this drawing.

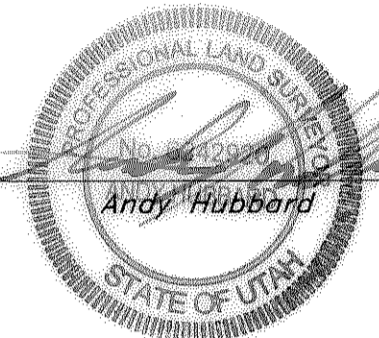
**BOUNDARY DESCRIPTION**

All of Lot 3 Stoddard Subdivision in Weber County, Utah according to the Official Plat thereof on file in the Weber County Recorder's Office.

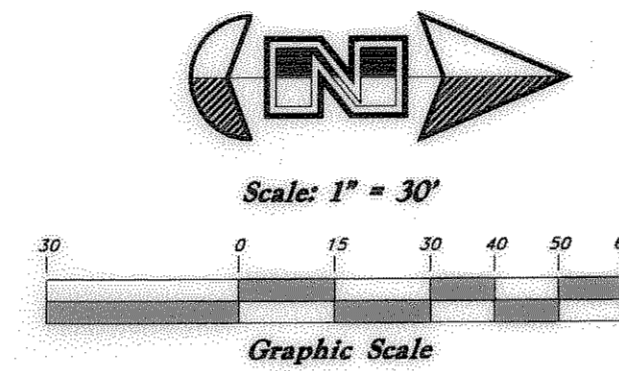
**SURVEYOR'S CERTIFICATE**

I, Andy Hubbard, do hereby certify that I am a Registered Professional Land Surveyor, and that I hold Certificate No. 6242920, in accordance with Title 58, Chapter 22, of the Professional Engineers and Surveyors Licensing Act, and I have made a survey of the above described property according to Section 17-23-17 and that the above plat correctly shows the true dimensions of the property surveyed.

Date 12-24-09



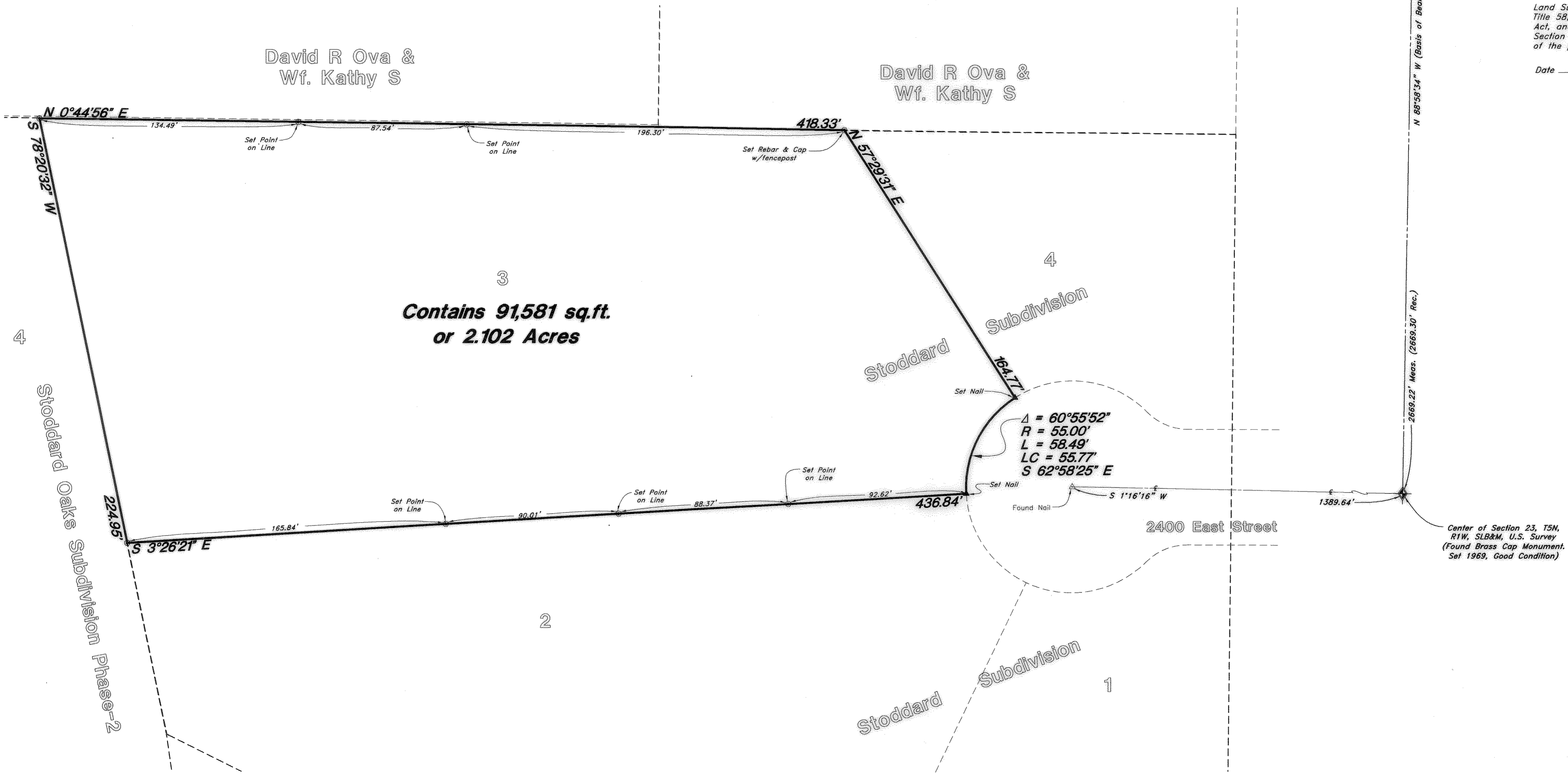
- LEGEND**
- ▲ Set Nail & Washer
  - △ Found Nail
  - ⊙ Set Rebar & Cap w/ Fencepost
  - ⊙ Set Hub & Tack
  - ⊙ Monument to be set
  - (Rad.) Radial Line
  - (N/R) Non-Radial Line



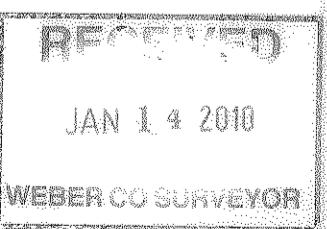
David R Ova &  
Wf. Kathy S

David R Ova &  
Wf. Kathy S

3  
Contains 91,581 sq.ft.  
or 2.102 Acres



004397



<b>Property Survey</b>		<b>Wright Utah Property</b> A part of the South 1/2 of Section 23, T5N, R1W, SLB&M, U.S. Survey Weber County, Utah	
<p><b>GREAT BASIN ENGINEERING NORTH</b> CONSULTING ENGINEERS AND SURVEYORS 5746 South 1475 East - Suite 200 Ogden, Utah 84403 P.O. Box 150048, Ogden, Utah 84415 Ogden (801)394-4515 Salt Lake City (801)521-0222 Fax (801)392-7544</p>	SCALE: 1"=30'	DATE: 15 Dec, 2009	DRWG. NO.
	DRAWN: DH	REVISIONS:	09N735
		09N735-PS	