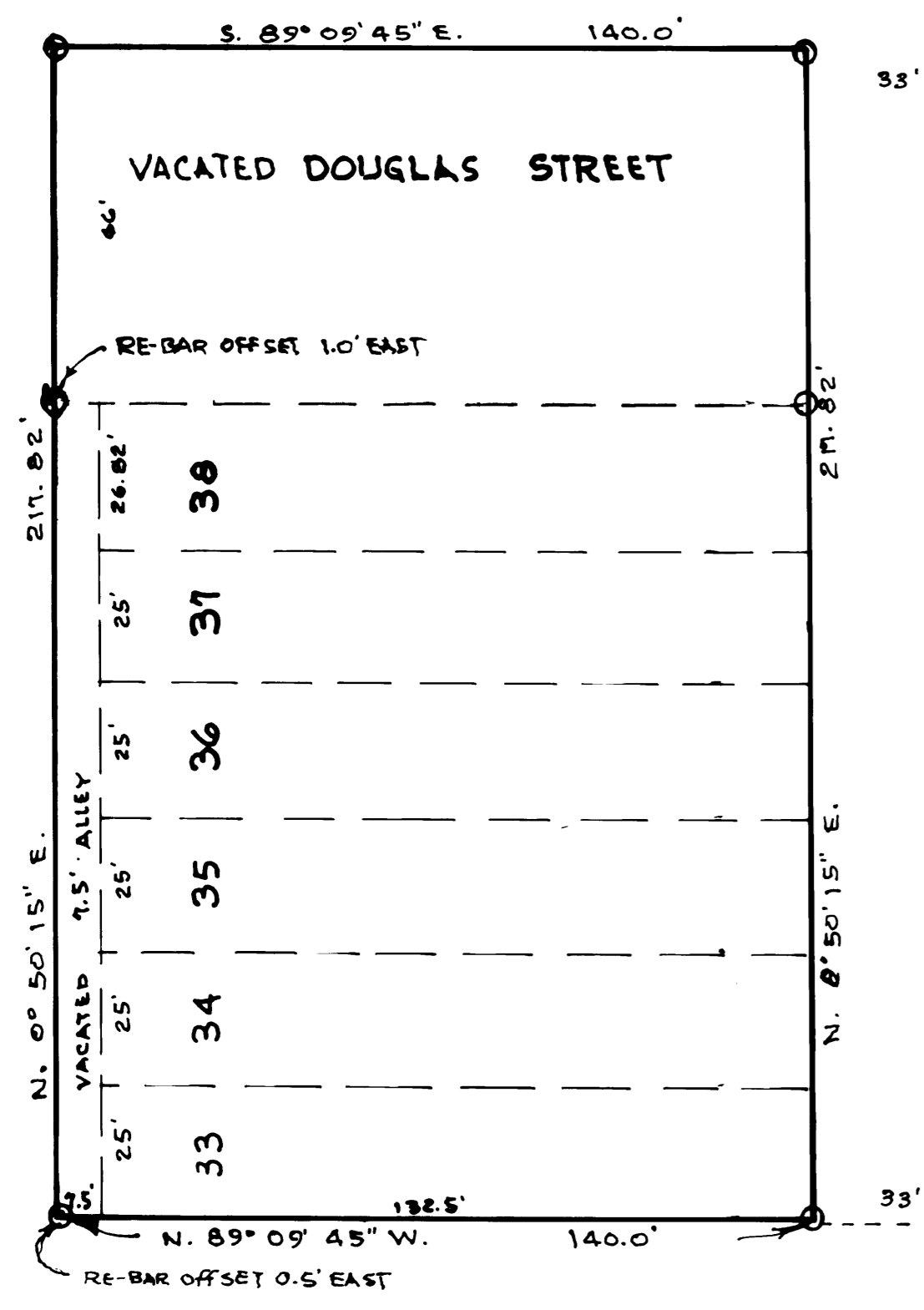
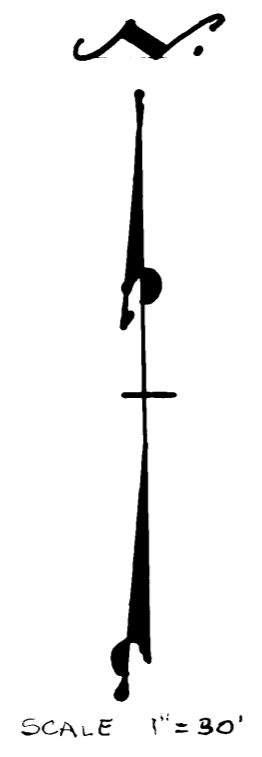


PLAN HOLD CORPORATION • IRVINE, CALIFORNIA
REORDER BY NUMBER 075AR
POSITION EDGE OF PRINT ON THIS LINE

PLAN HOLD CORPORATION • IRVINE, CALIFORNIA
REORDER BY NUMBER 075AR
POSITION EDGE OF PRINT ON THIS LINE

PLAN HOLD CORPORATION • IRVINE, CALIFORNIA
REORDER BY NUMBER 075AR
POSITION EDGE OF PRINT ON THIS LINE

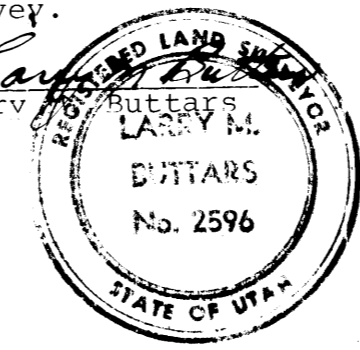
PLAN HOLD CORPORATION • IRVINE, CALIFORNIA
REORDER BY NUMBER 075AR
POSITION EDGE OF PRINT ON THIS LINE



LEGEND
SET 1/2" diam. 24" RE-BAR WITH PLASTIC CAP
STAMPED L.M. BUTTARS R.L.S. 2596

DESCRIPTION
Situate on the Northeast Quarter of Section 17, Township 6 North, Range 1 West, Salt Lake Meridian, U.S. Survey: All of lots 33, 34, 35, 36, 37, and 38, in Block 2, Orchard Grove Addition to Ogden City, Utah, together with a tract of land beginning at the Northeast corner of Lot 38, Block 2, Orchard Grove Addition to Ogden City, Utah, and running thence North 66 feet; thence West 140 feet; thence South 66 feet; thence East 140 feet to place of beginning, being that certain tract in the vacated Douglas Street; Together with the East one-half of the alley adjoining said Lots on the West.

SURVEYOR'S CERTIFICATE
I, Larry M. Buttars, a registered Land Surveyor as prescribed by the Laws of the State of Utah, and holding Licence No. 2596, do hereby certify that I have made a survey of the above described property and that the plat hereon is a true and correct representation of said survey.
Date: July 15, 1987 Signed: Larry M. Buttars



NARRATIVE
The purpose of this survey was to re-establish the corners for fencing. The hearing base used was Ogden City hearings given on Washington Blvd., 4th Street, and Grant Ave. Ogden City Monuments on 4th Street and Washington Blvd and 4th Street and Grant Avenue were used for this survey. Dementions from the Ogden City Engineering Plats.

RECEIVED
OCT 2 1987

BUTTARS SURVEYOR
1815 26th OGDEN, UT.
PH. 392-8291
CLIENT: EVA KUNZ
SURVEY LOCATION
BLK. 2 ORCHARD GR. ADDN
OGDEN CITY, UTAH
NE 1/4 17 T6N R1W
SURVEY DATE: 6-27-87