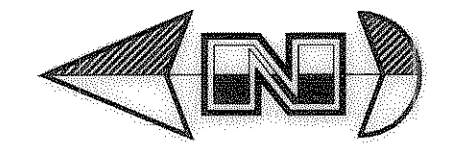
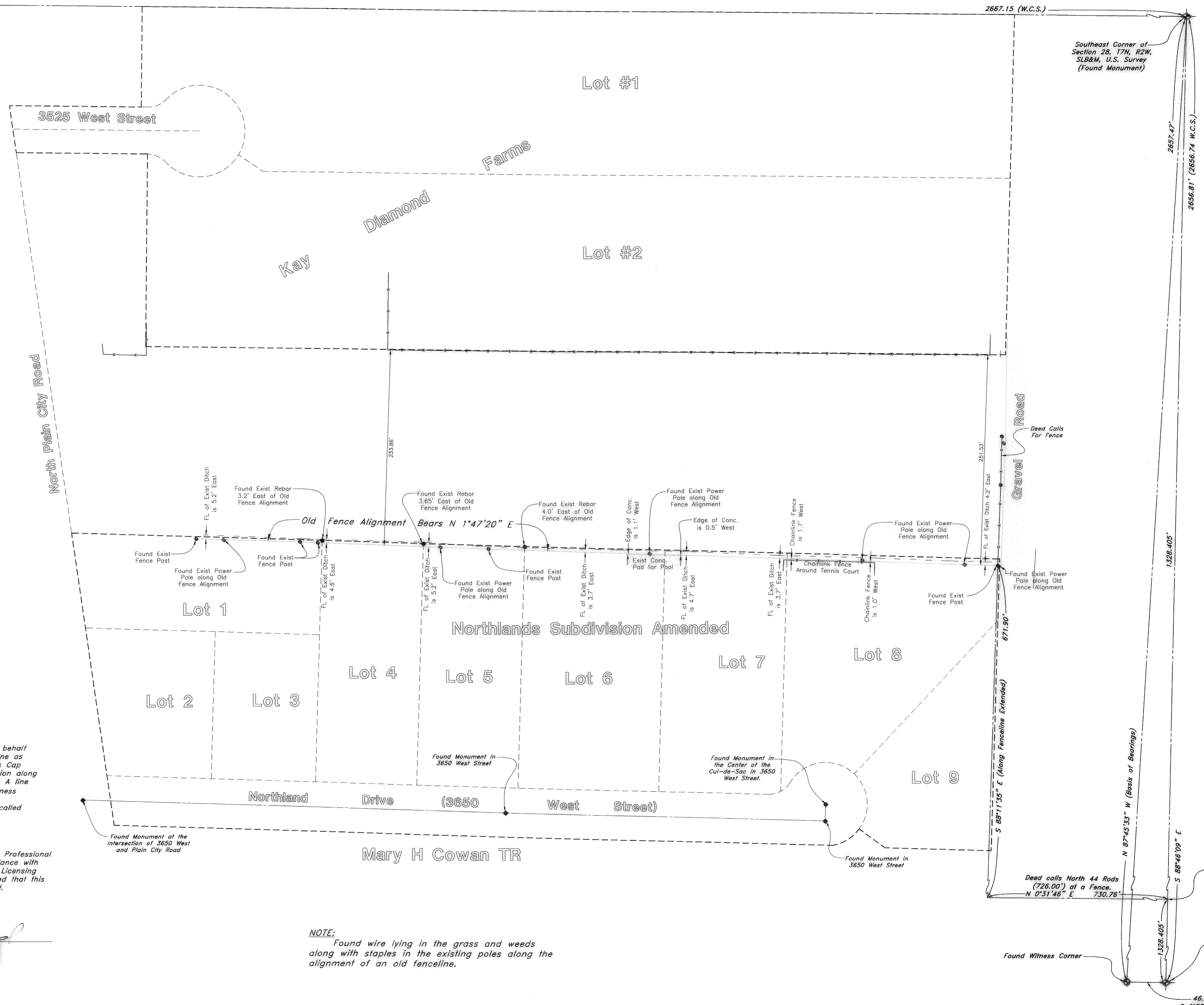
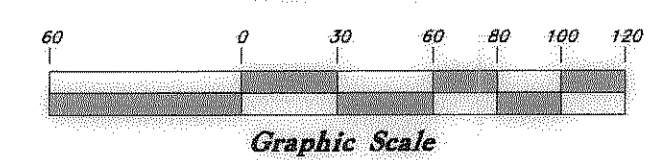


East 1/4 Corner of Section 28, T7N, R2W, SLB&M, U.S. Survey (Not in Place)

N 0°31'46" E



Scale: 1" = 60'



004429  
RECEIVED  
MAR 02 2010  
WEBER CO SURVEYOR

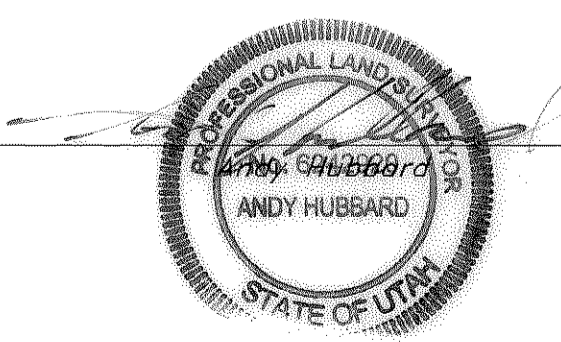
**NARRATIVE**

This fenceline survey was requested by Mr. Robert Barclay in behalf of Kay Diamond Farms for the purpose of locating an old fenceline as called for in the Kay Diamond Farms deed. A Weber County Brass Cap Monument was found at the Southeast Corner of the Quarter Section along with a Weber County Witness Corner for the South Quarter Corner. A line bearing N 87°45'33" W between the Southeast Corner and the Witness Corner was used as Basis of Bearings. No property corners were established other than the alignment of the existing fenceline as called for in the deed.

**SURVEYOR'S CERTIFICATE**

I, Andy Hubbard, do hereby certify that I am a Registered Professional Land Surveyor, and that I hold Certificate No. 6242920, in accordance with Title 58, Chapter 22, of the Professional Engineers and Surveyors Licensing Act, and I have made a survey of the an old fence alignment and that this plat correctly shows the true dimensions of the fenceline surveyed.

Date 3-16-2010



**NOTE:** Found wire lying in the grass and weeds along with staples in the existing poles along the alignment of an old fenceline.

<b>Fenceline Survey</b>		<b>Kay Diamond Farms</b>	
A part of the Southeast 1/4 of Section 28, T7N, R2W, SLB&M, U.S. Survey, Plain City, Weber County, Utah		A part of the Southeast 1/4 of Section 28, T7N, R2W, SLB&M, U.S. Survey, Plain City, Weber County, Utah	
<b>GREAT BASIN ENGINEERING NORTH</b> CONSULTING ENGINEERS AND SURVEYORS 5746 South 1475 East - Suite 200 Ogden, Utah 84403 P.O. Box 150040, Ogden, Utah 84415 <small>Ogden (801)394-4515 Salt Lake City (801)351-0222 Fax (801)392-7544</small>		SCALE: 1"=60' DRAWN: DH 09N301-PS	DATE: 9 Jun, 2009 REVISIONS: DRWG. NO. 09N301