

**BOUNDARY DESCRIPTION**

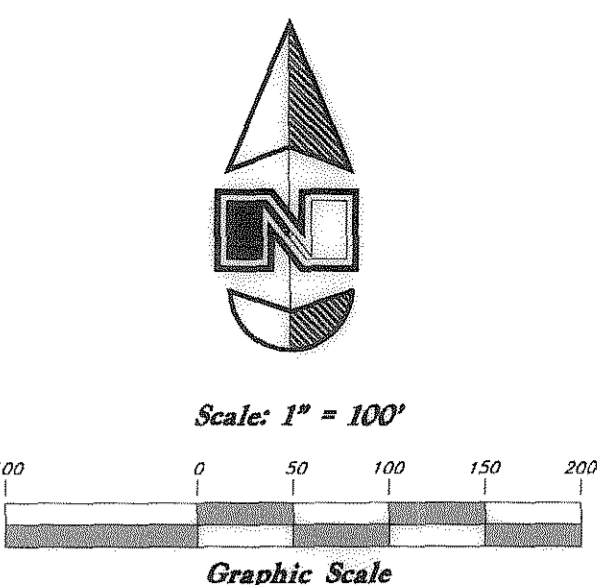
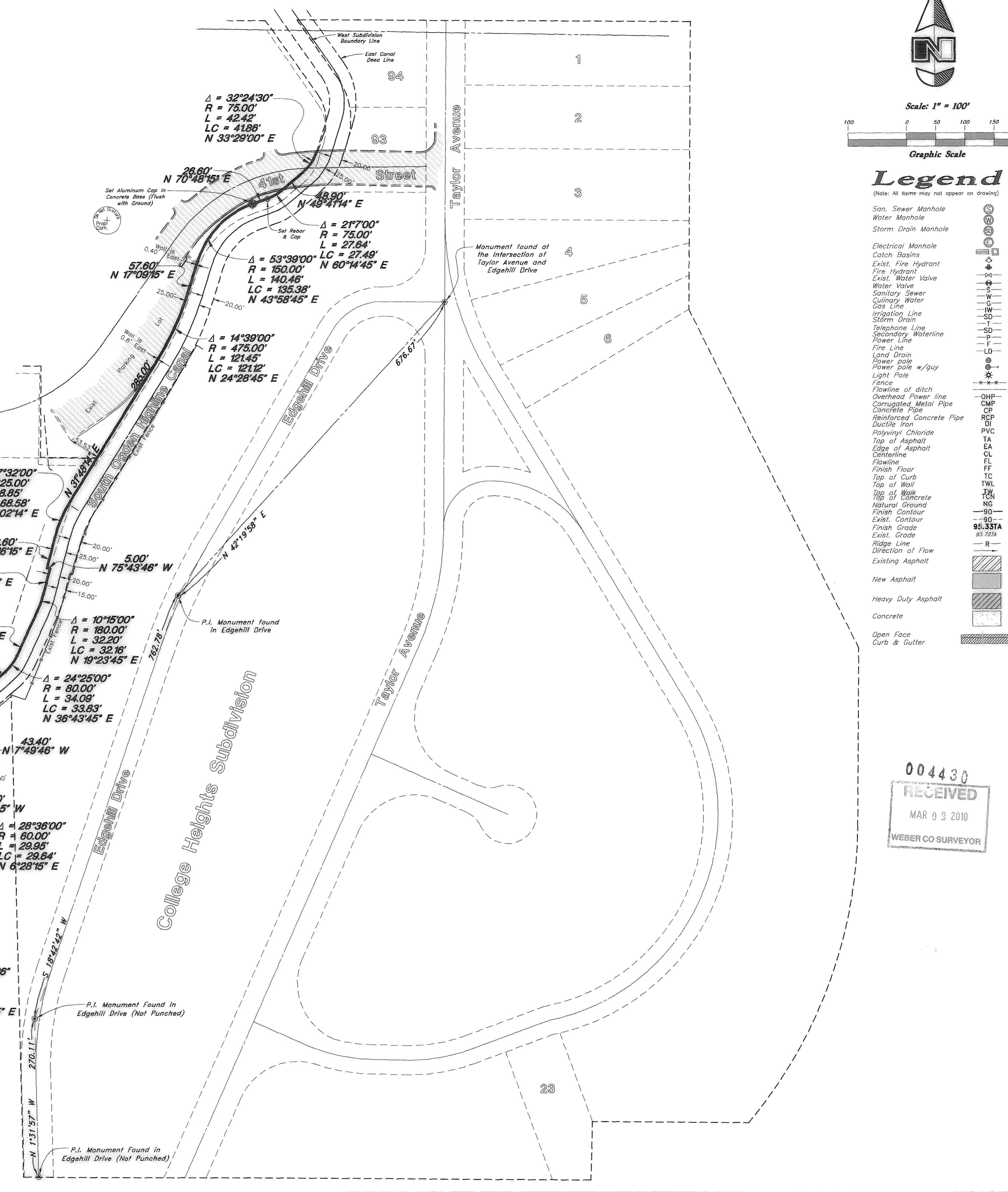
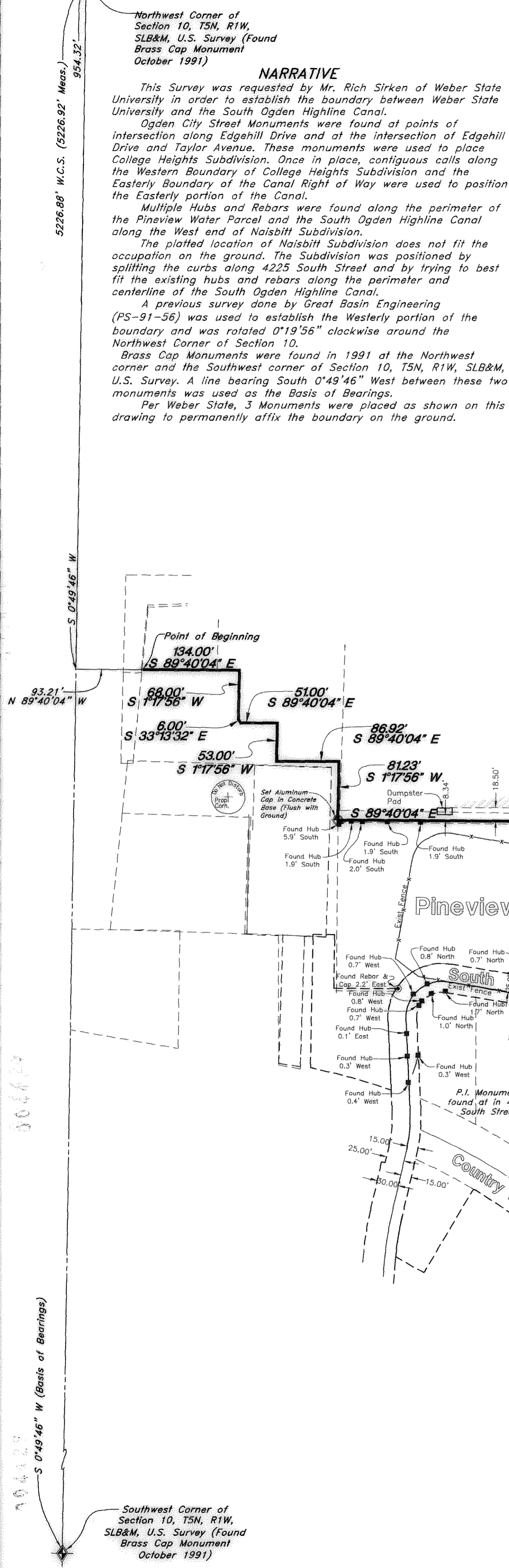
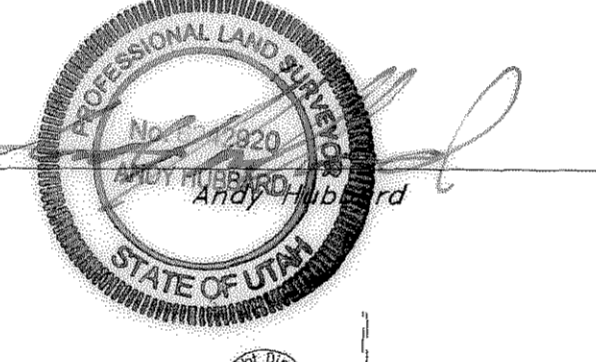
A part of the Northwest Quarter of Section 10, Township 5 North, Range 1 West, Salt Lake Base and Meridian, U.S. Survey;

Beginning at a point 954.32 feet South 0°49'46" West along the Section Line and 93.21 feet South 89°40'04" East from the Northwest Corner of said Section; and running thence South 89°40'04" East 134.00 feet; thence South 1°17'56" West 68.00 feet; thence South 33°13'32" East 6.00 feet; thence South 89°40'04" East 51.00 feet; thence South 1°17'56" West 53.00 feet; thence South 89°40'04" East 86.92 feet; thence South 1°17'56" West 81.23 feet; thence South 89°40'04" East 476.48 feet to the East Line Extended of the United States of America Parcel (Weber County Parcel # 06-106-0016); thence two (2) courses along said East Line Extended and said East Line as follows: South 0°28'16" West 168.39 feet and South 26°47'46" West 100.00 feet to the North Right Of Way Line of the South Ogden Highline Canal; thence thirty four (34) courses along said North Right Of Way Line as follows: Southeastly along the arc of a 70.00 foot radius curve to the left a distance of 60.48 feet (Long Chord bears South 87°57'14" East 58.61 feet); North 67°17'46" East 68.20 feet; Northeastly along the arc of a 130.00 foot radius curve to the right a distance of 56.06 feet (Long Chord bears North 79°39'01" East 55.63 feet); South 87°59'44" East 64.00 feet; Southeastly along the arc of a 130.00 foot radius curve to the right a distance of 80.30 feet (Long Chord bears North 70°17'59" East 79.03 feet); South 52°36'14" East 24.56 feet; South 86°16'38" East 3.54 feet; South 52°40'46" East 84.25 feet; North 37°19'14" East 10.00 feet; South 52°40'46" East 85.50 feet; Southeastly along the arc of a 140.00 foot radius curve to the right a distance of 48.91 feet (Long Chord bears South 42°40'16" East 48.66 feet); South 32°39'46" East 10.20 feet; Southeastly along the arc of a 60.00 foot radius curve to the left a distance of 33.96 feet (Long Chord bears South 48°52'30" East 33.50 feet); South 65°05'19" East 4.00 feet; Northeastly along the arc of a 10.00 foot radius curve to the left a distance of 16.43 feet (Long Chord bears North 67°50'30" East 14.64 feet); North 20°46'14" East 185.10 feet; Northeastly along the arc of a 60.00 foot radius curve to the left a distance of 29.95 feet (Long Chord bears North 6°28'15" East 29.64 feet); North 7°49'46" West 91.70 feet; North 82°10'14" East 20.00 feet; North 7°49'46" West 43.40 feet; Northeastly along the arc of a 70.00 foot radius curve to the right a distance of 69.35 feet (Long Chord bears North 20°33'14" East 66.55 feet); North 48°56'15" East 101.20 feet; Northeastly along the arc of a 80.00 foot radius curve to the right a distance of 34.09 feet (Long Chord bears North 36°43'44" East 33.84 feet); North 24°31'15" East 83.70 feet; Northeastly along the arc of a 180.00 foot radius curve to the left a distance of 32.20 feet (Long Chord bears North 19°23'44" East 32.16 feet); North 14°16'14" East 43.80 feet; North 75°43'46" West 5.00 feet; North 14°16'14" East 53.60 feet; Northeastly along the arc of a 225.00 foot radius curve to the right a distance of 68.85 feet (Long Chord bears North 23°02'14" East 68.58 feet); North 31°48'15" East 285.00 feet; Northeastly along the arc of a 475.00 foot radius curve to the left a distance of 121.45 feet (Long Chord bears North 24°28'45" East 121.12 feet); North 17°09'14" East 57.60 feet; Northeastly along the arc of a 150.00 foot radius curve to the right a distance of 140.46 feet (Long Chord bears North 43°58'45" East 135.38 feet); North 70°48'14" East 26.60 feet; Northeastly along the arc of a 75.00 foot radius curve to the left a distance of 27.64 feet (Long Chord bears North 60°14'45" East 27.49 feet); thence North 49°41'14" East 48.90 feet and Northeastly along the arc of a 75.00 foot radius curve to the left a distance of 42.42 feet (Long Chord bears North 33°29'00" East 41.86 feet).

**SURVEYOR'S CERTIFICATE**

I, Andy Hubbard, do hereby certify that I am a Registered Professional Land Surveyor, and that I hold Certificate No. 6242920, in accordance with Title 58, Chapter 22, of the Professional Engineers and Surveyors Licensing Act, and I have made a survey of the above described property according to Section 17-23-17 and that the above plat correctly shows the true dimensions of the property surveyed.

Date 3-15-2010



- Legend**
- (Note: All items may not appear on drawing)
- San. Sewer Manhole
  - Water Manhole
  - Storm Drain Manhole
  - Electrical Manhole
  - Catch Basins
  - Exist. Fire Hydrant
  - Fire Hydrant
  - Exist. Water Valve
  - Water Valve
  - Sanitary Sewer
  - Culinary Water
  - Gas Line
  - Irrigation Line
  - Storm Drain
  - Telephone Line
  - Secondary Waterline
  - Power Line
  - Fire Line
  - Land Drain
  - Power pole
  - Power pole w/guy
  - Light Pole
  - Fence
  - Flowline at ditch
  - Overhead Power line
  - Corrugated Metal Pipe
  - Concrete Pipe
  - Reinforced Concrete Pipe
  - Ductile Iron
  - Polyvinyl Chloride
  - Top of Asphalt
  - Edges of Asphalt
  - Centerline
  - Flowline
  - Finish Floor
  - Top of Curb
  - Top of Wall
  - Top of Walk
  - Top of Concrete
  - Natural Ground
  - Finish Contour
  - Exist. Contour
  - Finish Grade
  - Exist. Grade
  - Ridge Line
  - Direction of Flow
  - Existing Asphalt
  - New Asphalt
  - Heavy Duty Asphalt
  - Concrete
  - Open Face
  - Curb & Gutter

004430  
RECEIVED  
MAR 03 2010  
WEBER CO SURVEYOR

|   |  |  |                        |           |
|---|--|--|------------------------|-----------|
| <p><b>South Property Line Survey</b></p> <p>GREAT BASIN ENGINEERING NORTH<br/>CONSULTING ENGINEERS AND SURVEYORS<br/>5745 South 1475 East - Suite 200<br/>Ogden, Utah 84403<br/>P.O. Box 150048, Ogden, Utah 84415<br/>Ogden (801)384-4315 Salt Lake City (801)361-0222 Fax (801)382-7244</p> |  | SCALE: 1"=100'   | DATE: 12 May, 2009     | DRWG. NO. |
|   |  | DRAWN: DH  | REVISIONS: 9 Mar, 2010 | 09N500    |
|   |  | <p>Weber State University<br/>A part of the Northwest 1/4 of Section 10,<br/>T5N, R1W, SLB&amp;M, U.S. Survey<br/>Ogden City, Weber County, Utah</p> |                        |           |