

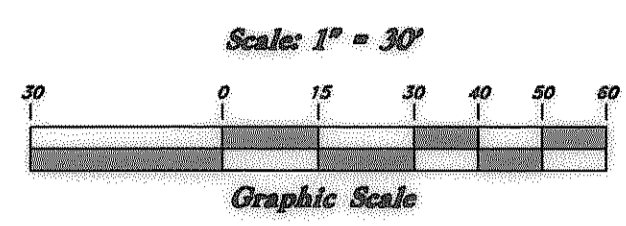
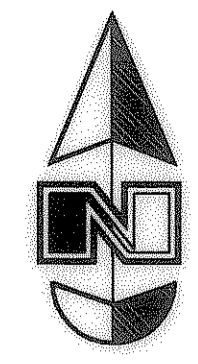
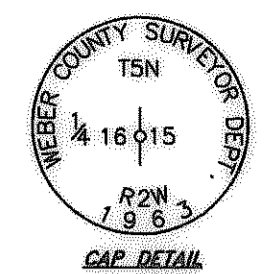
$\Delta = 16^{\circ}52'24''$
 $R = 445.00'$
 $L = 131.05'$
 $LC = 130.58'$
 $S 15^{\circ}23'22'' W$

30
 130,270 sq. ft.

$\Delta = 48^{\circ}43'07''$
 $R = 50.00'$
 $L = 42.52'$
 $LC = 41.25'$
 $N 74^{\circ}18'45'' W$

$\Delta = 33^{\circ}11'49''$
 $R = 30.00'$
 $L = 17.38'$
 $LC = 17.14'$
 $S 66^{\circ}33'05'' E$

East 1/4 corner of Section 16, T5N, R2W, SLB&M, US Survey (Found Brass Cap Monument)



- LEGEND**
- ▲ Set Nail & Washer
 - Set Rebar & Cap
 - ⊕ w/ Fencepost
 - ⊙ Set Hub & Tack
 - ⊛ Monument to be set
 - (Rad.) Radial Line
 - (N/R) Non-Radial Line

NARRATIVE

This Survey was requested by Mr. Brent Wheeler for the purpose of establishing the boundaries of this parcel. Brass Cap Monuments were found at the East 1/4 corner, the Southeast corner and the South 1/4 corner of Section 16, T5N, R2W, SLB&M. The Section Corner Locations were positioned using the information on the Tie Sheets from the Weber County Surveyors Office. A line bearing N 89°45'19" W between the Southeast 1/4 corner and the South 1/4 corner of said Section 16 was used as the Basis of Bearings. Property Corners were monumented as depicted on this plat.

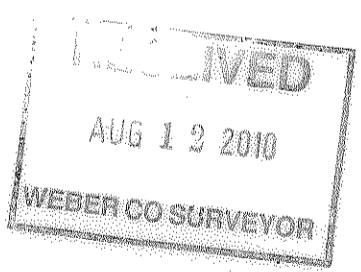
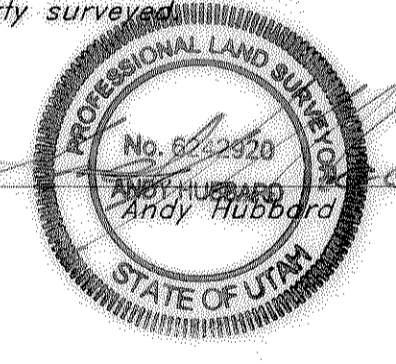
BOUNDARY DESCRIPTION

All of Lot 30, Westglen Subdivision No. 3, Roy City, Weber County, Utah, according to the official plat thereof, on file in the Weber County Records Office.

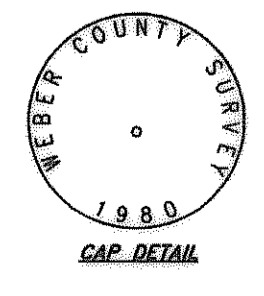
SURVEYOR'S CERTIFICATE

I, Andy Hubbard, do hereby certify that I am a Registered Professional Land Surveyor, and that I hold Certificate No. 6242920, in accordance with Title 58, Chapter 22, of the Professional Engineers and Surveyors Licensing Act, and I have made a survey of the above described property according to Section 17-23-17 and that the above plat correctly shows the true dimensions of the property surveyed.

Date 7-30-2010

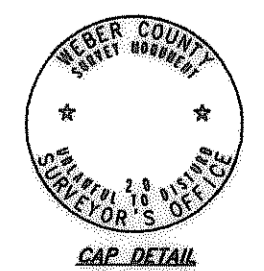


004467



S 89°45'19" E WCS Basis of Bearing

South 1/4 corner of Section 16, T5N, R2W, SLB&M, US Survey (Found Brass Cap Monument)



Southeast corner of Section 16, T5N, R2W, SLB&M, US Survey (Found Brass Cap Monument)

GREAT BASIN ENGINEERING
 5746 SOUTH 1475 EAST, OGDEN, UTAH 84403
 WWW.GREATBASINENGINEERING.COM

Property Survey
LDS Church - Midland/Roy
 3776 West 5375 South
 Roy City, Weber County, Utah
 A part of Section 16, T5N, R2W, SLB&M, U.S. Survey

23 Jun, 2010

SHEET NO.

C1

10N719-PS