

LEGEND

- ▲ Set Nail & Washer
- Set Rebar & Cap w/ Fencepost
- ⊙ Set Hub & Tack
- ⊕ Found Monument
- Calc'd Calculated Bearings and Distances
- Meas. Measured Bearings and Distances
- X- Existing Fence
- P.U.E. Public Utility Easement

A 5/8" rebar 24" long with plastic cap (see detail below) was set as shown on this drawing.

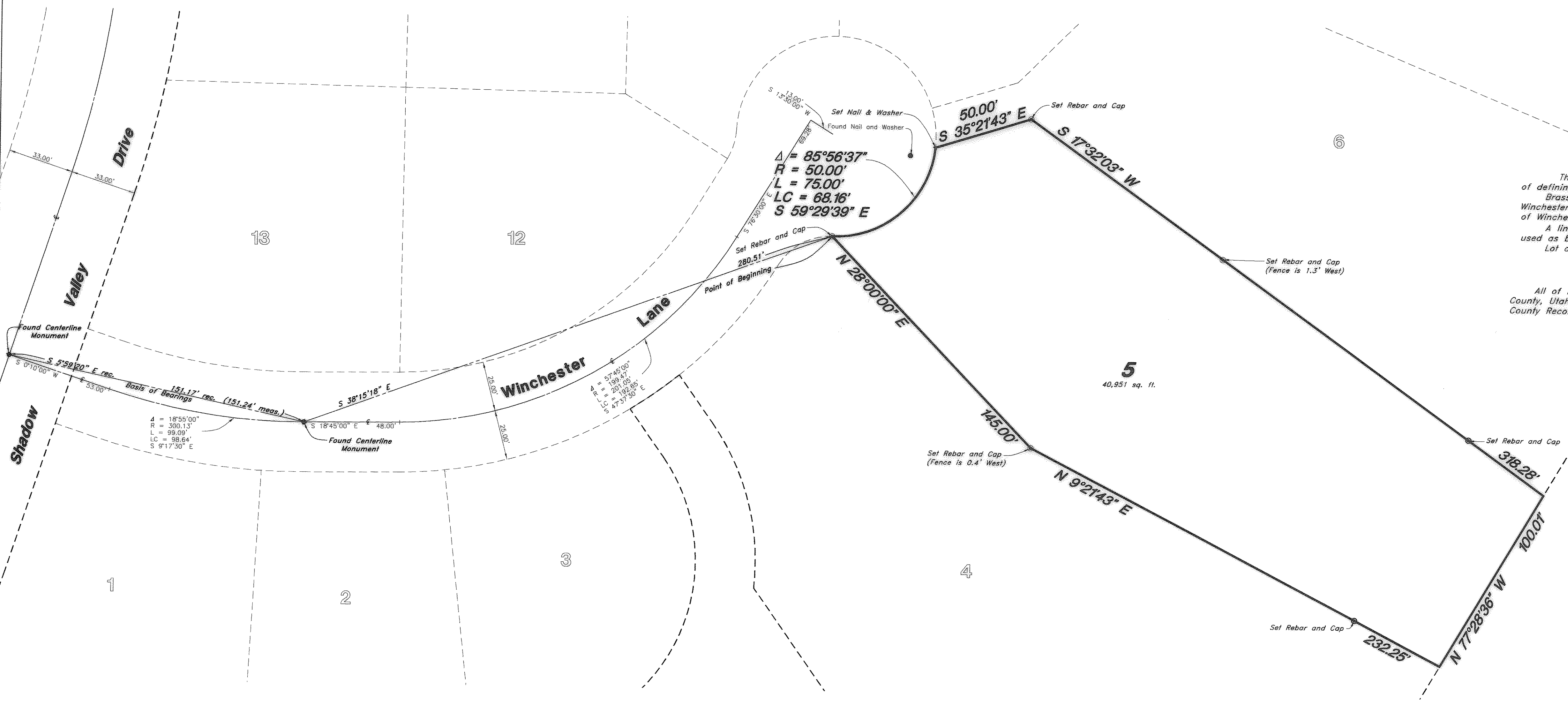


NARRATIVE

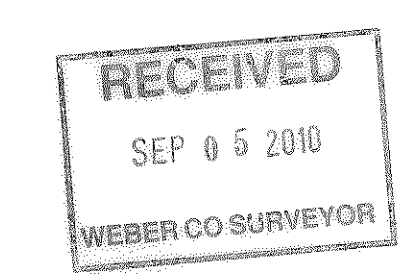
This survey was requested by Mr. Jeff Layton for the purpose of defining property boundary. Brass Cap Monuments were found at the intersection of Winchester Lane and Shadow Alley Drive, and at a point of tangency of Winchester Lane. A line bearing S 5°59'20" E between these two monuments was used as basis of bearings. Lot corners were monumented as depicted on this drawing.

BOUNDARY DESCRIPTION

All of Lot 5, Burch Hollow Subdivision No. 1, Ogden City, Weber County, Utah, according to the official plat thereof, on file in the Weber County Records Office.



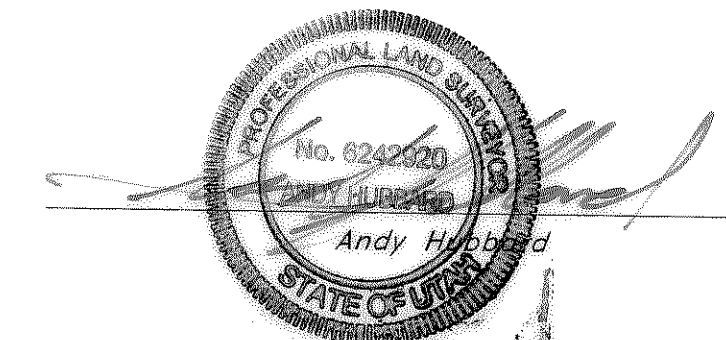
004471



SURVEYOR'S CERTIFICATE

I, Andy Hubbard, do hereby certify that I am a Registered Professional Land Surveyor, and that I hold Certificate No. 6242920, in accordance with Title 58, Chapter 22, of the Professional Engineers and Surveyors Licensing Act, and I have made a survey of the above described property according to Section 17-23-17 and that the above plat correctly shows the true dimensions of the property surveyed.

Date 8-16-2010



GREAT BASIN ENGINEERING
 5746 SOUTH 1475 EAST OGDEN, UTAH 84403
 MAIN (801)994-4515 S.L.C (801)521-0222 FAX (801)992-7544
 WWW.GREATBASINENGINEERING.COM

Property Survey
Laytonscape Burch Hollow
 5285 South Winchester Lane
 Ogden City, Weber County, Utah
 A part of Section 15, T5N, R1W, S18&M, U.S. Survey

10 May, 2010

SHEET NO. **C1**