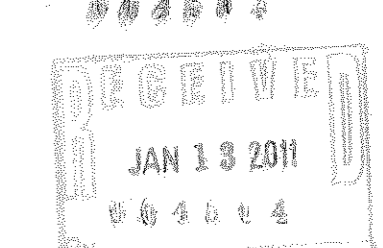
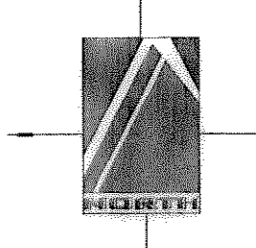
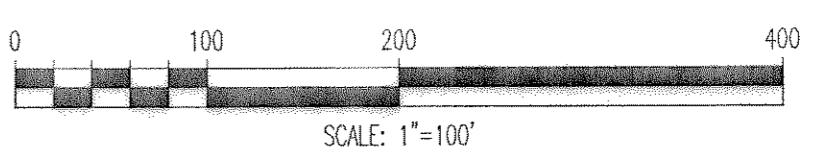
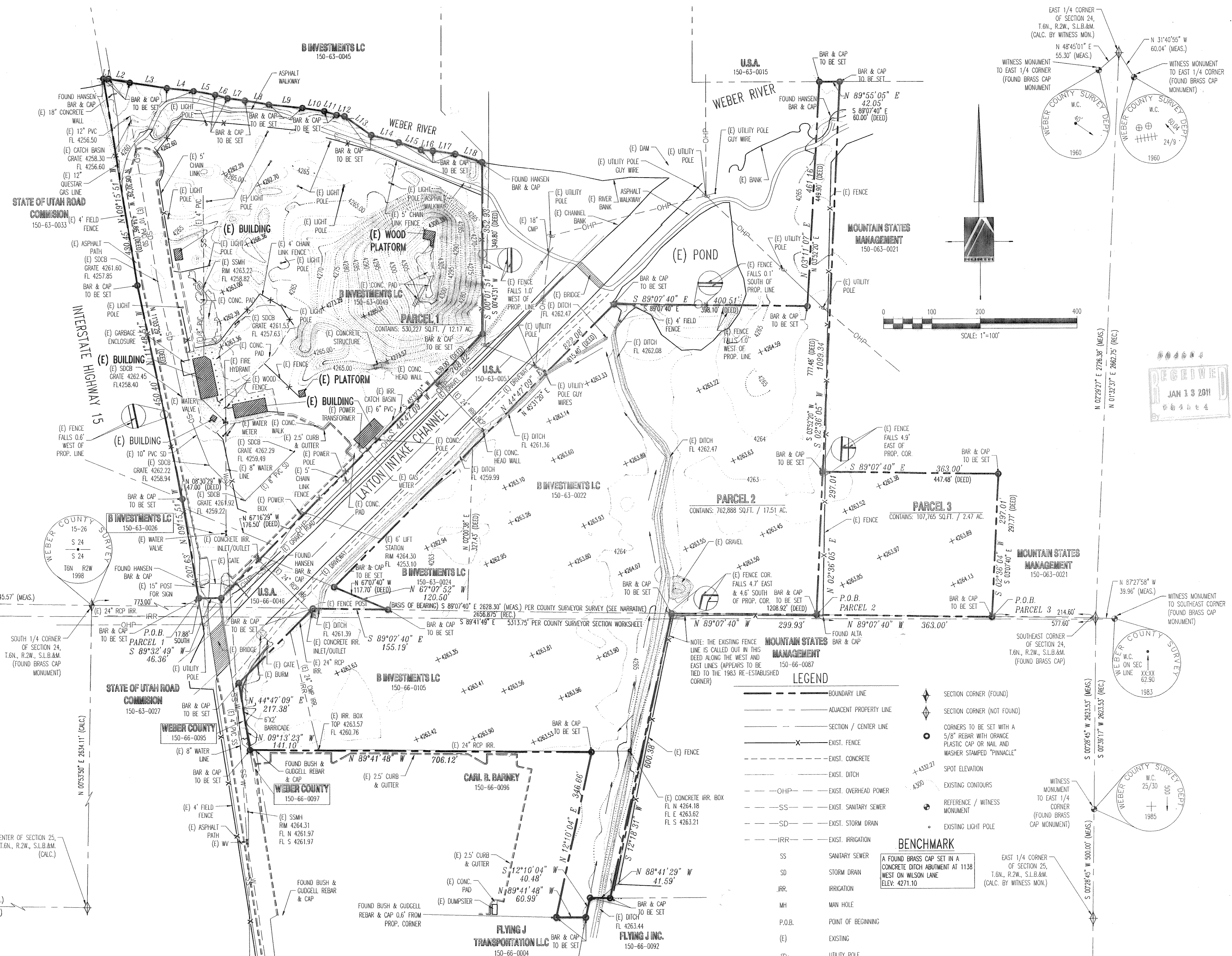


LINE	LENGTH	BEARING
L1	10.52	N 89°17'23" E
L2	44.85	S 79°11'50" E
L3	77.21	S 81°21'54" E
L4	55.67	S 83°27'14" E
L5	45.34	S 79°47'23" E
L6	26.87	S 74°11'41" E
L7	36.11	S 82°16'05" E
L8	50.07	S 80°13'46" E
L9	69.93	S 84°12'55" E
L10	45.59	S 81°09'57" E
L11	26.97	S 72°35'47" E
L12	16.51	N 80°35'11" W
L13	67.27	N 55°33'07" W
L14	58.44	S 75°41'18" E
L15	48.36	S 72°03'34" E
L16	24.53	N 85°38'59" W
L17	46.74	S 82°26'24" E
L18	57.75	N 73°23'56" W



NOTE: THE EXISTING FENCE LINE IS CALLED OUT IN THIS DEED ALONG THE WEST AND EAST LINES (APPEARS TO BE TIED TO THE 1983 RE-ESTABLISHED CORNER)

LEGEND	
---	BOUNDARY LINE
---	ADJACENT PROPERTY LINE
---	SECTION / CENTER LINE
-x-	EXIST. FENCE
---	EXIST. CONCRETE
---	EXIST. DITCH
---	OHP
---	EXIST. OVERHEAD POWER
---	EXIST. SANITARY SEWER
---	EXIST. STORM DRAIN
---	IRR
---	EXIST. IRRIGATION
SS	SANITARY SEWER
SD	STORM DRAIN
IRR	IRRIGATION
MH	MAN HOLE
P.O.B.	POINT OF BEGINNING
(E)	EXISTING
○	UTILITY POLE

BENCHMARK
A FOUND BRASS CAP SET IN A CONCRETE DITCH ABUTMENT AT 1138 WEST ON WILSON LANE ELEV: 4271.10

EAST 1/4 CORNER OF SECTION 25, T.6N., R.2W., S.L.B.&M. (CALC. BY WITNESS MON.)

PINNACLE
Engineering & Land Surveying, Inc.
1513 North Hillfield Rd., Suite #2
Layton, UT 84041
Phone: (801) 866-0676
Fax: (801) 866-0678

WEST HAVEN SUBDIVISION
BOUNDARY & TOPOGRAPHIC SURVEY
ZION DEVELOPMENT
2100 SOUTH INTERSTATE 15
WEST HAVEN, UT
JOB# 05-006

DATE	REVISION	BY	DATE
1/2005	RECORDED	SJF	1/25/05

DATE	DESIGNED BY	DATE
1/2005	RRM/JDL	1/2005

DATE	DRAWN BY	DATE
1/2005	RRM/JDL	1/2005

DATE	APPROVED BY	DATE
2/2005	SJF	2/2005

