

MATCH LINE SEE SHEET 4 OF 4

MATCH LINE SEE SHEET 4 OF 4

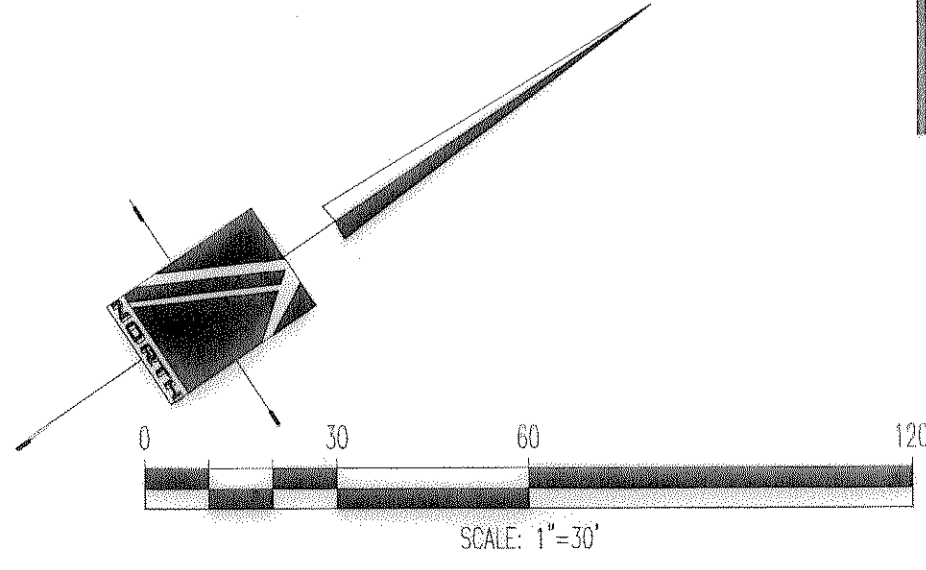
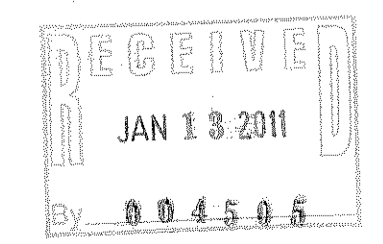
MATCH LINE SEE SHEET 3 OF 4



CURVE DATA
 $\Delta = 16^\circ 01' 23''$
 $R = 1096.89'$
 $L = 306.75'$

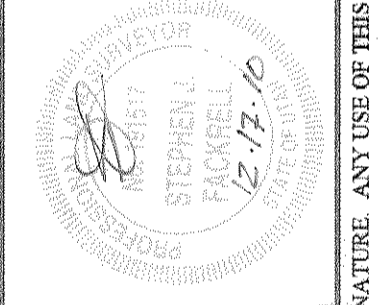
CURVE DATA
 $\Delta = 07^\circ 07' 08''$
 $R = 2819.78'$
 $L = 350.36'$

UTAH CENTRAL, FORMERLY DENVER AND RIO GRANDE WESTERN RAILROAD



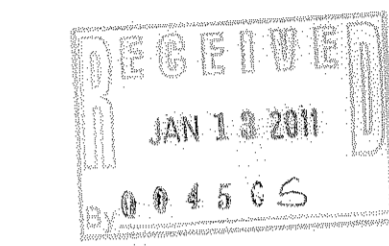
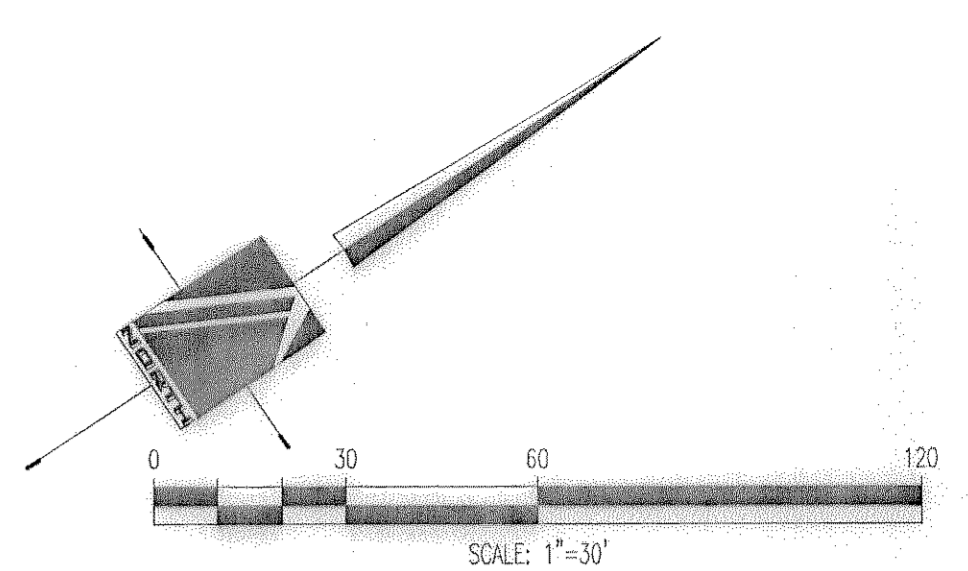
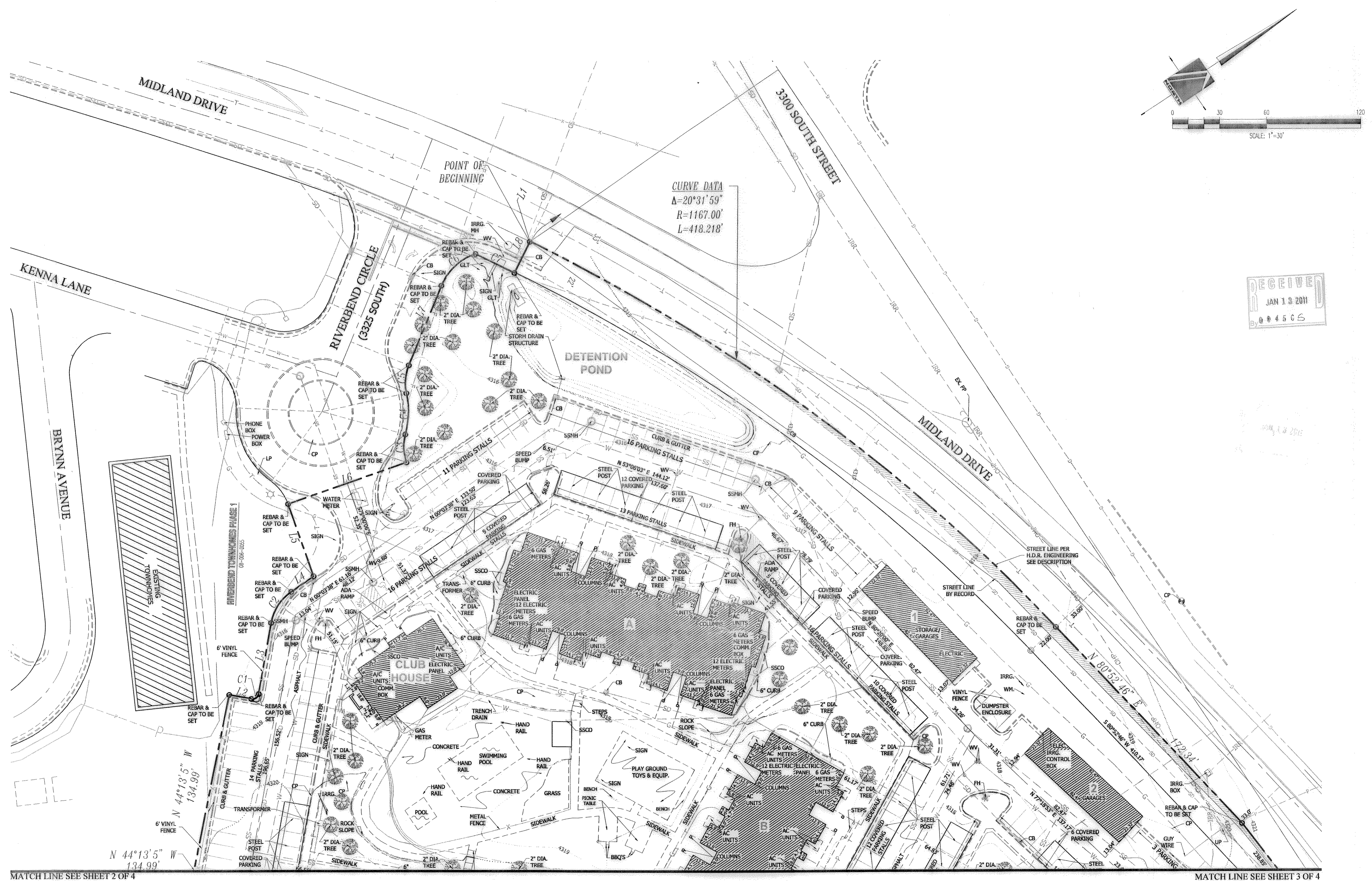
PINNACLE
 Engineering & Land Surveying, Inc.
 Layton • West Bountiful • Mount Pleasant • St. George
 2720 North 350 West, Suite #108
 Layton, UT 84041
 Phone: (801) 773-1910
 Fax: (801) 773-1925

SETTLERS LANDING
 ALTA/ACSM SURVEY / FHA Project No. 105-35156
 FOR: SETTLERS LANDING, LLC
 PROJ: MIDLAND DRIVE AND 3300 WEST
 WEST HAVEN, UTAH
 JOB# 09-084



DATE	REVISION	BY	DATE
12/24/07	Submittal UP - Redlines	SJF	12/24/07
12/12/09	Update street dedication	SPB	12/12/09
12/23/09	AS-CONSTRUCTED ALTA/ACSM SURVEY & Title Report	SPB	12/23/09
01/11/10	Revised file - stake record as current boundary	SPB	01/11/10
02/05/10	Label Area Certificate & Revised Narrative Item #4	SPB	02/05/10

SURVEYED BY	DATE	DESIGNED BY	DATE	DRAWN BY	DATE	APPROVED BY	DATE
TW/SPB	6/2007	SPB/SJF	6/2007	SPB/SJF	6/2007	SJF	6/2007

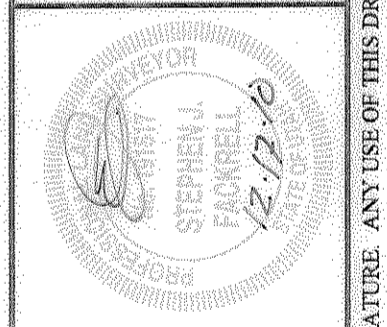


MATCH LINE SEE SHEET 2 OF 4

MATCH LINE SEE SHEET 3 OF 4

PINNACLE
 Engineering & Land Surveying, Inc.
 Layton • West Bountiful • Mount Pleasant • St. George
 2720 North 350 West, Suite #108
 Layton, UT 84041
 Phone: (801) 773-1910
 Fax: (801) 773-1925

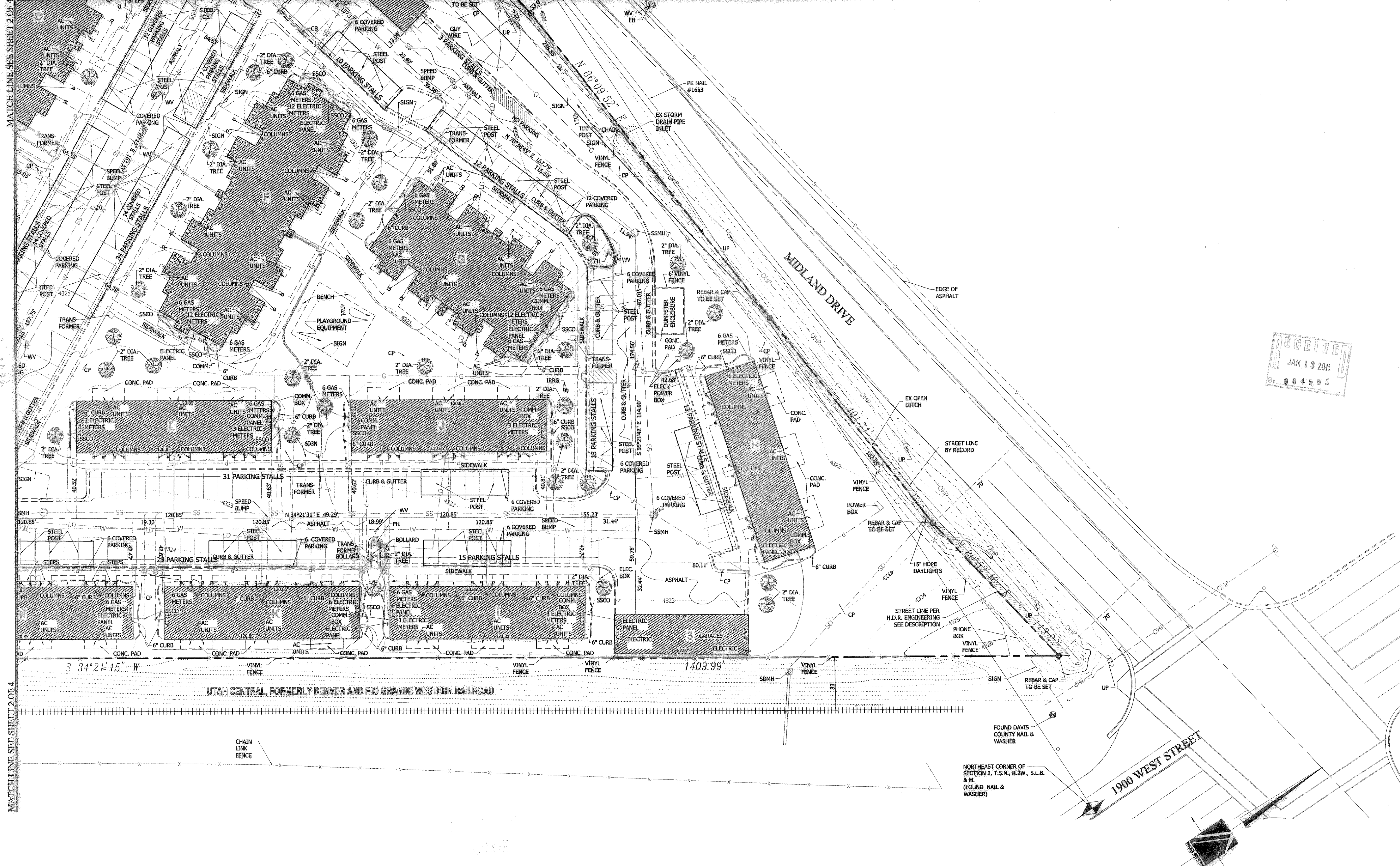
SETTLERS LANDING
 ALTA/ACSM SURVEY / FHA Project No. 105-35156
 FOR: SETTLERS LANDING, LLC
 PROJ: MIDLAND DRIVE AND 3300 WEST
 WEST HAVEN, UTAH
 JOB# 09-084



BY	DATE	REVISION
DESIGNED BY	6/2007	1. Initial design
DRAWN BY	6/2007	2. Update street dedication
CHECKED BY	6/2007	3. Update street dedication
APPROVED BY	6/2007	4. Final design

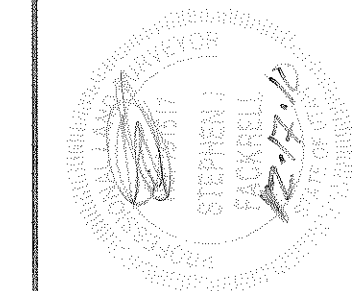
ALL INFORMATION SHOWN HEREON IS NOT FINAL OR APPROVED WITHOUT THE GOVERNING AGENCY(S) STAMP AND SIGNATURE. ANY USE OF THIS DRAWING AND ITS CONTENT WITHOUT SAID APPROVAL IS DONE AT THE INDIVIDUAL'S OWN RISK. PINNACLE ENGINEERING & LAND SURVEYING, INC. DOES NOT ASSUME LIABILITY FOR ANY SUCH USE.

MATCH LINE SEE SHEET 4 OF 4



RECEIVED
JAN 13 2011
004505

SETTLERS LANDING
ALTA/CSDM SURVEY / FHA Project No. 105-35156
FOR: SETTLERS LANDING, LLC
PROJ: MIDLAND DRIVE AND 3300 WEST
WEST HAVEN, UTAH
JOB# 09-084



DATE	REVISION	BY	DATE
6/2007	UP - Redlines	SPB	7/17/09
6/2007	UP - Redlines	SPB	7/17/09
6/2007	UP - Redlines	SPB	7/17/09
6/2007	UP - Redlines	SPB	7/17/09
6/2007	UP - Redlines	SPB	7/17/09
6/2007	UP - Redlines	SPB	7/17/09
6/2007	UP - Redlines	SPB	7/17/09
6/2007	UP - Redlines	SPB	7/17/09
6/2007	UP - Redlines	SPB	7/17/09

SHEET 3 OF 4

PINNACLE
Engineering & Land Surveying, Inc.
Layton • West Bountiful • Mount Pleasant • St. George
2720 North 350 West, Suite #108 Phone: (801) 773-1910
Layton, UT 84041 Fax: (801) 773-1925

ALL INFORMATION SHOWN HEREON IS NOT FINAL OR APPROVED WITHOUT THE GOVERNING AGENCY(S) STAMP AND SIGNATURE. ANY USE OF THIS DRAWING AND ITS CONTENT WITHOUT SAID APPROVAL IS DONE AT THE INDIVIDUAL'S OWN RISK. PINNACLE ENGINEERING & LAND SURVEYING, INC. DOES NOT ASSUME LIABILITY FOR ANY SUCH USE.