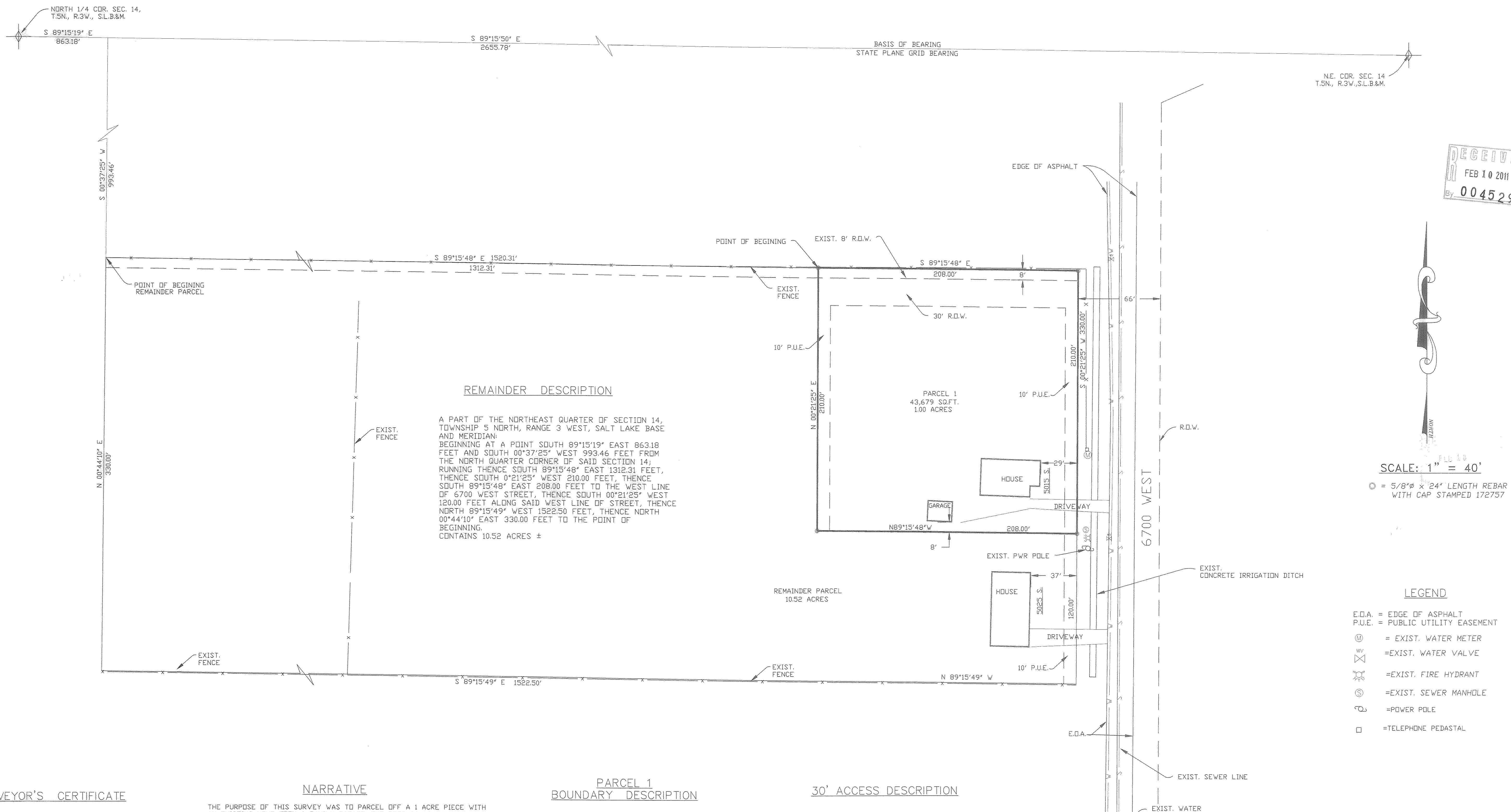


RECORD OF SURVEY

A PART OF THE N.E. 1/4 OF SECTION 14, T. 5 N., R. 3 W., S.L.B.&M. HOOPER CITY, WEBER COUNTY, UTAH



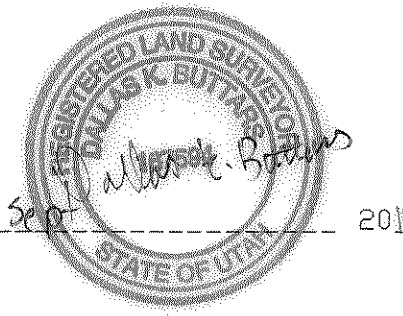
RECEIVED
FEB 10 2011
By 004529

SCALE: 1" = 40'
 ○ = 5/8"Ø x 24" LENGTH REBAR WITH CAP STAMPED 172757

- LEGEND**
- E.D.A. = EDGE OF ASPHALT
 - P.U.E. = PUBLIC UTILITY EASEMENT
 - ⊙ = EXIST. WATER METER
 - ⊗ = EXIST. WATER VALVE
 - ⊕ = EXIST. FIRE HYDRANT
 - ⊚ = EXIST. SEWER MANHOLE
 - ⊖ = POWER POLE
 - = TELEPHONE PEDASTAL

SURVEYOR'S CERTIFICATE

I, DALLAS K. BUTTARS, HOLDING LICENSE NUMBER 167594 IN ACCORDANCE WITH TITLE 58, CHAPTER 22, PROFESSIONAL ENGINEERS AND LAND SURVEYORS LICENSING ACT, HAVE COMPLETED A SURVEY OF THE PROPERTY DESCRIBED ON THE PLAT IN ACCORDANCE WITH SECTION 17-23-17 AND HAVE VERIFIED ALL MEASUREMENTS AND PLACED MONUMENTS AS REPRESENTED ON THE PLAT.



SIGNED THIS 15 DAY OF Sept 2010.

NARRATIVE

THE PURPOSE OF THIS SURVEY WAS TO PARCEL OFF A 1 ACRE PIECE WITH AN EXISTING HOME FROM A FAMILY ESTATE. THE DEED CALLS ARE TYPICAL OF A PERFECT 5280' SQUARE SECTION. THIS SURVEY AND DESCRIPTION IS USING A SECTION BREAKDOWN WITH THE CURRENT SECTION CORNER TIES AND DIMENSIONS. THE EAST DEED IS HELD TO THE WEST LINE OF 6700 WEST STREET. THE BEARINGS ARE STATE PLANE GRID BEARINGS AS PUBLISHED BY THE WEBER COUNTY SURVEYORS OFFICE.

PARCEL 1 BOUNDARY DESCRIPTION

A PART OF THE NORTHEAST QUARTER OF SECTION 14, TOWNSHIP 5 NORTH, RANGE 3 WEST, SALT LAKE BASE AND MERIDIAN. BEGINNING AT A POINT SOUTH 89°15'19" EAST 863.18 FEET, SOUTH 00°37'25" WEST 993.46 FEET AND SOUTH 89°15'48" EAST 1312.31 FEET FROM THE NORTH QUARTER CORNER OF SAID SECTION 14; RUNNING THENCE SOUTH 89°15'48" EAST 208.00 FEET TO THE WEST LINE OF 6700 WEST STREET, THENCE SOUTH 00°21'25" WEST 30.00 FEET ALONG THE WEST LINE OF SAID STREET, THENCE NORTH 89°15'48" WEST 208.00 FEET, THENCE NORTH 00°21'25" EAST 210.00 FEET TO THE POINT OF BEGINNING. CONTAINS 1.00 ACRES

30' ACCESS DESCRIPTION

A PART OF THE NORTHEAST QUARTER OF SECTION 14, TOWNSHIP 5 NORTH, RANGE 3 WEST, SALT LAKE BASE AND MERIDIAN. BEGINNING AT A POINT SOUTH 89°15'19" EAST 863.18 FEET, SOUTH 00°37'25" WEST 993.46 FEET, SOUTH 89°15'48" EAST 1312.31 FEET FROM THE NORTHEAST CORNER OF SAID QUARTER SECTION; RUNNING THENCE SOUTH 89°15'48" EAST 208.00 FEET TO THE WEST LINE OF 6700 WEST STREET, THENCE SOUTH 00°21'25" WEST 30.00 FEET ALONG THE WEST LINE OF SAID STREET, THENCE NORTH 89°15'48" WEST 208.00 FEET, THENCE NORTH 00°21'25" EAST 210.00 FEET TO THE POINT OF BEGINNING.

LANDMARK SURVEYING, INC.
A COMPLETE LAND DEVELOPMENT SERVICE
4646 S. 3500 W. #A-3, WEST HAVEN, UTAH 84401
PHONE 801-731-4075

CLIENT: MONTAG/MATHEWS
 LOCATION: PART OF THE N.E. 1/4 OF SEC. 14
 T. 5 N., R. 3 W., S.L.B.&M.
 SURVEYED: JULY 2008

REVISIONS:	DRAWN BY: DB/KT
09-16-09	CHECKED BY: D.B.
	DATE: 07-11-08
	FILE: 3049