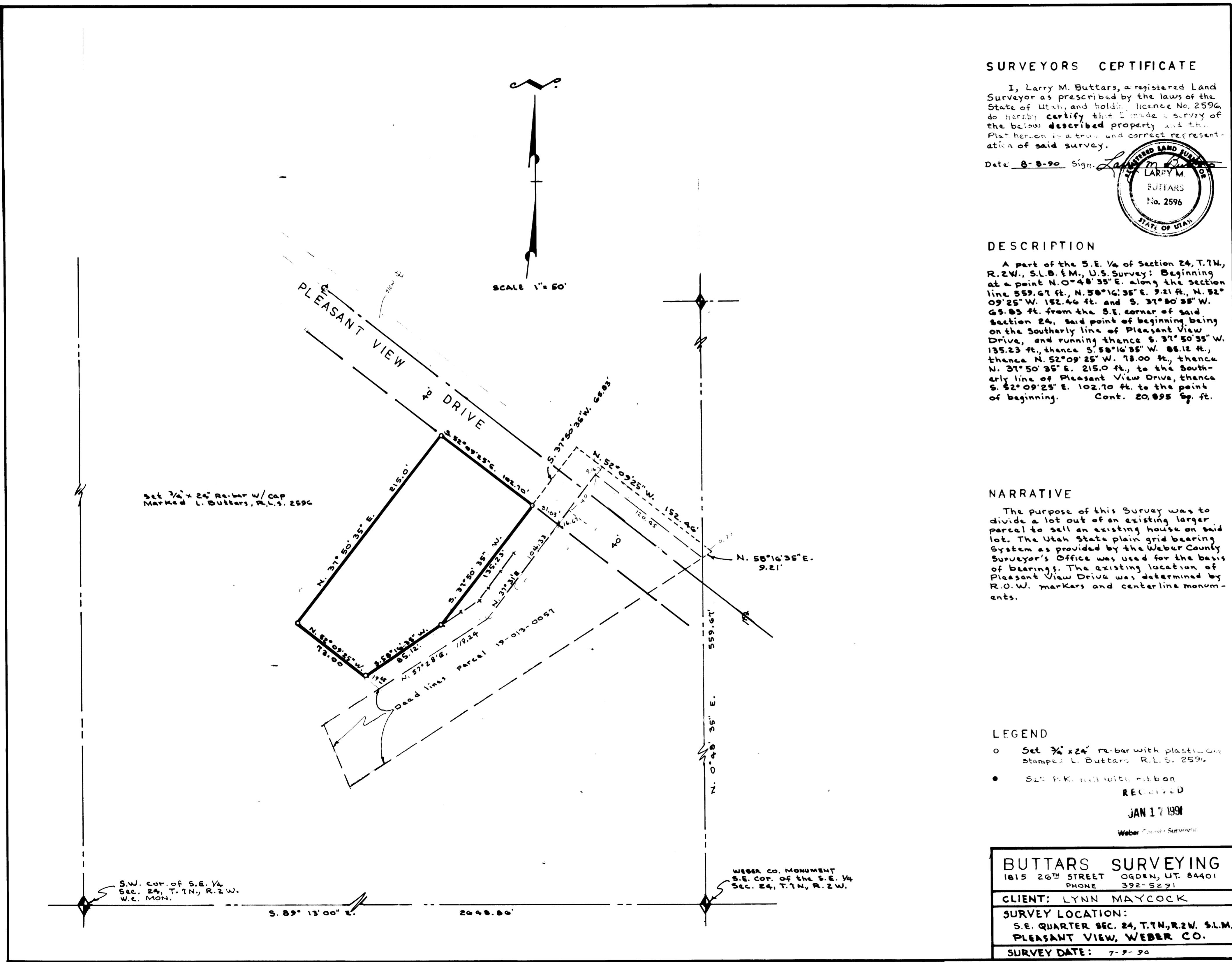


PLAN HOLD CORPORATION • IRVINE, CALIFORNIA
REORDER BY NUMBER 075AR
POSITION EDGE OF PRINT ON THIS LINE

PLAN HOLD CORPORATION • IRVINE, CALIFORNIA
REORDER BY NUMBER 075AR
POSITION EDGE OF PRINT ON THIS LINE

PLAN HOLD CORPORATION • IRVINE, CALIFORNIA
REORDER BY NUMBER 075AR
POSITION EDGE OF PRINT ON THIS LINE

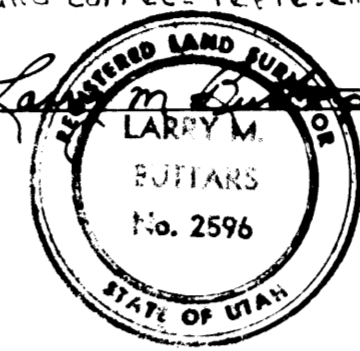
PLAN HOLD CORPORATION • IRVINE, CALIFORNIA
REORDER BY NUMBER 075AR
POSITION EDGE OF PRINT ON THIS LINE



SURVEYORS CERTIFICATE

I, Larry M. Butters, a registered Land Surveyor as prescribed by the laws of the State of Utah, and holding License No. 2596, do hereby certify that I made a survey of the below described property and the Plat hereon is a true and correct representation of said survey.

Date: 8-8-90 Sign: *Larry M. Butters*



DESCRIPTION

A part of the S.E. 1/4 of Section 24, T.7N, R.2W, S.L.M., U.S. Survey: Beginning at a point N. 0° 48' 35" E. along the section line 559.67 ft., N. 58° 16' 35" E. 9.21 ft., N. 52° 09' 25" W. 152.46 ft. and S. 37° 50' 35" W. 65.85 ft. from the S.E. corner of said Section 24, said point of beginning being on the southerly line of Pleasant View Drive, and running thence S. 37° 50' 35" W. 135.23 ft., thence S. 58° 16' 35" W. 85.12 ft., thence N. 52° 09' 25" W. 78.00 ft., thence N. 37° 50' 35" E. 215.0 ft., to the southerly line of Pleasant View Drive, thence S. 52° 09' 25" E. 102.70 ft. to the point of beginning. Cont. 20,895 sq. ft.

NARRATIVE

The purpose of this Survey was to divide a lot out of an existing larger parcel to sell an existing house on said lot. The Utah State plain grid bearing System as provided by the Weber County Surveyor's Office was used for the basis of bearings. The existing location of Pleasant View Drive was determined by R.O.W. markers and center line monuments.

LEGEND

- Set 3/4 x 24 re-bar with plastic cap stamped L. Butters, R.L.S. 2596
 - Set P.K. nail with ribbon
- RECEIVED
JAN 17 1991
Weber County Surveyor

BUTTERS SURVEYING	
1815 26 TH STREET	OGDEN, UT. 84401
PHONE 392-5291	
CLIENT: LYNN MAYCOCK	
SURVEY LOCATION:	
S.E. QUARTER SEC. 24, T.7N, R.2W, S.L.M.	
PLEASANT VIEW, WEBER CO.	
SURVEY DATE: 7-9-90	