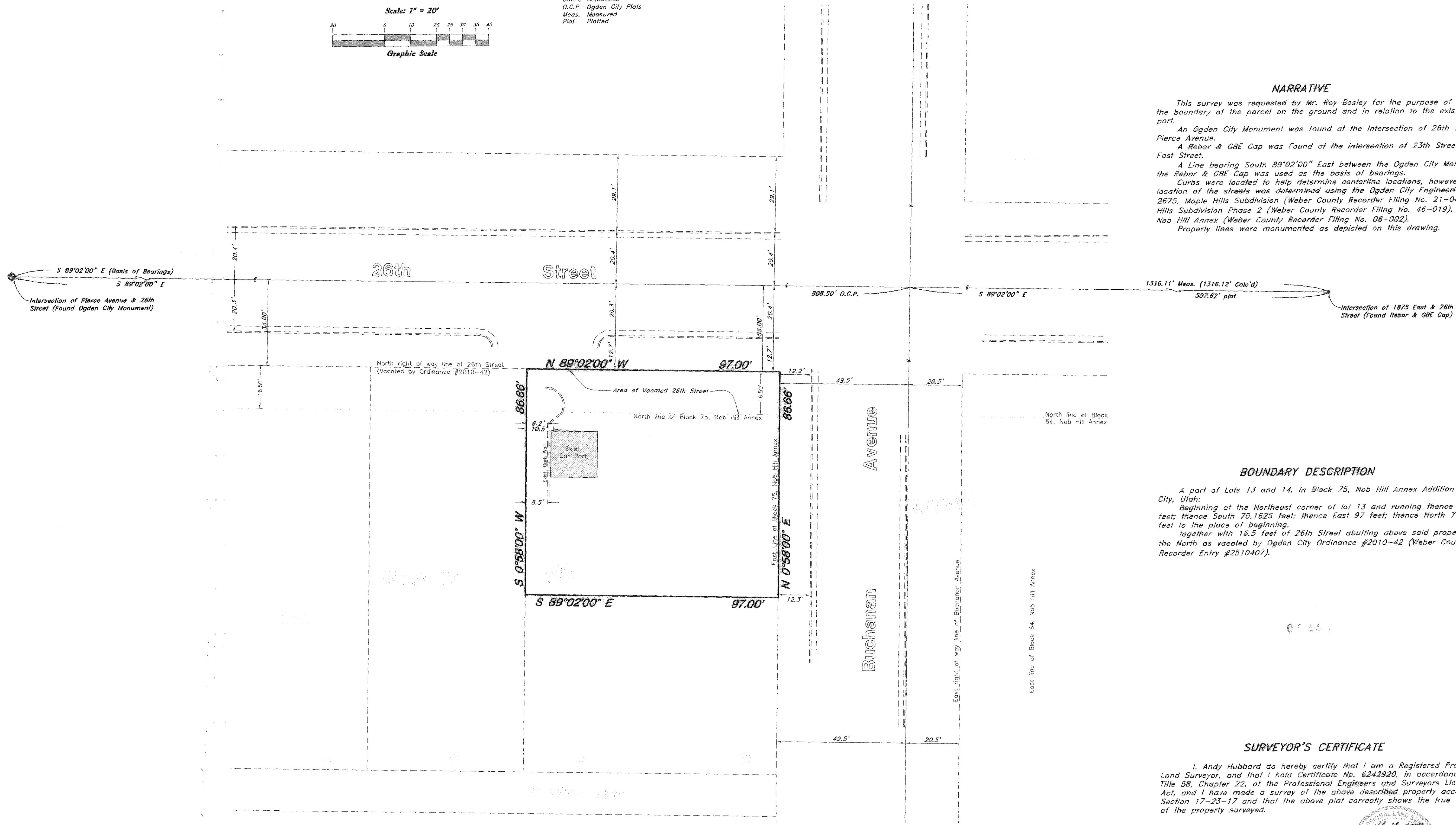


- LEGEND**
- ▲ Set Nail & Washer
 - Set Rebar & Cap w/ Fancapost
 - Set Hub & Tack
 - ⊕ Found Ogden City Monument
 - (Rad.) Radial Line
 - (N/R) Non-Radial Line
 - Calc'd Calculated
 - O.C.P. Ogden City Plats
 - Meas. Measured
 - Plat Platted



NARRATIVE

This survey was requested by Mr. Roy Bosley for the purpose of locating the boundary of the parcel on the ground and in relation to the existing car port.

An Ogden City Monument was found at the Intersection of 26th Street & Pierce Avenue.

A Rebar & GBE Cap was Found at the intersection of 23th Street & 1825 East Street.

A Line bearing South 89°02'00" East between the Ogden City Monument & the Rebar & GBE Cap was used as the basis of bearings.

Curbs were located to help determine centerline locations, however the location of the streets was determined using the Ogden City Engineering Plat 2675, Maple Hills Subdivision (Weber County Recorder Filing No. 21-044), oak Hills Subdivision Phase 2 (Weber County Recorder Filing No. 46-019), and the Nob Hill Annex (Weber County Recorder Filing No. 06-002).

Property lines were monumented as depicted on this drawing.

BOUNDARY DESCRIPTION

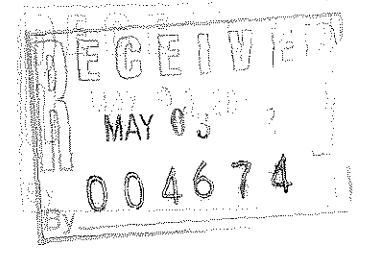
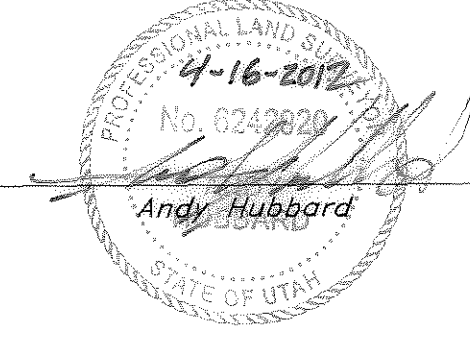
A part of Lots 13 and 14, in Block 75, Nob Hill Annex Addition to Ogden City, Utah:

Beginning at the Northeast corner of lot 13 and running thence West 97 feet; thence South 70.1625 feet; thence East 97 feet; thence North 70.1625 feet to the place of beginning.

together with 16.5 feet of 26th Street abutting above said property on the North as vacated by Ogden City Ordinance #2010-42 (Weber County Recorder Entry #2510407).

SURVEYOR'S CERTIFICATE

I, Andy Hubbard do hereby certify that I am a Registered Professional Land Surveyor, and that I hold Certificate No. 6242920, in accordance with Title 58, Chapter 22, of the Professional Engineers and Surveyors Licensing Act, and I have made a survey of the above described property according to Section 17-23-17 and that the above plat correctly shows the true dimensions of the property surveyed.



GREAT BASIN ENGINEERING

574 S SOUTH 1475 EAST OGDEN, UTAH 84403
 MAIN: (801) 392-7544 FAX: (801) 392-7544
 WWW.GREATBASINENGINEERING.COM

Property Survey

Mathew Domek

26th Street & Buchanan Avenue
 Part of Lots 13 & 14, Block 75, Nob Hill Annex
 being a part of the N.E. 1/4 of Section 34, T6N, R1W, SLB&M