

DRAWING NUMBER
000469

PLAN HOLD CORPORATION • IRVINE, CALIFORNIA
REORDER BY NUMBER 075AR

DRAWING NUMBER
000469

PLAN HOLD CORPORATION • IRVINE, CALIFORNIA
REORDER BY NUMBER 075AR

DRAWING NUMBER
000469

PLAN HOLD CORPORATION • IRVINE, CALIFORNIA
REORDER BY NUMBER 075AR

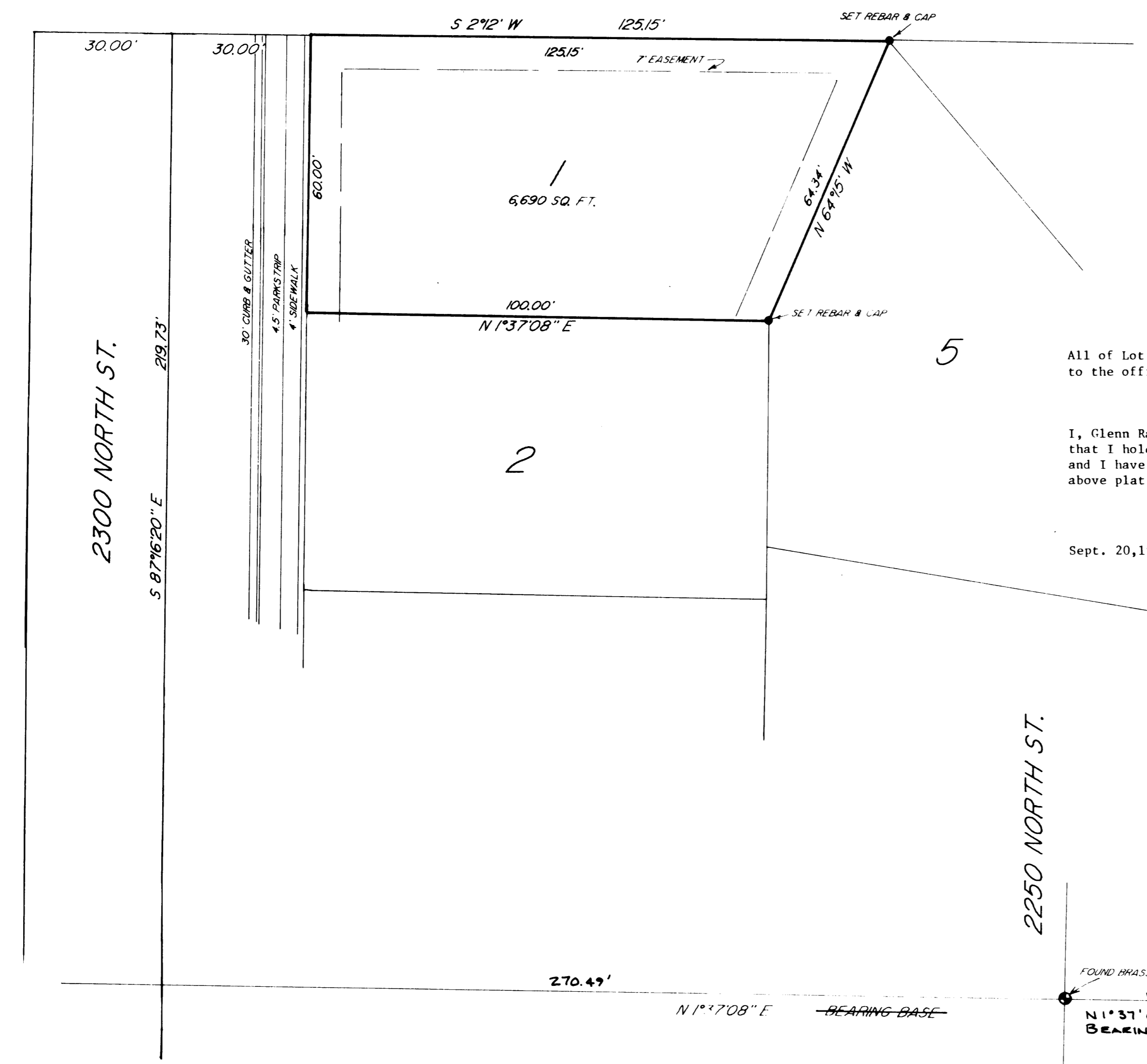
DRAWING NUMBER
000469

PLAN HOLD CORPORATION • IRVINE, CALIFORNIA
REORDER BY NUMBER 075AR



SCALE 1" = 20'

SURVEY WAS DONE AS A CONDITION OF SALE



All of Lot 1, Fairway Park No. 1, Harrisville City, Weber County, Utah according to the official plat thereof.

I, Glenn Ravenberg, do hereby certify that I am a registered Land Surveyor, and that I hold certificate No. 3875, as prescribed by the Laws of the State of Utah, and I have made a survey of the above described property. I further certify that above plat correctly shows the true dimensions of the property surveyed.

Glenn Ravenberg
Glenn Ravenberg

Sept. 20, 1989

PART OF THE S.E. 1/4 OF SEC. 31, T7N, R1W

INTERMOUNTAIN SURVEYING
Layton, Utah 84041 (801) 544-1170

PROPERTY SURVEY
FOR
1ST INT. BANK
LOT 1 FAIRWAY PARK

RECEIVED

JAN 25 1990

Weber County Surveyor

SEPT. 20, 1989 1" = 20' PS-89-88