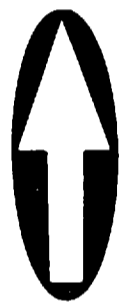
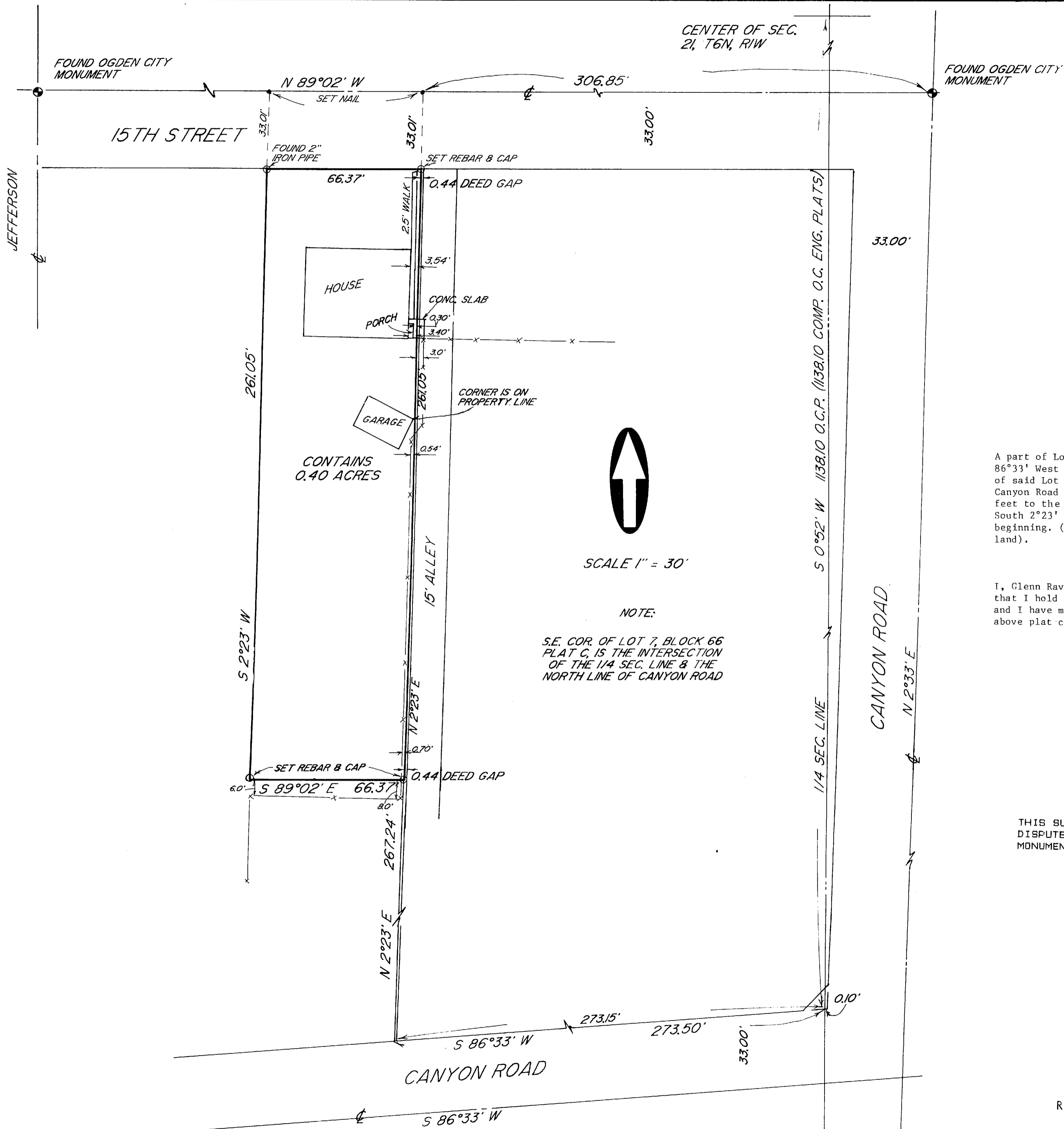


PLAN HOLD CORPORATION • IRVINE, CALIFORNIA
REORDER BY NUMBER 075AR
POSITION EDGE OF PRINT ON THIS LINE

PLAN HOLD CORPORATION • IRVINE, CALIFORNIA
REORDER BY NUMBER 075AR
POSITION EDGE OF PRINT ON THIS LINE

PLAN HOLD CORPORATION • IRVINE, CALIFORNIA
REORDER BY NUMBER 075AR
POSITION EDGE OF PRINT ON THIS LINE

PLAN HOLD CORPORATION • IRVINE, CALIFORNIA
REORDER BY NUMBER 075AR
POSITION EDGE OF PRINT ON THIS LINE



SCALE 1" = 30'

NOTE:

S.E. COR. OF LOT 7, BLOCK 66
PLAT C, IS THE INTERSECTION
OF THE 1/4 SEC. LINE & THE
NORTH LINE OF CANYON ROAD

A part of Lot 7, Block 66, Plat C of Ogden City Survey: beginning at a point South 86°33' West 273.50 feet and North 2°23' East 267.24 feet from the Southeast corner of said Lot 7 said Southeast corner being the intersection of the North line of Canyon Road and the quarter Section line, thence running North 2°23' East 261.05 feet to the South line of Street, thence North 89°02' West 66.37 feet, thence South 2°23' West 261.05 feet, thence South 89°02' East 66.37 feet to the place of beginning. (Excepting therefrom all rights of way pertaining to above described land).

I, Glenn Ravenberg, do hereby certify that I am a registered Land Surveyor, and that I hold certificate No. 3835, as prescribed by the Laws of the State of Utah, and I have made a survey of the above described property. I further certify that above plat correctly shows the true dimensions of the property surveyed.

Glenn Ravenberg
 Glenn Ravenberg
 SURVEYOR AND SURVEYOR
 State of Utah

THIS SURVEY WAS DONE AT THE REQUEST OF MR ROBERTSON BECAUSE OF A DISPUTE OVER THE DRIVE WAY AND THE USE OF THE ALLEY. OGDEN CITY MONUMENTS WERE LOCATED AS SHOWN AND USED FOR CONRTOL.

RECEIVED
JAN 25 1989
Weber County Surveyor

INTERMOUNTAIN SURVEYING
 Layton, Utah 84041 (801) 544-1170
 PROPERTY SURVEY
 FOR
 HAL ROBERTSON
 PART OF LOT 7, BLOCK 66, PLAT C, O.C.S.
 AUG. 25, 1989 1" = 30' PS-89-81