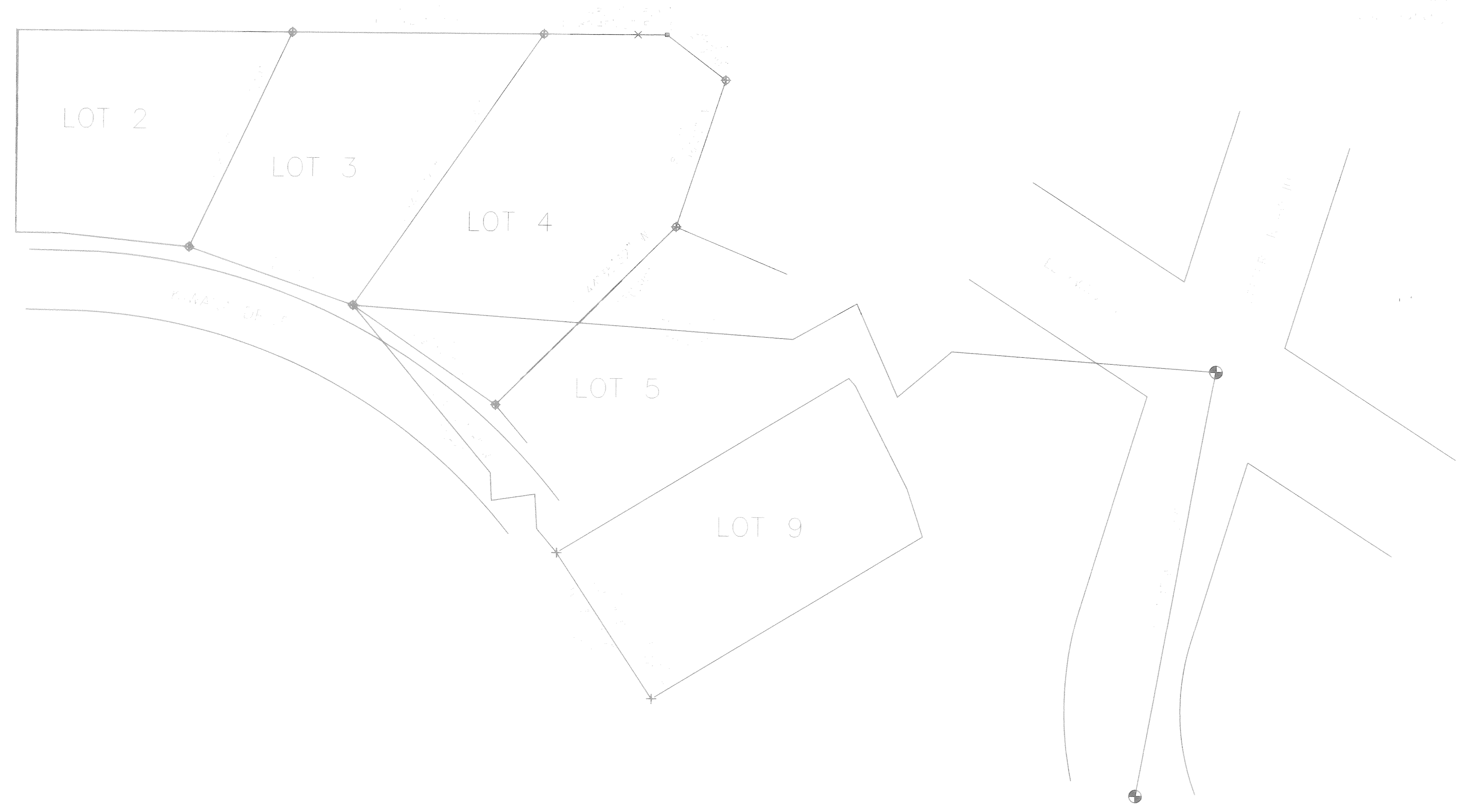
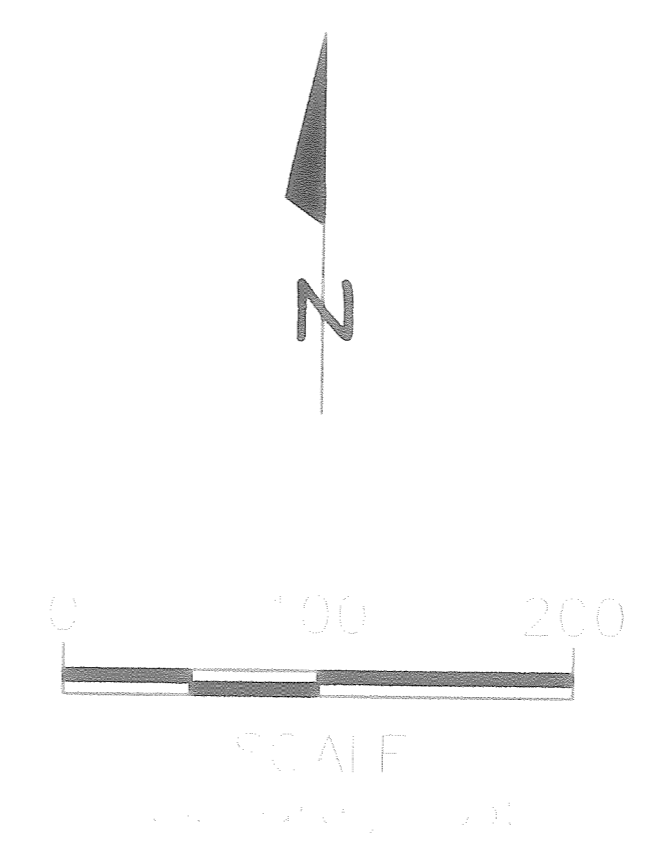


PURPOSE:

THE PURPOSE OF THIS SURVEY IS TO DEFINE THE BOUNDARIES OF LOTS 3, 4, 5 AND 9 OF THE KIWANA SUBDIVISION, T. 5 N., R. 1 W., S. 15 E., WEBER COUNTY, UTAH.

THE SURVEY WAS CONDUCTED BY MEASUREMENTS OF DISTANCES AND ANGLES AND BY THE USE OF A TOTAL STATION. THE SURVEY WAS CONTROLLED BY THE ADJACENT SURVEYS AND BY THE SURVEY OF THE KIWANA SUBDIVISION, T. 5 N., R. 1 W., S. 15 E., WEBER COUNTY, UTAH, BY MERRELL D. CASPER, P.L.S., 1987.

THE CENTER LINE OF THE HIGHWAY SHOWN ON THIS SURVEY IS THE CENTER LINE OF THE HIGHWAY AS SHOWN ON THE PLAT OF THE KIWANA SUBDIVISION, T. 5 N., R. 1 W., S. 15 E., WEBER COUNTY, UTAH, BY MERRELL D. CASPER, P.L.S., 1987.



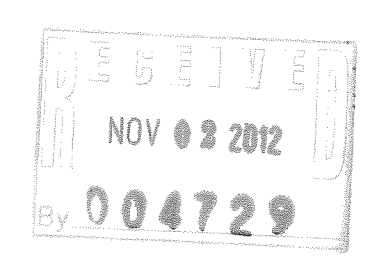
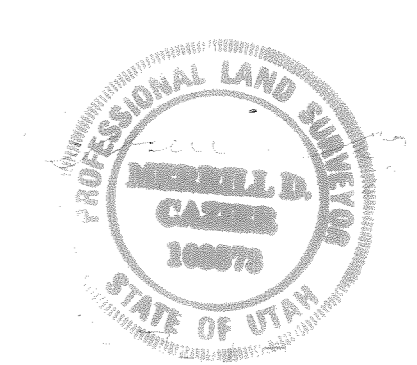
LEGAL DESCRIPTION TO LOT 3
LOT 3 # 02-031-043

ALL OF THAT PORTION OF THE KIWANA SUBDIVISION, T. 5 N., R. 1 W., S. 15 E., WEBER COUNTY, UTAH, AS SHOWN ON THE PLAT OF THE KIWANA SUBDIVISION, T. 5 N., R. 1 W., S. 15 E., WEBER COUNTY, UTAH, BY MERRELL D. CASPER, P.L.S., 1987.

LEGAL DESCRIPTION TO LOT 4
LOT 4 # 02-031-044

ALL OF THAT PORTION OF THE KIWANA SUBDIVISION, T. 5 N., R. 1 W., S. 15 E., WEBER COUNTY, UTAH, AS SHOWN ON THE PLAT OF THE KIWANA SUBDIVISION, T. 5 N., R. 1 W., S. 15 E., WEBER COUNTY, UTAH, BY MERRELL D. CASPER, P.L.S., 1987.

- KEY
- DISTANCE
 - DISTANCE
 - × DISTANCE
 - DISTANCE
 - DISTANCE
 - ⊕ DISTANCE
 - + DISTANCE



DATE OF SURVEY: _____

BY: _____

FOR: _____

BY: _____

KEITH E. & BETTY J. EVANS lot 3
MILLARD W. BUTLER lot 4

KIWANA SUBDIVISION NO. 2
N.W. 1/4 SECTION 15, T. 5 N., R. 1 W., S. 15 E.
WEBER COUNTY, UTAH

MERRELL D. CASPER, P.L.S.
 100670
 100670
 100670