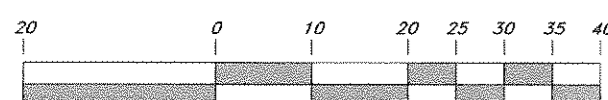


Scale: 1" = 20'

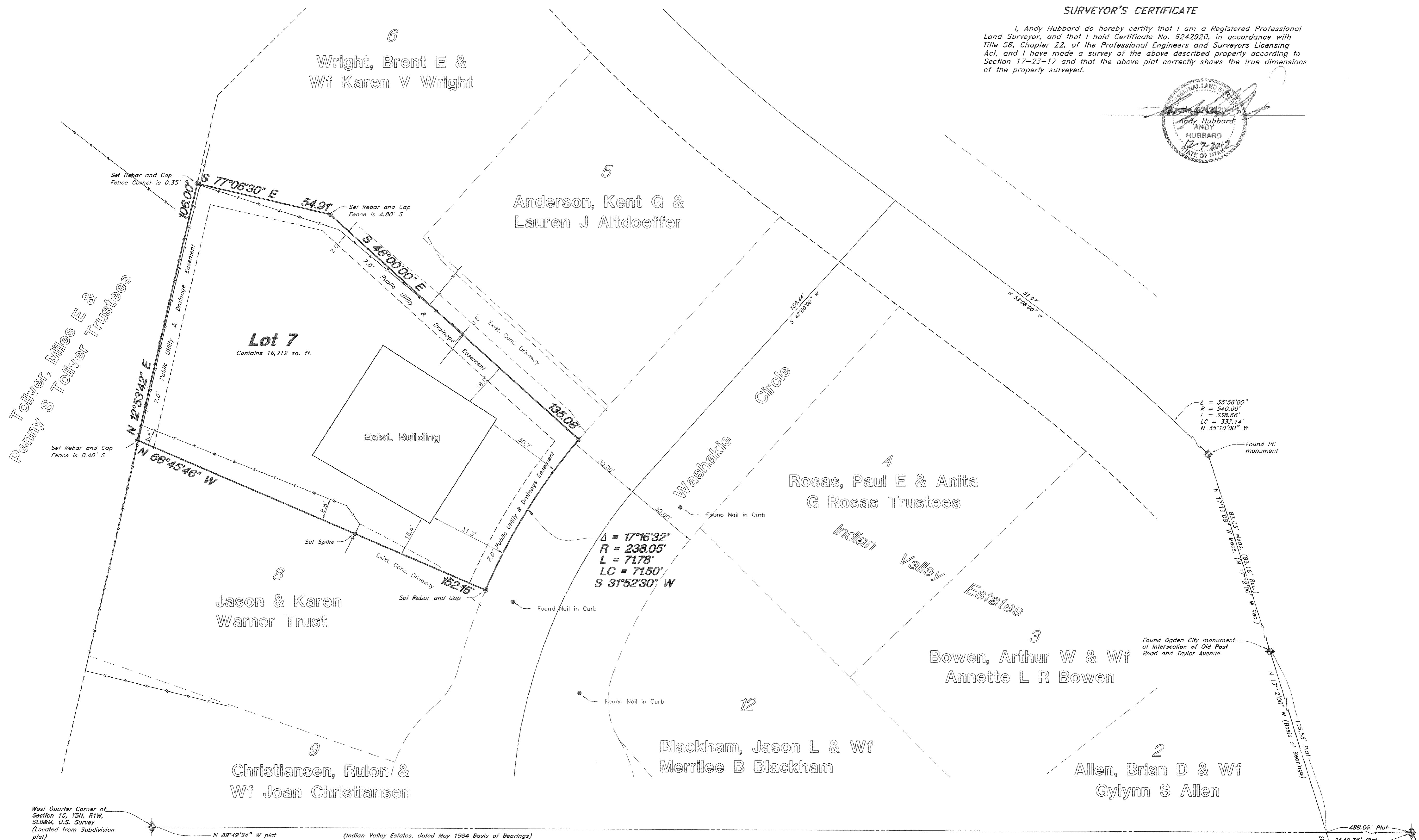


Graphic Scale

Legend

(Note: All items may not appear on drawing)

- San. Sewer Manhole
- Water Manhole
- Storm Drain Manhole
- Electrical Manhole
- Catch Basins
- Exist. Fire Hydrant
- Fire Hydrant
- Exist. Water Valve
- Water Valve
- Sanitary Sewer
- Utility Water
- Gas Line
- Irrigation Line
- Storm Drain
- Telephone Line
- Secondary Waterline
- Power Line
- Fire Line
- Land Drain
- Power pole
- Power pole w/guy
- Light Pole
- Fence
- Flowline of ditch
- Overhead Power line
- Corrugated Metal Pipe
- Concrete Pipe
- Reinforced Concrete Pipe
- Ductile Iron
- Polyvinyl Chloride
- Top of Asphalt
- Edge of Asphalt
- Centerline
- Flowline
- Finish Floor
- Top of Curb
- Top of Wall
- Top of Walk
- Top of Concrete
- Natural Ground
- Finish Grade
- Fire Department Connection
- Finish Contour
- Exist. Contour
- Finish Grade
- Exist. Grade
- Ridge Line
- Direction of Flow
- Existing Asphalt
- New Asphalt
- Heavy Duty Asphalt
- Concrete
- Spill
- Curb & Gutter
- Demo Tree



West Quarter Corner of Section 15, T5N, R1W, SLB&M, U.S. Survey (Located from Subdivision plat)

N 89°49'34\" W plat (Indian Valley Estates, dated May 1984 Basis of Bearings)

Center of Section 15, T5N, R1W, SLB&M, U.S. Survey (Located from Subdivision plat)

RECEIVED
DEC 20 2012
By 004759

Found Ogdan City monument at intersection of Old Post Road and Shadow Valley Drive

NARRATIVE

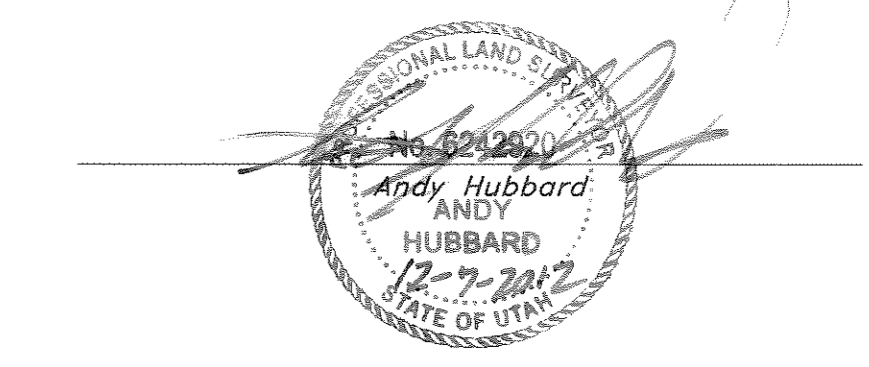
This property survey was requested by Mr. Aaron Spurlock for the purpose of determining location of existing occupation in relationship to the boundary lines. Ogdan City Centerline monuments were found along Old Post road at the intersections with Shadow Valley Drive, and Taylor Avenue, and at the Point of Curvature. A line bearing N 17°12' W between two Ogdan City Monuments at the intersections of Taylor Avenue and Shadow Valley Drive along Old Post Road was used as the basis of bearing. Nails were found in the curb at the extension of the lot lines between lots 7 & 8, 4 & 12 and 11 & 12, the location were checked and honored. Lot corners were monumented as depicted on drawing.

BOUNDARY DESCRIPTION

All of lot 7, Indian Valley Estates, Ogdan City, Weber County, Utah according to the official plat thereof on file in the Weber County Records office (Bk 26, Pg 37).

SURVEYOR'S CERTIFICATE

I, Andy Hubbard do hereby certify that I am a Registered Professional Land Surveyor, and that I hold Certificate No. 6242920, in accordance with Title 58, Chapter 22, of the Professional Engineers and Surveyors Licensing Act, and I have made a survey of the above described property according to Section 17-23-17 and that the above plat correctly shows the true dimensions of the property surveyed.



GREAT BASIN ENGINEERING
 5746 SOUTH 1475 EAST OGDEN, UTAH 84403
 MAIN (801)594-4515 B.L.C (801)521-0222 FAX (801)592-7544
 WWW.GREATBASINENGINEERING.COM

Property Survey
Spurlock Property Survey
 1427 Washakie Circle,
 Ogdan City, Weber County, Utah
 A part of Section 15, T5N, R1W, SLB&M, U.S. Survey

15 Nov, 2012
 SHEET NO.
C1
 12N766 - Spurlock