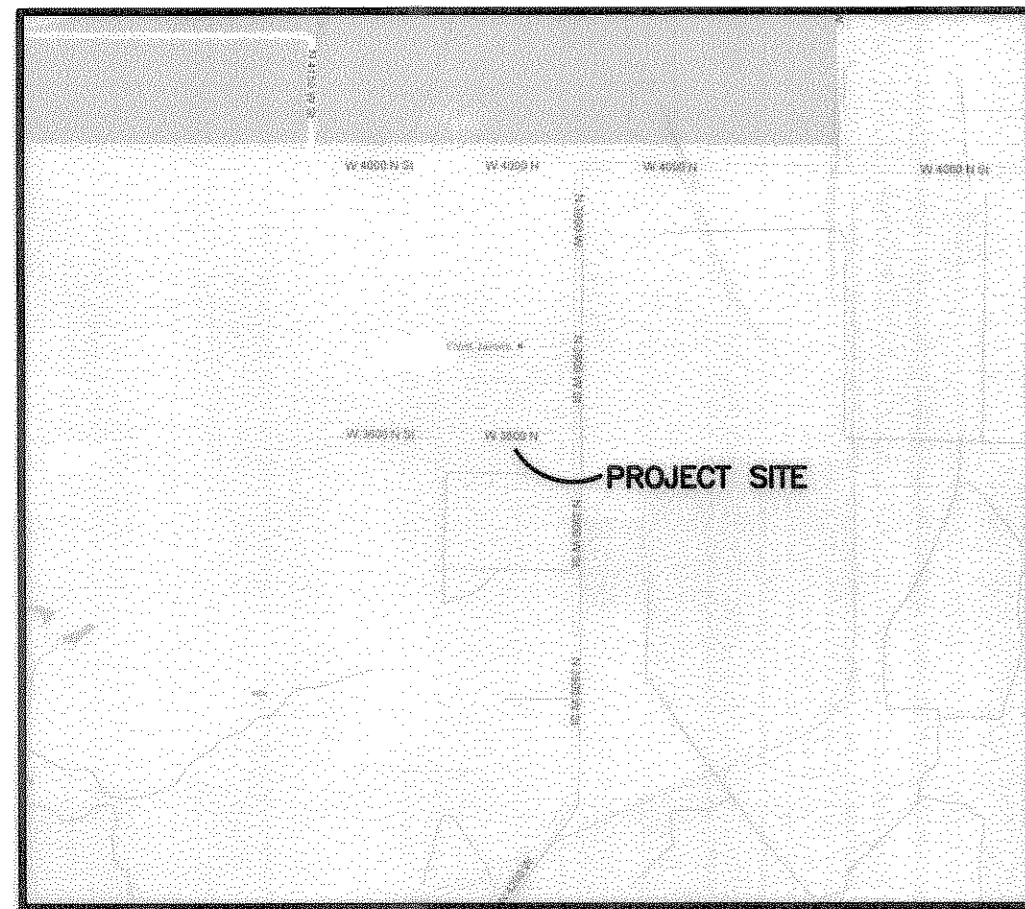


MAW ESTATES SUBDIVISION, 1ST AMENDMENT

PART OF THE SOUTHWEST QUARTER OF SECTION 21, TOWNSHIP 7 NORTH, RANGE 2 WEST, SALT LAKE BASE AND MERIDIAN, U.S. SURVEY
WEBER COUNTY, UTAH
JULY, 2013



VICINITY MAP
NO SCALE

LEGEND

- = SECTION CORNER
 - = SET 5/8" X 24" REBAR AND PLASTIC CAP STAMPED "REEVE & ASSOCIATES"
 - = FOUND REEVE & REEVE REBAR AND CAP
 - = CORNER AT EXISTING 4" METAL FENCE POST
 - = FIRE HYDRANT
 - = TEST HOLE
 - = BOUNDARY LINE
 - = LOT LINE
 - = ADJOINING PROPERTY
 - = EASEMENTS
 - = SECTION TIE LINE
 - = ROAD CENTERLINE
 - = EXISTING FENCELINE
 - = EXISTING BUILDING
 - = EXISTING PAVEMENT
 - = P.U.E. = PUBLIC UTILITY EASEMENT
- Scale: 1" = 40'

BASIS OF BEARINGS

THE BASIS OF BEARINGS FOR THIS PLAT IS THE SECTION LINE BETWEEN THE SOUTH QUARTER CORNER AND THE NORTH QUARTER CORNER OF SECTION 21, TOWNSHIP 7 NORTH, RANGE 2 WEST, SALT LAKE BASE AND MERIDIAN, U.S. SURVEY. SHOWN HEREON AS N00°50'50"E.

NARRATIVE

THE PURPOSE OF THIS PLAT IS TO CREATE AN AMENDED PLAT OF LOT 2 OF MAW ESTATES SUBDIVISION. ALL LOT CORNERS WERE SET WITH A 5/8" X 24" REBAR AND PLASTIC CAP STAMPED "REEVE & ASSOCIATES".

LEGAL DESCRIPTION

ALL OF LOT 2, MAW ESTATES SUBDIVISION, RECORDED IN THE WEBER COUNTY RECORDERS OFFICE.

TOTAL AREA: 5.00 ACRES.

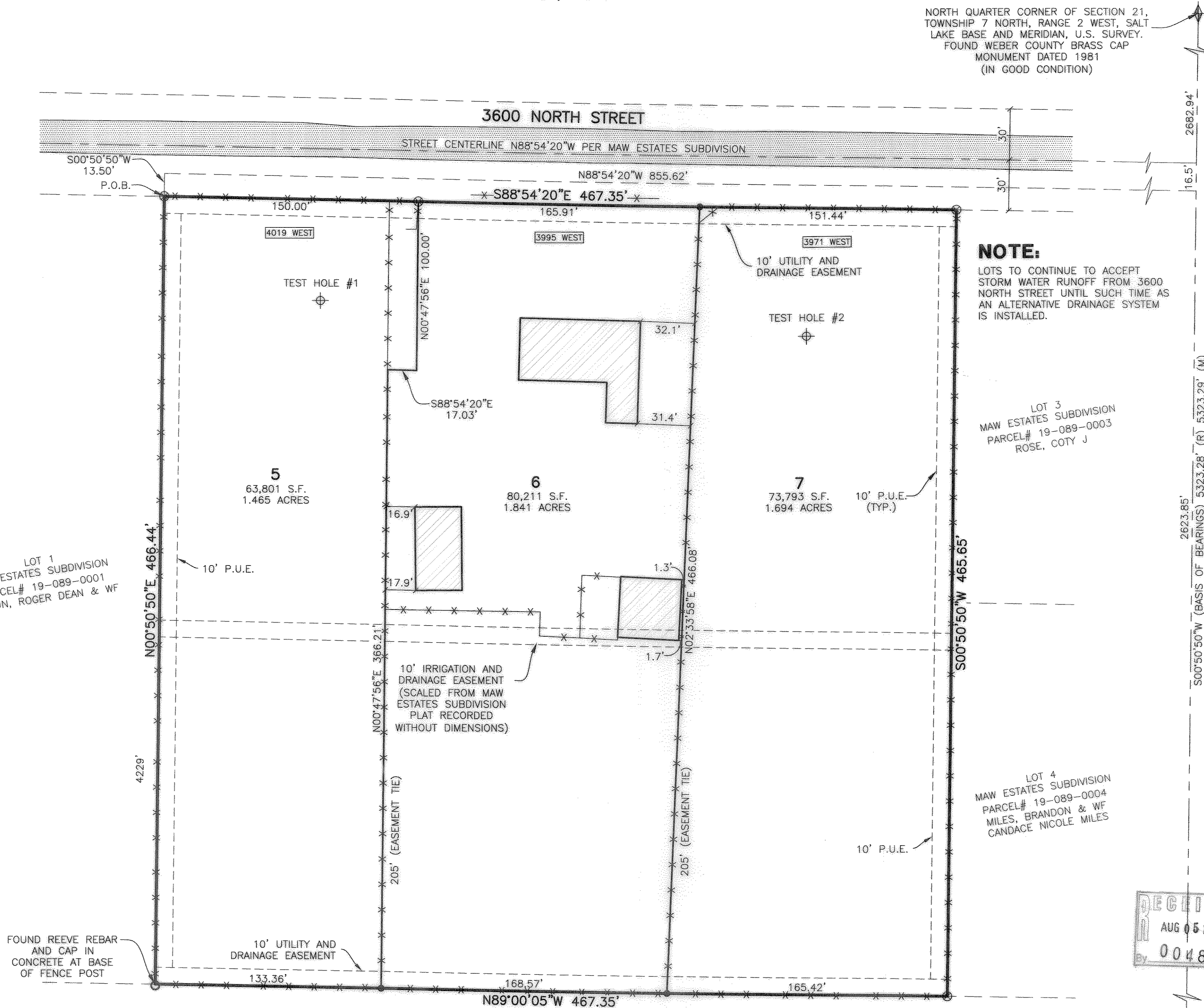
AGRICULTURAL STATEMENT

"AGRICULTURE IS THE PREFERRED USE IN THE AGRICULTURAL ZONES. AGRICULTURAL OPERATIONS AS SPECIFIED IN THE ZONING ORDINANCE FOR A PARTICULAR ZONE ARE PERMITTED AT ANY TIME INCLUDING THE OPERATION OF FARM MACHINERY AND NO ALLOWED AGRICULTURAL USE SHALL BE SUBJECT TO RESTRICTION ON THE BASIS THAT IT INTERFERES WITH ACTIVITIES OF FUTURE RESIDENTS OF THIS SUBDIVISION." (AMD. ORD. #3-82, JANUARY 26, 1982; ORD. #2002-3, MARCH 05, 2002)

DEVELOPER

KEN SUMMERS
3995 WEST 3600 NORTH
OGDEN, UTAH 84404

PARCEL# 19-089-0017
MILES, BRANDON & WF
CANDACE NICOLE MILES



NORTH QUARTER CORNER OF SECTION 21, TOWNSHIP 7 NORTH, RANGE 2 WEST, SALT LAKE BASE AND MERIDIAN, U.S. SURVEY. FOUND WEBER COUNTY BRASS CAP MONUMENT DATED 1981 (IN GOOD CONDITION)

SOUTH QUARTER CORNER OF SECTION 21, TOWNSHIP 7 NORTH, RANGE 2 WEST, SALT LAKE BASE AND MERIDIAN, U.S. SURVEY. FOUND WEBER COUNTY BRASS CAP MONUMENT DATED 1963 (IN GOOD CONDITION)

SURVEYOR'S CERTIFICATE

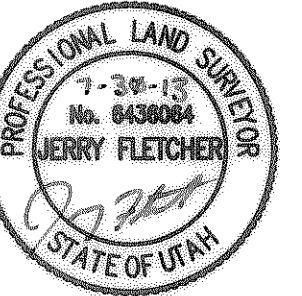
I, JERRY FLETCHER, DO HEREBY CERTIFY THAT I AM A REGISTERED PROFESSIONAL LAND SURVEYOR IN THE STATE OF UTAH IN ACCORDANCE WITH TITLE 58, CHAPTER 22, PROFESSIONAL ENGINEERS AND LAND SURVEYORS ACT; AND THAT I HAVE COMPLETED A SURVEY OF THE PROPERTY DESCRIBED ON THIS PLAT IN ACCORDANCE WITH SECTION 17-23-17 AND HAVE VERIFIED ALL MEASUREMENTS, AND HAVE PLACED MONUMENTS AS REPRESENTED ON THIS PLAT, AND THAT THIS PLAT OF MAW ESTATES SUBDIVISION, 1ST AMENDMENT IN WEBER COUNTY, UTAH, HAS BEEN DRAWN CORRECTLY TO THE DESIGNATED SCALE AND IS A TRUE AND CORRECT REPRESENTATION OF THE HEREIN DESCRIBED LANDS INCLUDED IN SAID SUBDIVISION, BASED UPON DATA COMPILED FROM RECORDS IN THE WEBER COUNTY RECORDERS OFFICE AND FROM SAID SURVEY MADE BY ME ON THE GROUND. I FURTHER CERTIFY THAT THE REQUIREMENTS OF ALL APPLICABLE STATUTES AND ORDINANCES OF WEBER COUNTY CONCERNING ZONING REQUIREMENTS REGARDING LOT MEASUREMENTS HAVE BEEN COMPLIED WITH.

SIGNED THIS 29th DAY OF July, 2013.

6436064

UTAH LICENSE NUMBER

JERRY FLETCHER



OWNERS DEDICATION AND CERTIFICATION

WE THE UNDERSIGNED OWNERS OF THE HEREIN DESCRIBED TRACT OF LAND, DO HEREBY SET APART AND SUBDIVIDE THE SAME INTO A THREE LOT SUBDIVISION AS SHOWN ON THE PLAT AND NAME SAID TRACT MAW ESTATES SUBDIVISION, 1ST AMENDMENT, AND DO HEREBY GRANT AND DEDICATE A PERPETUAL RIGHT AND EASEMENT OVER, UPON AND UNDER THE LANDS DESIGNATED HEREON AS PUBLIC UTILITY, STORM WATER DETENTION PONDS DRAINAGE EASEMENTS AND CANAL MAINTENANCE EASEMENT, THE SAME TO BE USED FOR THE INSTALLATION MAINTENANCE AND OPERATION OF PUBLIC UTILITY SERVICE LINE, STORM DRAINAGE FACILITIES, IRRIGATION CANALS OR FOR THE PERPETUAL PRESERVATION OF WATER CHANNELS IN THEIR NATURAL STATE WHICHEVER IS APPLICABLE AS MAY BE AUTHORIZED BY THE GOVERNING AUTHORITY, WITH NO BUILDINGS OR STRUCTURES BEING ERRECTED WITHIN SUCH EASEMENTS. ALSO GRANT AND DEDICATE A 10' IRRIGATION AND DRAINAGE EASEMENT, THE EASEMENT IS INTENDED TO COINCIDE WITH THE CENTRAL LINE OF THE EXISTING FACILITIES, FOR THE USE, MAINTENANCE, OPERATION, AND REPLACEMENT OF SAID FACILITIES.

SIGNED THIS _____ DAY OF _____, 20____.

KENNETH SUMMERS, TRUSTEE

JANICE SUMMERS, TRUSTEE

ACKNOWLEDGMENT

STATE OF UTAH)ss.
COUNTY OF _____)

ON THE _____ DAY OF _____, 20____, PERSONALLY APPEARED BEFORE ME, THE UNDERSIGNED NOTARY PUBLIC, _____ (AND) _____ SIGNER(S) OF THE ABOVE OWNER'S DEDICATION AND CERTIFICATION, WHO BEING BY ME DULY SWORN, DID ACKNOWLEDGE TO ME _____ SIGNED IT FREELY, VOLUNTARILY, AND FOR THE PURPOSES THEREIN MENTIONED.

COMMISSION EXPIRES _____

NOTARY PUBLIC _____

ACKNOWLEDGMENT

STATE OF UTAH)ss.
COUNTY OF _____)

ON THE _____ DAY OF _____, 20____, PERSONALLY APPEARED BEFORE ME, THE UNDERSIGNED NOTARY PUBLIC, _____ (AND) _____ BEING BY ME DULY SWORN, ACKNOWLEDGED TO ME THEY ARE _____ AND _____ OF SAID CORPORATION AND THAT THEY SIGNED THE ABOVE OWNER'S DEDICATION AND CERTIFICATION FREELY, VOLUNTARILY, AND IN BEHALF OF SAID CORPORATION FOR THE PURPOSES THEREIN MENTIONED.

COMMISSION EXPIRES _____

NOTARY PUBLIC _____

Project Info.

Surveyor: J. FLETCHER
Designer: N. ANDERSON
Begin Date: 04-08-13
Name: MAW ESTATES SUBD 1st AMENDMENT
Number: 6194-01
Revision: 07-22-13
Scale: 1"=40'
Checked: _____



WEBER COUNTY PLANNING COMMISSION APPROVAL

THIS IS TO CERTIFY THAT THIS SUBDIVISION PLAT WAS DULY APPROVED BY THE WEBER COUNTY PLANNING COMMISSION. SIGNED THIS _____ DAY OF _____, 20____.

CHAIRMAN, WEBER COUNTY PLANNING COMMISSION

WEBER COUNTY ENGINEER

I HEREBY CERTIFY THAT THE REQUIRED PUBLIC IMPROVEMENT STANDARDS AND DRAWINGS FOR THIS SUBDIVISION CONFORM WITH THE COUNTY STANDARDS AND THE AMOUNT OF THE FINANCIAL GUARANTEE IS SUFFICIENT FOR THE INSTALLATION OF THESE IMPROVEMENTS.

WEBER COUNTY ENGINEER

WEBER COUNTY COMMISSION ACCEPTANCE

THIS IS TO CERTIFY THAT THIS SUBDIVISION PLAT, THE DEDICATION OF STREETS AND OTHER PUBLIC WAYS AND FINANCIAL GUARANTEE OF PUBLIC IMPROVEMENTS ASSOCIATED WITH THIS SUBDIVISION, THEREON ARE HEREBY APPROVED AND ACCEPTED BY THE COMMISSIONERS OF WEBER COUNTY, UTAH. SIGNED THIS _____ DAY OF _____, 20____.

CHAIRMAN, WEBER COUNTY COMMISSION

ATTEST

WEBER COUNTY SURVEYOR

I HEREBY CERTIFY THAT THE WEBER COUNTY SURVEYOR'S OFFICE HAS REVIEWED THIS PLAT FOR MATHEMATICAL CORRECTNESS, SECTION CORNER DATA, AND FOR HARMONY WITH LINES AND MONUMENTS ON RECORD IN COUNTY OFFICES. THE APPROVAL OF THIS PLAT BY THE WEBER COUNTY SURVEYOR DOES NOT RELIEVE THE LICENSED LAND SURVEYOR WHO EXECUTED THIS PLAT FROM THE RESPONSIBILITIES AND/OR LIABILITIES ASSOCIATED THEREWITH. SIGNED THIS _____ DAY OF _____, 20____.

WEBER COUNTY SURVEYOR

WEBER COUNTY ATTORNEY

I HAVE EXAMINED THE FINANCIAL GUARANTEE AND OTHER DOCUMENTS ASSOCIATED WITH THIS SUBDIVISION PLAT, AND IN MY OPINION THEY CONFORM WITH THE COUNTY ORDINANCE APPLICABLE THERETO AND NOW IN FORCE AND AFFECT. SIGNED THIS _____ DAY OF _____, 20____.

WEBER COUNTY ATTORNEY

WEBER-MORGAN HEALTH DEPARTMENT

I HEREBY CERTIFY THAT THE SOILS, PERCOLATION RATES, AND SITE CONDITIONS FOR THIS SUBDIVISION HAVE BEEN INVESTIGATED BY THIS OFFICE AND ARE APPROVED FOR ON-SITE WASTEWATER DISPOSAL SYSTEMS. SIGNED THIS _____ DAY OF _____, 20____.

WEBER-MORGAN HEALTH DEPARTMENT

Webber County Recorder

Entry No. _____ Fee Paid _____
Filed For Record _____
And Recorded, _____
At _____ In Book _____
Of The Official Records, Page _____
Recorded For: _____

Webber County Recorder _____ Deputy.