

**BOUNDARY DESCRIPTION**  
 A part of the Southeast Quarter of Section 18, Township 5 North, Range 2 West, Salt Lake Base & Meridian, U.S. Survey:  
 Beginning at a point 198.60 feet North 00°39'40" East along the Section line and 613.63 feet North 89°20'20" West from the Southeast corner of said Southeast Quarter; and running thence North 89°21'45" West 746.93 feet to an Existing fence line; thence North 00°42'48" East 303.82 feet along said Fence line to the Southeast corner of Fowers Subdivision No. 3, in Weber County, Utah; thence North 00°13'10" East 301.21 feet along the East line of said Subdivision to the South right of way line of 5500 South Street; thence South 89°26'10" East 625.08 feet along said South right of way line to an Existing fence line; thence two (2) courses along said fence line as follows: South 00°52'02" West 169.23 feet to a fence corner and South 89°19'47" East 124.58 feet; thence South 00°40'13" West 436.52 feet to the point of beginning.  
 Contains 9.91 acres.

**EXCEPTIONS TO COVERAGE**

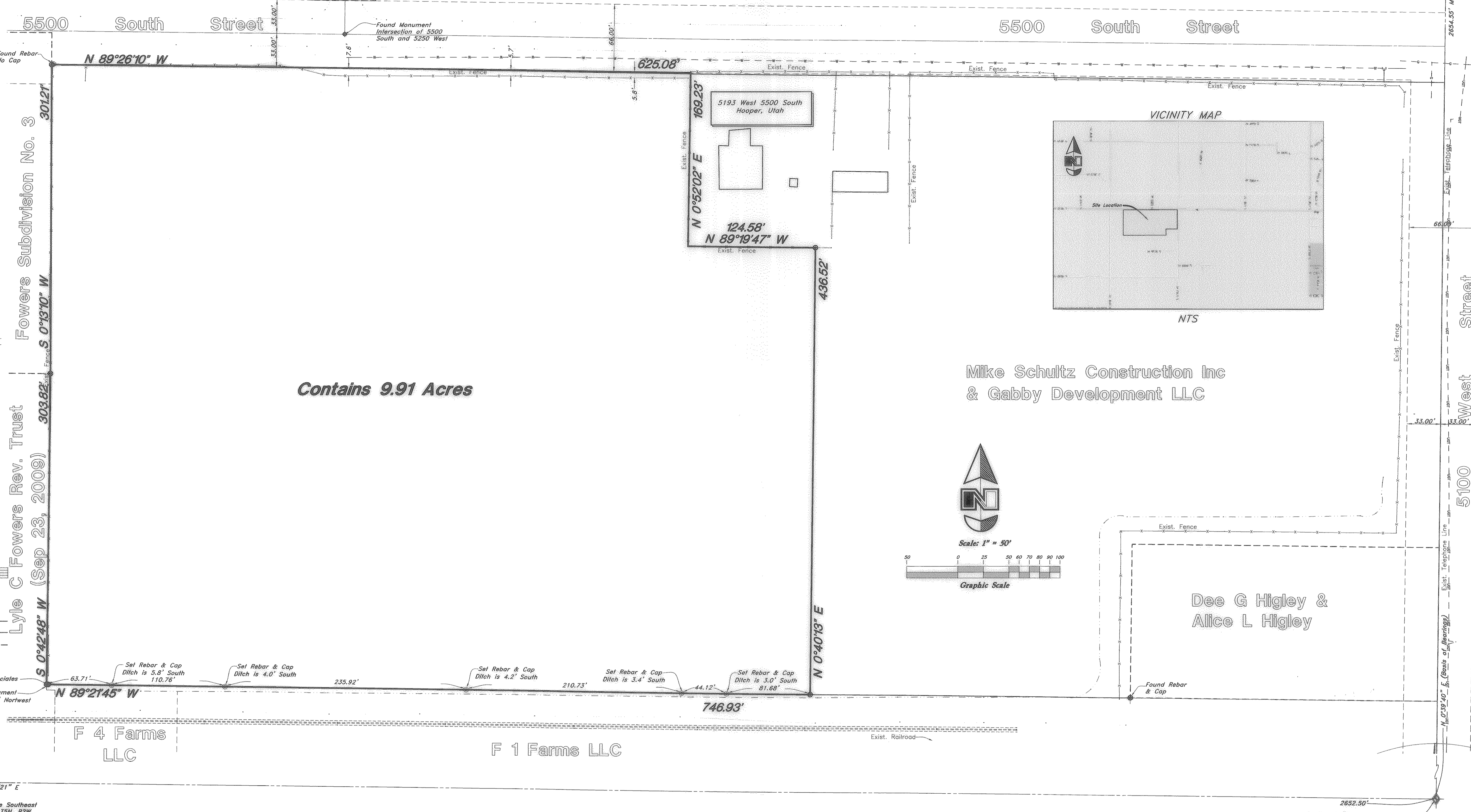
**Exception No. 9:**  
 Any charge upon the land by reason of its inclusion in Hooper Water Improvement and Hooper City.  
**Exception No. 10:**  
 An Ordinance No. 2005-13 Setting Forth Requirements of Developers and New Owners or Builders Regarding Pressure Irrigation recorded June 30, 2006 as Entry No. 2190793 of Official Records.

Northeast Corner of the Southeast Quarter of Section 18, T5N, R2W, SLB&M, U.S. Survey, (Found Brass Cap Monument)

**Legend**

(Note: All items may not appear on drawing)

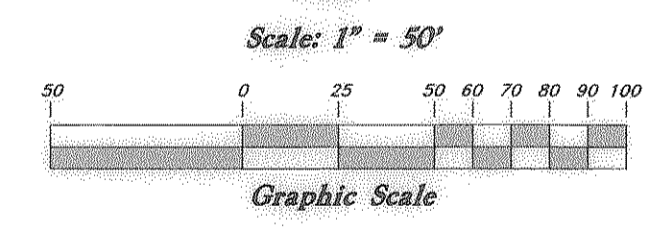
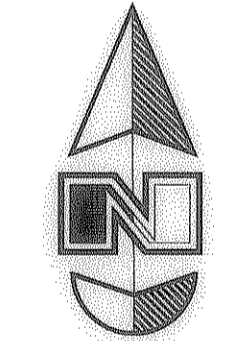
- San. Sewer Manhole
- Water Manhole
- Storm Drain Manhole
- Electrical Manhole
- Catch Basins
- Exist. Fire Hydrant
- Fire Hydrant
- Exist. Water Valve
- Water Valve
- Sanitary Sewer
- Culinary Water
- Gas Line
- Irrigation Line
- Storm Drain
- Telephone Line
- Secondary Waterline
- Power Line
- Fire Line
- Land Drain
- Power pole
- Power pole w/guy
- Light Pole
- Fence
- Flowline of ditch
- Overhead Power line
- Corrugated Metal Pipe
- Concrete Pipe
- Reinforced Concrete Pipe
- Ductile Iron
- Polyvinyl Chloride
- Top of Asphalt
- Edge of Asphalt
- Centerline
- Flowline
- Finish Floor
- Top of Curb
- Top of Wall
- Top of Walk
- Top of Concrete
- Natural Ground
- Finish Grade
- Fire Department Connection
- Finish Contour
- Exist. Contour
- Finish Grade
- Exist. Grade
- Ridge Line
- Direction of Flow
- Existing Asphalt
- New Asphalt
- Heavy Duty Asphalt
- Concrete
- Open Face
- Curb & Gutter
- Demo Tree
- Subdivision Extension
- Exist. Railroad
- Rotated Railroad



**Contains 9.91 Acres**

**Mike Schultz Construction Inc & Gabby Development LLC**

**Dee G Higley & Alice L Higley**



**ZONING**

This property is located in R1 Low Density Residential, per Zoning Map. (Information Provided by Hooper City at <http://hoopercity.com/pdf/Hooper%20Zoning%20Map%202012-10.pdf>)

**FLOOD ZONE DESIGNATION**

This property lies entirely within Flood Zone X as designated on FEMA Flood Insurance Rate Map for Salt Lake County, Utah and Incorporated Areas Map Number 49035C0280E dated 21 September, 2001. Flood Zone X is defined as "Areas determined to be outside the 0.2% annual chance floodplain." (no shading)

**NOTES**

1. There is no evidence of wetland areas on or near the site.
2. There is evidence of recent building construction and grading.
3. There are no observed evidence of use of site as a solid waste dump, sump or sanitary landfill.
4. Utilities shown are from observed evidence on the site and from Record Documents provided to the surveyor.

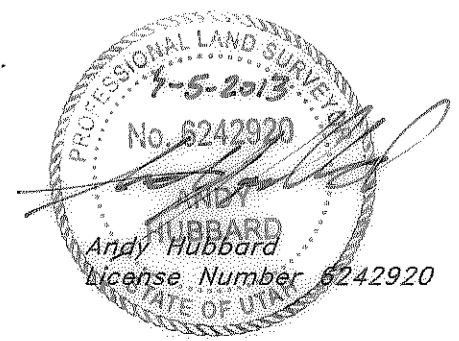
**CERTIFICATION**

To Weber State University, Mike Schultz Construction, Inc, Gabby Development LLC and First American Title Company, LLC

The ALTA/ACSM survey will meet the "Minimum Standard Detail Requirements for ALTA/ACSM Land Surveys" jointly established and adopted by ALTA,ACSM, and NSPS in 2011, shall meet the accuracy requirements of an urban survey, and shall include Optional Table "A" items 1, 2, 3, 4, 5 (High and Low Points around the perimeter only), 6(a), 8, 11(b), 12, 13, 15, 16, 18, 19, 20(a), 20(b), & 21.

The field work was completed on October 19, 2012.

Date of Plat or Map: xxx, 7-5-2013



**NARRATIVE**  
 This ALTA/ACSM Land Title Survey was requested by Mr. Richard Sirken in preparation for the purchase of this parcel.  
 Brass Cap Monuments were found at the Northeast and Southeast corner of the Southeast 1/4, Section 18, T5N, R2W, SLB&M U.S. Survey.  
 A line bearing North 0°39'40" East between the Southeast and Northeast corners was used as the basis of bearings.  
 A centerline monument was found at the Intersection of 5250 West and 5500 South Streets. Its location was checked against the location shown on the Lewis Estates, subdivision plat (Weber County Recorder Bk 22, Pg 92,) and found to be accurate. The bearings were rotated 0°33'50" counterclockwise to match the section line bearing.  
 A rebar and Reeve & Associates Cap was found near the Southwest corner of the property, its location was not found to monument any property line or corner position, and nothing was on file in the County Surveyor's Office to relate the position.  
 A Benchmark Monument was found in the Northeast corner of the Intersection of 5100 West and 5500 South Streets.  
 Three Hooper Water Improvement District Monuments were found in the Concrete collars around Water Valve locations, as shown on this drawing.  
 Property corners were monumented as depicted on this drawing.

**GREAT BASIN ENGINEERING**  
 5746 SOUTH 1475 EAST OGDEN, UTAH 84403  
 MAIN (801)399-4451 S.L.C. (801)521-0222 FAX (801)399-27544  
 WWW.GREATBASINENGINEERING.COM

**ALTA Survey**  
**WSU Hooper Property**  
 5193 West 5500 South  
 Hooper City, Weber County, Utah  
 A part of Section 18, T5N, R2W, SLB&M, U.S. Survey