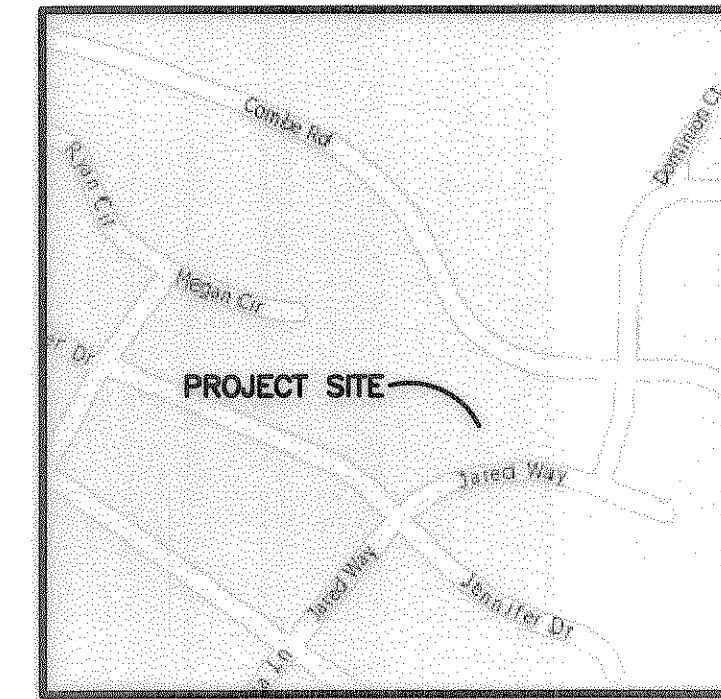
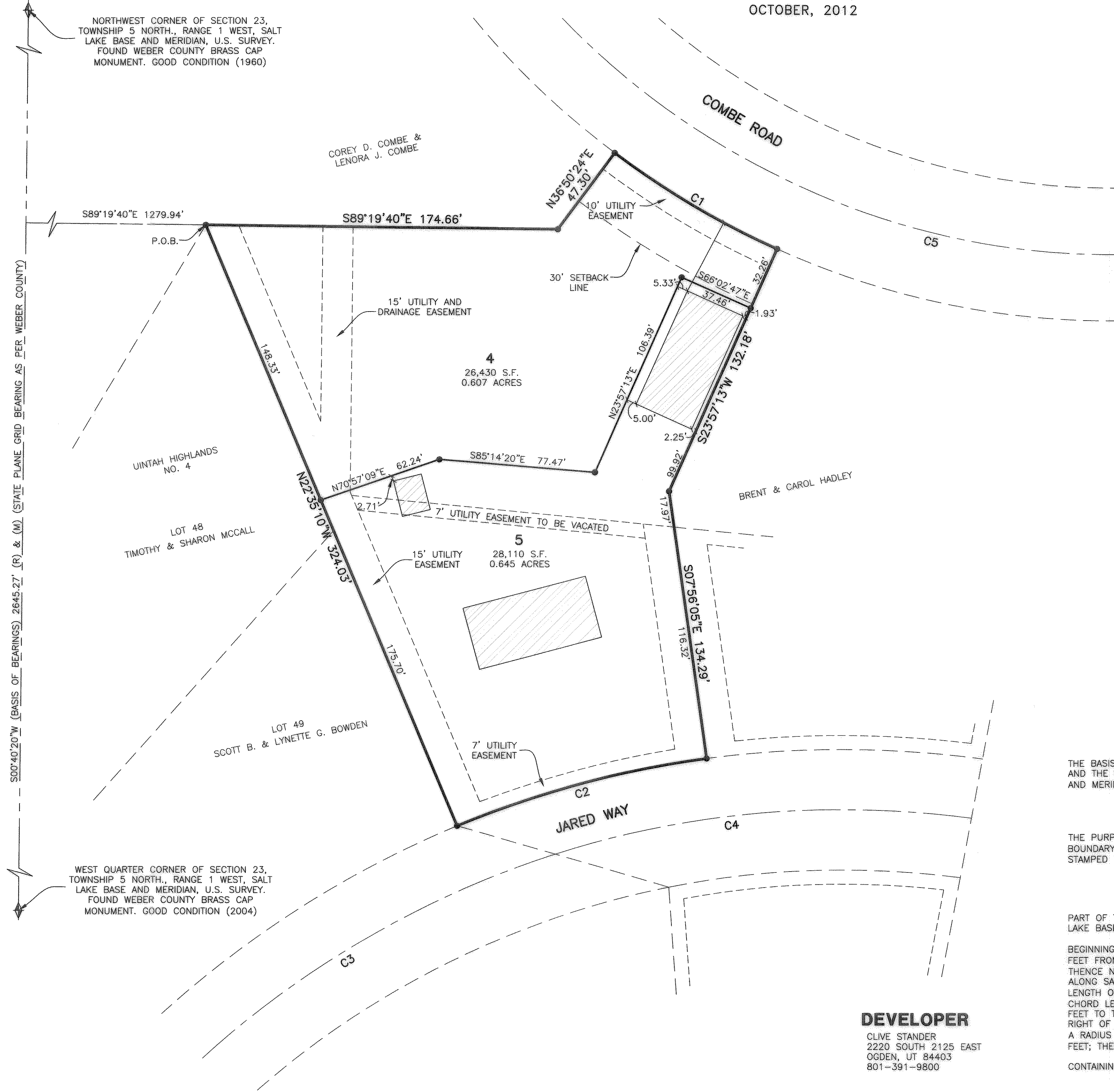


COMBE SOUTH ESTATES SUBDIVISION NO. 1 2ND AMENDMENT

PART OF THE NORTHWEST QUARTER OF SECTION 23, TOWNSHIP 5 NORTH, RANGE 1 WEST, SALT LAKE BASE AND MERIDIAN, U.S. SURVEY.

WEBER COUNTY, UTAH
OCTOBER, 2012

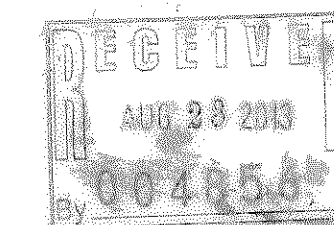
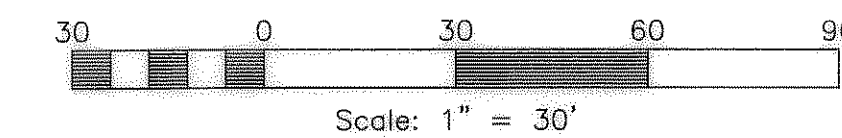
NORTHWEST CORNER OF SECTION 23, TOWNSHIP 5 NORTH, RANGE 1 WEST, SALT LAKE BASE AND MERIDIAN, U.S. SURVEY. FOUND WEBER COUNTY BRASS CAP MONUMENT. GOOD CONDITION (1960)



VICINITY MAP
NOT TO SCALE

LEGEND

- = SECTION CORNER
- = SET STREET MONUMENT
- = SET 5/8" REBAR 24" LONG AND PLASTIC CAP STAMPED "REEVE & ASSOCIATES"
- = SET LEAD PLUG IN TOP BACK OF CURB
- = BOUNDARY LINE
- = LOT LINE
- = ADJOINING PROPERTY
- = EASEMENTS
- = SECTION TIE LINE
- = ROAD CENTERLINE
- = EXISTING BUILDING



BASIS OF BEARINGS

THE BASIS OF BEARINGS FOR THIS PLAT IS THE SECTION LINE BETWEEN THE WEST QUARTER CORNER AND THE NORTHWEST CORNER OF SECTION 23, TOWNSHIP 5 NORTH, RANGE 1 WEST, SALT LAKE BASE AND MERIDIAN, U.S. SURVEY. SHOWN HEREON AS S00°40'20"W.

NARRATIVE

THE PURPOSE OF THIS PLAT IS TO DIVIDE THE PROPERTY INTO A TWO LOT SUBDIVISION. ALL BOUNDARY CORNERS AND LOT CORNERS WERE SET WITH A 5/8" REBAR 24" LONG AND PLASTIC CAP STAMPED "REEVE & ASSOCIATES".

BOUNDARY DESCRIPTION

PART OF THE NORTHWEST QUARTER OF SECTION 23, TOWNSHIP 5 NORTH, RANGE 1 WEST, SALT LAKE BASE AND MERIDIAN, U.S. SURVEY. DESCRIBED AS FOLLOWS:

BEGINNING AT A POINT, SAID POINT BEING S00°40'20"W 1322.62 FEET AND S89°19'40"E 1279.94 FEET FROM THE NORTHWEST CORNER OF SAID SECTION 23; THENCE S89°19'40"E 174.66 FEET; THENCE N36°50'24"E 47.30 FEET TO THE SOUTHERLY RIGHT OF WAY LINE OF COMBE ROAD; THENCE ALONG SAID SOUTHERLY RIGHT OF WAY LINE ALONG A CURVE TURNING TO THE LEFT WITH AN ARC LENGTH OF 93.63 FEET, A RADIUS OF 413.00 FEET, A CHORD BEARING OF S59°32'14"E, AND A CHORD LENGTH OF 93.43 FEET; THENCE S23°57'13"W 132.18 FEET; THENCE S07°56'05"E 134.29 FEET TO THE NORTHERLY RIGHT OF WAY LINE OF JARED WAY; THENCE ALONG SAID NORTHERLY RIGHT OF WAY LINE ALONG A CURVE TURNING TO THE LEFT WITH AN ARC LENGTH OF 128.84 FEET, A RADIUS OF 503.86 FEET, A CHORD BEARING OF S74°44'33"W, AND A CHORD LENGTH OF 128.49 FEET; THENCE N22°35'10"W 324.03 FEET TO THE POINT OF BEGINNING.

CONTAINING 54,540 SQUARE FEET OR 1.252 ACRES

DEVELOPER

CLIVE STANDER
2220 SOUTH 2125 EAST
OGDEN, UT 84403
801-391-9800

Surveyor's Certificate

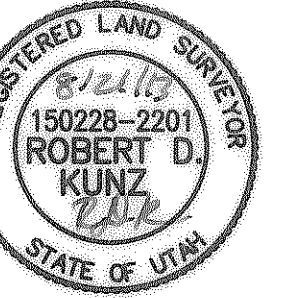
I, ROBERT D. KUNZ, DO HEREBY CERTIFY THAT I AM A REGISTERED PROFESSIONAL LAND SURVEYOR IN THE STATE OF UTAH IN ACCORDANCE WITH TITLE 58, CHAPTER 22, PROFESSIONAL ENGINEERS AND LAND SURVEYORS ACT; AND THAT I HAVE COMPLETED A SURVEY OF THE PROPERTY DESCRIBED ON THIS PLAT IN ACCORDANCE WITH SECTION 17-23-17 AND HAVE VERIFIED ALL MEASUREMENTS, AND HAVE PLACED MONUMENTS AS REPRESENTED ON THIS PLAT, AND THAT THIS PLAT OF COMBE SOUTH ESTATES SUBDIVISION NO. 1 2ND AMENDMENT IN WEBER COUNTY, UTAH, HAS BEEN DRAWN CORRECTLY TO THE DESIGNATED SCALE AND IS A TRUE AND CORRECT REPRESENTATION OF THE HEREIN DESCRIBED LANDS INCLUDED IN SAID SUBDIVISION, BASED UPON DATA COMPILED FROM RECORDS IN THE WEBER COUNTY RECORDER'S OFFICE AND FROM SAID SURVEY MADE BY ME ON THE GROUND. I FURTHER CERTIFY THAT THE REQUIREMENTS OF ALL APPLICABLE STATUTES AND ORDINANCES OF WEBER COUNTY CONCERNING ZONING REQUIREMENTS REGARDING LOT MEASUREMENTS HAVE BEEN COMPLIED WITH.

SIGNED THIS 21 DAY OF August, 2012.

150228-2201

UTAH LICENSE NUMBER

ROBERT D. KUNZ



Owners Dedication And Certification

WE THE UNDERSIGNED OWNERS OF THE HEREIN DESCRIBED TRACT OF LAND, DO HEREBY SET APART AND SUBDIVIDE THE SAME INTO LOTS AND STREETS AS SHOWN ON THE PLAT AND NAME SAID TRACT COMBE SOUTH ESTATES SUBDIVISION NO. 1 2ND AMENDMENT, AND DO HEREBY GRANT AND DEDICATE A PERPETUAL RIGHT AND EASEMENT OVER, UPON AND UNDER THE LANDS DESIGNATED HEREON AS PUBLIC UTILITY, STORM WATER DETENTION PONDS, SEWER EASEMENTS, DRAINAGE EASEMENTS AND CANAL MAINTENANCE EASEMENT, THE SAME TO BE USED FOR THE INSTALLATION MAINTENANCE AND OPERATION OF PUBLIC UTILITY SERVICE LINE, STORM DRAINAGE FACILITIES, IRRIGATION CANALS OR FOR THE PERPETUAL PRESERVATION OF WATER CHANNELS IN THEIR NATURAL STATE WHICHEVER IS APPLICABLE AS MAY BE AUTHORIZED BY THE GOVERNING AUTHORITY, WITH NO BUILDINGS OR STRUCTURES BEING ERRECTED WITHIN SUCH EASEMENTS.

SIGNED THIS _____ DAY OF _____, 20____.

THE CLIVE AND LINDA STANDER TRUST

CLIVE T. STANDER, TRUSTEE

LINDA STANDER, TRUSTEE

CURVE TABLE

#	RADIUS	ARC LENGTH	CHD LENGTH	TANGENT	CHD BEARING	DELTA
C1	413.00'	93.63'	93.43'	47.02'	S59°32'14"E	12°59'22"
C2	503.86'	128.84'	128.49'	64.77'	S74°44'33"W	14°39'03"
C3	473.86'	203.98'	202.41'	103.59'	S59°52'36"W	24°39'50"
C4	473.86'	209.17'	207.47'	106.31'	S84°51'29"W	25°17'27"
C5	380.00'	488.60'	455.63'	284.64'	S53°30'20"E	73°40'13"

Acknowledgment

LENORA J. COMBE, TRUSTEE

STATE OF UTAH } ss.
COUNTY OF _____

ON THE _____ DAY OF _____, 20____, PERSONALLY APPEARED BEFORE ME, THE UNDERSIGNED NOTARY PUBLIC, (AND) _____ BEING BY ME DULY SWORN, ACKNOWLEDGED TO ME THEY ARE THE TRUSTEES OF SAID TRUST AND THAT THEY SIGNED THE ABOVE OWNER'S DEDICATION AND CERTIFICATION FREELY, VOLUNTARILY, AND IN BEHALF OF SAID TRUSTEES FOR THE PURPOSES THEREIN MENTIONED.

COMMISSION EXPIRES _____

NOTARY PUBLIC

Project Info.

Surveyor: R. KUNZ
Designer: N. ANDERSON
Begin Date: 09-20-07
Name: COMBE SOUTH ESTATES SUBD NO. 1 2ND AMD
Number: 6129-01
Revision: 03-13-13
Scale: 1"=30'
Checked: _____



WEBER COUNTY PLANNING COMMISSION APPROVAL

THIS IS TO CERTIFY THAT THIS SUBDIVISION PLAT WAS DULY APPROVED BY THE WEBER COUNTY PLANNING COMMISSION. SIGNED THIS _____ DAY OF _____, 20____.

CHAIRMAN, WEBER COUNTY PLANNING COMMISSION

WEBER COUNTY ENGINEER

I HEREBY CERTIFY THAT THE REQUIRED PUBLIC IMPROVEMENT STANDARDS AND DRAWINGS FOR THIS SUBDIVISION CONFORM WITH THE COUNTY STANDARDS AND THE AMOUNT OF THE FINANCIAL GUARANTEE IS SUFFICIENT FOR THE INSTALLATION OF THESE IMPROVEMENTS.

WEBER COUNTY ENGINEER

WEBER COUNTY COMMISSION ACCEPTANCE

THIS IS TO CERTIFY THAT THIS SUBDIVISION PLAT, THE DEDICATION OF STREETS AND OTHER PUBLIC WAYS AND FINANCIAL GUARANTEE OF PUBLIC IMPROVEMENTS ASSOCIATED WITH THIS SUBDIVISION, THEREON ARE HEREBY APPROVED AND ACCEPTED BY THE COMMISSIONERS OF WEBER COUNTY, UTAH. SIGNED THIS _____ DAY OF _____, 20____.

CHAIRMAN, WEBER COUNTY COMMISSION

ATTEST

WEBER COUNTY SURVEYOR

I HEREBY CERTIFY THAT THE WEBER COUNTY SURVEYOR'S OFFICE HAS REVIEWED THIS PLAT FOR MATHEMATICAL CORRECTNESS, SECTION CORNER DATA, AND FOR HARMONY WITH LINES AND MONUMENTS ON RECORD IN COUNTY OFFICES. THE APPROVAL OF THIS PLAT BY THE WEBER COUNTY SURVEYOR DOES NOT RELIEVE THE LICENSED LAND SURVEYOR WHO EXECUTED THIS PLAT FROM THE RESPONSIBILITIES AND/OR LIABILITIES ASSOCIATED THEREWITH. SIGNED THIS _____ DAY OF _____, 20____.

WEBER COUNTY SURVEYOR

WEBER COUNTY ATTORNEY

I HAVE EXAMINED THE FINANCIAL GUARANTEE AND OTHER DOCUMENTS ASSOCIATED WITH THIS SUBDIVISION PLAT, AND IN MY OPINION THEY CONFORM WITH THE COUNTY ORDINANCE APPLICABLE THERETO AND NOW IN FORCE AND EFFECT. SIGNED THIS _____ DAY OF _____, 20____.

WEBER COUNTY ATTORNEY

WEBER-MORGAN HEALTH DEPARTMENT

I HEREBY CERTIFY THAT THE SOILS, PERCOLATION RATES, AND SITE CONDITIONS FOR THIS SUBDIVISION HAVE BEEN INVESTIGATED BY THIS OFFICE AND ARE APPROVED FOR ON-SITE WASTEWATER DISPOSAL SYSTEMS. SIGNED THIS _____ DAY OF _____, 20____.

WEBER-MORGAN HEALTH DEPARTMENT

Webber County Recorder

Entry No. _____ Fee Paid _____
And Recorded, _____
At _____ In Book _____
Of The Official Records, Page _____
Recorded For: _____
Weber County Recorder _____
Deputy: _____