

DRAWING NUMBER
000486

PLAN HOLD CORPORATION • IRVINE, CALIFORNIA
REORDER BY NUMBER 075AR
POSITION EDGE OF PRINT ON THIS LINE

DRAWING NUMBER
000486

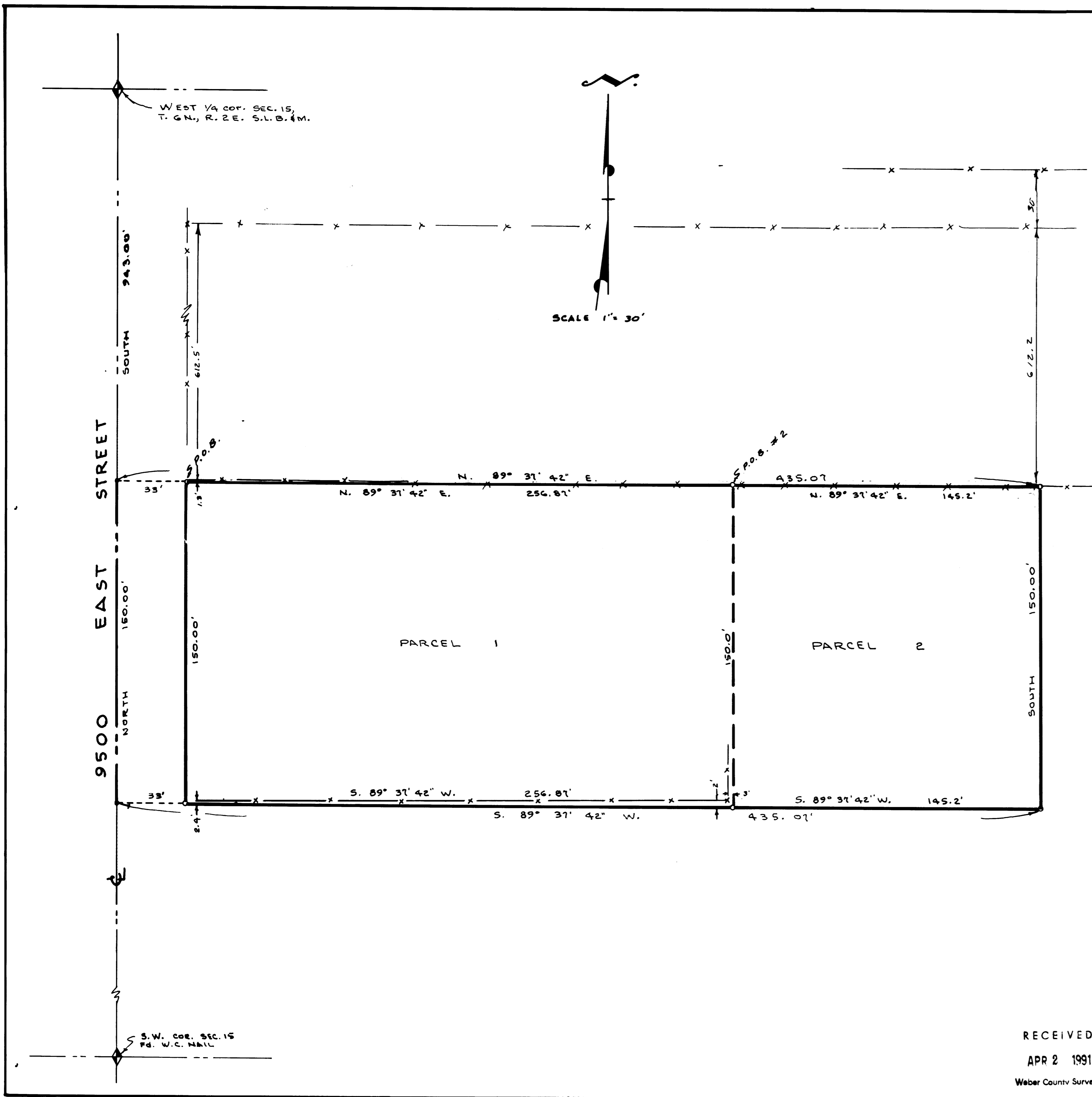
PLAN HOLD CORPORATION • IRVINE, CALIFORNIA
REORDER BY NUMBER 075AR
POSITION EDGE OF PRINT ON THIS LINE

DRAWING NUMBER
000486

PLAN HOLD CORPORATION • IRVINE, CALIFORNIA
REORDER BY NUMBER 075AR
POSITION EDGE OF PRINT ON THIS LINE

DRAWING NUMBER
000486

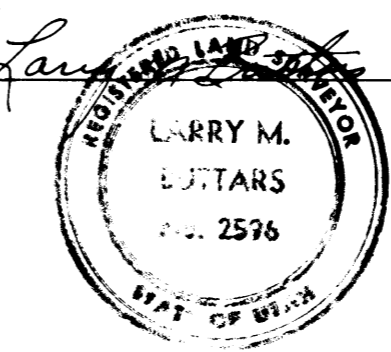
PLAN HOLD CORPORATION • IRVINE, CALIFORNIA
REORDER BY NUMBER 075AR
POSITION EDGE OF PRINT ON THIS LINE



SURVEYORS CEPTIFICATE

I, Larry M. Buttars, a registered Land Surveyor as prescribed by the laws of the State of Utah and holding License No. 2596, do hereby certify that I made a survey of the herein described property and the Plat hereon is a true and correct representation of said survey.

Date: 12-10-90 Sign: *Larry M. Buttars*



DESCRIPTION

PARCEL 1:
Part of the S.W. 1/4 of Sec. 15, T. 6 N., R. 2 E., S. 1 B. & M., U.S. Survey: Beginning at a point on the East line of County Road South 943 ft. along the section line (N. 89° 31' 42" E. 33 ft. from the West 1/4 corner of said section 15, and running thence N. 89° 31' 42" E. 256.87 ft., thence South 150.0 ft., thence S. 89° 31' 42" W. 256.87 ft., thence North 150.0 ft. to the point of beginning.

PARCEL 2:
Part of the S.W. 1/4 of Section 15, T. 6 N., R. 2 E., S. 1 B. & M., U.S. Survey: Beginning at a point South 943.0 ft. and N. 89° 31' 42" E. 209.87 ft. from the West 1/4 corner of said Section 15, and running thence N. 89° 31' 42" E. 145.2 ft., thence South 150.0 ft., thence S. 89° 31' 42" W. 145.2 ft., thence North 150.0 ft., to the point of beginning.

NARRATIVE

The purpose of this survey was to establish prop. corners for sale of property and to set corners and describe an additional 1/2 acre.
Basis of bearings: due South along the West line of Sec. 15, using this as bearing base the East-West bearings runs along existing fences and the bearing N. 89° 31' 42" E. established for South Fork Ranchette Subdiv.

LEGEND

- Set 3/4" x 24" re-bar with plastic cap; stamped L. Buttars, R.L.S. 2596.
- Set P.K. with ribbon

BUTTARS SURVEYING	
1815 26 TH STREET	OGDEN, UT. 84401
PHONE 392-5291	
CLIENT: CRAIG FROGH - U.S. TITLE	
SURVEY LOCATION:	
S.W. 1/4 SEC. 15, T. 6 N., R. 2 E., S. 1 B. & M.	
HUNTSVILLE, WEBER COUNTY	
SURVEY DATE: 11-29-90 & 12-7-90	

RECEIVED
APR 2 1991
Weber County Surveyor