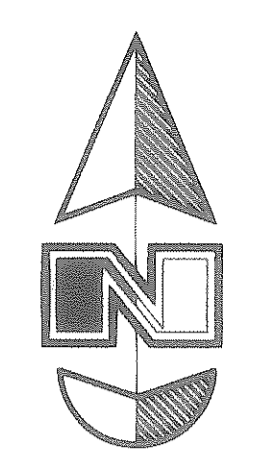
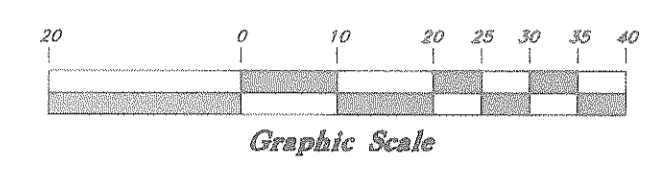


N 89°44'50" E (Basis of Bearings)
N 89°44'50" E

North 1/4 corner of Section
13, T6N, R1E, SLB&M
(Found USDA Brass Cap
Monument in Grassy Area
0.1' below grade in good
condition)



Scale: 1" = 20'



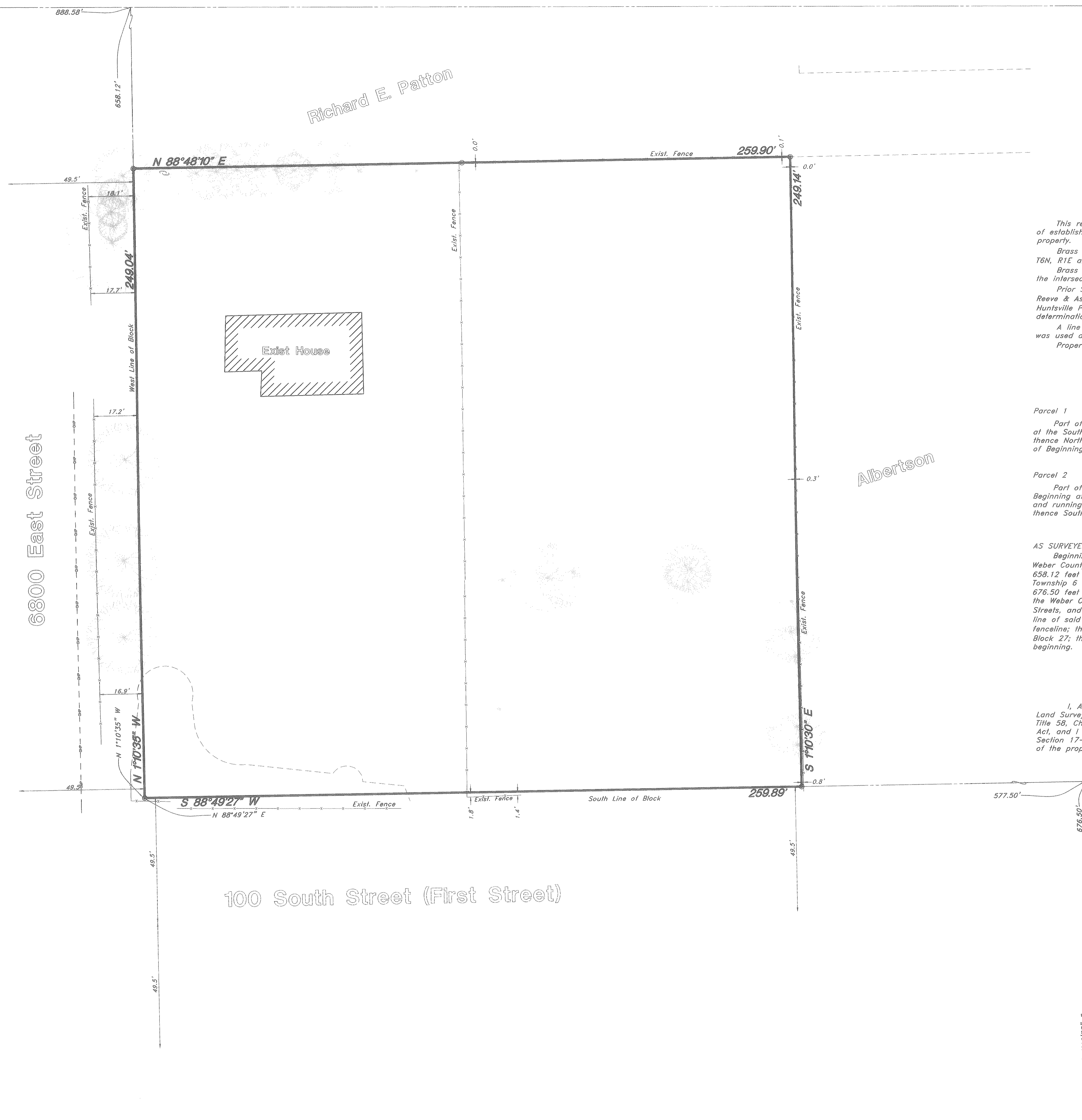
Legend
(Note: All items may not appear on drawing)

- San Sewer Manhole
- Water Manhole
- Storm Drain Manhole
- Electrical Manhole
- Catch Basins
- Exist. Fire Hydrant
- Fire Hydrant
- Exist. Water Valve
- Water Valve
- Sanitary Sewer
- Culinary Water
- Gas Line
- Irrigation Line
- Storm Drain
- Telephone Line
- Secondary Waterline
- Power Line
- Fire Line
- Land Drain
- Power pole
- Power pole w/guy
- Light Pole
- Fence
- Flowline of ditch
- Overhead Power line
- Corrugated Metal Pipe
- Concrete Pipe
- Reinforced Concrete Pipe
- Ductile Iron
- Polyvinyl Chloride
- Top of Asphalt
- Edge of Asphalt
- Centerline
- Flowline
- Finish Floor
- Top of Curb
- Top of Wall
- Top of Walk
- Top of Concrete
- Natural Ground
- Finish Grade
- Fire Department Connection
- Finish Contour
- Exist. Contour
- Finish Grade
- Exist. Grade
- Ridge Line
- Direction of Flow
- Existing Asphalt
- New Asphalt
- Heavy Duty Asphalt
- Concrete
- Open Face
- Curb & Gutter
- Tree

5208.39' Meas. (5208.45' W.C.S.)

North 1/4 corner of Section
18, T6N, R2E, SLB&M
(Found 3" Weber County
Brass Cap Monument in
West of Fence line below
grade, in good condition)

Richard E. Patton



NARRATIVE

This record of Survey was requested by Mr. Matt Crowley for the purpose of establishing the boundaries of the parcel and to locate all the trees on the property.
Brass Cap monuments were found at the North 1/4 corner of Section 13, T6N, R1E and the North 1/4 corner of Section 18, T6N, R2E, SLB&M.
Brass Cap Monuments in Ring and Lids were found along 200 South at the intersections of 6900 East and 7000 East.
Prior Surveys by the Weber County Surveyor (3457 uncompleted), and Reeve & Associates (2419 Dated 14th February 2000), and the original Huntsville Plat A, (5-77 Dated June 1910) were used in the preparation and determination of this survey.
A line bearing North 88°44'50" East between the two North 1/4 corners was used as the basis of bearings.
Property corners were monumented as depicted on this drawing.

BOUNDARY DESCRIPTIONS

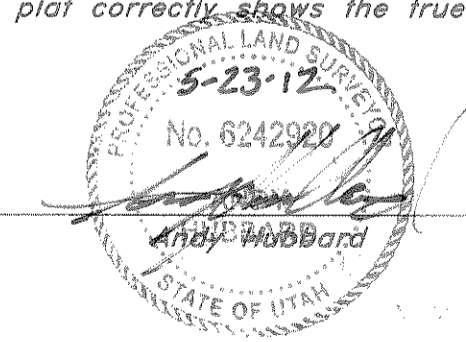
Parcel 1
Part of Block 27, Plat A, Huntsville Survey, Weber County, Utah. Beginning at the Southwest Corner of said Block and running thence East 8 Rods, thence North 15 Rods, thence West 8 Rods, thence South 15 Rods, to the Place of Beginning.
Containing 3/4 Of An Acre, M/L.

Parcel 2
Part of Block 27, Plat A, Huntsville Survey, Weber County, Utah: Beginning at a Point 8 Rods East From the Southwest corner of said Block, and running thence East 8 Rods, thence North 15 Rods, thence West 8 Rods, thence South 15 Rods to the Place of Beginning.
Containing 3/4 Of An Acre, M/L.

AS SURVEYED BOUNDARY
Beginning at the Southwest corner of Block 27, Plat A, Huntsville Survey, Weber County Utah, said point being 888.58 feet North 89°44'50" East, and 658.12 feet South 1°10'35" East from the North Quarter corner of Section 13, Township 6 North, Range 1 East, Salt Lake Base & Meridian, said point is also 676.50 feet North 1°10'35" West and 577.50 feet South 89°49'27" West from the Weber County Monument at the intersection of 200 South & 6900 East Streets, and running thence North 1°10'35" West 249.04 feet along the West line of said Block 27; thence North 88°48'10" East 259.90 feet to an existing fence; thence South 1°10'30" East 249.14 feet to the South line of said Block 27; thence South 88°49'27" West along said South line to the Point of beginning.
Contains 1.48 Acres

SURVEYOR'S CERTIFICATE

I, Andy Hubbard do hereby certify that I am a Registered Professional Land Surveyor, and that I hold Certificate No. 6242920, in accordance with Title 58, Chapter 22, of the Professional Engineers and Surveyors Licensing Act, and I have made a survey of the above described property according to Section 17-23-17 and that the above plat correctly shows the true dimensions of the property surveyed.



Intersection of 200 South & 6900 East Street (Found Brass Cap Monument in ring and Lid below asphalt in good condition)
Intersection of 200 South & 7000 East Street (Found Brass Cap Monument in ring and Lid below asphalt in good condition)

REV.	DATE	DESCRIPTION

GREAT BASIN ENGINEERING
5746 SOUTH 1475 EAST OGDEN, UTAH 84403
MAIN (801)394-4515 S.L.C.(801)521-0222 FAX (801)392-7544
WWW.GREATBASINENGINEERING.COM

Record of Survey
Crowley Occupation
100 South 6800 East Street
Huntsville, Weber County, Utah
A part of Section 13, T6N, R1E, SLB&M, U.S. Survey