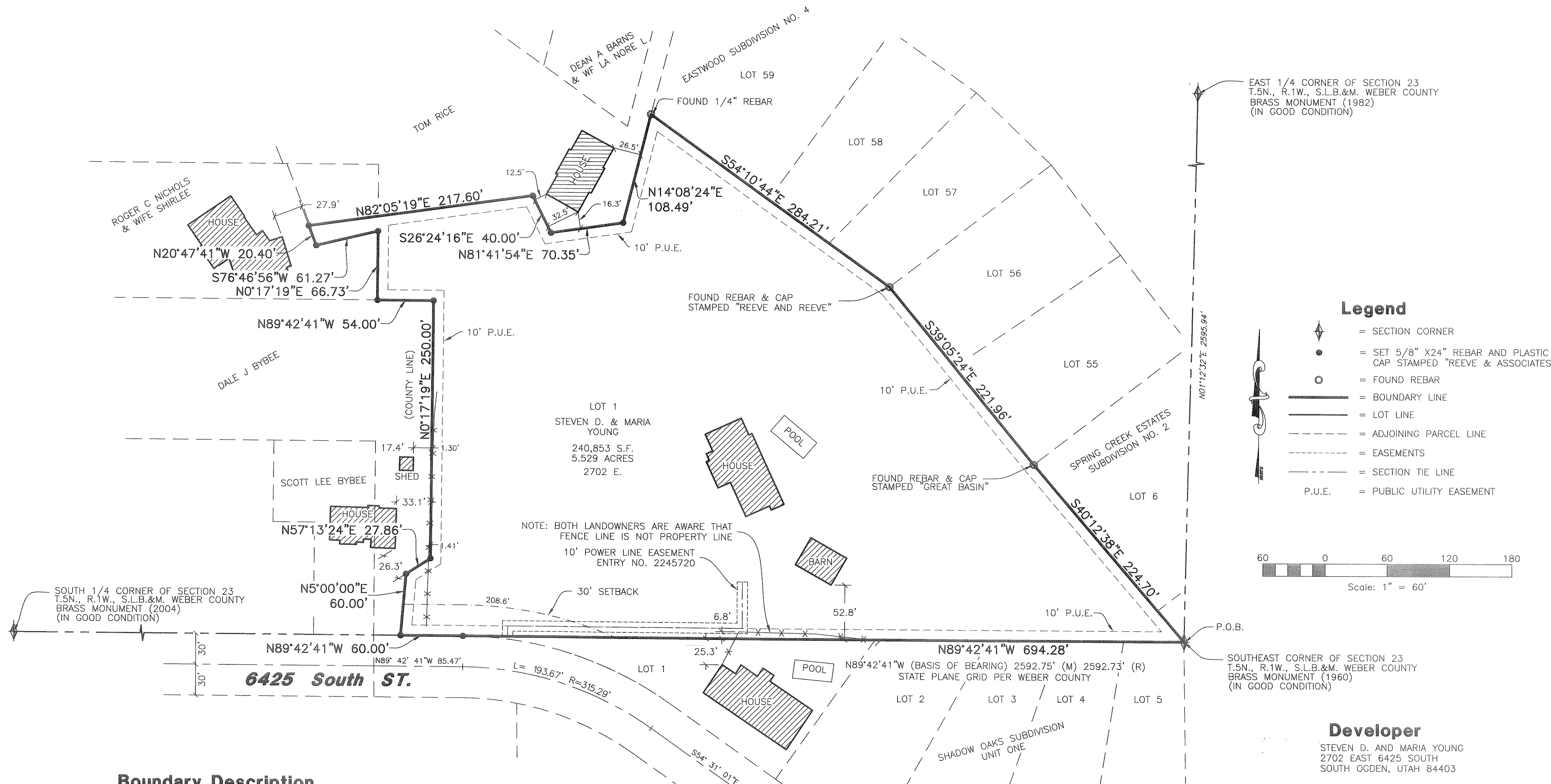


S & M Estates Subdivision

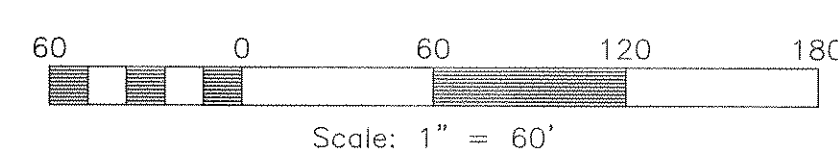
PART OF THE SOUTHEAST QUARTER OF SECTION 23, T.5N., R.1W., S.L.B.&M., U.S. SURVEY
WEBER COUNTY, UTAH



EAST 1/4 CORNER OF SECTION 23
T.5N., R.1W., S.L.B.&M. WEBER COUNTY
BRASS MONUMENT (1982)
(IN GOOD CONDITION)

SOUTHEAST CORNER OF SECTION 23
T.5N., R.1W., S.L.B.&M. WEBER COUNTY
BRASS MONUMENT (1960)
(IN GOOD CONDITION)

- ### Legend
- = SECTION CORNER
 - = SET 5/8" X24" REBAR AND PLASTIC CAP STAMPED "REEVE & ASSOCIATES"
 - = FOUND REBAR
 - = BOUNDARY LINE
 - = LOT LINE
 - = ADJOINING PARCEL LINE
 - = EASEMENTS
 - = SECTION TIE LINE
 - = PUBLIC UTILITY EASEMENT



Boundary Description

A PART OF THE SOUTHEAST QUARTER OF SECTION 23, T.5N., R.1W., S.L.B.&M., U.S. SURVEY, DESCRIBED AS FOLLOWS:

BEGINNING AT THE SOUTHEAST CORNER OF SECTION 23, T.5N., R.1W., S.L.B.&M., THENCE ALONG THE SOUTH SECTION LINE OF SAID SECTION 23, N89°42'41"W 694.28 FEET TO THE NORTHWEST CORNER OF LOT 1, SHADOW OAKS SUBDIVISION UNIT ONE; THENCE ALONG THE NORTH LINE OF 6425 SOUTH STREET, AND SECTION LINE, N89°42'41"W 60.00 FEET; THENCE LEAVING SAID LINE, N05°00'00"E 60.00 FEET; THENCE N57°13'24"E 27.86 FEET; THENCE N00°17'19"E 250.00 FEET; THENCE N89°42'41"W 54.00 FEET; THENCE N00°17'19"E 66.73 FEET; THENCE S76°46'56"W 61.27 FEET; THENCE N20°47'41"W 20.40 FEET; THENCE N82°05'19"E 217.60 FEET; THENCE S26°24'16"E 40.00 FEET; THENCE N81°41'54"E 70.35 FEET; THENCE N14°08'24"E 108.49 FEET TO A FOUND REBAR MARKING THE SOUTHWEST CORNER OF LOT 59, EASTWOOD SUBDIVISION NO. 4; THENCE ALONG THE WESTERLY LINE OF SAID EASTWOOD SUBDIVISION NO. 4 THE FOLLOWING TWO (2) COURSES; (1) THENCE S54°10'44"E 284.21 FEET; (2) THENCE S39°05'24"E 221.96 FEET TO A FOUND REBAR MARKING THE SOUTHWEST CORNER OF LOT 55, EASTWOOD SUBDIVISION NO. 4 AND THE NORTHWEST CORNER OF LOT 6, SPRING CREEK ESTATES SUBDIVISION NO. 2; THENCE ALONG THE WESTERLY LINE OF SAID SPRING CREEK ESTATES SUBDIVISION NO. 2, S40°12'38"E 224.70 FEET TO THE POINT OF BEGINNING.

CONTAINING 240,853 SQUARE FEET, OR 5.529 ACRES.

Basis of Bearings

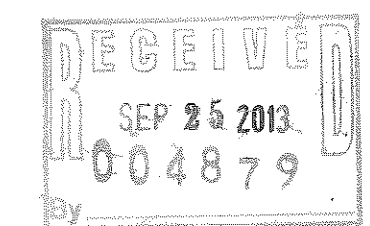
THE BASIS OF BEARINGS FOR THIS PLAT DETERMINED LOCALLY BY THE SECTION LINE BETWEEN THE SOUTHEAST CORNER AND THE SOUTH 1/4 CORNER OF SECTION 23, T.5N., R.1W., S.L.B.&M., U.S. SURVEY. SHOWN HEREON AS N89°42'41"W

Narrative

THE PURPOSE OF THIS PLAT IS TO ESTABLISH A ONE LOT SUBDIVISION. ACCESS TO PROPERTY IS FROM 6425 SOUTH STREET. ALL BOUNDARY CORNERS WERE SET WITH A 3/4" X 24" REBAR AND PLASTIC CAP STAMPED "REEVE & ASSOCIATES". THE 01°05'16" ANGLE DIFFERENCE BETWEEN THE TWO BEARINGS ALONG EASTWOOD NO. 4 AND THE DEDICATED PLAT IN ADDITION TO THE LENGTH DIFFERENCES ARE CONTROLLING FACTORS DERIVED FROM EVIDENCE (FOUND REBAR) ON THE GROUND.

Reference Plats

- EASTWOOD SUBDIVISION NO. 4, RECORDED NOVEMBER 5, 1968 IN BOOK 16 OF PLATS AT PAGE 12, IN THE WEBER COUNTY RECORDER'S OFFICE.
- SHADOW OAKS SUBDIVISION UNIT ONE, RECORDED FEBRUARY 15, 1978 IN BOOK 21 OF PLATS AT PAGE 24, IN THE WEBER COUNTY RECORDER'S OFFICE.
- SPRING CREEK ESTATES SUBDIVISION NO. 2, RECORDED SEPTEMBER 12, 1988 IN BOOK 30 OF PLATS AT PAGE 88, IN THE WEBER COUNTY RECORDER'S OFFICE.
- SURVEY NO. 002060, RECORD OF SURVEY FOR CANDANT MOBILITY SERVICE, FILED SEPTEMBER 29, 1998 IN THE WEBER COUNTY SURVEYOR'S OFFICE.
- SURVEY NO. 003363, RECORD OF SURVEY FOR LEE BYBEE, DATED OCTOBER 21, 2004 IN THE WEBER COUNTY SURVEYOR'S OFFICE.



Surveyor's Certificate

I, JERRY FLETCHER, DO HEREBY CERTIFY THAT I AM A REGISTERED PROFESSIONAL LAND SURVEYOR IN THE STATE OF UTAH IN ACCORDANCE WITH TITLE 58, CHAPTER 22, PROFESSIONAL ENGINEERS AND LAND SURVEYORS ACT; AND THAT I HAVE COMPLETED A SURVEY OF THE PROPERTY DESCRIBED ON THIS PLAT IN ACCORDANCE WITH SECTION 17-23-17 AND HAVE VERIFIED ALL MEASUREMENTS, AND HAVE PLACED MONUMENTS AS REPRESENTED ON THIS PLAT, AND THAT THIS PLAT OF S & M ESTATES SUBDIVISION IN WEBER COUNTY, UTAH, HAS BEEN DRAWN CORRECTLY TO THE DESIGNATED SCALE AND IS A TRUE AND CORRECT REPRESENTATION OF THE HEREIN DESCRIBED LANDS INCLUDED IN SAID SUBDIVISION, BASED UPON DATA COMPILED FROM RECORDS IN THE WEBER COUNTY RECORDER'S OFFICE AND FROM SAID SURVEY MADE BY ME ON THE GROUND, I FURTHER CERTIFY THAT THE REQUIREMENTS OF ALL APPLICABLE STATUTES AND ORDINANCES OF WEBER COUNTY CONCERNING ZONING REQUIREMENTS REGARDING LOT MEASUREMENTS HAVE BEEN COMPLIED WITH.

SIGNED THIS 25th DAY OF SEPTEMBER, 2013.

6438064
UTAH LICENSE NUMBER

Jerry Fletcher
JERRY FLETCHER

Owners Dedication And Certification

WE THE UNDERSIGNED OWNERS OF THE HEREIN DESCRIBED TRACT OF LAND, DO HEREBY SET APART AND SUBDIVIDE THE SAME INTO A LOT AS SHOWN ON THE PLAT AND NAME SAID TRACT, S & M ESTATES SUBDIVISION, AND DO HEREBY GRANT AND DEDICATE A PERPETUAL RIGHT AND EASEMENT OVER, UPON AND UNDER THE LANDS DESIGNATED HEREON AS PUBLIC UTILITY AND DRAINAGE EASEMENTS, THE SAME TO BE USED FOR THE INSTALLATION MAINTENANCE AND OPERATION OF PUBLIC UTILITY SERVICE LINE, AND STORM DRAINAGE FACILITIES, WHICHEVER IS APPLICABLE AS MAY BE AUTHORIZED BY THE GOVERNING AUTHORITY, WITH NO BUILDINGS OR STRUCTURES BEING ERECTED WITHIN SUCH EASEMENTS.

SIGNED THIS 25 DAY OF Sept, 2013

Steven D. Young
STEVEN D. YOUNG

Maria Young
MARIA YOUNG

Acknowledgment

STATE OF UTAH) ss.
COUNTY OF Webster)

ON THE 25th DAY OF September, 2013, PERSONALLY APPEARED BEFORE ME, THE UNDERSIGNED NOTARY PUBLIC, Steven D. Young (AND) Maria Young SIGNER(S) OF THE ABOVE OWNER'S DEDICATION AND CERTIFICATION, WHO BEING BY ME DULY SWORN, DID ACKNOWLEDGE TO ME HE SIGNED IT FREELY, VOLUNTARILY, AND FOR THE PURPOSES THEREIN MENTIONED.

10-12-2014
COMMISSION EXPIRES

Notary Public

Acknowledgment

STATE OF UTAH) ss.
COUNTY OF _____)

ON THE _____ DAY OF _____, 20____, PERSONALLY APPEARED BEFORE ME, THE UNDERSIGNED NOTARY PUBLIC, _____ (AND) _____ SIGNER(S) OF THE ABOVE OWNER'S DEDICATION AND CERTIFICATION, WHO BEING BY ME DULY SWORN, DID ACKNOWLEDGE TO ME _____ SIGNED IT FREELY, VOLUNTARILY, AND FOR THE PURPOSES THEREIN MENTIONED.

COMMISSION EXPIRES _____ NOTARY PUBLIC _____

Project Info.

Surveyor: J. FLETCHER
Designer: J. FLETCHER
Date: MAY 30, 2013
Name: S & M ESTATES SUBDIVISION
Number: 6208-01
Revision: 08-22-13
Scale: 1"=60'
Checked: _____

Weber County Planning Commission Approval

THIS IS TO CERTIFY THAT THIS SUBDIVISION PLAT WAS DULY APPROVED BY THE WEBER COUNTY PLANNING COMMISSION. SIGNED THIS _____ DAY OF _____, 20____.

CHAIRMAN, WEBER COUNTY PLANNING COMMISSION

Weber County Engineer

I HEREBY CERTIFY THAT THE REQUIRED PUBLIC IMPROVEMENT STANDARDS AND DRAWINGS FOR THIS SUBDIVISION CONFORM WITH THE COUNTY STANDARDS AND THE AMOUNT OF THE FINANCIAL GUARANTEE IS SUFFICIENT FOR THE INSTALLATION OF THESE IMPROVEMENTS.

WEBER COUNTY ENGINEER

Weber County Commission Acceptance

THIS IS TO CERTIFY THAT THIS SUBDIVISION PLAT, THE DEDICATION OF STREETS AND OTHER PUBLIC WAYS AND FINANCIAL GUARANTEE OF PUBLIC IMPROVEMENTS ASSOCIATED WITH THIS SUBDIVISION, THEREON ARE HEREBY APPROVED AND ACCEPTED BY THE COMMISSIONERS OF WEBER COUNTY, UTAH.

SIGNED THIS _____ DAY OF _____, 20____.

CHAIRMAN, WEBER COUNTY COMMISSION

ATTEST

Weber County Surveyor

I HEREBY CERTIFY THAT THE WEBER COUNTY SURVEYOR'S OFFICE HAS REVIEWED THIS PLAT FOR MATHEMATICAL CORRECTNESS, SECTION CORNER DATA, AND FOR HARMONY WITH LINES AND MONUMENTS ON RECORD IN COUNTY OFFICES. THE APPROVAL OF THIS PLAT BY THE WEBER COUNTY SURVEYOR DOES NOT RELIEVE THE LICENSED LAND SURVEYOR WHO EXECUTED THIS PLAT FROM THE RESPONSIBILITIES AND/OR LIABILITIES ASSOCIATED THEREWITH.

SIGNED THIS _____ DAY OF _____, 20____.

WEBER COUNTY SURVEYOR

Weber County Attorney

I HAVE EXAMINED THE FINANCIAL GUARANTEE AND OTHER DOCUMENTS ASSOCIATED WITH THIS SUBDIVISION PLAT, AND IN MY OPINION THEY CONFORM WITH THE COUNTY ORDINANCE APPLICABLE THERETO AND NOW IN FORCE AND EFFECT.

SIGNED THIS _____ DAY OF _____, 20____.

WEBER COUNTY ATTORNEY

WEBER-MORGAN HEALTH DEPARTMENT

I HEREBY CERTIFY THAT THE SOILS, PERCOLATION RATES, AND SITE CONDITIONS FOR THIS SUBDIVISION HAVE BEEN INVESTIGATED BY THIS OFFICE AND ARE APPROVED FOR ON-SITE WASTEWATER DISPOSAL SYSTEMS.

SIGNED THIS _____ DAY OF _____, 20____.

WEBER-MORGAN HEALTH DEPARTMENT

Weber County Recorder

Entry No. _____ Fee Paid _____
Filed For Record _____
And Recorded, _____
At _____ In Book _____
Of The Official Records, Page _____
Recorded For: _____
Weber County Recorder _____
Deputy: _____