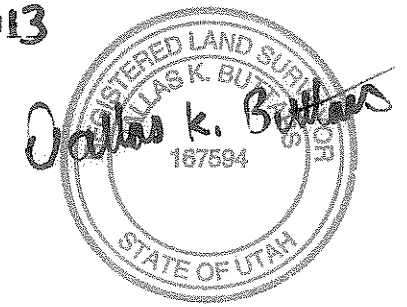


SURVEYOR'S CERTIFICATE

I, DALLAS K. BUTTARS, HOLDING LICENSE NUMBER 167594 IN ACCORDANCE WITH TITLE 58, CHAPTER 22, PROFESSIONAL ENGINEERS AND LAND SURVEYORS LICENSING ACT, HAVE COMPLETED A SURVEY OF THE PROPERTY DESCRIBED ON THE PLAT IN ACCORDANCE WITH SECTION 17-23-17 AND HAVE VERIFIED ALL MEASUREMENTS AND PLACED MONUMENTS AS REPRESENTED ON THE PLAT.

SIGNED THIS 11th DAY OF Dec 2013



BOUNDARY DESCRIPTION

Garth Allen to Darrell Allen (A)
Part of the Southeast quarter of section 17, Township 6 North, Range 2 East, Salt Lake base and Meridian; beginning at a point North 89°44'17" East 999.90 feet along the quarter section line, North 0°19'01" East 732.60 feet, (North 732.60') South 89°40'59" West 396.00 feet (West 396.00') North 4°16'59" West 937.00 feet (N4°36'W); South 88°34'59" West 140.90 feet (S 88°54' E.); and North 1°16'05" East 203.67 feet from the South quarter corner of said section 17 and running thence North 4°16'59" West 122.58 feet to the center of street; thence South 88°34'59" East 11.86 feet along center of street (S.88°54'E.); thence South 1°16'05" West 121.98 feet to the point of beginning, contains 727 sq. ft.

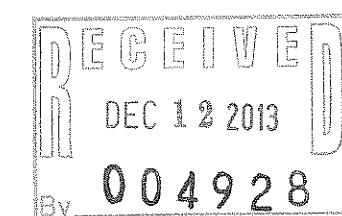
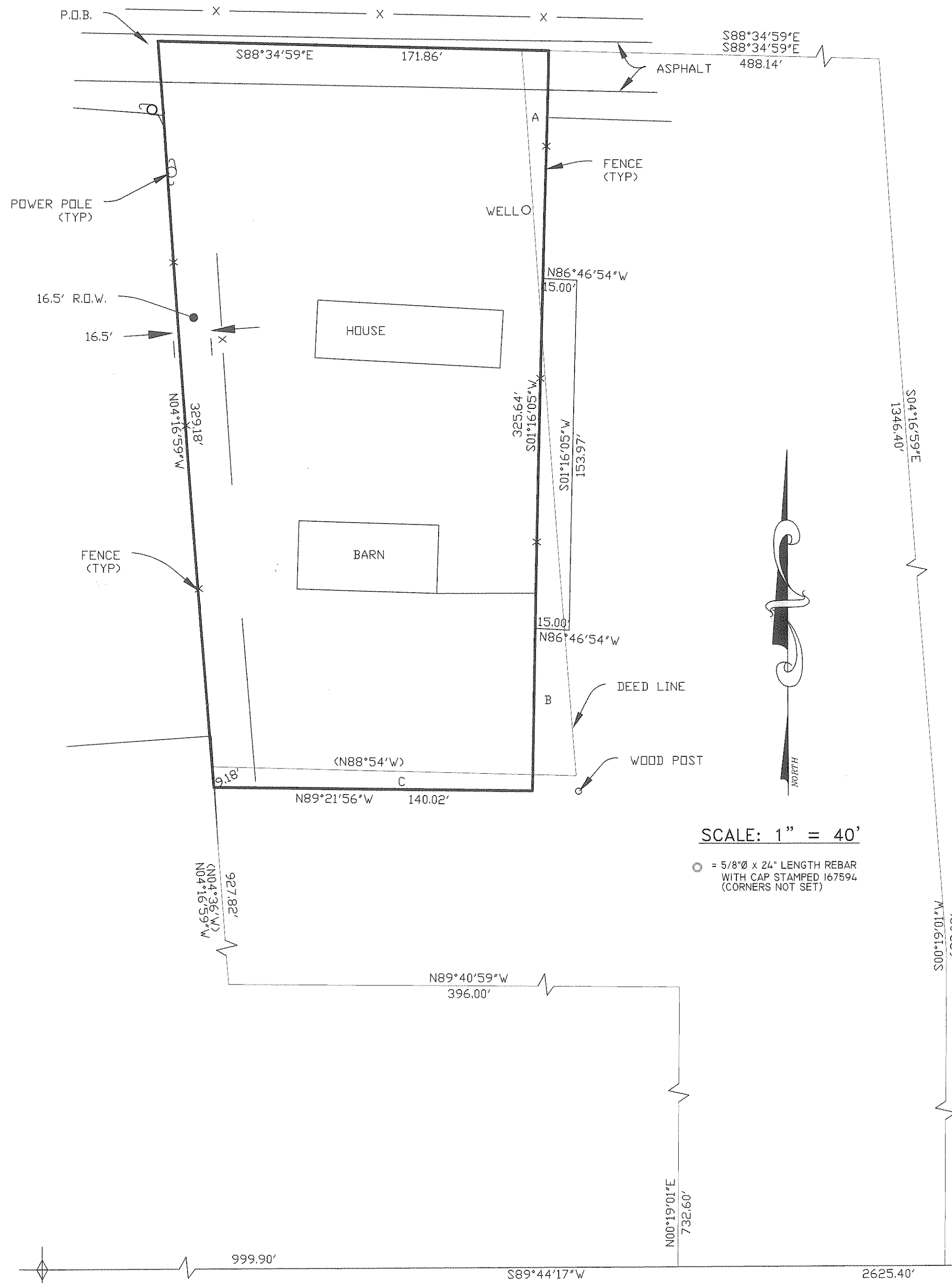
Darrell Allen
Part of the Southeast quarter of section 17, Township 6 North, Range 2 East, Salt Lake base and Meridian; beginning at a point North 89°44'17" East 999.90 feet along the quarter section line, North 0°19'01" West 732.60 feet, (North 732.60') South 89°40'59" West 396.00 feet (West 396.00') and North 4°16'59" West 927.82 feet (N4°36'W) from the South quarter corner of said section 17 and running thence North 4°16'59" West 329.18 feet to the center of street (N4°36'W); thence South 88°34'59" East 171.86 feet (S88°54'E) along the center of street; thence South 1°16'05" West 325.64 feet; thence North 89°21'56" West 140.02 feet to the point of beginning. Subject to a non-exclusive easement and right of way over and across the West 16.5 feet, contains 50,944 sq. ft.

Darrell Allen to Garth Allen (B)
Part of the Southeast quarter of section 17, Township 6 North, Range 2 East, Salt Lake base and Meridian; beginning at a point North 89°44'17" East 999.90 feet along the quarter section line, North 0°19'01" East 732.60 feet, (North 732.60') South 89°40'59" West 396.00 feet (West 396.00') North 4°16'59" West 937.00 feet (N 4°36' W) and South 88°34'59" West 140.90 feet (S 88°54' E.) from the South quarter corner of said section 17 and running thence North 1°16'05" East 203.67 feet; thence South 4°16'59" East 197.42 feet (S.4°36'W.); thence North 88°34'59" West 19.10 feet (S. 88°54' E.) to the point of beginning, contains 1876 sq. ft.

REMAINDER
Part of the Southeast quarter of section 17, Township 6 North, Range 2 East, Salt Lake base and Meridian; beginning at a point North 89°44'17" East 999.90 feet along the quarter section line, North 0°19'01" East 732.60 feet, (RECORD North 732.60') South 89°40'59" West 396.00 feet (West 396.00') and North 4°16'59" West 927.82 feet (N 4°36' W) from the South quarter corner of said section 17 and running thence South 89°21'56" East 140.02 feet; (N 88°54' W.) thence North 1°16'05" East 325.64 feet; thence South 88°34'59" East 488.14 feet; (S. 88°54' E.); thence South 4°16'59" West 1346.40 feet (S.4°36'E.); thence South 0°19'01" West 628.08 feet (South 612.48 feet) to the quarter section line; thence South 89°44'17" West 271.06 feet (273.90') along the quarter section line to the point of beginning.


Garth Allen to Darrell Allen (C)
Part of the Southeast quarter of section 17, Township 6 North, Range 2 East, Salt Lake base and Meridian; beginning at a point North 89°44'17" East 999.90 feet along the quarter section line, North 0°19'01" East 732.60 feet, (North 732.60') South 89°40'59" West 396.00 feet (West 396.00') and North 4°16'59" West 927.82 feet (N4°36'W) from the South quarter corner of said section 17 and running thence North 4°16'59" West 9.18 feet (N4°36'W); thence South 88°34'59" East 140.90 feet (S88°54'E); thence South 1°16'05" West 7.22 feet; thence North 89°21'56" West 140.02 feet to the point of beginning, contains 1150 sq. ft.

Water line easement
Part of the Southeast quarter of section 17, Township 6 North, Range 2 East, Salt Lake base and Meridian; beginning at a point North 89°44'17" East 999.90 feet along the quarter section line, North 0°19'01" East 732.60 feet (North 732.60'); South 89°40'59" West 396.00 feet (West 396.00') North 4°16'59" West 937.00 feet (N4°36'W); South 88°34'59" West 140.90 feet (S88°54'E); and North 1°16'05" East 64.29 feet from the South quarter corner of said section 17 and running thence North 1°16'05" East 153.97 feet; thence South 86°46'54" East 15.00 feet; thence South 1°16'05" West 153.97 feet; thence North 86°46'54" West 15.00 feet to the point of beginning.



S 1/4 COR. SEC. 17
T6N, R2E, SLB&M

S.E. COR. SEC. 17
T6N, R2E, SLB&M

 LANDMARK SURVEYING, INC. A COMPLETE LAND SURVEYING SERVICE 4646 S. 3500 W. #-3, WEST HAVEN, UTAH 84401 PHONE 801-731-4075	
CLIENT: DARRELL ALLEN	
LOCATION: S.E. 1/4 SEC. 17, T6N, R2E, SLB&M 8500 E. 500 S. HUNTSVILLE, UT.	
SURVEYED: JULY 2013	
REVISIONS:	DRAWN BY: D.B.
DEC. 2, 2013	CHECKED BY: D.B.
	DATE: OCT. 2013
	FILE: 3330ALLEN