

SUBDIVISION PLAT
VENTURE ACADEMY SUBDIVISION 1ST AMENDMENT

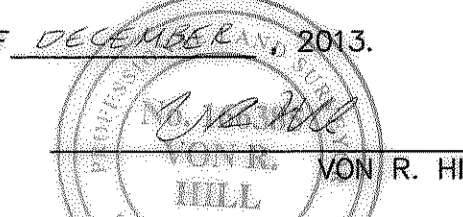
INCLUDING ALL OF LOT 2 VENTURE ACADEMY SUBDIVISION
 LOCATED IN THE SW AND NW QUARTERS OF SECTION 12, TOWNSHIP 6 NORTH, RANGE 2 WEST, S.L.B.&M.
 MARRIOTT-SLATERVILLE, WEBER COUNTY, UTAH
 DECEMBER 2013

SURVEYOR'S CERTIFICATE

I, VON R. HILL, DO HEREBY CERTIFY THAT I AM A REGISTERED PROFESSIONAL LAND SURVEYOR IN THE STATE OF UTAH, AND THAT I HOLD CERTIFICATE NO. 166385 IN ACCORDANCE WITH TITLE 58, CHAPTER 22, OF THE PROFESSIONAL ENGINEERS AND LAND SURVEYORS LICENSING ACT. I ALSO CERTIFY THAT THIS PLAT OF VENTURE ACADEMY SUBDIVISION 1ST AMENDMENT IN MARRIOTT-SLATERVILLE CITY, WEBER COUNTY, UTAH HAS BEEN CORRECTLY DRAWN TO THE DESIGNATED SCALE AND IS A TRUE AND CORRECT REPRESENTATION OF THE FOLLOWING DESCRIPTION OF LANDS INCLUDED IN SAID SUBDIVISION, BASED ON DATA COMPILED FROM RECORDS IN THE WEBER COUNTY RECORDER'S OFFICE, AND OF A SURVEY MADE ON THE GROUND IN ACCORDANCE WITH SECTION 17-23-17. MONUMENTS HAVE BEEN SET AS DEPICTED ON THIS DRAWING.

SIGNED THIS 23 DAY OF DECEMBER, 2013.

166385
 LICENSE NO.



OWNER'S DEDICATION

WE THE UNDERSIGNED OWNERS OF THE HEREON DESCRIBED TRACT OF LAND, HEREBY SET APART AND SUBDIVIDE THE SAME INTO LOTS AND STREETS AS SHOWN ON THIS PLAT, AND NAME SAID TRACT VENTURE ACADEMY SUBDIVISION 1ST AMENDMENT, AND HEREBY DEDICATE, GRANT AND CONVEY TO MARRIOTT-SLATERVILLE CITY, UTAH COUNTY, UTAH, ALL THOSE PARTS OR PORTIONS OF SAID TRACT OF LAND DESIGNATED AS STREETS, THE SAME TO BE USED PUBLIC THROUGHFARES AND DRAINAGE PURPOSES AS SHOWN HEREON, THE SAME TO BE USED FOR THE INSTALLATION, MAINTENANCE, AND OPERATION OF THE PUBLIC UTILITY SERVICE LINES AND DRAINAGE, AS MAY BE AUTHORIZED BY MARRIOTT-SLATERVILLE CITY. THE SECONDARY WATER SYSTEM WITH ALL ASSOCIATED WATER RIGHTS AND SHARES ARE ALSO HEREBY DEDICATED TO MARRIOTT-SLATERVILLE CITY UPON THE ELAPSE OF ONE YEAR AFTER FINAL ACCEPTANCE OF THE SUBDIVISION IMPROVEMENTS.

SIGNED THIS 17 DAY OF JANUARY, 2014.

Frank S. Blair
 FRANK S. BLAIR FAMILY LIMITED PARTNERSHIP

BOUNDARY DESCRIPTION

ALL OF LOT 2 VENTURE ACADEMY SUBDIVISION, MARRIOTT-SLATERVILLE, WEBER COUNTY, UTAH, CONTAINING 5.696 ACRES

VENTURE ACADEMY SUBDIVISION WAS RECORDED NOVEMBER 14, 2008, ENTRY 2375573, BOOK 69, PAGE 44, WEBER COUNTY RECORDER'S OFFICE.

MORE PARTICULARLY DESCRIBED AS FOLLOWS:

BEGINNING AT A POINT WHICH IS SOUTH 0°12'35" EAST 3634.31 FEET AND SOUTH 87°55'25" EAST 2011.45 FEET FROM THE NORTHWEST CORNER OF SECTION 12, TOWNSHIP 6 NORTH, RANGE 2 WEST, SALT LAKE BASE AND MERIDIAN AND RUNNING THENCE NORTH 0°34'25" EAST 488.70 FEET; THENCE SOUTH 89°25'35" EAST 237.19 FEET; THENCE SOUTH 59°29'27" EAST 34.70 FEET; THENCE NORTH 30°30'33" EAST 19.98 FEET; THENCE SOUTH 89°25'35" EAST 224.44 FEET; THENCE SOUTH 0°33'06" WEST 501.56 FEET; THENCE NORTH 87°58'15" WEST 375.46 FEET; THENCE NORTH 87°55'25" WEST 126.57 FEET TO THE POINT OF BEGINNING.

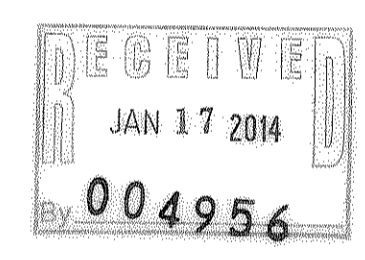
ACKNOWLEDGEMENT

ON THIS 17 DAY OF JANUARY, 2014, PERSONALLY APPEARED BEFORE ME FRANK S. BLAIR WHO BEING BY ME DULY SWORN DID SAY THAT FRANK S. BLAIR IS A PARTNER OF FRANK S. BLAIR FAMILY LIMITED PARTNERSHIP AND THAT SAID INSTRUMENT WAS SIGNED IN BEHALF OF SAID PARTNERSHIP BY A RESOLUTION OF ITS UNLIMITED PARTNERSHIP AND FRANK S. BLAIR ACKNOWLEDGED TO ME THAT SAID EXECUTED THE SAME.

RESIDING AT: DAVIS COUNTY

COMMISSION EXPIRES: 10-22-15

Jim C. Morell
 NOTARY PUBLIC COMMISSIONED IN UTAH
 PRINT NAME



MARRIOTT-SLATERVILLE CITY COUNCIL ACCEPTANCE

THIS IS TO CERTIFY THAT THIS SUBDIVISION PLAT, THE DEDICATION OF STREETS AND OTHER PUBLIC WAYS AND FINANCIAL GUARANTEE OF PUBLIC IMPROVEMENTS ASSOCIATED WITH THIS SUBDIVISION, THEREON ARE HEREBY APPROVED AND ACCEPTED BY THE MARRIOTT-SLATERVILLE CITY COUNCIL ON THE 17 DAY OF JANUARY, 2014.

Keith A. Ralston MAYOR, MARRIOTT-SLATERVILLE CITY
Becky Deuss ATTEST: CITY RECORDER

MARRIOTT-SLATERVILLE CITY ENGINEER

I HEREBY CERTIFY THAT I HAVE EXAMINED THIS PLAT AND FIND IT TO BE CORRECT AND IN ACCORDANCE WITH INFORMATION ON FILE IN THIS OFFICE.
 SIGNED THIS 3 DAY OF JANUARY, 2013.

Leif B. Blum
 SIGNATURE

WEBER COUNTY SURVEYOR

I HEREBY CERTIFY THAT THE WEBER COUNTY SURVEYOR'S OFFICE HAS REVIEWED THIS PLAT FOR MATHEMATICAL CORRECTNESS, SECTION CORNER DATA AND FOR HARMONY WITH LINES AND MONUMENTS ON RECORD IN THE WEBER COUNTY OFFICES. THE APPROVAL OF THIS PLAT BY THE WEBER COUNTY SURVEYOR DOES NOT RELIEVE THE LICENSED LAND SURVEYOR WHO EXECUTES THIS PLAT FROM THE RESPONSIBILITIES AND/OR LIABILITIES ASSOCIATED THEREWITH.
 SIGNED THIS 3 DAY OF JANUARY, 2013.

SIGNATURE

DEVELOPER

RED APPLE FINANCIAL
 1920 W 250 W, SUITE 17
 OGDEN, UT 84404
 801-394-4140

MARRIOTT-SLATERVILLE CITY APPEAL AUTHORITY APPROVAL

THIS IS TO CERTIFY THAT THIS SUBDIVISION PLAT WAS DULY APPROVED AND BY THE MARRIOTT-SLATERVILLE CITY PLANNING COMMISSION ON THE 31 DAY OF JANUARY, 2013.

Thomas A. Hays
 MAGISTRATE, MARRIOTT-SLATERVILLE CITY APPEAL AUTHORITY

MARRIOTT-SLATERVILLE CITY ATTORNEY

I HAVE EXAMINED THE FINANCIAL GUARANTEE AND OTHER DOCUMENTS ASSOCIATED WITH THIS SUBDIVISION PLAT AND IN MY OPINION THEY CONFORM WITH THE CITY ORDINANCE APPLICABLE THERETO AND NOW IN FORCE AND EFFECT.
 SIGNED THIS 30 DAY OF JANUARY, 2013.

Thomas A. Hays
 SIGNATURE

"R" DESIGNATION

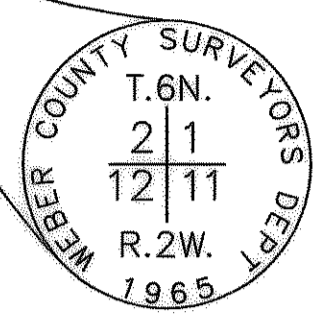
- NO BASEMENTS ARE ALLOWED
- SEWER GRINDER PUMPS ARE TO BE INSTALLED AND MAINTAINED BY THE HOME OWNER WHERE GRAVITY SEWER IS NOT AVAILABLE

NARRATIVE

THIS SUBDIVISION PLAT WAS REQUESTED BY RED APPLE FINANCIAL FOR THE PURPOSE OF SUBDIVIDING LOT 2 OF VENTURE ACADEMY SUBDIVISION INTO (2) TWO COMMERCIAL LOTS.

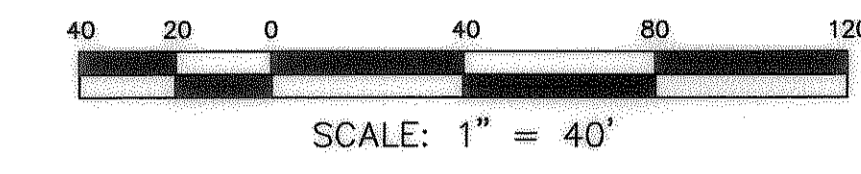
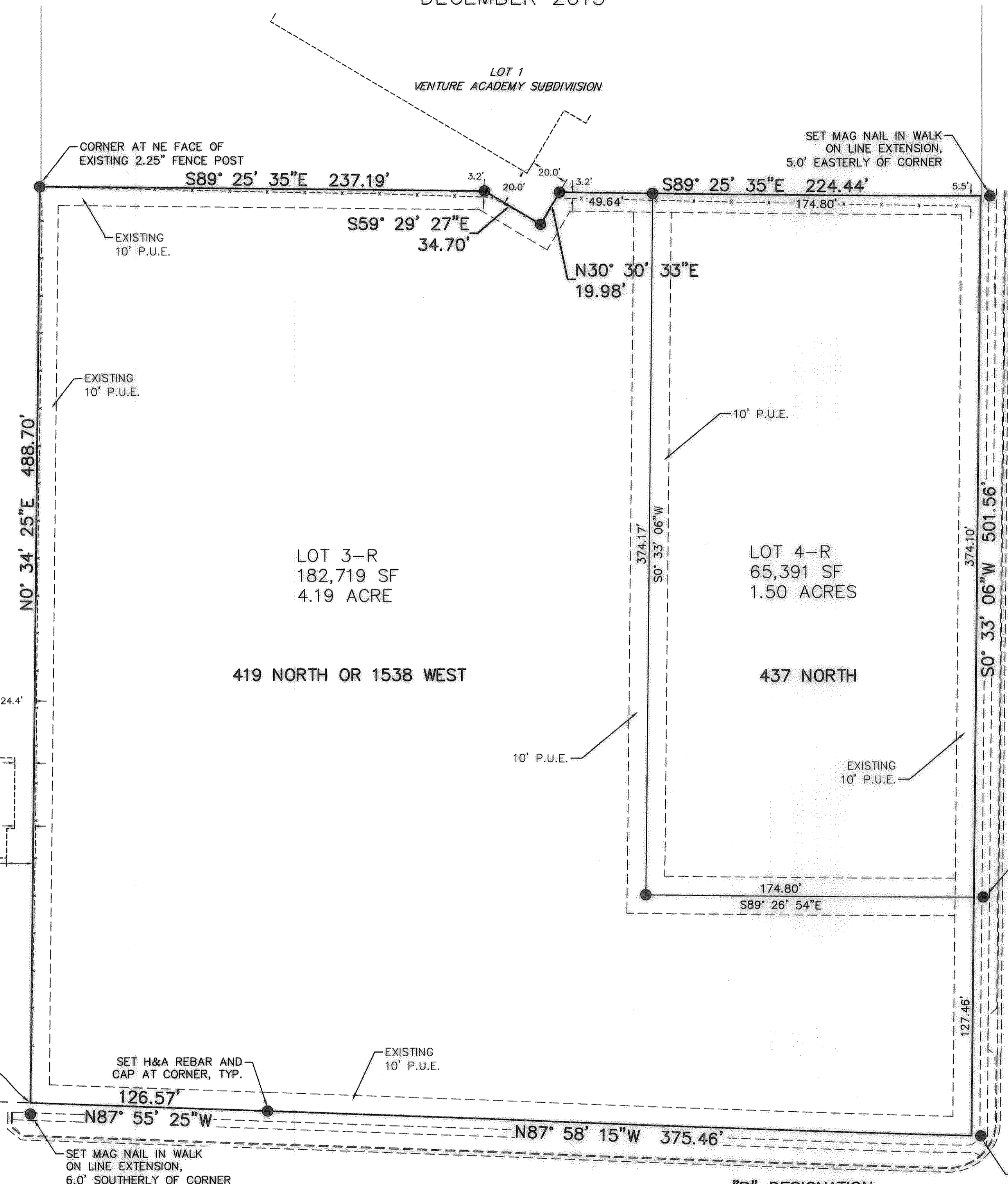
THE LINE BEARING SOUTH 0°12'35" EAST BETWEEN THE BRASS CAP MONUMENTS AT THE NORTHWEST AND THE SOUTHWEST CORNERS OF SECTION 12, TOWNSHIP 6 NORTH, RANGE 2 WEST, SALT LAKE BASE AND MERIDIAN, WAS USED AS THE BASIS OF BEARING. THE BEARING WAS DETERMINED USING THE VENTURE ACADEMY SUBDIVISION PLAT, WHICH ALSO MATCHES THE RECORD BEARING PUBLISHED BY WEBER COUNTY (UTAH STATE PLANE NORTH ZONE GRID BEARING, NAD 1927).

NW CORNER SECTION 12, T.6N., R.2W., S.L.B.&M., FOUND WEBER CO. SURVEY MONUMENT, SET IN 1965 3" BRASS CAP MONUMENT AT GROUND LEVEL, UNDISTURBED

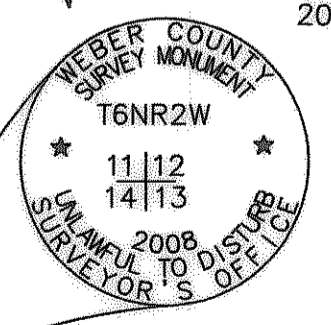
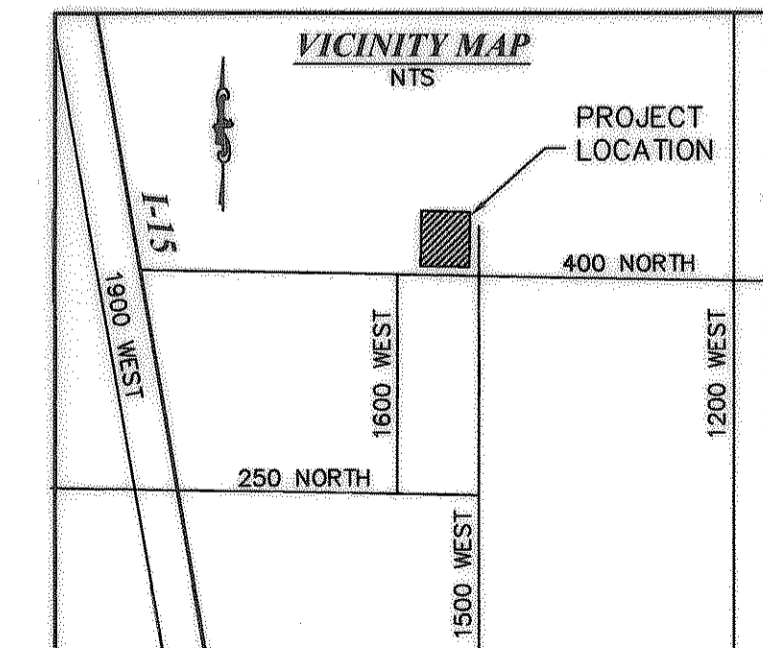


SECTION LINE BASIS OF BEARING S01°12'35"E 5342.66'-MEASURED (5342.92'-RECORD W.C.S.) 3634.31'

MARRIOTT-SLATERVILLE CITY



- LEGEND**
- PROPERTY LINE _____
 - FENCE LINE - - - - -
 - EXISTING BUILDING - - - - -
 - TIE TO MONUMENT - - - - -
 - SECTION LINE - - - - -
 - PUBLIC UTILITY EASEMENT (P.U.E.) - - - - -
 - RECORD CALLS ()
 - SET 24" X 5/8" REBAR, WITH H&A CAP, LS# 166385, AT CORNER (UNLESS OTHERWISE NOTED) ●
 - FOUND PROPERTY MARKER (AS NOTED) ○



SW CORNER SECTION 12, T.6N., R.2W., S.L.B.&M., FOUND WEBER CO. SURVEY MONUMENT, SET IN 2008 3" BRASS CAP MONUMENT AT GROUND LEVEL, UNDISTURBED

H HILL & ARGYLE, Inc.
 Engineering and Surveying
 181 North 200 West, Suite #4, Bountiful, Utah 84010
 (801) 298-2236 Phone, (801) 298-5983 Fax
 12/23/13