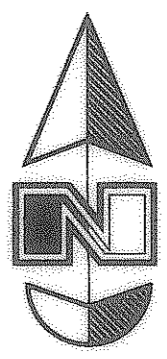


**Legend**

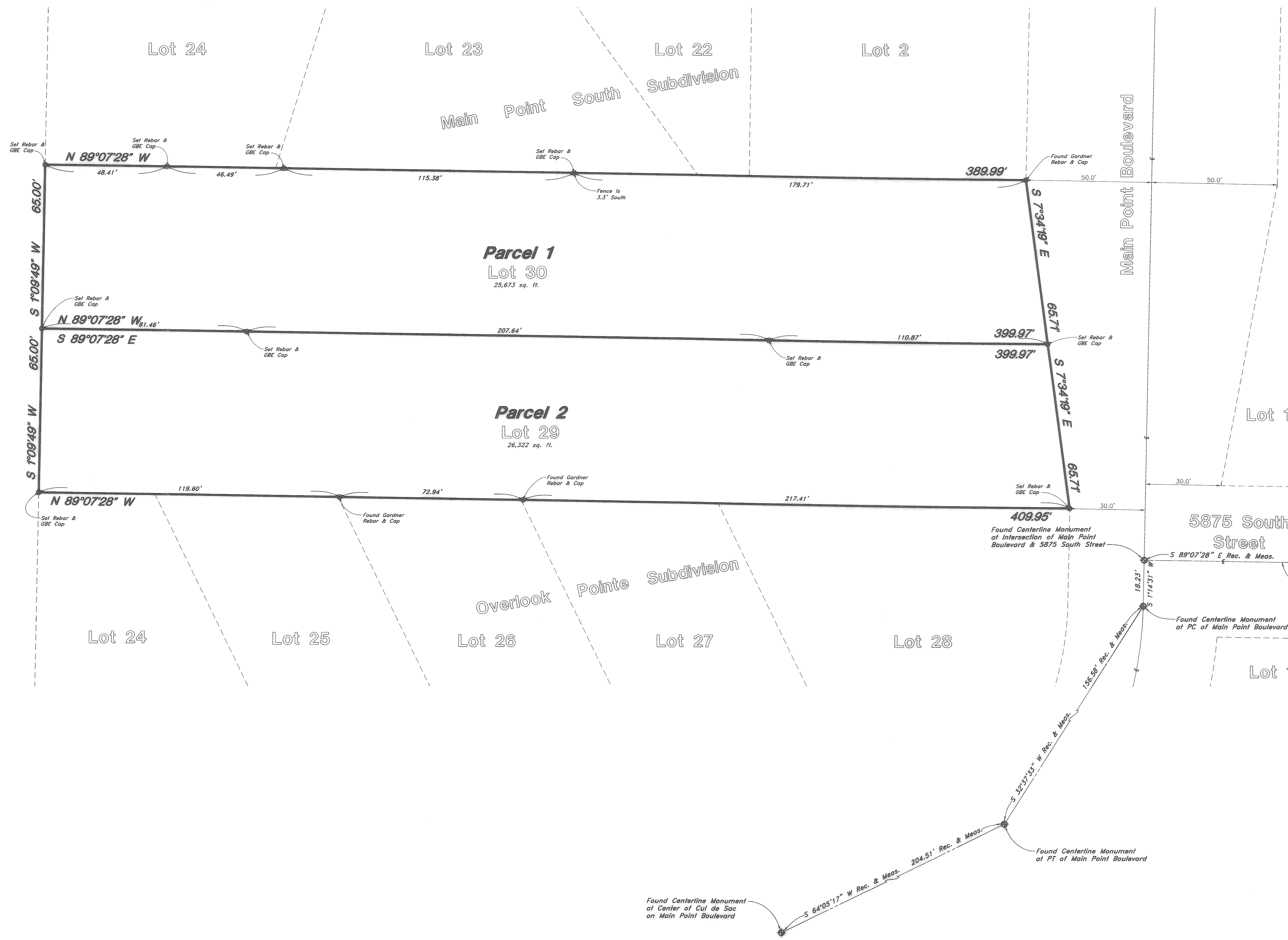
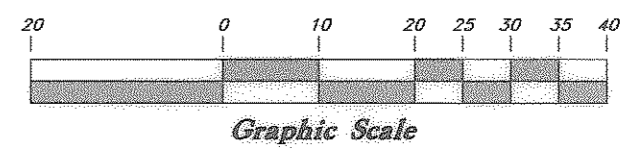
(Note: All items may not appear on drawing.)

- ▲ Set Nail & Washer
- ⊙ Set Rebar & Cap w/ Fanpost
- ⊙ Set Hub & Tack
- ⊙ Found Monument
- (Rad.) Radial Line
- (N/R) Non-Radial Line
- W.C.S. Weber County Surveyor
- Fence
- Rec. & Meas. Recorded & Measured

A 5/8" rebar 24" long with a plastic cap (see detail below) was set as depicted on this drawing.



Scale: 1" = 20'



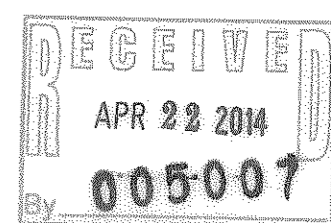
**NARRATIVE**

This property & topographic survey was ordered by Mr. Al Bodaski to clarify the location of property boundaries. Located in the Northwest 1/4 of Section 22, T5N, R1W, Salt Lake Base and Meridian. A centerline monument was found at the intersection of 5875 South Street & 1325 East Street. A line bearing S 89°07'28" E between the centerline monument found at the intersection of 5875 South Street and 1325 East Street, and the centerline monument found at the intersection of 5875 South Street and Main Point Boulevard was used as the Basis of Bearing. The location of the monuments were checked and honored. Property corners were monumented as depicted on this drawing.

**BOUNDARY DESCRIPTION**

Parcel 1  
All of Lot 30, Overlook Pointe Subdivision, South Ogden City, Weber County, Utah.

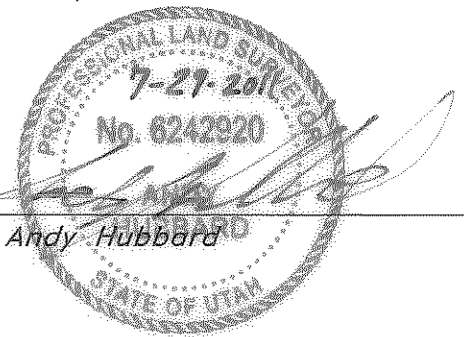
Parcel 2  
All of Lot 29, Overlook Pointe Subdivision, South Ogden City, Weber County, Utah.



**SURVEYOR'S CERTIFICATE**

I, Andy Hubbard, do hereby certify that I am a Professional Land Surveyor, and that I hold Certificate No. 6242920, in accordance with Title 58, Chapter 22, of the Professional Engineers and Surveyors Licensing Act, and I have made a survey of the above described property according to Section 17-23-17 and that the above plat correctly shows the true dimensions of the property surveyed.

Date 7-27-2011



**GREAT BASIN ENGINEERING**

5746 SOUTH 1475 EAST OGDEN, UTAH 84403  
 MAIN (801)399-4515 S.L.C. (801)521-0222 FAX (801)392-7544  
 WWW.GREATBASINENGINEERING.COM

**Record of Survey**

**Bodaski & Ownby Properties**

A part of the Northwest 1/4 of Section 22  
 T5N, R1W, SLB&M, U.S. Survey, Utah  
 South Ogden City, Weber County, Utah