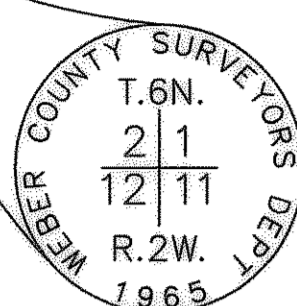
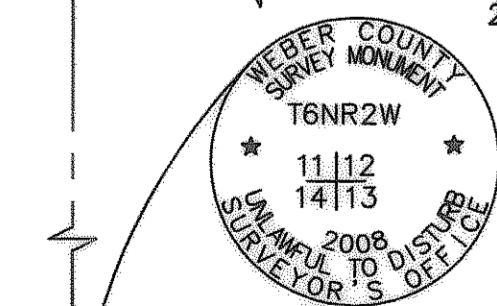


NW CORNER SECTION 12,
T.6N., R.2W., S.L.B.&M.,
FOUND WEBER CO. SURVEY
MONUMENT, SET IN 1965
3" BRASS CAP MONUMENT
AT GROUND LEVEL, UNDISTURBED

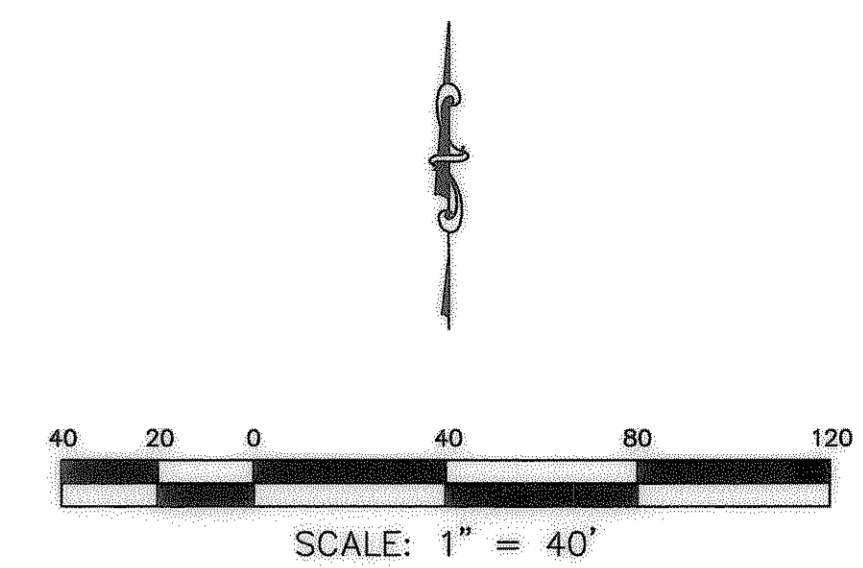
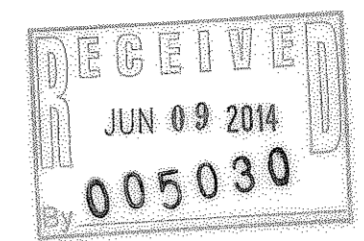
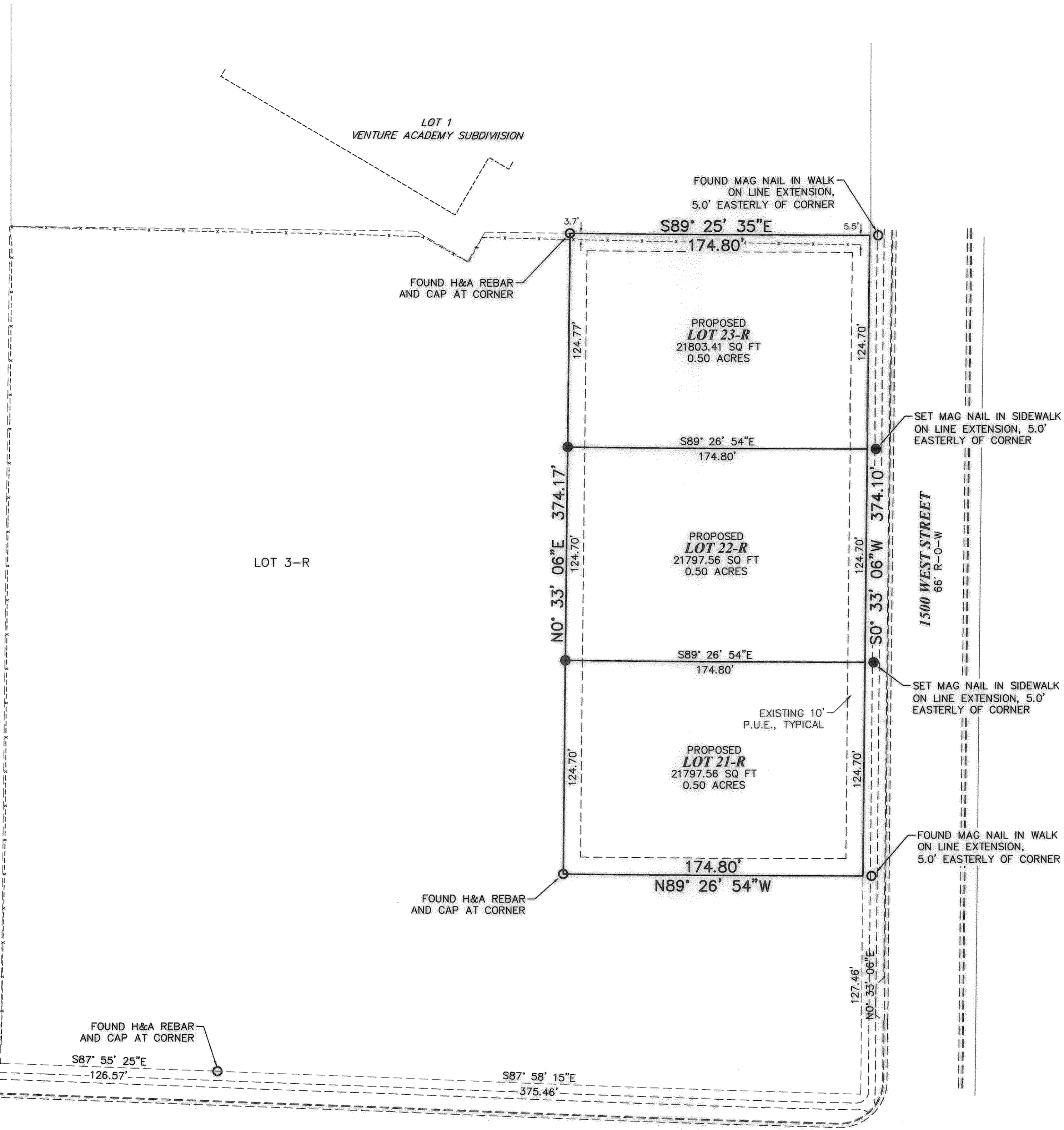


SECTION LINE BASIS OF BEARING S01°2'35"E 5342.86'-MEASURED (5342.92'-RECORD, W.C.S.)
3634.31'

MARRIOTT-SLATERVILLE CITY

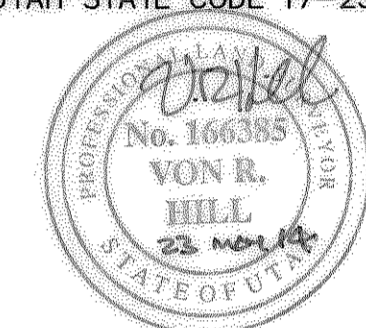


SW CORNER SECTION 12,
T.6N., R.2W., S.L.B.&M.,
FOUND WEBER CO. SURVEY
MONUMENT, SET IN 2008
3" BRASS CAP MONUMENT
AT GROUND LEVEL, UNDISTURBED



CERTIFICATE

I, VON R. HILL, A PROFESSIONAL LAND SURVEYOR ACCORDING TO THE LAWS OF THE STATE OF UTAH, DO CERTIFY THAT I HAVE SURVEYED THE PARCEL OF GROUND SHOWN HEREON ACCORDING TO UTAH STATE CODE 17-23-17.



DESCRIPTION

ALL OF LOT 4-R, VENTURE ACADEMY SUBDIVISION 1ST AMENDMENT SUBDIVISION, MARRIOTT-SLATERVILLE, WEBER COUNTY, UTAH, MORE PARTICULARLY DESCRIBED AS FOLLOWS:

BEGINNING THE SOUTHEAST CORNER OF LOT 4-R, VENTURE ACADEMY SUBDIVISION 1ST AMENDMENT SUBDIVISION, A SUBDIVISION LOCATED IN THE WEST HALF OF SECTION 12, TOWNSHIP 6 NORTH, RANGE 2 WEST, SALT LAKE BASE AND MERIDIAN, IN WEBER COUNTY, UTAH, SAID POINT ALSO BEING SOUTH 00°12'35" EAST 3634.31 FEET ALONG THE SECTION LINE AND SOUTH 87°55'25" EAST 2011.45 FEET TO THE SOUTHWEST CORNER OF VENTURE ACADEMY 1ST AMENDMENT SUBDIVISION AND SOUTH 87°55'25" EAST 126.57 FEET ALONG THE SUBDIVISION LINE AND SOUTH 87°58'15" EAST 375.46 FEET ALONG THE SUBDIVISION LINE TO THE SOUTHEAST CORNER OF SAID SUBDIVISION AND NORTH 00°33'06" EAST 127.46 FEET ALONG THE SUBDIVISION LINE TO SAID POINT OF BEGINNING, AND RUNNING THENCE NORTH 89°26'54" WEST 174.80 FEET; THENCE NORTH 00°33'06" EAST 374.17 FEET; THENCE SOUTH 89°25'35" EAST 174.80 FEET; THENCE SOUTH 00°33'06" WEST 374.10 FEET TO THE POINT OF BEGINNING, CONTAINS 1.50 ACRES.

NARRATIVE

THE PURPOSE OF THE SURVEY WAS TO MARK THE PROPERTY CORNERS. THE BASIS OF BEARING WAS ESTABLISHED BETWEEN THE MONUMENTS SHOWN.

LEGEND

- PROPERTY LINE _____
- FENCE LINE - - - - -
- EXISTING BUILDING [hatched pattern]
- ROAD CENTERLINE [dashed line]
- TIE TO MONUMENT [dash-dot line]
- SECTION LINE [long-dash line]
- CURB, GUTTER, SIDEWALK [short-dash line]
- PUBLIC UTILITY EASEMENT (P.U.E.) [dash-dot-dot line]
- RECORD CALLS ()
- SET 5/8" REBAR WITH H&A CAP, LS# 166385, AT CORNER (UNLESS OTHERWISE NOTED) ●
- FOUND PROPERTY MARKER (AS NOTED) ○

SURVEY REQUESTED BY
STOUT BUILDERS

LOT 4-R, VENTURE ACADEMY SUBDIVISION*
LOCATED IN THE WEST 1/2 OF SECTION 12, T.6N., R.2W., S.L.B.&M.
MARRIOTT-SLATERVILLE CITY, WEBER COUNTY, UTAH

DRAWN BY JRC	DATE 05/22/14
APPROVED VRH	DATE XX/XX/XX
REV. BY	DATE
SHEET 1	OF 1
SHEET NAME BOUNDARY	
DRAWING NAME FINAL PLAT 2 28APR14	
PROJECT NO. 13-172	

H & A HILL & ARGYLE, Inc.
Engineering and Surveying
181 North 200 West, Suite #4, Bountiful, Utah 84010
(801) 298-2236 Phone, (801) 298-5883 Fax