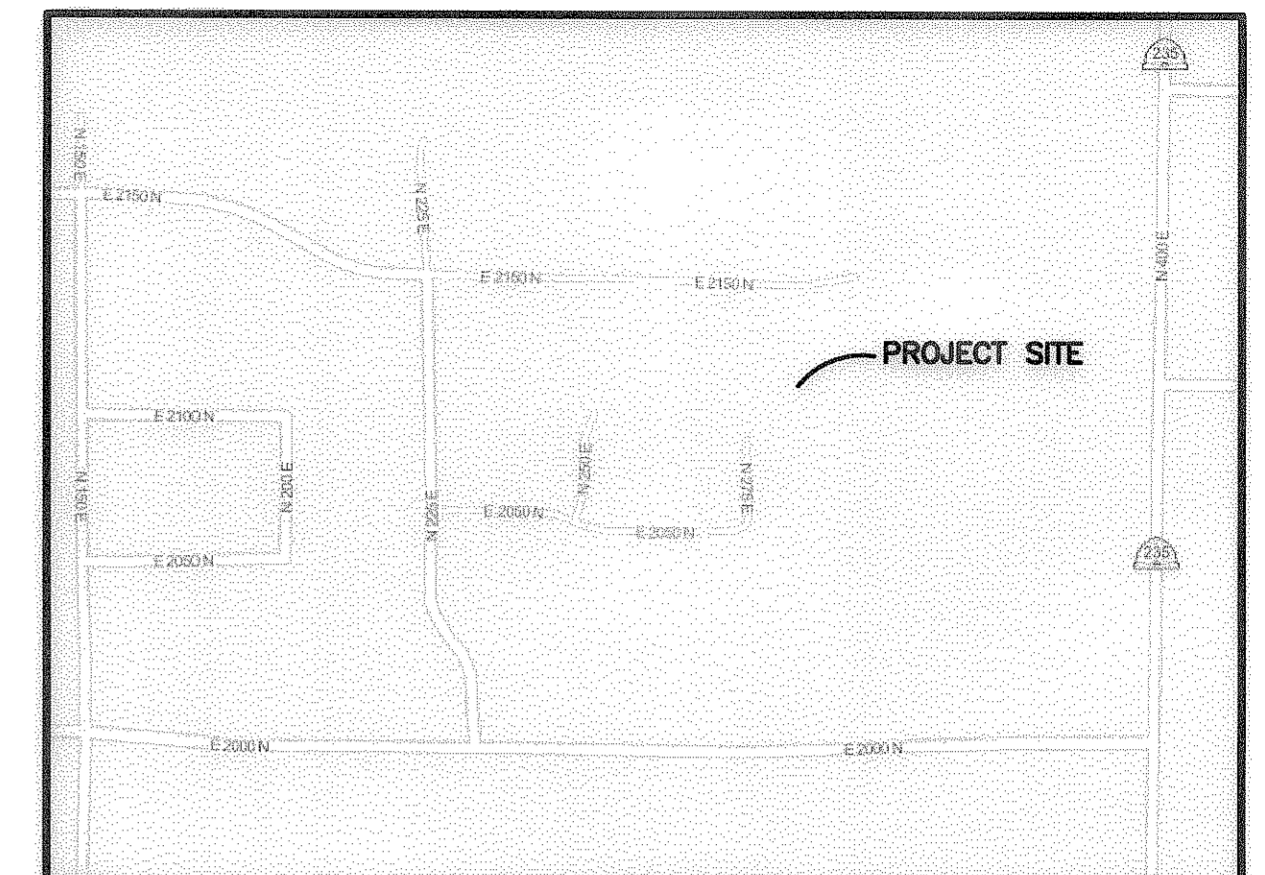


# LOTS 27 & 28 OF SLEEPY HOLLOW NORTH SUBDIVISION, PHASE 2

PART OF THE SOUTHEAST QUARTER OF SECTION 32, T.7N., R.1W., S.L.B.&M., U.S. SURVEY  
NORTH OGDEN, WEBER COUNTY



**VICINITY MAP**  
SCALE: NONE

**CURVE TABLE**

#	RADIUS	ARC LENGTH	CHD LENGTH	TANGENT	CHD BEARING	DELTA
C1	55.00'	38.01'	37.26'	19.80'	S02°57'21"W	39°35'52"
C2	15.00'	5.70'	5.67'	2.89'	S11°51'40"W	21°47'12"
C3	66.14'	5.42'	5.42'	2.71'	S03°35'00"W	4°41'57"

**LEGEND**

- ◆ = SECTION CORNER
- = SET PLUG IN CURB
- = FOUND STREET MONUMENT
- = SET 5/8" REBAR AND PLASTIC CAP STAMPED "REEVE & ASSOCIATES"
- = LOT LINE
- - - = SECTION TIE LINE
- - - = ADJOINING PROPERTY

Scale: 1" = 10'

**BASIS OF BEARINGS**  
THE BASIS OF BEARINGS FOR THIS PLAT IS THE LINE BETWEEN THE TWO FOUND CENTERLINE MONUMENTS IN SLEEPY HOLLOW CIRCLE (275 EAST). SHOWN HEREON: N00°58'04"E

**NARRATIVE**  
THE PURPOSE OF THIS SURVEY TO DEFINE THE BOUNDARY OF SUBJECT PARCELS. ALL LOT CORNERS WERE SET WITH A 5/8" REBAR AND PLASTIC CAP STAMPED "REEVE & ASSOCIATES". ALL FRONT LOT CORNERS WERE SET WITH A LEAD PLUG IN THE TOP BACK OF CURB AT THE EXTENSION OF THE SIDE LOT LINES.

**BOUNDARY DESCRIPTION**  
ALL OF LOT 27 AND 28 OF SLEEPY HOLLOW NORTH SUBDIVISION, PHASE 2, ACCORDING TO THE OFFICIAL PLAT THEREOF ON FILE AND OF RECORD IN THE OFFICE OF THE RECORDER, WEBER COUNTY.

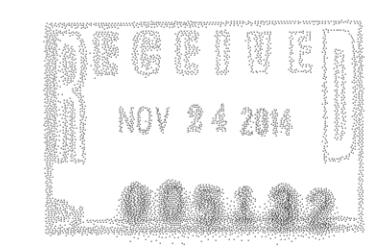
**SURVEYOR'S CERTIFICATE**  
I, **CHAD A. ANDERSON**, DO HEREBY CERTIFY THAT I AM A REGISTERED PROFESSIONAL LAND SURVEYOR IN THE STATE OF UTAH IN ACCORDANCE WITH TITLE 58, CHAPTER 22, PROFESSIONAL ENGINEERS AND LAND SURVEYORS ACT; AND THAT I HAVE COMPLETED A SURVEY OF THE PROPERTY DESCRIBED ON THIS PLAT IN ACCORDANCE WITH SECTION 17-23-17 AND HAVE VERIFIED ALL MEASUREMENTS, AND HAVE PLACED MONUMENTS AS REPRESENTED ON THIS PLAT. I FURTHER CERTIFY THAT THIS PLAT IS A CORRECT REPRESENTATION OF THE LAND SURVEYED AND HAS BEEN PREPARED IN CONFORMITY WITH THE MINIMUM STANDARDS AND REQUIREMENTS OF THE LAW.

SIGNED THIS 4 DAY OF NOVEMBER, 2014.

7736336  
UTAH LICENSE NUMBER

**REGISTERED LAND SURVEYOR**  
7736336  
**CHAD A. ANDERSON**  
STATE OF UTAH

CHAD A. ANDERSON



**Reeve & Associates, Inc.**  
200 CHAMBERS STREET SUITE 200  
NORTH OGDEN, UTAH 84401  
TEL: (435) 631-3434 FAX: (435) 631-3435  
WWW.REEVE-ASSOCIATES.COM  
LAND PLANNERS • CIVIL ENGINEERS • LAND SURVEYORS  
TRAFFIC ENGINEERS • STRUCTURAL ENGINEERS • LANDSCAPE ARCHITECTS

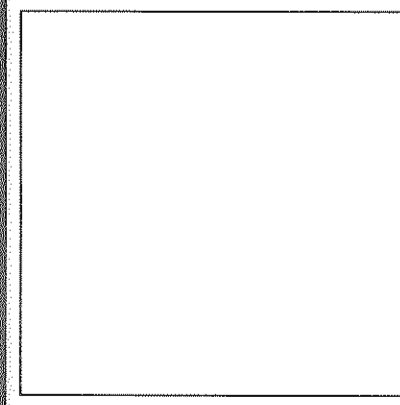
**IRA**

**REVISIONS**

NO.	DATE	DESCRIPTION

**RECORD OF SURVEY**  
NORTH OGDEN, WEBER COUNTY, UTAH

**LOTS 27 & 28 OF SLEEPY HOLLOW NORTH SUBDIVISION, PHASE 2**



**Project Info.**

Surveyor: C. ANDERSON  
Designer: E. ROCHE  
Begin Date: 11-03-14  
Name: SLEEPY HOLLOW NORTH SUB. PHS. 2  
Scale: 1"=10'  
Checked: \_\_\_\_\_  
Number: 3784-62