

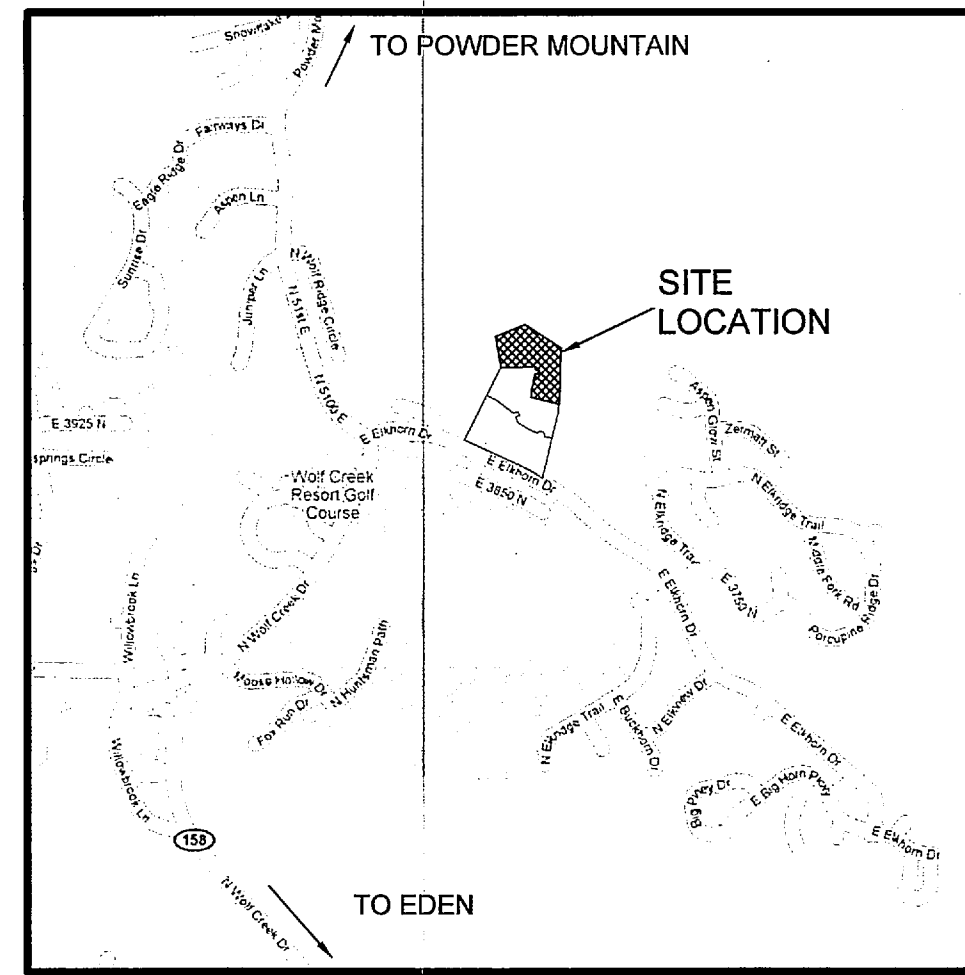
PLAT NOTES:

- 1. IN LIEU OF A SECONDARY ACCESS, ALL HOMES BUILT WITHIN THIS SUBDIVISION WILL BE REQUIRED TO INCLUDE A FIRE SPRINKLER SYSTEM.
2. 10' PUBLIC UTILITY AND SNOW STORAGE EASEMENT TYPICAL AS SHOWN UNLESS OTHERWISE NOTED.

NARRATIVE:

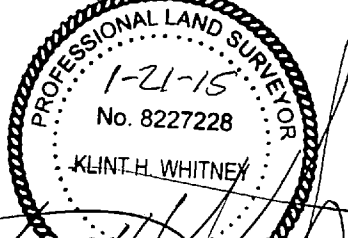
- 1. THE BASIS OF BEARING IS NORTH 89°14'39" WEST 2659.36' FROM THE MONUMENTED CENTER OF SECTION 22, T7N, R1E, SLB&M, TO THE MONUMENTED WEST QUARTER CORNER OF SAID SECTION 22, AS SHOWN ON THE ELKHORN SUBDIVISION, PHASE 1, ENTRY No. 1415848.
2. THE WOLF RIDGE PHASE 3 & 4 SUBDIVISIONS WERE USED TO ESTABLISH THAT PORTION OF ELKHORN DRIVE NOT DEDICATED IN THE ELKHORN SUBDIVISION, PHASE 1 SUBDIVISION. THE WOLF RIDGE SUBDIVISIONS WERE ROTATED TO MATCH THE ELKHORN SUBDIVISION, PHASE 1, BEARING FOR THE CENTERLINE OF ELKHORN DRIVE.

THE RETREAT AT WOLF CREEK SUBDIVISION PHASE 3 A CLUSTER SUBDIVISION LYING WITHIN THE NORTHEAST QUARTER OF SECTION 22, T7N, R1E, SLB&M, WEBER COUNTY, UTAH JANUARY 2015



SURVEYOR'S CERTIFICATE

I, Clint H. Whitney, do hereby certify that I am a Registered Land Surveyor, and that I hold Certificate No. 8227228 in accordance with Title 58, Chapter 22, Professional Engineers and Land Surveyors Licensing of the State of Utah Act. I further certify that by authority of the Owners I have completed a survey of the property described on this Subdivision Plat in accordance with Section 17-23-17 and have verified all measurements, and have placed monuments as represented on this plat, and that this plat of THE RETREAT AT WOLF CREEK SUBDIVISION PHASE 3 A CLUSTER SUBDIVISION in Weber County, Utah, has been drawn correctly to the designated scale and is a true and correct representation of the herein described lands included in said subdivision, based on data compiled from records in the Weber County Records Office and from said survey made by me on the ground. Each of the Lots located on said tract and this Subdivision Plat complies with the provisions of the current subdivision RE-20 zoning and ordinance regulations of Weber County.



Date 1-21-15 Signature

Table with 4 columns: CURVE, LENGTH, RADIUS, DELTA, TANGENT, CHORD, BEARING. Contains 20 rows of curve data.

Table with 3 columns: LINE, LENGTH, BEARING. Contains 20 rows of line data.

Table with 4 columns: CURVE, LENGTH, RADIUS, DELTA, TANGENT, CHORD, BEARING. Contains 64 rows of curve data.

KRK WOLF CREEK LLC 220160096

Table with 4 columns: PHASE, AREA (sf), COMMON AREA (sf), % OPEN SPACE. Contains 4 rows of area calculation data.

W 1/4 OF SECTION 22, T7N, R1E, SLB&M (FOUND WEBER COUNTY BRASS CAP MONUMENT 1981 GOOD COND.) CENTER OF SECTION 22, T7N, R1E, SLB&M (FOUND WEBER COUNTY BRASS CAP MONUMENT 1967 GOOD COND.)

BASIS OF BEARING N89°14'39"W (2659.36' WCS 2659.40' MEAS.) STATE PLANE GRID BEARING PER W.C.S.

GARDNER ENGINEERING logo and contact information: 5150 S. 375 E. OGDEN UTAH 801-476-0202

WEBER COUNTY COMMISSION ACCEPTANCE section with signature lines for Chairman and Attest.

WEBER COUNTY ENGINEER section with signature line for the Engineer.

WEBER-MORGAN HEALTH DEPARTMENT section with signature line.

WEBER COUNTY ATTORNEY section with signature line.

WEBER COUNTY SURVEYOR section with signature line.

WEBER COUNTY PLANNING COMMISSION APPROVAL section with signature line for Chairman.

WEBER COUNTY RECORDER section with fields for Entry No., Fee Paid, and Recorder signature.