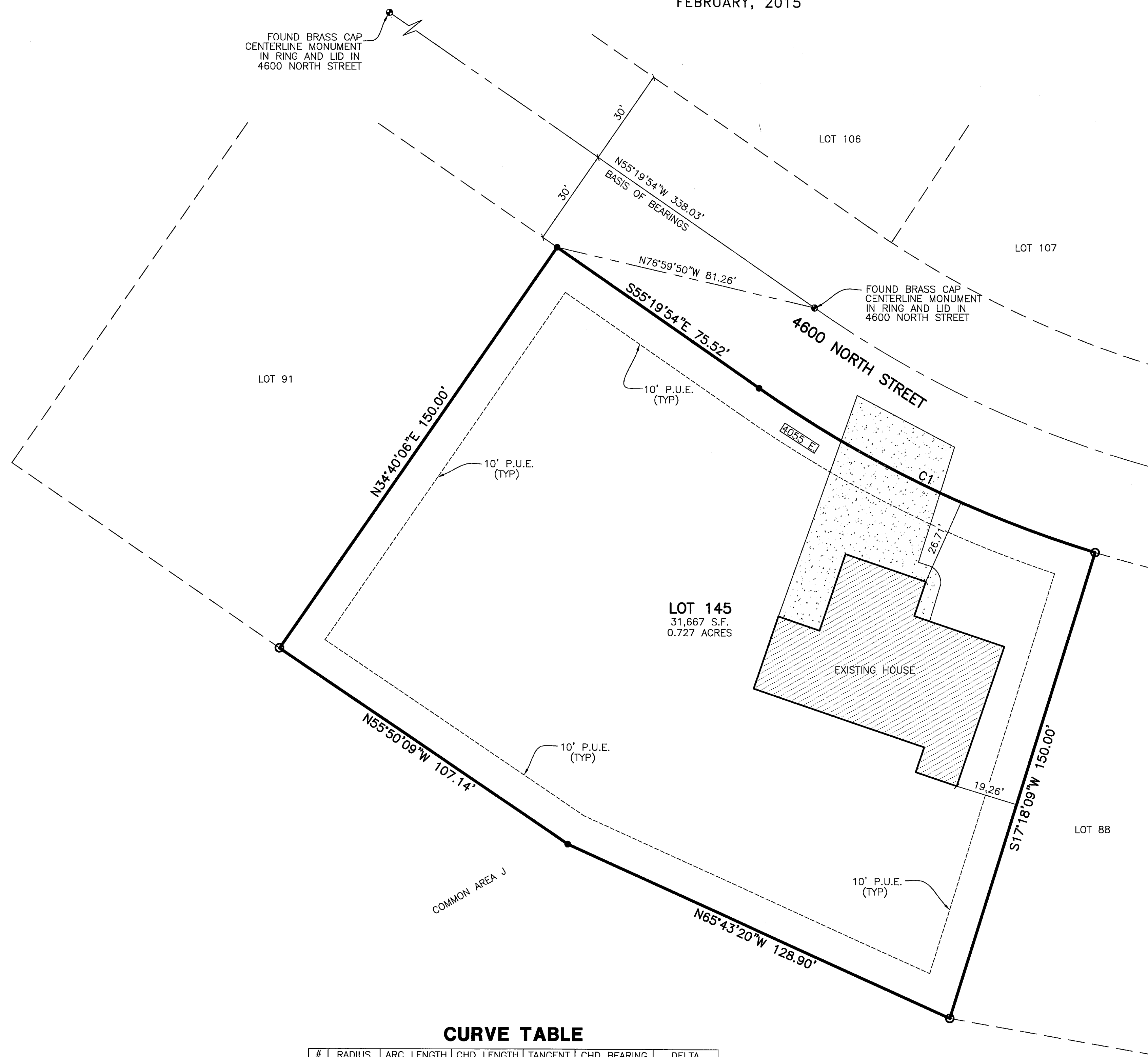


SHEEP CREEK CLUSTER SUBDIVISION PHASE 3 1ST AMENDMENT

AMENDING LOTS 89 & 90 OF SHEEP CREEK CLUSTER SUBDIVISION PHASE 3

PART OF THE SOUTHWEST QUARTER OF SECTION 16 AND PART OF THE SOUTHEAST QUARTER OF SECTION 17, T.7N., R.1E., S.L.B.&M., U.S. SURVEY

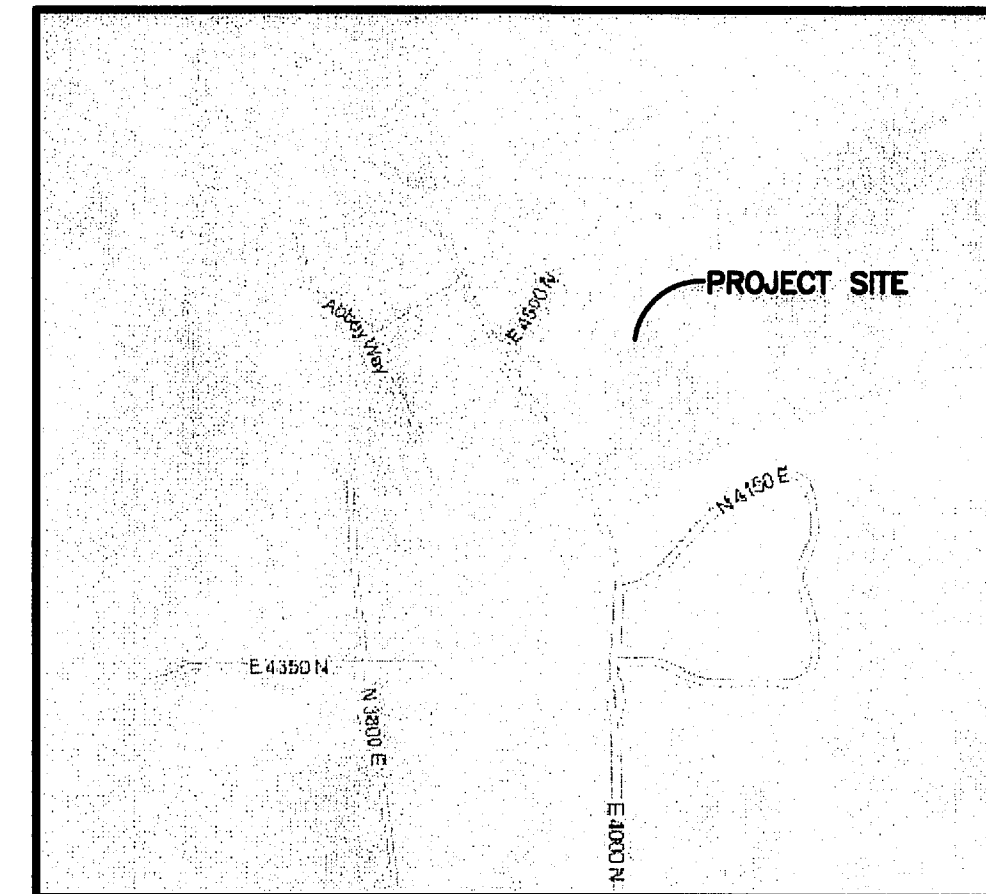
WEBER COUNTY, UTAH
FEBRUARY, 2015



CURVE TABLE

#	RADIUS	ARC LENGTH	CHD LENGTH	TANGENT	CHD BEARING	DELTA
C1	380.70'	115.39'	114.95'	58.14'	N64°00'53\"W	17°21'57\"

DEVELOPER:
DAVID MANGUM
2810 HERMOSA WAY
SALT LAKE CITY, UT. 84124



VICINITY MAP
SCALE: NONE

BASIS OF BEARINGS

THE BASIS OF BEARINGS FOR THIS PLAT IS BETWEEN TWO FOUND CENTERLINE MONUMENTS FROM THE ORIGINAL SHEEP CREEK CLUSTER SUBDIVISION PHASE 3 AS SHOWN, SAID BEARING BEING N55°19'54\"E. SAID BEARING IS UTAH STATE PLANE NORTH GRID AS PER WEBER COUNTY SURVEY.

NARRATIVE

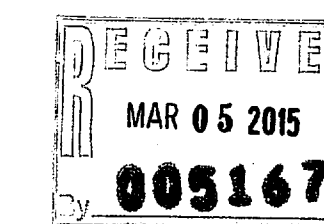
THE PURPOSE OF THIS PLAT IS TO CREATE AN AMENDED SUBDIVISION PLAT COMBINING LOTS 89 AND LOT 90 OF SHEEP CREEK CLUSTER SUBDIVISION PHASE 3. THE ORIGINAL BOUNDARIES OF LOTS 89 AND 90 WERE RETRACED USING THE ORIGINAL STREET MONUMENTS, FOUND AS SHOWN. ALL BOUNDARY CORNERS WERE EITHER SET OR FOUND AS SHOWN ON PLAT. ALL CORNERS SHOWN ON PLAT AS "SET" WERE SET WITH A 5/8" X 24" REBAR AND PLASTIC CAP STAMPED "REEVE & ASSOCIATES".

BOUNDARY DESCRIPTION

PART OF THE SOUTHWEST QUARTER OF SECTION 16 AND PART OF THE SOUTHEAST QUARTER OF SECTION 17, T.7N., R.1E., S.L.B.&M., U.S. SURVEY, DESCRIBED AS FOLLOWS:

ALL OF LOTS 89 AND 90, SHEEP CREEK CLUSTER SUBDIVISION PHASE 3, ACCORDING TO THE OFFICIAL PLAT THEREOF, ACQUIRED IN THE OFFICE OF THE WEBER COUNTY RECORDER IN BOOK 62, PAGES 68 AND 69.

CONTAINING 31,668 SQUARE FEET OR 0.727 ACRES



LEGEND

- = SECTION CORNER
 - = SET 5/8" X 24" REBAR AND PLASTIC CAP STAMPED "REEVE & ASSOCIATES"
 - = FOUND CENTERLINE MONUMENT
 - = FOUND REBAR
 - = BOUNDARY LINE
 - = ADJOINING PROPERTY
 - = EASEMENTS
 - = SECTION TIE LINE
 - = ROAD CENTERLINE
 - = EXISTING HOUSE
 - = EXISTING CONCRETE
 - = PUBLIC UTILITY EASEMENT
- Scale: 1" = 20'

SURVEYOR'S CERTIFICATE
I, TREVOR J. HATCH, DO HEREBY CERTIFY THAT I AM A PROFESSIONAL LAND SURVEYOR, AND THAT I HOLD LICENSE NO. 9031945 AS PRESCRIBED UNDER THE LAWS OF THE STATE OF UTAH. I FURTHER CERTIFY THAT BY AUTHORITY OF THE OWNERS, I HAVE MADE A SURVEY OF THE TRACT OF LAND SHOWN ON THIS PLAT AND DESCRIBED HEREON, AND HAVE SUBDIVIDED SAID TRACT OF LAND INTO LOTS AND STREETS, TOGETHER WITH EASEMENTS, HEREAFTER TO BE KNOWN AS SHEEP CREEK CLUSTER SUBDIVISION PHASE 3 1ST AMENDMENT IN WEBER COUNTY, UTAH AND THAT THE SAME HAS BEEN CORRECTLY SURVEYED AND MONUMENTED ON THE GROUND AS SHOWN ON THIS PLAT.

SIGNED THIS 2nd DAY OF March, 2015.

9031945
UTAH LICENSE NUMBER

Trevor J. Hatch
TREVOR J. HATCH

OWNERS DEDICATION AND CERTIFICATION
WE THE UNDERSIGNED OWNERS OF THE HEREIN DESCRIBED TRACT OF LAND, DO HEREBY SET APART AND SUBDIVIDE THE SAME INTO LOTS AND STREETS (PRIVATE STREETS, PRIVATE RIGHTS-OF-WAY) AS SHOWN ON THE PLAT AND NAME SAID TRACT SHEEP CREEK CLUSTER SUBDIVISION PHASE 3 1ST AMENDMENT, AND DO HEREBY DEDICATE TO PUBLIC USE ALL THOSE PARTS OR PORTIONS OF SAID TRACT OF LAND DESIGNATED AS STREETS, THE SAME TO BE USED AS PUBLIC THOROUGHFARES AND ALSO TO GRANT AND DEDICATE A PERPETUAL RIGHT AND EASEMENT OVER, UPON AND UNDER THE LANDS DESIGNATED HEREON AS PUBLIC UTILITY, STORM WATER DETENTION PONDS DRAINAGE EASEMENTS AND CANAL MAINTENANCE EASEMENT, THE SAME TO BE USED FOR THE INSTALLATION MAINTENANCE AND OPERATION OF PUBLIC UTILITY SERVICE LINE, STORM DRAINAGE FACILITIES, IRRIGATION CANALS OR FOR THE PERPETUAL PRESERVATION OF WATER CHANNELS IN THEIR NATURAL STATE WHICH EVER IS APPLICABLE AS MAY BE AUTHORIZED BY THE GOVERNING AUTHORITY, WITH NO BUILDINGS OR STRUCTURES BEING ERRECTED WITHIN SUCH EASEMENTS.

SIGNED THIS _____ DAY OF _____, 20____.

STEPHANIE R. MANGUM

ACKNOWLEDGMENT
STATE OF UTAH) ss.
COUNTY OF _____)

ON THE _____ DAY OF _____, 20____, PERSONALLY APPEARED BEFORE ME, THE UNDERSIGNED NOTARY PUBLIC, _____ (AND) _____ SIGNER(S) OF THE ABOVE OWNER'S DEDICATION AND CERTIFICATION, WHO BEING BY ME DULY SWORN, DID ACKNOWLEDGE TO ME _____ SIGNED IT FREELY, VOLUNTARILY, AND FOR THE PURPOSES THEREIN MENTIONED.

COMMISSION EXPIRES _____ NOTARY PUBLIC

ACKNOWLEDGMENT
STATE OF UTAH) ss.
COUNTY OF _____)

ON THE _____ DAY OF _____, 20____, PERSONALLY APPEARED BEFORE ME, THE UNDERSIGNED NOTARY PUBLIC, _____ (AND) _____ BEING BY ME DULY SWORN, ACKNOWLEDGED TO ME THEY ARE _____ AND _____ OF SAID CORPORATION AND THAT THEY SIGNED THE ABOVE OWNER'S DEDICATION AND CERTIFICATION FREELY, VOLUNTARILY, AND IN BEHALF OF SAID CORPORATION FOR THE PURPOSES THEREIN MENTIONED.

COMMISSION EXPIRES _____ NOTARY PUBLIC

Project Info.
Surveyor: C. ANDERSON
Designer: E. ROCHE
Begin Date: 01-19-15
Name: SHEEP CREEK CLUSTER PHS. 3 1ST AMENDMENT
Number: 6502-01
Revision: 02-25-15
Scale: 1"=20'
Checked: _____

WEBER COUNTY PLANNING COMMISSION APPROVAL
THIS IS TO CERTIFY THAT THIS SUBDIVISION PLAT WAS DULY APPROVED BY THE WEBER COUNTY PLANNING COMMISSION. SIGNED THIS _____ DAY OF _____, 20____.

CHAIRMAN, WEBER COUNTY PLANNING COMMISSION

WEBER COUNTY ENGINEER
I HEREBY CERTIFY THAT THE REQUIRED PUBLIC IMPROVEMENT STANDARDS AND DRAWINGS FOR THIS SUBDIVISION CONFORM WITH THE COUNTY STANDARDS AND THE AMOUNT OF THE FINANCIAL GUARANTEE IS SUFFICIENT FOR THE INSTALLATION OF THESE IMPROVEMENTS.

WEBER COUNTY ENGINEER

WEBER COUNTY COMMISSION ACCEPTANCE
THIS IS TO CERTIFY THAT THIS SUBDIVISION PLAT, THE DEDICATION OF STREETS AND OTHER PUBLIC WAYS AND FINANCIAL GUARANTEE OF PUBLIC IMPROVEMENTS ASSOCIATED WITH THIS SUBDIVISION, THEREON ARE HEREBY APPROVED AND ACCEPTED BY THE COMMISSIONERS OF WEBER COUNTY, UTAH. SIGNED THIS _____ DAY OF _____, 20____.

CHAIRMAN, WEBER COUNTY COMMISSION

ATTEST

WEBER COUNTY SURVEYOR
I HEREBY CERTIFY THAT THE WEBER COUNTY SURVEYOR'S OFFICE HAS REVIEWED THIS PLAT FOR MATHEMATICAL CORRECTNESS, SECTION CORNER DATA, AND FOR HARMONY WITH LINES AND MONUMENTS ON RECORD IN COUNTY OFFICES. THE APPROVAL OF THIS PLAT BY THE WEBER COUNTY SURVEYOR DOES NOT RELIEVE THE LICENSED LAND SURVEYOR WHO EXECUTED THIS PLAT FROM THE RESPONSIBILITIES AND/OR LIABILITIES ASSOCIATED THEREWITH. SIGNED THIS _____ DAY OF _____, 20____.

WEBER COUNTY SURVEYOR

WEBER COUNTY ATTORNEY
I HAVE EXAMINED THE FINANCIAL GUARANTEE AND OTHER DOCUMENTS ASSOCIATED WITH THIS SUBDIVISION PLAT, AND IN MY OPINION THEY CONFORM WITH THE COUNTY ORDINANCE APPLICABLE THERETO AND NOW IN FORCE AND AFFECT. SIGNED THIS _____ DAY OF _____, 20____.

WEBER COUNTY ATTORNEY

WEBER-MORGAN HEALTH DEPARTMENT
I HEREBY CERTIFY THAT THE SOILS, PERCOLATION RATES, AND SITE CONDITIONS FOR THIS SUBDIVISION HAVE BEEN INVESTIGATED BY THIS OFFICE AND ARE APPROVED FOR ON-SITE WASTEWATER DISPOSAL SYSTEMS. SIGNED THIS _____ DAY OF _____, 20____.

WEBER-MORGAN HEALTH DEPARTMENT

Webber County Recorder
Entry No. _____ Fee Paid _____
Filed For Record _____
And Recorded, _____
At _____ In Book _____
Of The Official Records, Page _____
Recorded For: _____

Webber County Recorder

Deputy.