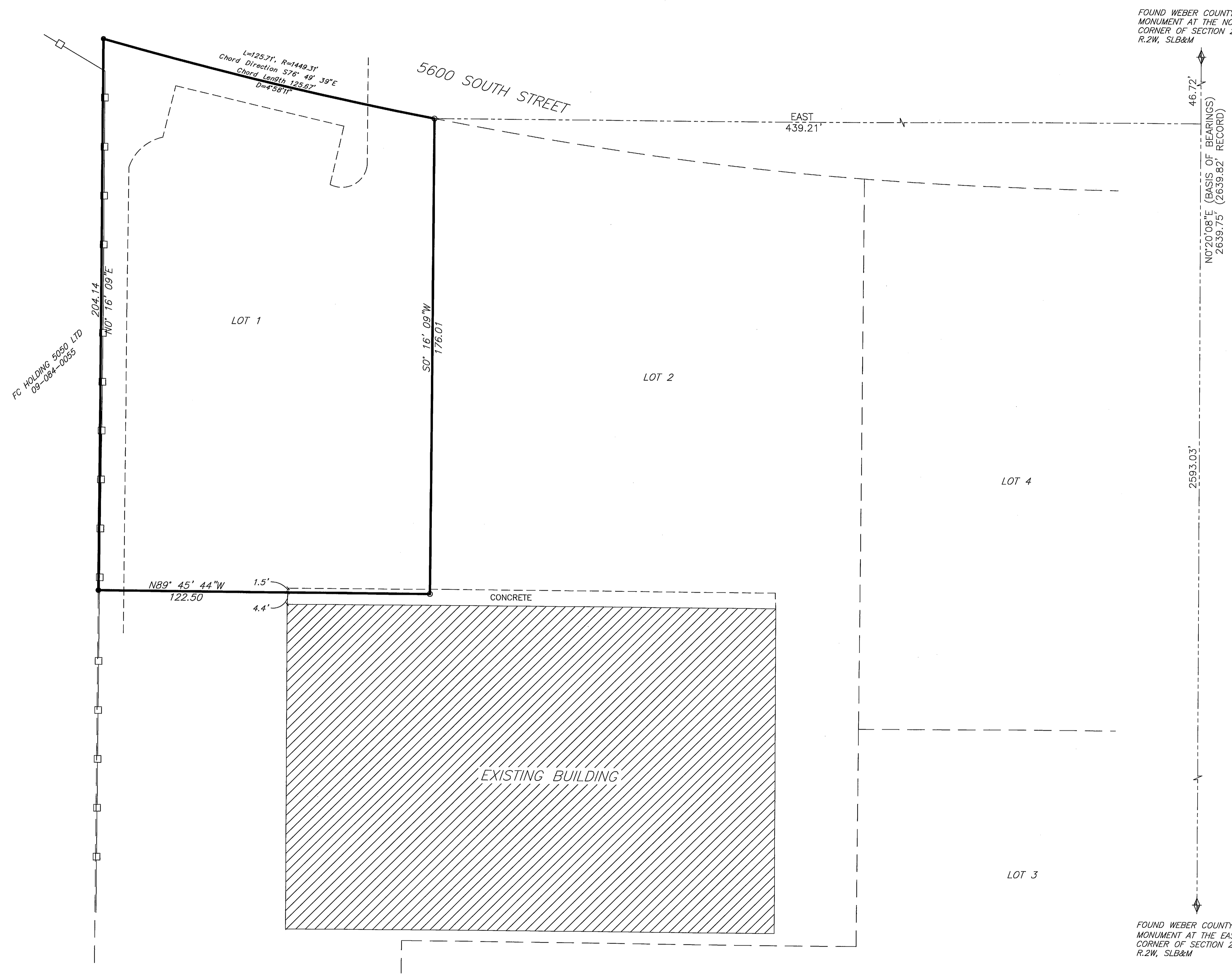


# RECORD OF SURVEY

LOT 1 ROY CROSSROADS COMMERCIAL SUBDIVISION  
WEBER COUNTY, UTAH  
JUNE 2015



### LEGEND

- $\nabla$  = SECTION CORNER
  - o = FOUND REBAR AND CAP STAMPED H&A ENG PLS 166385
  - = SET 5/8" REBAR AND PLASTIC CAP STAMPED "REEVE & ASSOCIATES"
  - = SET NAIL IN CONCRETE
  - = EXISTING BUILDING
  - = BOUNDARY LINE
  - = EXISTING BLOCK WALL
  - = EXISTING CURBING
  - = ADJOINING PROPERTY
  - = EASEMENTS
  - = SECTION TIE LINE
  - = PUBLIC UTILITY EASEMENT
- P.U.E.
- Scale: 1" = 20'
- 20' 0 20' 40' 60'

FOUND WEBER COUNTY  
MONUMENT AT THE NORTHEAST  
CORNER OF SECTION 21, T.5N.,  
R.2W, SLB&M

46.72'  
NO20'08"E (BASIS OF BEARINGS)  
2639.75' (2639.82' RECORD)

### BASIS OF BEARINGS

THE BASIS OF BEARINGS FOR THIS SURVEY IS THE SECTION LINE BETWEEN THE NORTHEAST CORNER AND THE EAST  $\frac{1}{4}$  CORNER OF SECTION 21 TOWNSHIP 5 NORTH RANGE 2 WEST, SALT LAKE BASE AND MERIDIAN, SHOWN HEREON AS 50'20'08"W.

### NARRATIVE

THE PURPOSE OF THIS SURVEY IS TO MARK THE PROPERTY CORNERS AS SHOWN. THE CORNERS WERE MARKED AS INDICATED HEREON. THE BOUNDARY WAS DETERMINED BY RETRACING THE OFFICIAL PLAT OF THE ROY CROSSROADS COMMERCIAL SUBDIVISION AS RECORDED IN THE WEBER COUNTY RECORDER'S OFFICE IN BOOK 50, PAGE 54. MONUMENTS USED IN THE ORIGINAL SUBDIVISION WERE FOUND AS SHOWN, AS WELL AS A REBAR AND CAP SET BY THE SURVEYOR OF SAID SUBDIVISION.

### BOUNDARY DESCRIPTION

PART OF THE NORTHEAST QUARTER OF SECTION 21, TOWNSHIP 5 NORTH, RANGE 2 WEST, SALT LAKE BASE AND MERIDIAN, ROY CITY, WEBER COUNTY, UTAH.

ALL OF LOT 1, ROY CROSSROADS COMMERCIAL SUBDIVISION, AS RECORDED IN BOOK 50 PAGE 54 IN THE WEBER COUNTY RECORDER'S OFFICE.

### SURVEYOR'S CERTIFICATE

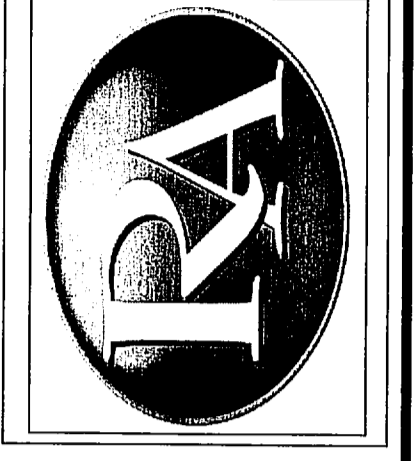
I, TREVOR J. HATCH, DO HEREBY CERTIFY THAT I AM A PROFESSIONAL LAND SURVEYOR IN THE STATE OF UTAH IN ACCORDANCE WITH TITLE 58, CHAPTER 22, PROFESSIONAL ENGINEERS AND LAND SURVEYORS ACT; AND THAT I HAVE COMPLETED A SURVEY OF THE PROPERTY DESCRIBED ON THIS PLAT IN ACCORDANCE WITH SECTION 17-23-17 AND HAVE VERIFIED ALL MEASUREMENTS, AND HAVE PLACED MONUMENTS AS REPRESENTED ON THIS PLAT.

SIGNED THIS 8<sup>th</sup> DAY OF June, 2015



FOUND WEBER COUNTY  
MONUMENT AT THE EAST  $\frac{1}{4}$   
CORNER OF SECTION 21, T.5N.,  
R.2W, SLB&M

**Reeve & Associates, Inc.**  
800 CHAMBERS STREET SUITE 14  
AND TOWNSEND • CIVIL ENGINEERS • LAND SURVEYORS  
TEL: (801) 621-3100 FAX: (801) 621-2666 www.reeve-associ.com  
TRAFFIC ENGINEERS • ENVIRONMENTAL ENGINEERS • LANDSCAPE ARCHITECTS



REVISIONS	DESCRIPTION

**RECORD OF SURVEY**  
LOT 1 ROY CROSSROADS COMMERCIAL SUBDIVISION  
WEBER COUNTY, UTAH

**MRF FAMILY LIMITED**

**Project Info.**  
Surveyor: T. HATCH  
Designer: \_\_\_\_\_  
Begin Date: 6-3-15  
Name: MRF FAMILY ROY BOUNDARY  
Scale: 1"=20'  
Checked: \_\_\_\_\_  
Number: 6575-02

Sheet 1 of 1  
Date: JUN 08 2015  
005232