

LEGEND

—C—	Centerline	TA	Top of Asphalt
—UGT—	Buried Telephone line	EA	Edge of Asphalt
—OHT—	Overhead Telephone line	NG	Natural Ground
—OHP—	Overhead Power line	LG	Lip of Gutter
—UGP—	Power line	SP	Service Pole
—S—	Sanitary Sewer line	LP	Light Pole
—W—	Culinary Water line	PP	Power Pole
—G—	Gas line	TP	Telephone Pole
—SD—	Storm Drain line	PH	Fire Hydrant
—SW—	Secondary Waterline	DIT	Flowline of Ditch
—LD—	Land Drain line	TOE	Toe of Slope
—IW—	Irrigation Waterline	TOP	Top of Slope
—X—X—	Fence	CO	Cleanout
—P—	Power Pole	FC	Fence
+	Post	DMH	Drain Manhole
⊕	Water Meter	Flowline	Spot Elevation
⊙	Gas Meter	x99.00	Contour
⊕	Telephone Box		Asphalt
⊕	Sewer Manhole		Concrete
⊕	Drain Manhole		Building
⊕	Water Manhole		Catch Basin
⊕	Cleanout Box		
SW	Sidewalk		
GAS	Gas line Marker	C.M.F.	Corrugated Metal Pipe
GUY	Guy Wire	R.C.P.	Reinforced Concrete Pipe
BLDG	Building Corner	CONC	Edge of Concrete
NG	Natural Ground	RWALL	Retaining Wall
⊕	Fire Hydrant	SMH	Sewer Manhole
⊕	Water Valve	WV	Water Valve
⊕	Light Pole	CB	Catch Basin
⊕	Power Pole w/guy	DV	Drain Manhole
⊕	Deciduous Tree	TC	Top of Curb
⊕	Coniferous Tree		

DESCRIPTION

A part of Lot 8, Pleasant Valley Estates - Phase 1, South Ogden City, Weber County, Utah.

Beginning at the Northwest corner of said lot 8, running thence South 63°00'00" East 120.00 feet; thence South 13°44'54" West 130.13 feet; thence North 67°43'28" West 49.82 feet; thence North 49°18'52" West 49.82 feet; thence North 54°08'11" West 56.26 feet; thence North 27°00'00" West 110.00 feet to the point of beginning.

Contains: 16,389 sq. ft.

NARRATIVE

This Property Survey was requested by Mr. Martin O'Loughlin for the purpose of establishing the boundaries of the Property.

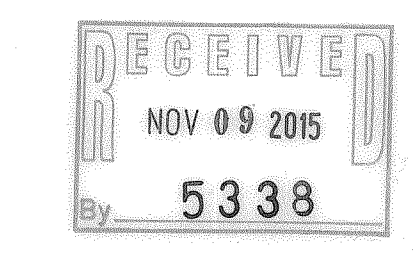
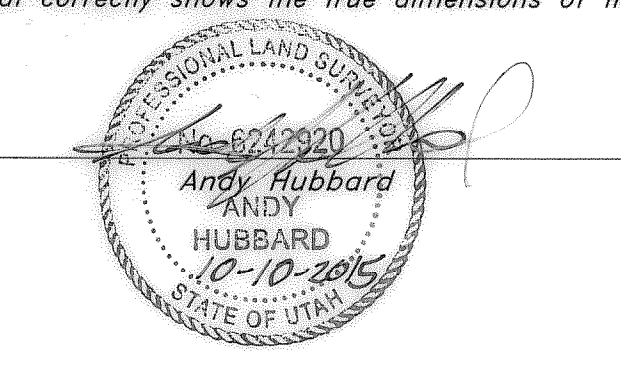
Brass Cap Monuments were found in intersection of 5750 South and 1075 East and 5700 South and 1075 East of Section 21, T5N, R1W, SLB&M, U.S.

Basis of Bearings for this survey is North 27°40'05" East along a line between said Brass Caps of 5750 South and 1075 East and 5700 South and 1075 East of Section 21.

Property corners were set as indicated.

SURVETOR'S CERTIFICATE

I, Andy Hubbard do hereby certify that I am a Registered Professional Land Surveyor, and that I hold Certificate No. 6242920, in accordance with Title 58, Chapter 22, of the Professional Engineers and Surveyors Licensing Act, and I have made a survey of the above described property according to Section 17-23-17 and that the above plot correctly shows the true dimensions of the property surveyed.



RECORD OF SURVEY
O'Loughlin - Lot 8
 1068 East 5750 South
 South Ogden City, Weber County, Utah
 A part of Section 21, T5N, R1W, SLB&M, U.S. Survey

GREAT BASIN ENGINEERING
 1475 EAST DUBEN UTAH 84403
 BAY 1801394-4515 SAC (601)522-1611 FAX (601)522-1611
 WWW.GREATBASINENGINEERING.COM

10 Oct, 2015
 SHEET NO. 1