

North Quarter Corner of Section 1
T6N, R1E, SL&M, U.S. Survey
(Found Brass Cap Monument)

2650.14' meas. (2649.06' Record)

16.21'
S0°12'00" W

Point of Beginning
Set Rebar & Cap

S 0°12'00" W

150.00' E
N 89°55'58" E

1900' North Street

16.21'
S 89°48'00" E meas. (S 89°09'29" E Record)

621.99'

Set Rebar & Cap

N 0°12'00" E

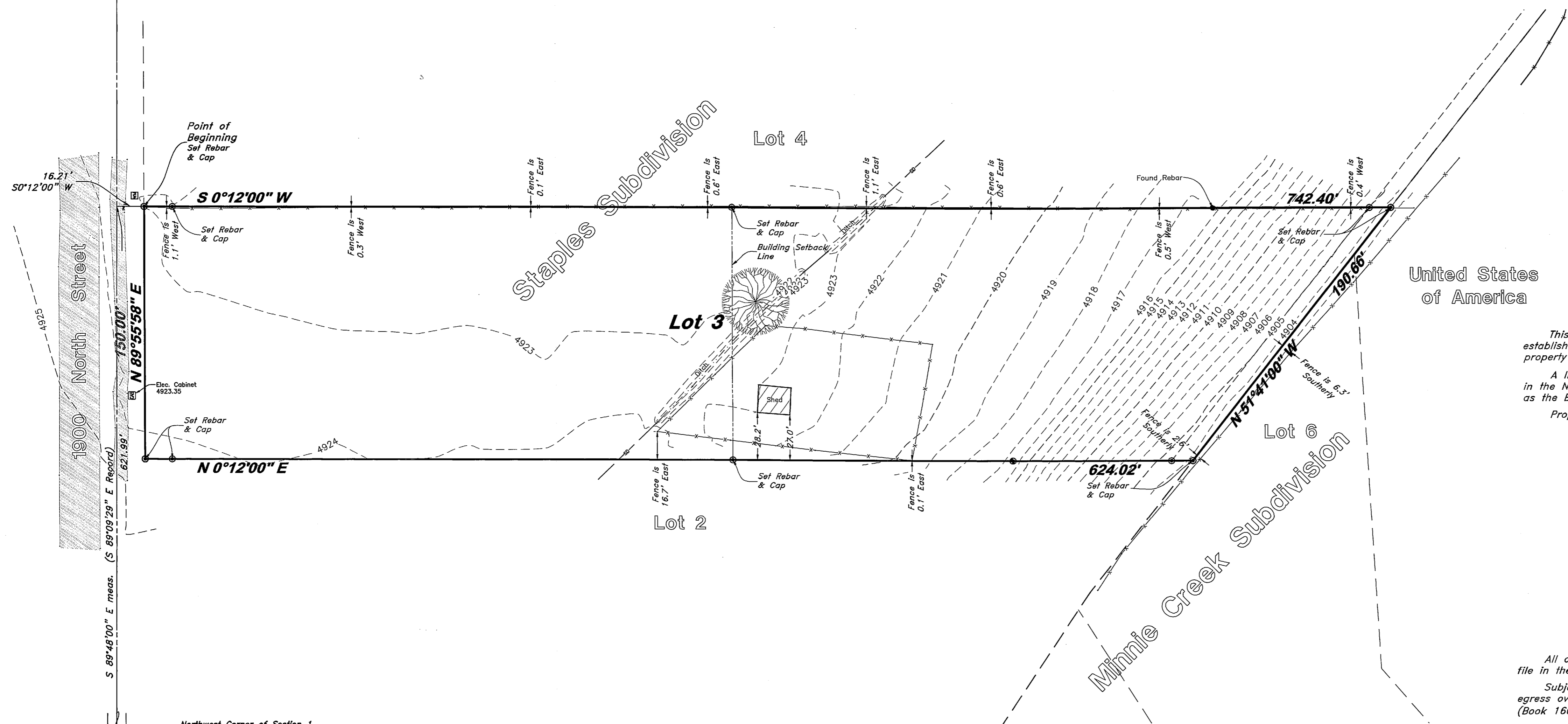
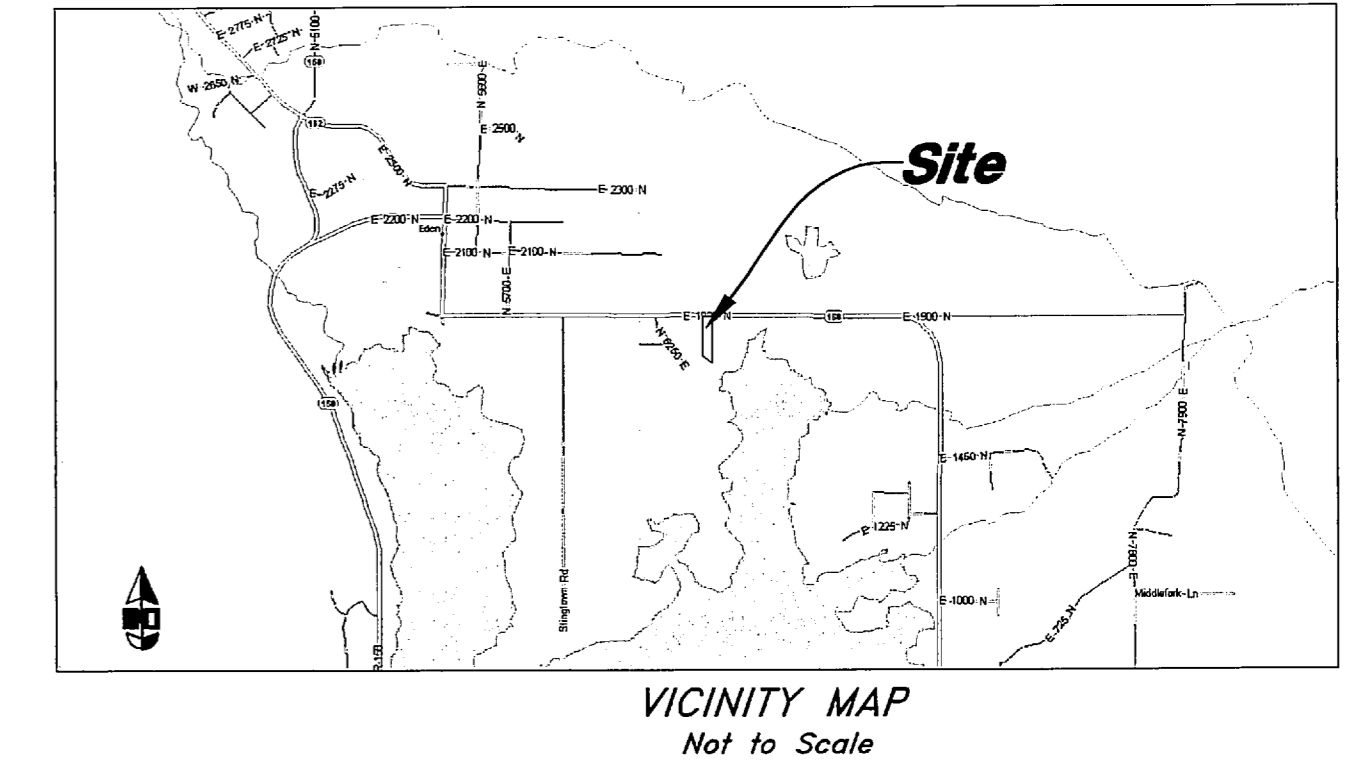
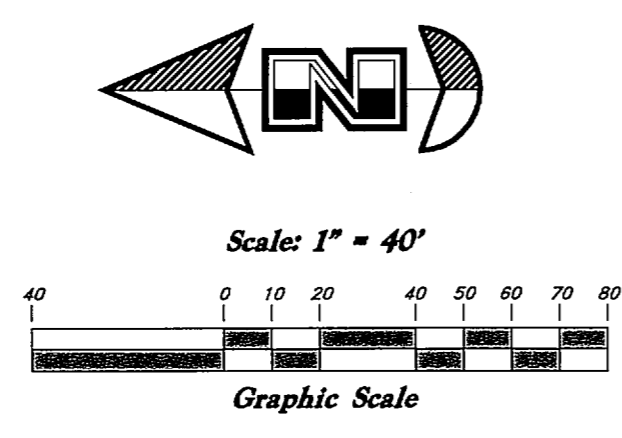
Northwest Corner of Section 1
T6N, R1E, SL&M, U.S. Survey
(Found Brass Cap Monument)

(S 89°15'50" E Record)

(S 89°45'55" E meas.)

2649.02' meas. (2644.85' Record)

North Quarter Corner of Section 2
T6N, R1E, SL&M, U.S. Survey
(Found Brass Cap Monument)



United States of America

NARRATIVE

This survey was requested by Mr. Garth Chandler for the purpose of establishing the boundary as well as depicting the current conditions of the property located in Eden City, Utah.

A line with the bearing of S 89°48'00" E between the monuments located in the Northwest Corner and the North Quarter Corner of Section 1 was used as the Basis of Bearings.

Property Corners were set as depicted on this survey.

BOUNDARY DESCRIPTION

All of Lot 3, Staples Subdivision, according to the Official Plat thereof, on file in the Weber County Records Office.

Subject to and together with a reserved right of way for ingress and egress over and across the Southerly 10 feet of the above described property (Book 1604 Page 458) and (Book 1605 Page 2894).

LEGEND

—C— Centerline	TA Top of Asphalt	C.M.P. Corrugated Metal Pipe
-UGT- Buried Telephone line	EA Edge of Asphalt	R.C.P. Reinforced Concrete Pipe
-OHT- Overhead Telephone line	NG Natural Ground	CONC Edge of Concrete
-OHP- Overhead Power line	LG Lip of Gutter	RWALL Retaining Wall
-GP- Power line	SP Service Pole	SMH Sewer Manhole
-S- Sanitary Sewer line	LP Light Pole	WV Water Valve
-W- Culinary Water line	PP Power Pole	CB Catch Basin
-G- Gas line	TP Telephone Pole	DV Diversion Box
-SD- Storm Drain line	FH Fire Hydrant	TC Top of Curb
-SW- Secondary Waterline	DIT Flowline of Ditch	SW Sidewalk
-LD- Land Drain line	TOE Top of Slope	GAS Gas line Marker
-IW- Irrigation Waterline	TOP Top of Slope	GUY Guy Wire
-X-X-X- Fence	CO Cleanout	BLDG Building Corner
• Post	FC Fence	NG Natural Ground
⊙ Water Meter	DMH Drain Manhole	WV Water Valve
⊙ Gas Meter	Flowline	⊙ Light Pole
⊙ Telephone Box	x99.00 Spot Elevation	⊙ Power Pole w/guy
⊙ Sewer Manhole	Contour	⊙ Deciduous Tree
⊙ Drain Manhole	Asphalt	⊙ Coniferous Tree
⊙ Water Manhole	Concrete	
⊙ Cleanout Box	Building	
	Catch Basin	

RECEIVED
JAN 4 2016
By 5391

SURVEYOR'S CERTIFICATE

I, Andy Hubbard do hereby certify that I am a Registered Professional Land Surveyor, and that I hold Certificate No. 6242920, in accordance with Title 58, Chapter 22, of the Professional Engineers and Surveyors Licensing Act, and I have made a survey of the above described property according to Section 17-23-17 and that the above plat correctly shows the true dimensions of the property surveyed.

12-1-2015
No. 6242920
Andy Hubbard

GREAT BASIN ENGINEERING

5746 SOUTH 1475 EAST OGDEN, UTAH 84403
MAIN (801)394-4515 SALC (801)392-7544
WWW.GREATBASINENGINEERING.COM

Topographic Survey

Chandler - Eden

6383 East 1900 North
Eden City, Weber County, Utah
A part of Section 1, T6N, R1E, SL&M, U.S. Survey

18 Nov, 2015

SHEET NO. **1** of 1

15N725