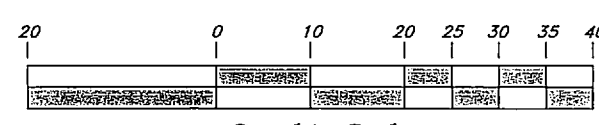


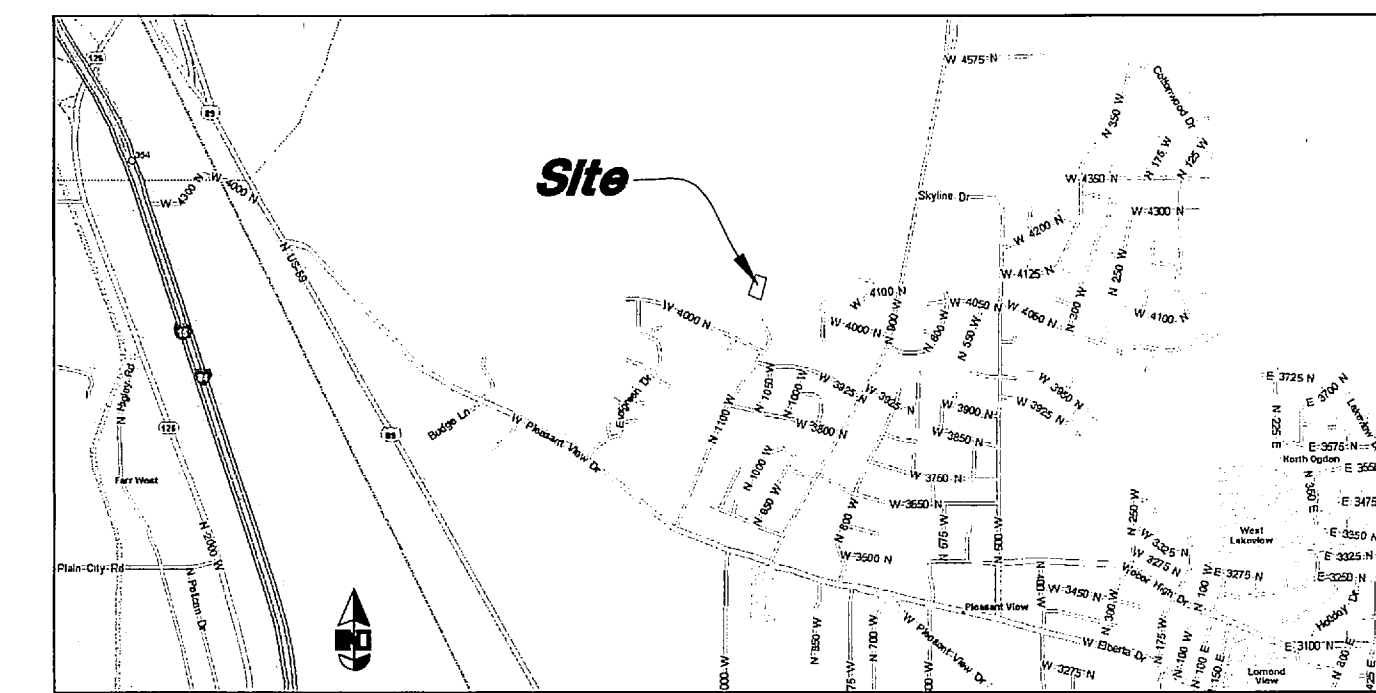
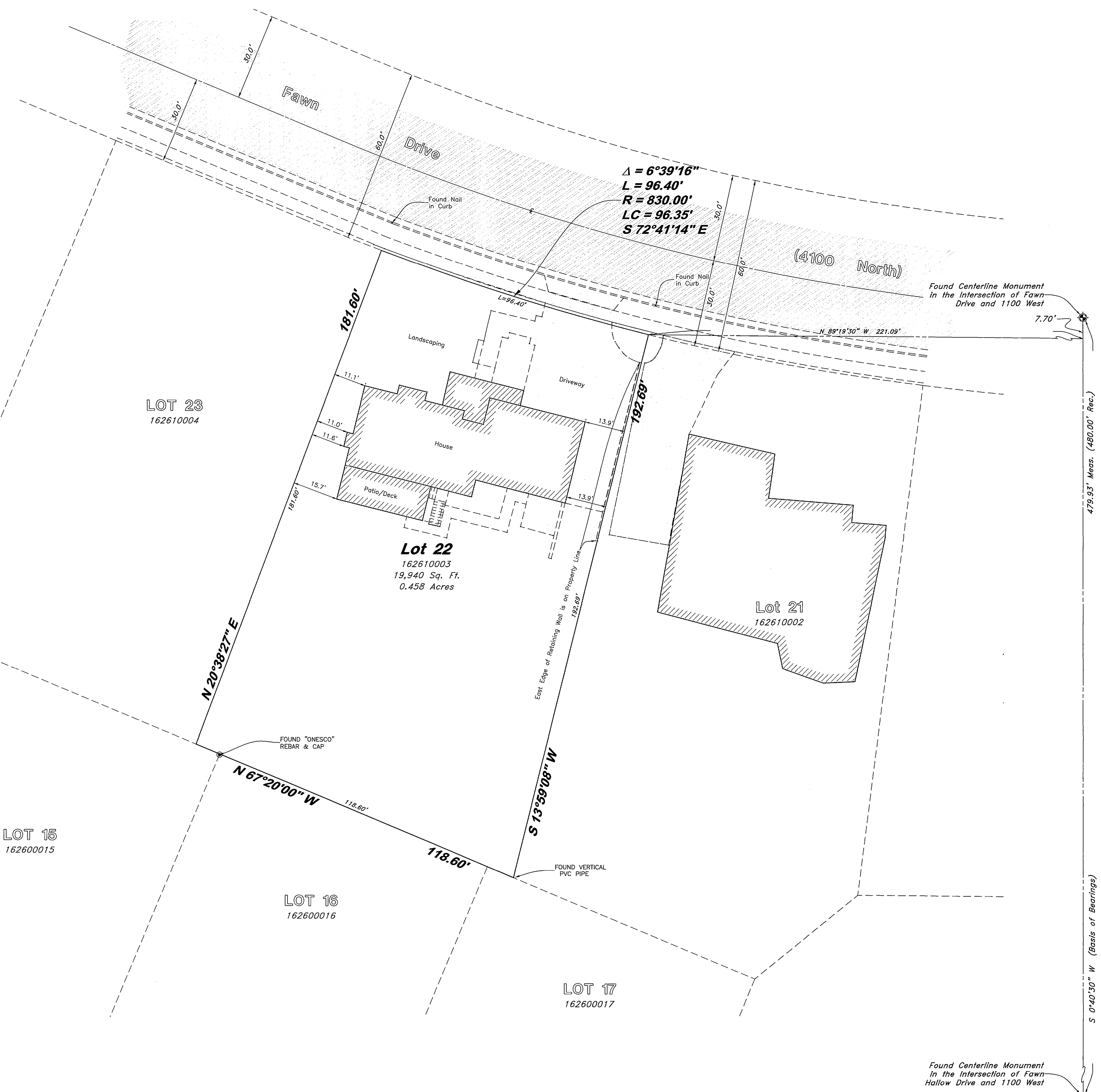


Scale: 1" = 20'



LEGEND

- C— Centerline
- UGT- Buried Telephone line
- OHT- Overhead Telephone line
- OHP- Overhead Power line
- UGP- Power line
- S- Sanitary Sewer line
- W- Cullinary Water line
- G- Gas line
- SD- Storm Drain line
- SW- Secondary Waterline
- LD- Land Drain line
- IW- Irrigation Waterline
- X-X- Fence
- Power Pole
- Post
- ⊕ Water Meter
- ⊕ Gas Meter
- ⊕ Telephone Box
- ⊕ Sewer Manhole
- ⊕ Drain Manhole
- ⊕ Water Manhole
- ⊕ Cleanout Box
- TA Top of Asphalt
- EA Edge of Asphalt
- NG Natural Ground
- LG Lip of Gutter
- SP Service Pole
- LP Light Pole
- PP Power Pole
- TP Telephone Pole
- TH Fire Hydrant
- DIT Flowline of Ditch
- TOE Toe of Slope
- TOP Top of Slope
- CO Cleanout
- FC Fence
- DMH Drain Manhole
- DMH Flowline
- x99.00 Spot Elevation
- Contour
- Asphalt
- Concrete
- Building
- Catch Basin
- C.M.P. Corrugated Metal Pipe
- R.C.P. Reinforced Concrete Pipe
- C.O.N.C. Edge of Concrete
- R.W.A.L.L. Retaining Wall
- S.M.H. Sewer Manhole
- W.V. Water Valve
- C.B. Catch Basin
- D.V. Diversion Box
- T.C. Top of Curb
- S.W. Sidewalk
- G.A.S. Gas line Marker
- G.U.Y. Guy Wire
- B.L.D.G. Building
- N.G. Natural Ground
- F.H. Fire Hydrant
- W.V. Water Valve
- L.P. Light Pole
- Power Pole w/guy
- Deciduous Tree
- Coniferous Tree



VICINITY MAP
Not to Scale

NARRATIVE

This Property Survey was requested by Mrs. Robin C. Scites of Relocation Properties Management L.L.C., for the purpose of completing a Mortgage Survey for the Property listed below.

A line between Monuments located in the Intersections of Fawn Drive & 1100 West Street and Fallow Way Street & 1100 West Street with a bearing of South 0°40'30" West was used as the Basis of Bearings for this Property Survey.

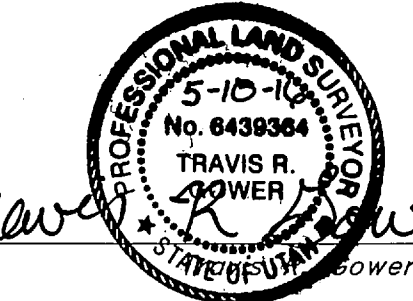
Property Corners were not set on this site per the owners request.

DESCRIPTION

All of Lot 22, Deer Crest Subdivision Phase 2, 1st Amendment, according to the Official Plat thereof.

SURVEYOR'S CERTIFICATION

I, Travis R. Gower do hereby certify that I am a Professional Land Surveyor, and that I hold Certificate No. 6439364, in accordance with Title 56, Chapter 22, of the Professional Engineers and Surveyors Licensing Act, and I have made a survey of the above described property according to Section 17-23-17 and that the above plat correctly shows the true dimensions of the property surveyed.



RECEIVED
JUL 29 2016
BY: 5511

| NO. | DATE | DESCRIPTION |
|-----|------|-------------|
| | | |
| | | |

GREAT BASIN ENGINEERING

5746 SOUTH 1475 EAST OGDEN, UTAH 84403
 MAIN (801)394-4515 S.L.L.C. (801)521-0822 FAX (801)392-7544
 WWW.GREATBASINENGINEERING.COM

Record of Survey

Parson - Pleasant View

1113 West Fawn Drive
 Pleasant View, Weber County, Utah
 A part of Section 19, T7N, R1W, SL&M, U.S. Survey

7 Mar, 2016
 SHEET NO.
1
 16N303