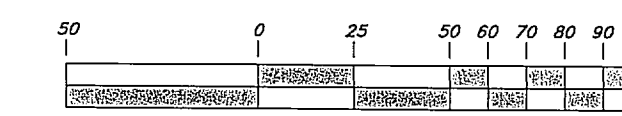


Scale: 1" = 50'



### Legend

(Note: All items may not appear on drawing)

San Sewer Manhole	⊙	Storm Drain Manhole	⊙	DMH	⊙
Water Manhole	⊙	Sewer Manhole	⊙	SMH	⊙
Storm Drain Manhole	⊙	Irrigation Manhole	⊙	IMH	⊙
Gas Manhole	⊙	Top of Wall	—	TWL	—
Electrical Manhole	⊙	Top of Walk	—	TW	—
Telecommunications Manhole	⊙	Top of Concrete	—	TCN	—
Catch Basins	⊙	Natural Ground	—	NG	—
Fire Hydrant	⊙	Finish Grade	—	FG	—
Exist. Fire Contour	—	Fire Department Connection	—	FDC	—
Exist. Water Valve	—	Finish Contour	—	90	—
Water Valve	—	Exist. Contour	—	95.337A	—
Sanitary Sewer	—	Exist. Grade	—	95.721A	—
Irrigation Water	—	Ridge Line	—	R	—
Gas Line	—	Direction of Flow	—	—	—
Irrigation Line	—	Existing Asphalt	—	—	—
Storm Drain	—	Concrete	—	—	—
Telephone Line	—	Spill	—	—	—
Secondary Waterline	—	Curb & Gutter	—	—	—
Power Line	—	Gas Meter	—	—	—
Fire Line	—	Telephone Box	—	—	—
Land Drain	—	Power Line	—	—	—
Utility Pole	—	Fiber Optic Line	—	—	—
Utility Pole w/guy	—	Power Pole	—	—	—
Light Pole	—	Centerline	—	—	—
Fence	—	Existing Building	—	—	—
Flowline of ditch	—	Set Nail & Washer	—	—	—
Overhead Power line	—	Set Rebar & Cap	—	—	—
Corrugated Metal Pipe	—	w/ Fencepost	—	—	—
Concrete Pipe	—	Set Hub & Tack	—	—	—
Reinforced Concrete Pipe	—	Found Monument	—	—	—
Ductile Iron	—	Found Section Corner	—	—	—
PVC	—	Radial Line	—	(Rad.)	—
Top of Asphalt	—	Non-Radial Line	—	(N/R)	—
Edge of Asphalt	—	Public Utility Easement	—	P.U.E.	—
Centerline	—	Ogden City Surveyor	—	O.C.S.	—
Flowline	—	Weber County Surveyor	—	W.C.S.	—
Finish Floor	—				
Top of Curb	—				
Electrical Box	—				
Catch Basin	—				
Sewer Manhole	—				
Roof Drain	—				
Fire Hydrant	—				
Water Valve	—				
Storm Drain	—				
Water Manhole	—				

### AS-SURVEYED DESCRIPTION

A part of the Southwest Quarter corner of Section 36, Township 8 North, Range 1 West, Salt Lake Base and Meridian, U.S. Survey, Liberty City, Weber County, Utah.

Beginning at the Southwest Corner of Lot 18, Durfee Creek Estates No. 1, Weber County, Utah, being on the North line of 6925 North Street, and being 1619.23 feet due North and 113.27 feet due West from the South Quarter corner of said Section 36, said South Quarter Corner being 249.00 feet South 89°54'05" East from a Witness Corner found for said South Quarter Corner of Section 32, and running thence five (5) courses along said North line of 6925 North Street as follows: (1) South 79°20'00" West 256.74 feet to a point of curvature; (2) Southwesterly along the arc of a 727.85 foot Radius curve to the right a distance of 95.28 feet (Delta Angle equals 7°30'00", Center bears North 10°40'00" West, and Long Chord bears South 83°04'59" West 95.21 feet); (3) South 86°50'01" West 80.92 feet to a point of curvature; (4) Northwesterly along the arc of a 732.21 foot Radius curve to the right a distance of 142.70 feet (Delta angle equals 11°10'00", Center bears North 3°10'00" West, and Long Chord bears North 87°35'00" West 142.48 feet); and (5) North 82°00'00" West 343.25 feet; thence North 8°00'00" East 311.14 feet; thence South 40°54'31" East 32.18 feet; thence North 15°24'20" East 72.39 feet; thence North 41°58'57" West 43.85 feet; thence North 38°27'24" West 9.00 feet; thence North 8°00'00" East 57.00 feet; thence North 89°00'00" East 652.10 feet to the Westerly line of said Durfee Creek Estates No. 1; thence South 17°05'57" East 45.44 feet along said Westerly line to the Northwest Corner of said Lot 18, Durfee Creek Estates No. 1; thence South 24°43'56" East 449.14 feet along said West line 449.14 feet to the point of beginning.

Contains: 8.721 acres

### NARRATIVE

This Property Survey was requested by Mrs. Martina Hutchinson, President of RMH Management Inc. for the purpose of reestablishing the boundaries of the Property prior to sale.

Brass Cap Monuments were found at the East Section Corner, Southeast Section Corner and Witness Corner monument.

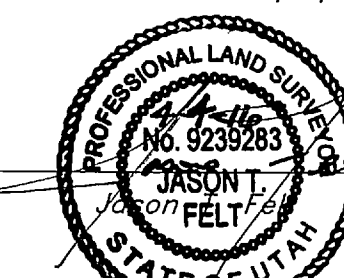
The South Quarter Corner was not found and its location was calculated from other found monuments and record information.

Basis of Bearings for this survey is South 89°18'57" West between said Southeast Section Corner and Witness Corner Monument, as shown here on. Durfee Creek Estates No. 1, 2A, 2B, and 2C Subdivision Plats were used as reference for this Survey.

Property corners are set as indicated.

### SURVEYOR'S CERTIFICATE

I, Jason T. Felt do hereby certify that I am a Professional Land Surveyor, and that I hold Certificate No. 9239283, in accordance with Title 58, Chapter 22, of the Professional Engineers and Surveyors Licensing Act, and I have made a survey of the above described property according to Section 17-23-17 and that the above plat correctly shows the true dimensions of the property surveyed.



RECEIVED  
AUG 15 2016  
BY: 5524

**GREAT BASIN ENGINEERING**

5746 SOUTH 1475 EAST OGDEN, UTAH 84403  
 MAIN (801)394-4515 S.L.C. (801)521-0222 FAX (801)392-7544  
 WWW.GREATBASINENGINEERING.COM

**Record of Survey**

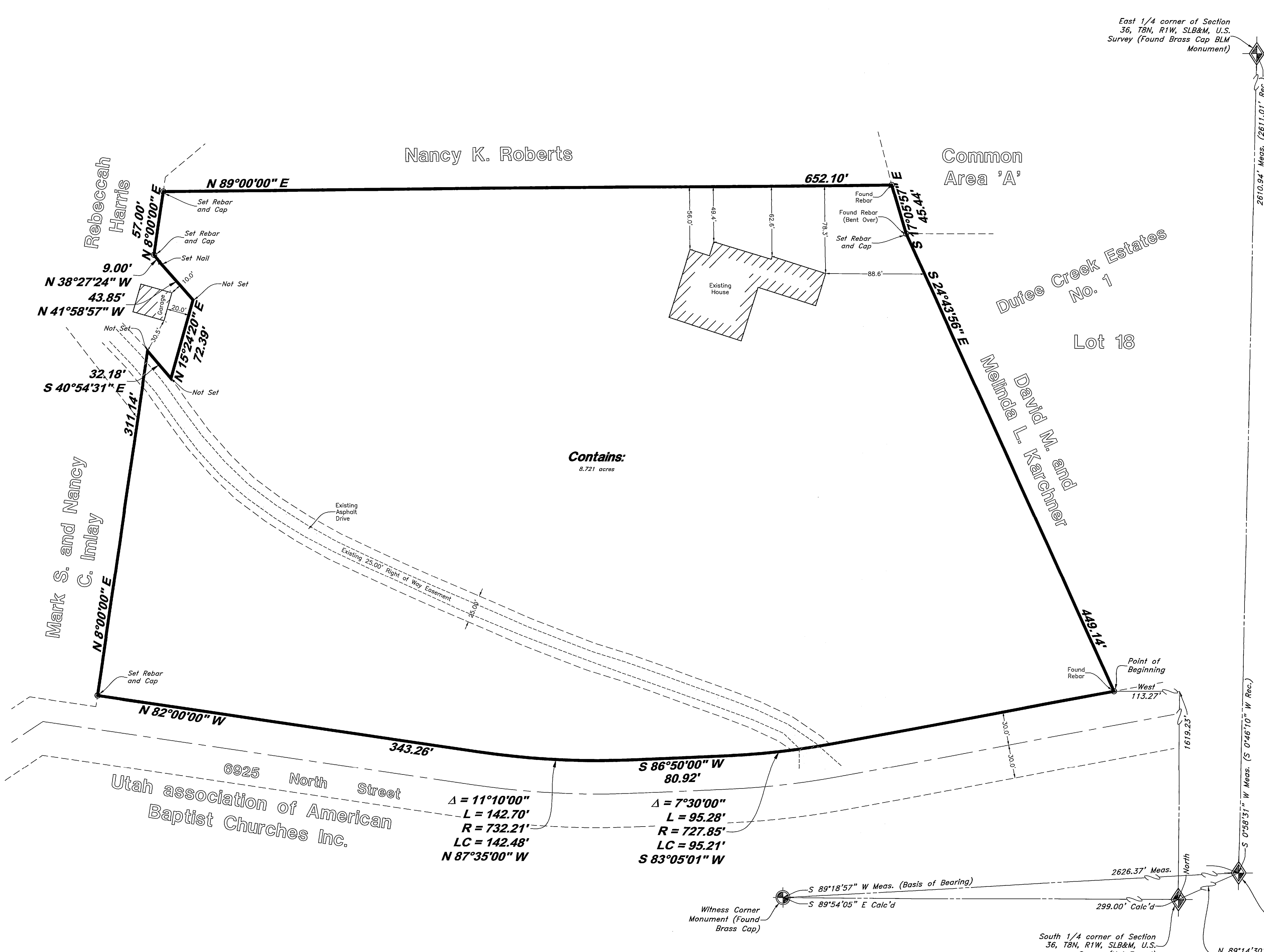
**RMH Management Inc. - Liberty**

1820 East 6925 North  
 Liberty City, Weber County, Utah  
 A part of Section 36, T8N, R1W, SLB&M, U.S. Survey

08 Feb, 2016

SHEET NO. **1**

161806



Contains: 8.721 acres

$\Delta = 11^{\circ}10'00''$   
 $L = 142.70'$   
 $R = 732.21'$   
 $LC = 142.48'$   
 $N 87^{\circ}35'00'' W$

$\Delta = 7^{\circ}30'00''$   
 $L = 95.28'$   
 $R = 727.85'$   
 $LC = 95.21'$   
 $S 83^{\circ}05'01'' W$

Witness Corner Monument (Found Brass Cap)

South 1/4 corner of Section 36, T8N, R1W, SLB&M, U.S. Survey (Not Found)

Southeast corner of Section 36, T8N, R1W, SLB&M, U.S. Survey (Found Brass Cap BLM Monument)

N 89°14'30" E 2626.36' Calc'd (2629.20 Rec.)

East 1/4 corner of Section 36, T8N, R1W, SLB&M, U.S. Survey (Found Brass Cap BLM Monument)

2610.94' Meas. (2611.01' Rec.)

S 0°58'31" W Meas. (S 0°46'10" W Rec.)