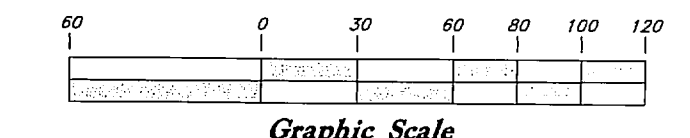


Scale: 1" = 60'



Legend

(Note: All items may not appear on drawing)

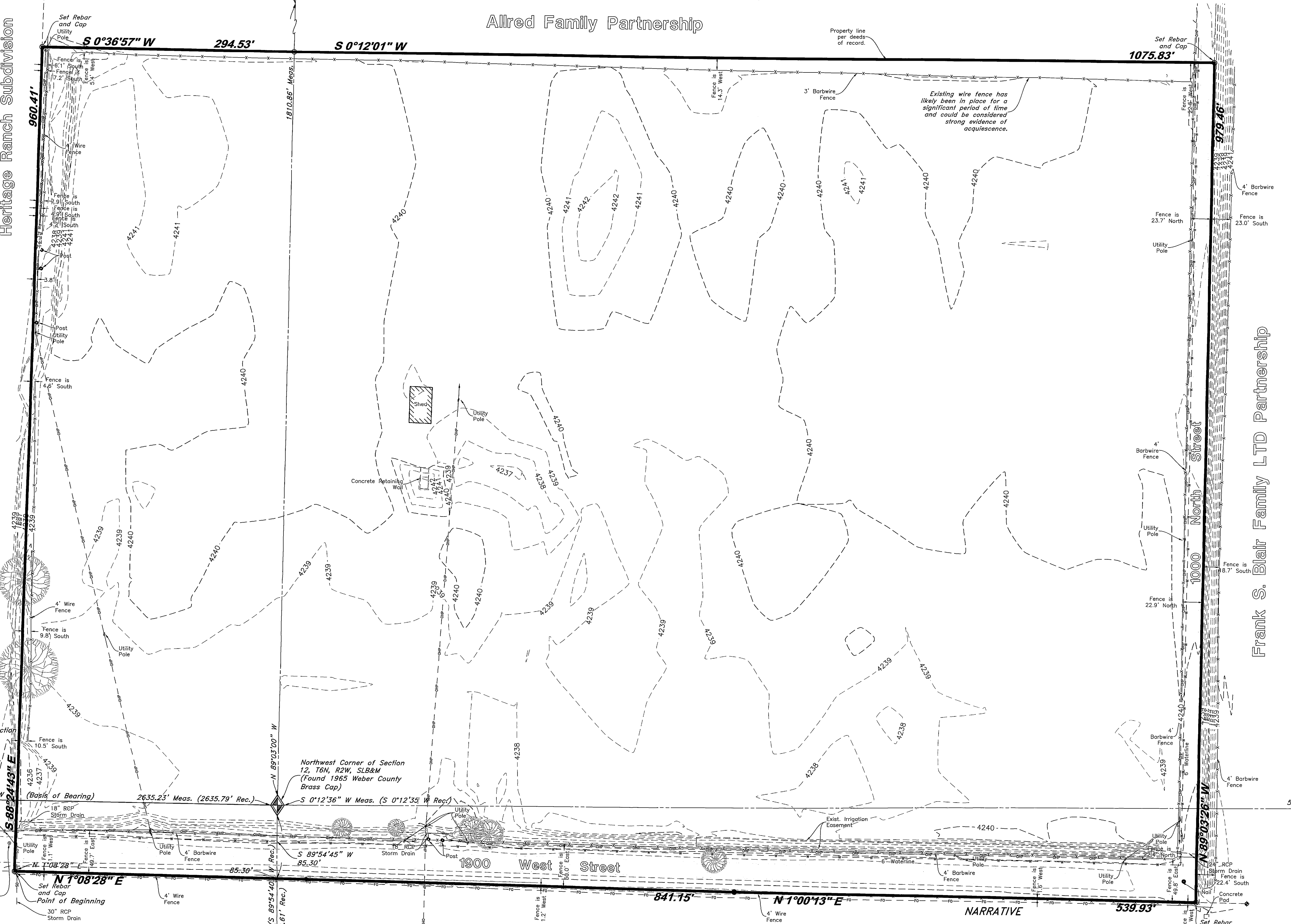
- San. Sewer Manhole
- Water Manhole
- Storm Drain Manhole
- Gas Manhole
- Electrical Manhole
- Catch Basins
- Exist. Fire Hydrant
- Fire Hydrant
- Exist. Water Valve
- Water Valve
- Sanitary Sewer
- Culinary Water
- Gas Line
- Irrigation Line
- Storm Drain
- Telephone Line
- Secondary Waterline
- Power Line
- Fire Line
- Land Drain
- Utility Pole
- Utility Pole w/guy
- Light Pole
- Fence
- Flowline of ditch
- Overhead Power line
- Corrugated Metal Pipe
- Concrete Pipe
- Reinforced Concrete Pipe
- Ductile Iron
- Polyvinyl Chloride
- Top of Asphalt
- Edge of Asphalt
- Centerline
- Flowline
- Finish Floor
- Top of Curb
- Electrical Box
- Catch Basin
- Sewer Manhole
- Road Drain
- Fire Hydrant
- Water Valve
- Storm Drain
- Water Manhole
- Storm Drain Manhole
- Sewer Manhole
- Irrigation Manhole
- Top of Wall
- Top of Walk
- Top of Concrete
- Natural Ground
- Finish Grade
- Fire Department Connection
- Finish Contour
- Exist. Contour
- Finish Grade
- Exist. Grade
- Ridge Line
- Direction of Flow
- Existing Asphalt
- Concrete
- Spill
- Curb & Gutter
- Gas Meter
- Telephone Box
- Power Line
- Fiber Optic Line
- Power Pole
- Centerline
- Existing Building
- Set Nail & Washer
- Set Rebar & Cap
- w/ Fencepost
- Set Hub & Tack
- Found Monument
- Found Section Corner
- Radial Line (Rad.)
- Non-Radial Line (N/R)
- Public Utility Easement (P.U.E.)
- Ogden City Surveyor (O.C.S.)
- Weber County Surveyor (W.C.S.)

Heritage Ranch Subdivision

Larry L. and Marry W. Allen

Frank S. Blair Family LTD Partnership

Allred Family Partnership



West Quarter Corner of Section 1, T6N, R2W, SLB&M (Found 2005 Weber County Brass Cap)

S 0°37'40" W 2635.25' Meas. (2635.79' Rec.)

S 22°21'25" E 42.70'

Reference Monument 1972 (Found)

N 1°08'28" E 85.30'

Set Rebar and Cap Point of Beginning

30" RCP Storm Drain

Exist. Sewer Manhole Top=4241.58 FL=4231.88 (6) 18" FL=4232.23 (3) 10" FL=4231.88 (W)

Northwest Corner of Section 12, T6N, R2W, SLB&M (Found 1965 Weber County Brass Cap)

S 0°12'36" W Meas. (S 0°12'35" W Rec.)

N 28°02'00" W 2697.86' Meas. (2696.61' Rec.)

South 1/4 Corner of Section 2, T6N, R2W, SLB&M (Found 1965 Weber County Brass Cap)

S 89°54'45" W Meas. (S 89°54'40" W Rec.)

2697.86' Meas. (2696.61' Rec.)

Southwest Corner of Section 12, T6N, R2W, SLB&M (Found 2008 Weber County Brass Cap)

S 5341.83' Meas. (5342.92' Rec.)

N 69°03'26" W 5341.83' Meas. (5342.92' Rec.)

18" RCP Storm Drain

Set Rebar and Cap

DESCRIPTION

A part of the Northwest Quarter of Section 12, Township 6 North, Range 2 West, Salt Lake Base and Meridian Farr West City, Weber County, Utah.

Beginning of a point which is 85.30 feet South 89°54'45" West to the East Right-of-Way of Highway 84 and 306.77 feet North 1°08'28" East along said Right-of-Way from the Northwest Quarter corner of said Section 12, and running thence South 88°24'43" East 960.41 feet; thence South 0°36'57" West 294.53 feet; thence South 0°12'01" West 1075.83 feet more or less to the center 1000 North Street; thence North 89°03'26" West 979.46 feet along said center line to the East Right-of-Way of Highway 89; thence North 1°00'13" East 539.93 feet along said Right-of-Way to Highway Right-of-Way marker 172; thence North 1°08'28" East 841.15 feet along said Right-of-Way to the point of beginning.

NARRATIVE

This Property Survey was requested by Mr. Mohammed Al-Tigari (#1159) for the purpose of reestablishing the boundaries of the Property prior to purchase and development.

Brass Cap Monuments were found at the West Quarter Corner of Section 1, T6N, R2W, SLB&M, U.S., South Corner of Section 11, T6N, R2W, SLB&M, U.S., Northeast Corner, and Southwest Corner, Section 12, T6N, R2W, SLB&M, U.S.

Basis of Bearings for this survey is South 0°37'40" West along a line between said West Quarter Corner and Northeast Corner of Section 12 as shown here on.

Property corners were set as indicated.

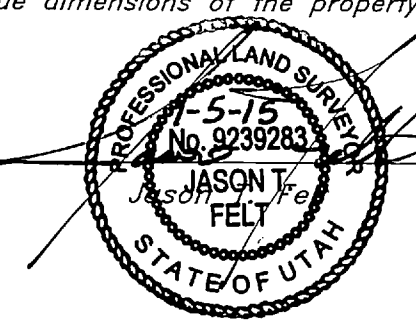
BENCHMARK

Top of 3" Brass Cap Monument Set on top center line of bridge abutment on West side of road Marking the Southeast Quarter Corner of Section 11 Township 6 North, Range 2 West, Salt Lake Base and Meridian, U.S. Survey.

Elevation 4243.72' (Weber County Survey)

SURVEYOR'S CERTIFICATE

I, Jason T. Fell do hereby certify that I am a Professional Land Surveyor, and that I hold Certificate No. 9239283, in accordance with Title 58, Chapter 22, of the Professional Engineers and Surveyors Licensing Act, and I have made a survey of the above described property according to Section 17-23-17 and that the above plat correctly shows the true dimensions of the property surveyed.



RECEIVED
AUG 15 2016
BY: 5527

Boundary & Topographic Survey

Islamic Center of Kuwait in Utah

Approximately 1000 North 1900 West
Farr West City, Weber County, Utah
A part of Section 11, T6N, R2W, SLB&M, U.S. Survey

01 Dec, 2015

SHEET NO. 1

15N824

GREAT BASIN

5746 SOUTH 1475 EAST OGDEN, UTAH 84403
MAIN (801)394-4515 S.L.C. (801)521-0222 FAX (801)592-7544
WWW.GREATBASINENGINEERING.COM

REV	DATE	DESCRIPTION

Contains: 30.161 acres

Elevation 4243.72' (Weber County Survey)