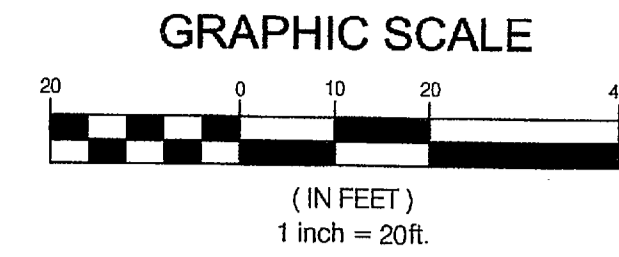
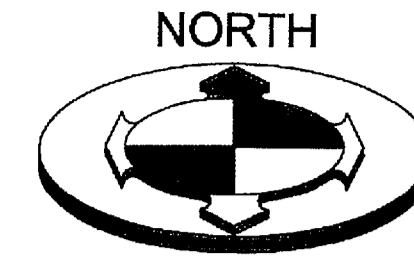


BOUNDARY AND TOPOGRAPHY SURVEY

LOCATED IN THE NORTHWEST QUARTER OF SECTION 33,
TOWNSHIP 6 NORTH, RANGE 1 WEST,
SALT LAKE BASE AND MERIDIAN
WEBER COUNTY, UTAH

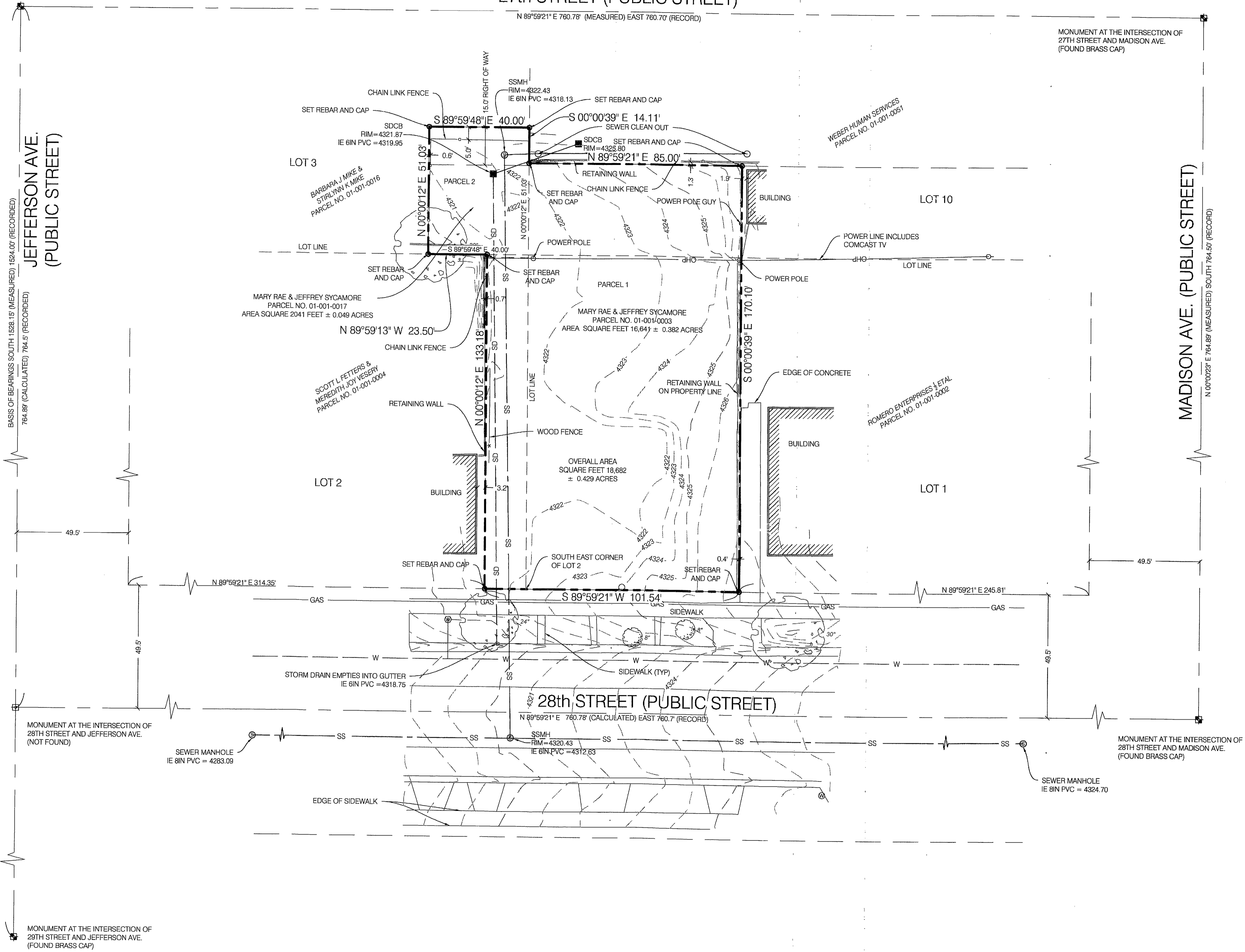


MONUMENT AT THE INTERSECTION OF
27TH STREET AND JEFFERSON AVE.
(FOUND BRASS CAP)

27th STREET (PUBLIC STREET)

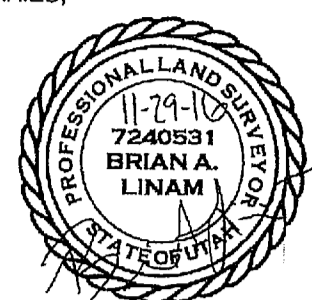
N 89°59'21" E 760.78' (MEASURED) EAST 760.70' (RECORD)

MONUMENT AT THE INTERSECTION OF
27TH STREET AND MADISON AVE.
(FOUND BRASS CAP)



SURVEYOR'S CERTIFICATE:

I, BRIAN A. LINAM, SALT LAKE CITY, UTAH, DO HEREBY CERTIFY THAT I AM A PROFESSIONAL LAND SURVEYOR AND THAT I HOLD LICENSE NO. 7240531 AS PRESCRIBED BY THE LAWS OF THE STATE OF UTAH; THAT I HAVE MADE A SURVEY OF THE FOLLOWING DESCRIBED PROPERTY; THAT THIS PLAT CORRECTLY SHOWS THE TRUE DIMENSIONS OF THE BOUNDARIES SURVEYED AND OF THE VISIBLE IMPROVEMENTS AFFECTING THE BOUNDARIES AND THEIR POSITION IN RELATIONSHIP TO SAID BOUNDARIES;



RECORD DESCRIPTION:

PARCEL 1) PART OF LOTS 1, 2, AND 10, BLOCK 1, PLAT A, OGDEN CITY SURVEY; BEGINNING 16.5 FEET WEST FROM THE SOUTHEAST CORNER OF SAID LOT 2; THENCE NORTH 132 FEET; THENCE EAST 16.5 FEET; THENCE NORTH 38 FEET; THENCE EAST 85 FEET; THENCE SOUTH 170 FEET, MORE OR LESS, TO SOUTH LINE OF SAID LOT; THENCE WEST 100 FEET, MORE OR LESS, TO BEGINNING.

PARCEL 2) PART OF LOT 3, BLOCK 1, PLAT A, OGDEN CITY SURVEY; BEGINNING AT THE SOUTHEAST CORNER OF SAID LOT 3, AND RUNNING THENCE NORTH 51 FEET; THENCE WEST 40 FEET; THENCE SOUTH 51 FEET; THENCE EAST 40 FEET TO THE PLACE OF BEGINNING.

TOGETHER WITH A RIGHT-OF-WAY 15 FEET IN WIDTH ON THE NORTH SIDE.

NARRATIVE OF BOUNDARY:

SCOPE
BENCHMARK ENGINEERING AND LAND SURVEYING, LLC WAS RETAINED BY JEFFREY SYCAMORE TO PERFORM A BOUNDARY SURVEY AS SHOWN HEREON.

BASIS OF BEARINGS
THE BASIS OF BEARINGS FOR THIS SURVEY IS SOUTH AS SHOWN HEREON.

LIST OF REFERENCED DOCUMENTS
R1) SPECIAL WARRANTY DEED ON FILE AT THE WEBER RECORDERS OFFICE RECORDED 09-MARCH-07 AS ENTRY #2247608.
R2) WARRANTY DEED ON FILE AT THE WEBER RECORDERS OFFICE AS ENTRY #1432710 AT BOOK 1828 ON PAGE 1383.
R3) WARRANTY DEED ON FILE AT THE WEBER RECORDERS OFFICE RECORDED 08-MARCH-07 AS ENTRY #2247253.
R4) WARRANTY DEED ON FILE AT THE WEBER RECORDERS OFFICE RECORDED 15-MAY-07 AS ENTRY #2283931.
R5) SPECIAL WARRANTY DEED ON FILE AT THE WEBER RECORDERS OFFICE RECORDED 25-FEBRUARY-99 AS ENTRY #1616055 AT BOOK 1994 ON PAGE 2286.

LEGEND:

- STREET MONUMENT AND LINE (FOUND)
- STREET MONUMENT AND LINE (NOT FOUND)
- PROPERTY CORNER AND LINE (PLAT NOTED)
- ADJOINING DEED LINE
- RIGHT-OF-WAY LINE
- STREET CENTERLINE
- CURB AND GUTTER
- EDGE OF CONCRETE
- CHAIN LINK FENCE
- WOOD FENCE
- MAIN WATER LINE
- SEWER LINE
- STORM DRAIN LINE
- OVERHEAD POWER LINE
- GAS LINE
- ⊙ POWER POLE AND POWER GUY
- ⊕ GAS LINE ACCESS
- ⊗ STORM DRAIN MANHOLE AND CATCH BASIN
- ⊕ WATER METER
- ⊙ SEWER MANHOLE

	NO.	DATE	DESCRIPTION		
DRAWN BY	CHECKED BY	FIELD CREW	DATE	PROJECT NO.	SCALE MEASURES IN CH ON FULL SIZE SHEETS. ADJUST ACCORDINGLY FOR REDUCED SIZE SHEETS.
JEFFREY SYCAMORE	BRIAN A. LINAM	KOZYS	11/06/2016	1609177	0.5
BENCHMARK ENGINEERING & LAND SURVEYING 9130 SOUTH STATE STREET SUITE # 100 SANDY, UTAH 84070 (801) 562-7192 www.benchmarkcivil.com					
JEFFREY SYCAMORE 644-650 28TH STREET OGDEN, UTAH					
PROJECT NO. 1609177					
BOUNDARY & TOPOGRAPHY SURVEY SVB.01 1 OF 1					

RECEIVED
BY: 5614