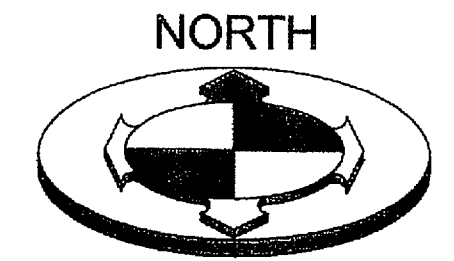






# ALT/NSPS LAND TITLE SURVEY

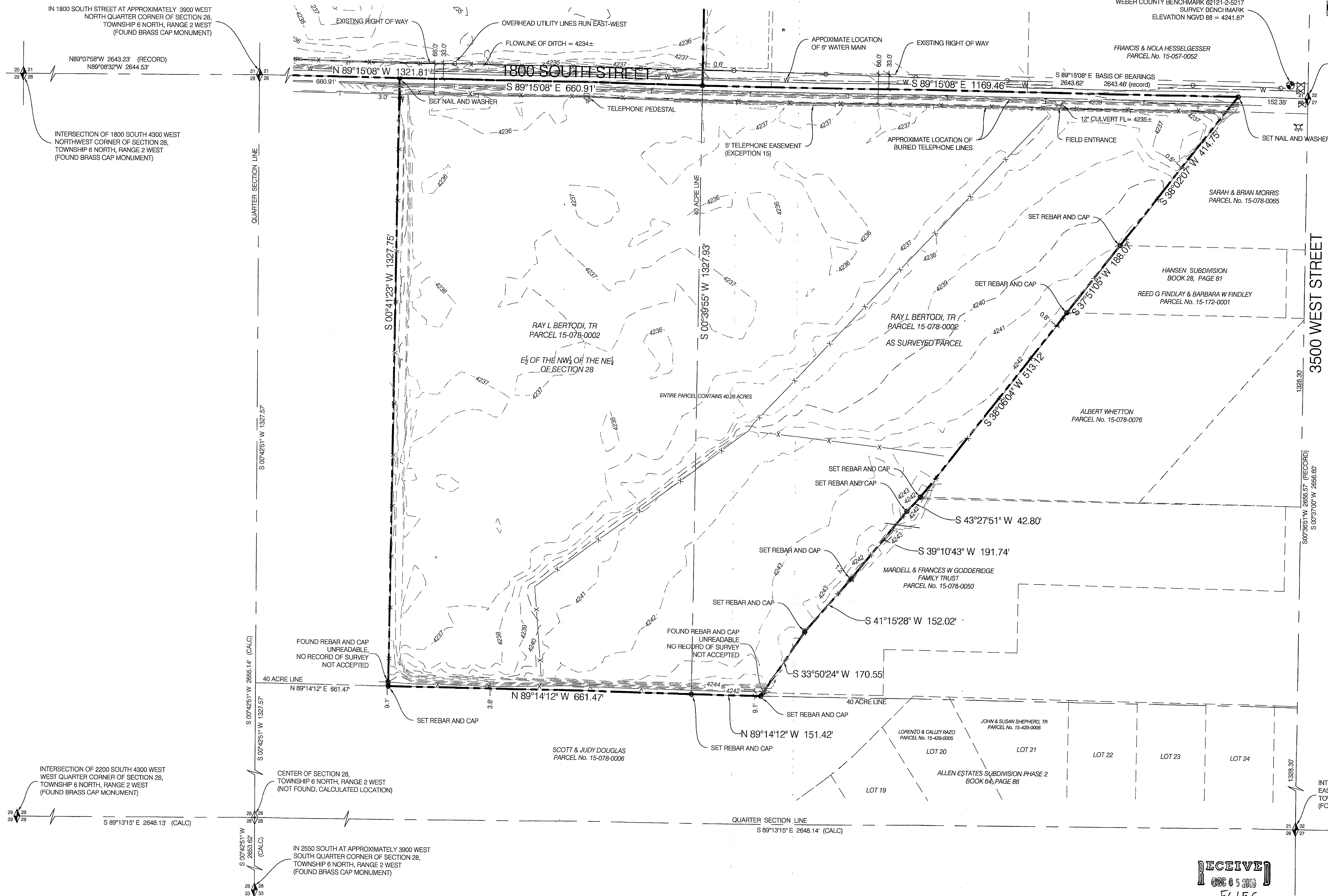
LOCATED IN THE SOUTHEAST QUARTER OF SECTION 21,  
AND THE NORTHEAST QUARTER OF SECTION 28,  
TOWNSHIP 6 NORTH, RANGE 2 WEST, S.L.B. & M.  
OGDEN CITY, WEBER COUNTY, UTAH



GRAPHIC SCALE

(IN FEET)  
1 inch = 100ft.

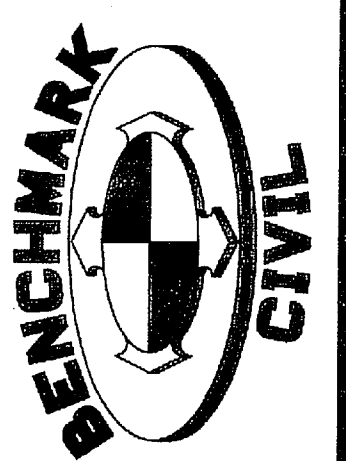
INTERSECTION OF 1800 SOUTH 3500 WEST  
NORTHEAST CORNER OF SECTION 28,  
TOWNSHIP 6 NORTH, RANGE 2 WEST  
(FOUND BRASS CAP MONUMENT)



NO.	DATE	DESCRIPTION

DRAWN BY: EAL  
 CHECKED BY: KJZ/JAC  
 FIELD CREW: KJZ/JAC  
 DATE: SEP. 9, 2016  
 DWG FILE: 1607138

**BENCHMARK ENGINEERING & LAND SURVEYING**  
 9139 SOUTH STATE STREET SUITE #100  
 SANDY, UTAH 84070 (801) 562-7162  
 www.benchmarkcivil.com



**RICE ASSET MANAGEMENT, LLC**  
 3701 WEST 1800 SOUTH  
 WEST WEBER, UTAH

PROJECT NO: 1607138  
**ALT/NSPS LAND TITLE SURVEY**  
 SVB.01  
 3 OF 3

RECEIVED  
 OCT 05 2016  
 BY: 5615C

