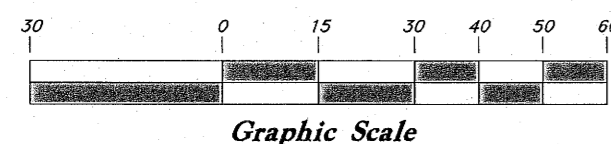


Scale: 1" = 30'



North 1/4 Corner of Section 1, T5N, R2W, SLB&M, U.S. Survey (Found Brass Cap Monument in April 2000)

2642.83' Meas. (2642.43 W.C.S.)

Northeast Corner of Section 1, T5N, R2W, SLB&M, U.S. Survey (Found Brass Cap Monument in April 2000)

Bernard G. Devlin Sr., Trustee

Buxton Investments Co.

Herbert W C Stolfus Jr & Joan L Stolfus

Craig J Minarik & WF Cynthia L

NARRATIVE

This survey was requested by Mr. Brian Snelson in behalf of Fidelity Self Storage for the purpose of establishing the Property corners and to see the difference in elevation between an existing storm drain and an existing sump on the adjoining parcel. Great Basin had done a survey on the Buxton Parcel to the North in April 200 (#83N033s). Two nails along with two rebars were found from this survey and a line bearing N 0°29'17" E between the two nails was used as the Basis of Bearings. All deed bearings were rotated 0°29'19" in a clockwise direction to comply with the County's State Plane Grid. The two South corners were monumented with Rebar and Great Basin Caps.

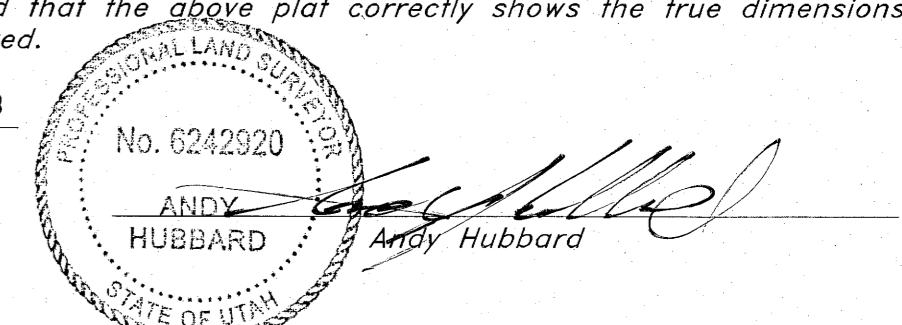
BOUNDARY DESCRIPTION

A part of the Northeast Quarter of Section 1, Township 5 North, Range 2 West, Salt Lake Base and Meridian, U.S. Survey; Beginning at a point which is 2490.00 feet North 89°30'43" West along the Section line and 276.32 feet South 0°29'17" West from the Northeast corner of said Northeast Quarter; running thence South 89°16'56" East 169.34 feet; thence South 0°37'11" West 35.94 feet; thence South 89°20'28" East 70.75 feet; thence South 0°29'17" West 299.60 feet; thence North 89°30'43" West 240.00 feet; thence North 0°29'17" East 336.43 feet to the point of beginning. Contains 1.793 Acres Subject to and together with the following described right of way for ingress and egress: Beginning at a point which is West 2490.0 feet and South 24.75 feet from the Northeast corner of said Section 1; running thence East 20.0 feet; thence South 800 feet; thence West 20.0 feet; thence North 800 feet to the point of beginning.

SURVEYOR'S CERTIFICATE

I, Andy Hubbard, do hereby certify that I am a Registered Professional Land Surveyor, and that I hold Certificate No. 6242920, in accordance with Title 58, Chapter 22, of the Professional Engineers and Surveyors Licensing Act, and I have made a survey of the above described property according to Section 17-23-17 and that the above plat correctly shows the true dimensions of the property surveyed.

Date 10-15-2008

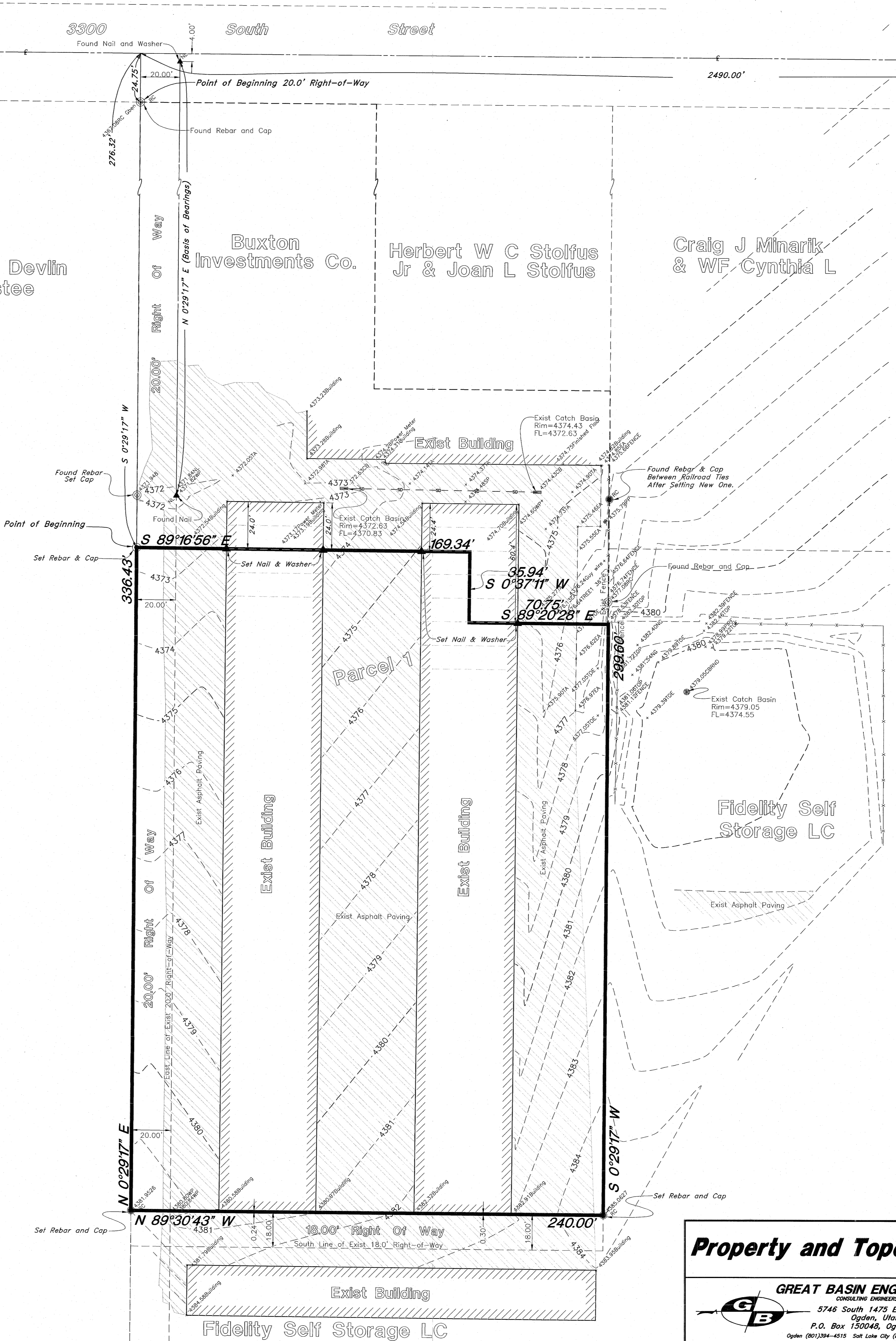


LEGEND

- Set Nail & Washer
Set Rebar & Cap w/ Fencapost
Set Hub & Tack
Monument to be set
(Rad.) Radial Line
(N/R) Non-Radial Line
Found Rebar & Cap

LEGEND

- Centerline
Buried Telephone line
Overhead Telephone line
Overhead Power line
Power line
Sanitary Sewer line
Culinary Water line
Gas line
Storm Drain line
Secondary Waterline
Land Drain line
Irrigation Waterline
Fence
Power Pole
Fast
Water Meter
Gas Meter
Telephone Box
Sewer Manhole
Drain Manhole
Water Manhole
Cleanout Box
TA Top of Asphalt
LA Edge of Asphalt
NG Natural Ground
LG Lip of Gutter
SP Service Pole
LP Light Pole
TP Telephone Pole
TH Fire Hydrant
TOE Toe of Slope
TOP Top of Slope
CO Cleanout
FC Fence
DMH Drain Manhole
x99.00 Spot Elevation
Contour
Asphalt
Concrete
Building
Catch Basin
C.M.P. Corrugated Metal Pipe
R.C.P. Reinforced Concrete Pipe
CONC Edge of Concrete
RWALL Retaining Wall
SMH Sewer Manhole
WV Water Valve
CB Catch Basin
DV Diversion Box
TC Top of Curb
SW Sidewalk
GAS Gas line Marker
GUY Guy Wire
BLDG Building Corner
NG Natural Ground
FH Fire Hydrant
WV Water Valve
LP Light Pole
Power Pole w/guy
Deciduous Tree
Coniferous Tree



Property and Topographic Survey

GREAT BASIN ENGINEERING NORTH
CONSULTING ENGINEERS AND SURVEYORS
5746 South 1475 East - Suite 200
Ogden, Utah 84403
P.O. Box 150048, Ogden, Utah 84415
Ogden (801)354-4515 Salt Lake City (801)521-0222 Fax (801)392-7544

SCALE: 1"=30'
DATE: 26 Aug, 2008
DRAWN: DH
REVISIONS: 29 Sep, 2008; 15 Oct, 2008
08N301-PS

Fidelity Self Storage
A part of the Northeast 1/4 of Section 1, T5N, R2W, SLB&M, U.S. Survey Ogden City, Weber County, Utah

RECEIVED
AUG 16 2017
BY: 5193

08N301