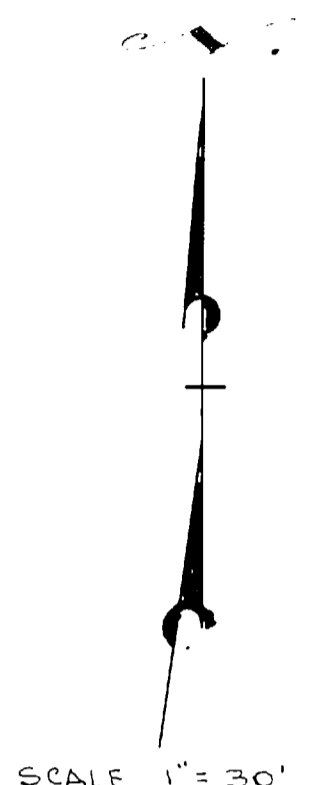
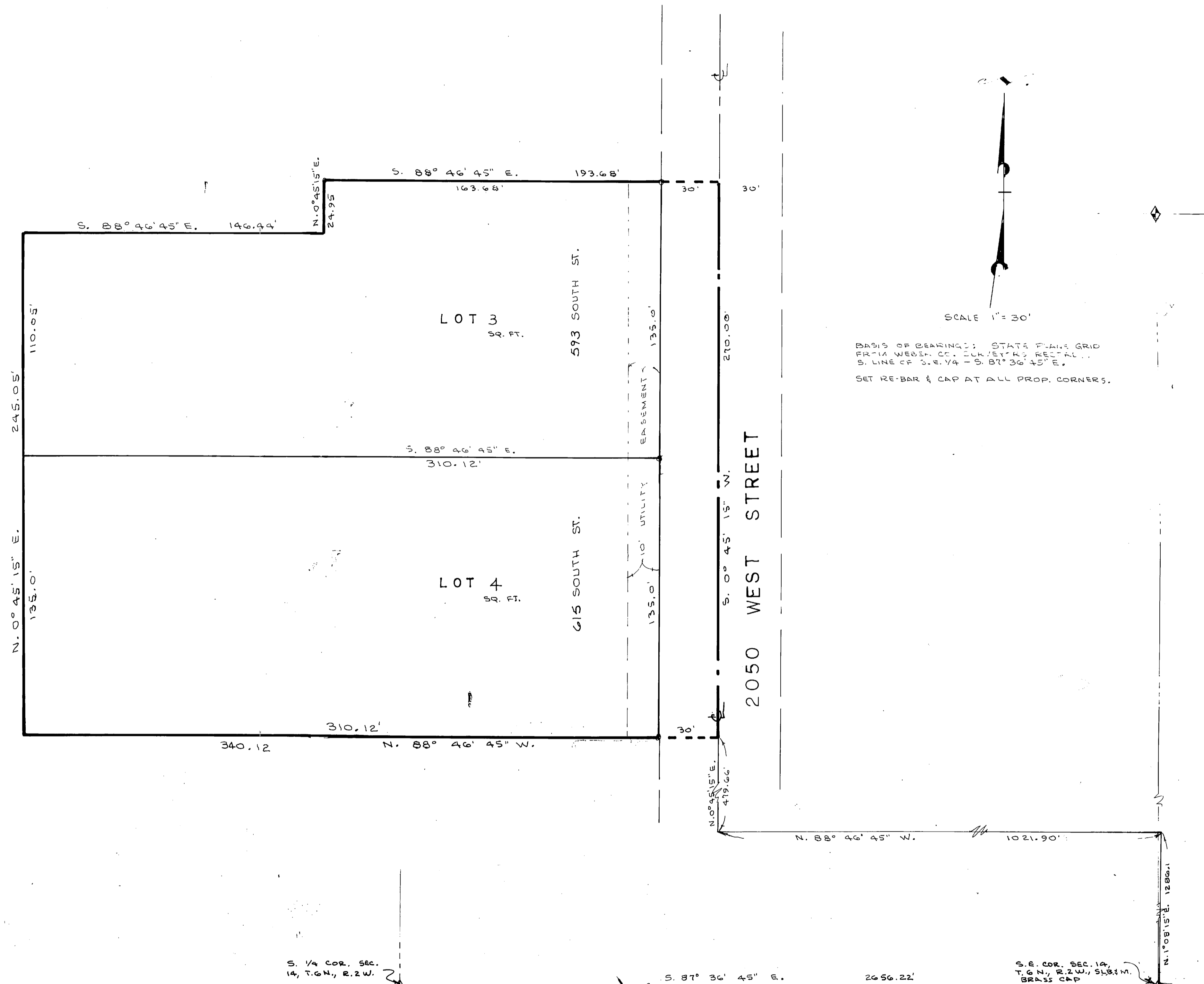


# MESSERLY SUBDIVISION NO. 4

PART OF THE S.E. 1/4 OF SEC. 14, T.6N., R.2 W., S.L.B.#M., U.S. SURVEY  
WEBER COUNTY, UTAH

AUGUST, 1991



BASES OF BEARING: STATE PLAIN GRID  
FR-14 WEBER CO. JULY 1987 RECAL...  
S. LINE OF S.E. 1/4 - 87° 36' 45" E.  
SET RE-BAR & CAP AT ALL PROP. CORNERS.

**BOUNDARY DESCRIPTION**  
PART OF THE S.E. 1/4 OF SECTION 14, T.6N., R.2 W., S.L.B.#M., U.S. SURVEY; BEGINNING AT A POINT 1286.4 FT. N. 1° 05' 15" E. ALONG THE CENTERLINE OF STATE HIGHWAY; N. 88° 46' 45" W. 1021.90 FT. AND N. 0° 45' 15" E. 479.66 FT. FROM THE S.E. CORNER OF SAID SECTION 14, AND RUNNING THENCE N. 88° 46' 45" W. 340.12 FT. THENCE N. 0° 45' 15" E. 245.05 FT. THENCE S. 88° 46' 45" E. 146.44 FT. THENCE N. 0° 45' 15" E. 24.95 FT. THENCE S. 88° 46' 45" E. 193.68 FT. THENCE S. 0° 45' 15" W. 270.0 FT. TO THE POINT OF BEGINNING.

**SURVEYOR'S CERTIFICATION**

I, LARRY M. GUTTARS, A REGISTERED LAND SURVEYOR IN THE STATE OF UTAH, DO HEREBY CERTIFY THAT THIS PLAT OF MESSERLY SUBDIVISION NO. 4 HAS BEEN CORRECTLY DRAWN TO THE DESIGNATED SCALE AND IS A TRUE AND CORRECT REPRESENTATION OF THE HEREIN DESCRIBED LANDS BASED ON DATA COMPILED FROM RECORDS IN THE WEBER COUNTY RECORDS OFFICE AND FROM A SURVEY MADE BY ME ON THE GROUND. I FURTHER CERTIFY THAT THE REQUIREMENTS OF WEBER COUNTY CONCERNING SURVEY REQUIREMENTS REGARDING LOT MEASUREMENTS HAVE BEEN COMPLIED WITH AND THE LOTS MEET THE SITE DEVELOPMENT STANDARDS FOR THE ZONE IN WHICH IT IS LOCATED.  
SIGNED THIS 12<sup>TH</sup> DAY OF AUGUST, 1991.  
LARRY M. GUTTARS  
2596 LICENSE NO. SIGNATURE

**OWNERS DEDICATION**

THE UNDERSIGNED OWNER OF THE HEREON DESCRIBED TRACT OF LAND, HEREBY SET APART AND SUBDIVIDE THE SAME INTO LOTS AND STREETS AS SHOWN ON THIS PLAT, AND NAME SAID TRACT MESSERLY SUBDIVISION NO. 4, AND HEREBY DEDICATE, GRANT AND CONVEY TO WEBER COUNTY, UTAH, ALL THOSE PARTS OR PORTIONS OF SAID TRACT OF LAND DESIGNATED AS STREETS, THE SAME TO BE USED AS PUBLIC THOROUGHFARES FOREVER, AND ALSO DEDICATE TO WEBER COUNTY THOSE CERTAIN STRIPS SHOWN HEREON, THE SAME TO BE USED FOR THE INSTALLATION, MAINTENANCE AND OPERATION OF PUBLIC UTILITY SERVICE LINES AND DRAINAGE AS MAY BE AUTHORIZED BY WEBER COUNTY, UTAH, WITH NO BUILDINGS OR STRUCTURES BEING ERRECTED WITHIN SUCH EASEMENTS.  
SIGNED THIS \_\_\_\_\_ DAY OF \_\_\_\_\_, 19\_\_

**ACKNOWLEDGEMENT**

STATE OF UTAH  
COUNTY OF WEBER  
ON THIS \_\_\_\_\_ DAY OF \_\_\_\_\_, 19\_\_ PERSONALLY APPEARED BEFORE ME, THE UNDERSIGNED NOTARY PUBLIC, THE SIGNER OF THE HEREON OWNER DEDICATION, WHO DULY ACKNOWLEDGED TO ME HE SIGNED IT FREELY AND VOLUNTARILY AND FOR THE PURPOSE THEREIN MENTIONED.  
\_\_\_\_\_  
COMMISSION EXPIRES \_\_\_\_\_ NOTARY PUBLIC

**WEBER COUNTY ENGINEER**

I HEREBY CERTIFY THAT I APPROVE THE REQUIRED IMPROVEMENT STANDARDS AND DRAWINGS FOR THIS SUBDIVISION AND THE AMOUNT OF FINANCIAL GUARANTEE FOR THESE IMPROVEMENTS  
SIGNED THIS \_\_\_\_\_ DAY OF \_\_\_\_\_, 1991

**WEBER COUNTY PLANNING COMMISSION APPROVAL**

THIS IS TO CERTIFY THAT THIS SUBDIVISION PLAT WAS DULY APPROVED BY THE WEBER COUNTY PLANNING COMMISSION ON THIS THE \_\_\_\_\_ DAY OF \_\_\_\_\_, 19\_\_  
\_\_\_\_\_  
CHAIRMAN  
WEBER COUNTY PLANNING COMMISSION

**WEBER COUNTY SURVEYOR**

I HEREBY CERTIFY THAT I HAVE INVESTIGATED THE LINES OF SURVEY OF THE FOREGOING PLAT AND LEGAL DESCRIPTION OF THE LAND EMBRACED THEREIN AND FIND THEM TO BE CORRECT AND TO AGREE WITH THE LINES AND MONUMENTS ON RECORD IN THIS OFFICE.  
SIGNED THIS \_\_\_\_\_ DAY OF \_\_\_\_\_, 19\_\_  
\_\_\_\_\_  
WEBER COUNTY SURVEYOR

**WEBER COUNTY ATTORNEY**

I HAVE EXAMINED THIS SUBDIVISION PLAT AND IN MY OPINION IT CONFORMS WITH THE COUNTY ORDINANCE APPLICABLE THERETO AND NOW IN FORCE AND EFFECT.  
SIGNED THIS \_\_\_\_\_ DAY OF \_\_\_\_\_, 19\_\_  
\_\_\_\_\_  
WEBER COUNTY ATTORNEY

**WEBER COUNTY COMMISSION ACCEPTANCE**

THIS IS TO CERTIFY THAT THIS SUBDIVISION PLAT AND THE DEDICATION AND FINANCIAL GUARANTEE OF PUBLIC IMPROVEMENTS THEREON ARE HEREBY ACCEPTED BY THE COMMISSIONERS OF WEBER COUNTY, UTAH THIS \_\_\_\_\_ DAY OF \_\_\_\_\_, 19\_\_  
\_\_\_\_\_  
CHAIRMAN  
WEBER COUNTY COMMISSION

WEBER COUNTY RECORDER  
ENTRY # \_\_\_\_\_ FEE \_\_\_\_\_  
FILED FOR RECORD & RECORDED  
THIS \_\_\_\_\_ DAY OF \_\_\_\_\_, 19\_\_  
AT \_\_\_\_\_ IN BOOK \_\_\_\_\_ OF \_\_\_\_\_  
PAGE \_\_\_\_\_  
WEBER COUNTY RECORDER  
BY \_\_\_\_\_ DEPUTY