

Northwest corner of Section 20, T6N, R1W, SLB&M, U.S. Survey. (Not Found - Established from Ogden City Coordinates).

West 1/4 corner of Section 20, T6N, R1W, SLB&M, U.S. Survey (Not Found - Established from Ogden City Coordinates).

N 0°47'24" E (O.C.P.) 2641.82' (O.C.P.)

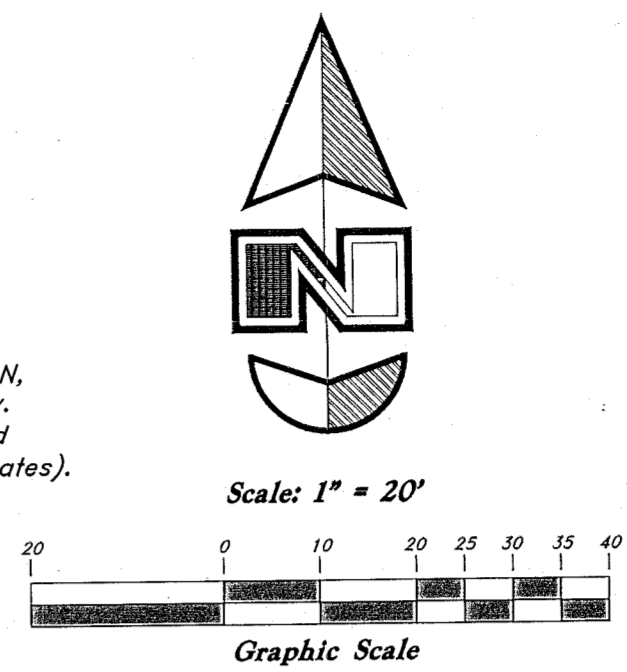
S 89°09'33" E (O.C.P.)

Found Ogden City Monument

Center of Section 20, T6N, R1W, SLB&M, U.S. Survey. (Not Found - Established from Ogden City Coordinates).

2050.20' Meas. (2049.82' O.C.P.)

2645.89' (O.C.P.)



Legend

(Note: All items may not appear on drawing)

San. Sewer Manhole	⊙	Ductile Iron	DI	Concrete	▭
Water Manhole	⊙	PVC	PVC	Spill	▭
Storm Drain Manhole	⊙	Joining Chloride	JA	Curbs & Gutter	▭
Gas Manhole	⊙	Top of Asphalt	EA	Gas Meter	⊙
Electrical Manhole	⊙	Edge of Asphalt	EA	Telephone Box	⊙
Telecommunications Manhole	⊙	Centerline	CL	Power Line	—
Catch Basins	⊙	Flowline	FL	Fiber Optic Line	—
Exist. Fire Hydrant	⊙	Finish Floor	FF	Power Pole	⊙
Water Valve	⊙	Top of Curb	CB	Centerline	—
Sanitary Sewer	—	Electrical Box	EB	Existing Building	▭
Culinary Water	—	Catch Basin	CB	Set Nail & Washer	⊙
Gas Line	—	Sewer Manhole	SMH	Set Rebar & Cap	⊙
Irrigation Line	—	Roof Drain	RD	w/ Fencepost	⊙
Storm Drain	—	Fire Hydrant	FH	Set Hub & Tack	⊙
Telephone Line	—	Water Valve	WV	Found Monument	⊙
Secondary Waterline	—	Storm Drain	SD	Found Section Corner	⊙
Power Line	—	Water Manhole	WMH	Radial Line	—
Fire Line	—	Sewer Manhole	SMH	Non-Radial Line	—
Land Drain	—	Irrigation Manhole	IMH	Public Utility Easement	▭
Utility Pole	⊙	Top of Wall	TW	Ogden City Surveyor	⊙
Utility Pole w/guy	⊙	Top of Concrete	TCN	Weber County Surveyor	⊙
Light Pole	⊙	Natural Ground	NG	W.C.S.	⊙
Fence	—	Finish Grade	FG		
Flowline of ditch	—	Fire Department Connection	FDC		
Overhead Power line	—	Exist. Contour	90		
Corrugated Metal Pipe	—	Finish Grade	95.37A		
Concrete Pipe	—	Exist. Contour	95.72A		
Reinforced Concrete Pipe	—	Ridge Line	R		
		Direction of Flow	→		
		Existing Asphalt	▨		

BOUNDARY DESCRIPTION

Parcel 1
A part of the Southwest Quarter of Section 20, Township 6 North, Range 1 West, Salt Lake Base and Meridian, U.S. Survey:

Beginning at a point on the West line of Gibson Avenue, being 596.00 feet North 0°58'00" East along the Center line of said Gibson Avenue and 30.00 feet North 89°02'00" West from the Found Ogden City Monument at the intersection of 17th Street and Gibson Avenue, and running thence North 89°02'00" West 309.04 feet to the East line of Center Street; thence North 0°58'00" East 50.00 feet along said line; thence South 89°02'00" East 309.04 feet to the West line of said Gibson Avenue; thence South 0°57'55" West 50.00 feet along said line to the point of beginning.

Contains: 0.355 acres

Parcel 2
A part of the Southwest Quarter of Section 20, Township 6 North, Range 1 West, Salt Lake Base and Meridian, U.S. Survey:

Beginning at a point on the West line of Gibson Avenue, being 745.99 feet North 0°58'00" East along the Center line of said Gibson Avenue and 30.00 feet North 89°02'00" West from the Found Ogden City Monument at the intersection of 17th Street and Gibson Avenue, and running thence North 89°02'00" West 309.04 feet to the East line of Center Street; thence North 0°58'00" East 100.00 feet along said line; thence South 89°02'00" East 309.04 feet to the West line of said Gibson Avenue; thence South 0°57'55" West 100.00 feet along said line to the point of beginning.

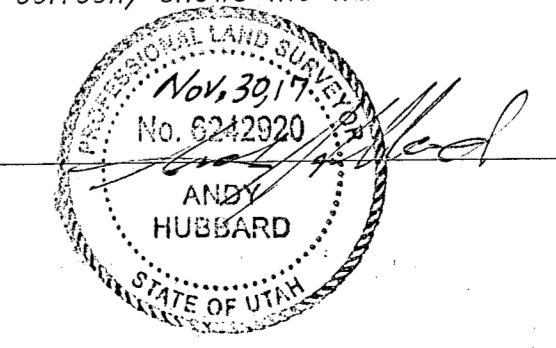
Contains: 0.709 acres

NARRATIVE

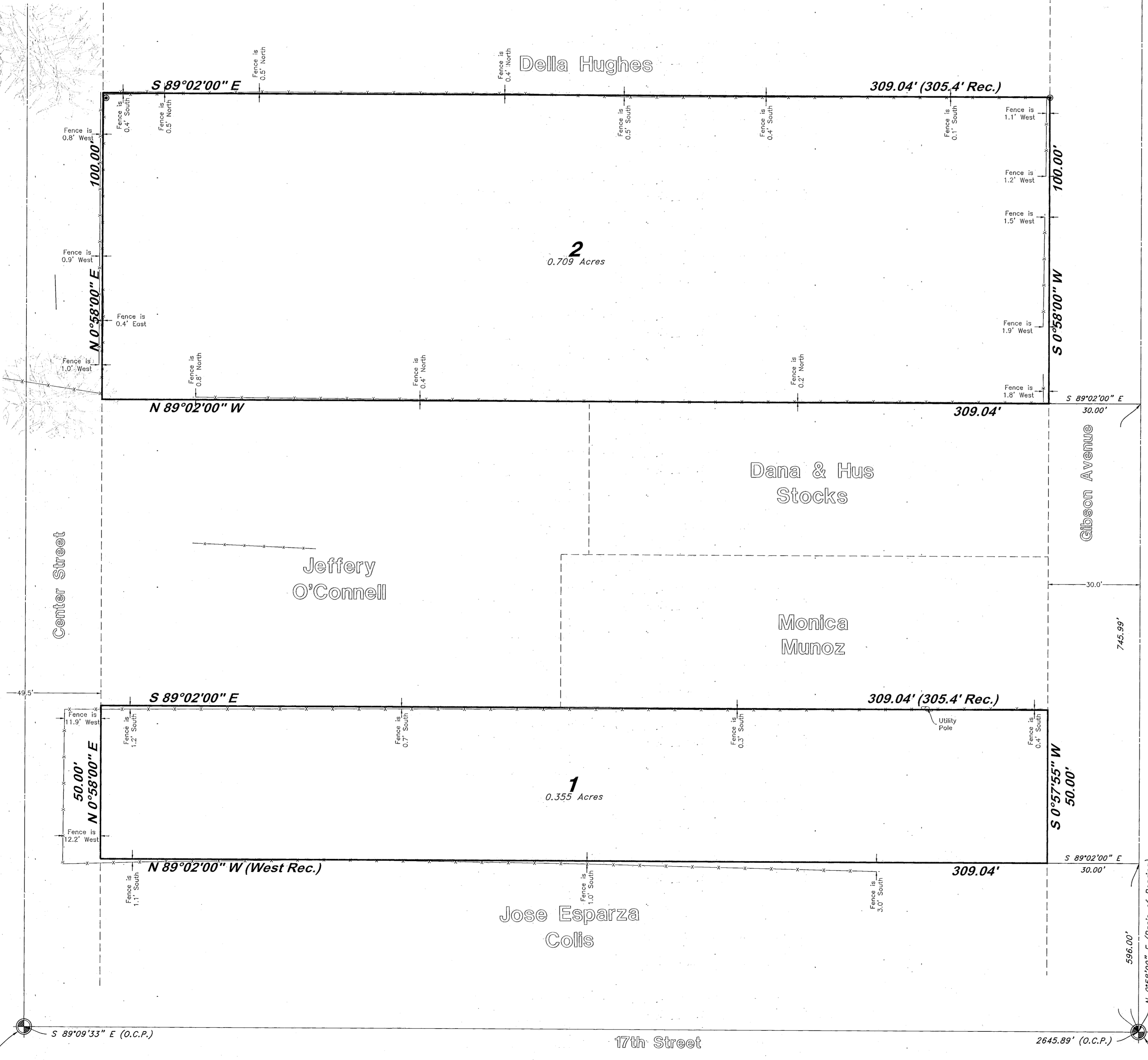
This property survey was requested by Mr. Doug Staker for the purpose of establishing an overall property boundary, the removal of existing interior lot lines, and combining the parcels into a single lot. Ogden City monuments were found at the intersections of 13th Street & Gibson Avenue and 17th Street & Gibson Avenue. A line bearing N 0°58'00" E between these two monuments was used as the basis of bearing. The recorded Ogden City Plat and a plat completed by CRS recorded August 30, 2007 as entry #003862 were used in the preparation of this document. An Economic Development Line is shown at the request of Ogden City & Weber County Recorder. Property corners were set as shown.

SURVEYOR'S CERTIFICATE

I, Andy Hubbard do hereby certify that I am a Professional Land Surveyor, and that I hold Certificate No. 6242920, in accordance with Title 58, Chapter 22, of the Professional Engineers and Surveyors Licensing Act, and I have made a survey of the above described property according to Section 17-23-17 and that the above plat correctly shows the true dimensions of the property surveyed.



RECEIVED
MAR 14 2018
BY: 5940



Ogden City Monument (Not Found - Calc'd Using Ogden City Plat)

Found Ogden City Monument at Intersection of 17th Street & Gibson Ave.

GREAT BASIN ENGINEERING
 5746 SOUTH 1475 EAST, OGDEN, UTAH 84403
 MAIN 801.461.5155, FAX 801.392.7544
 WWW.GREATBASINENGINEERING.COM

Record of Survey
Fresenius Property
 13th Street & Gibson Avenue Ogden City, Weber County, Utah
 A part of the West 1/2 of Section 20, and the East 1/2 of Section 19 T6N, R1W, SLB&M, U.S. Survey

31 Oct, 2017
 SHEET NO. **1**
 13N110