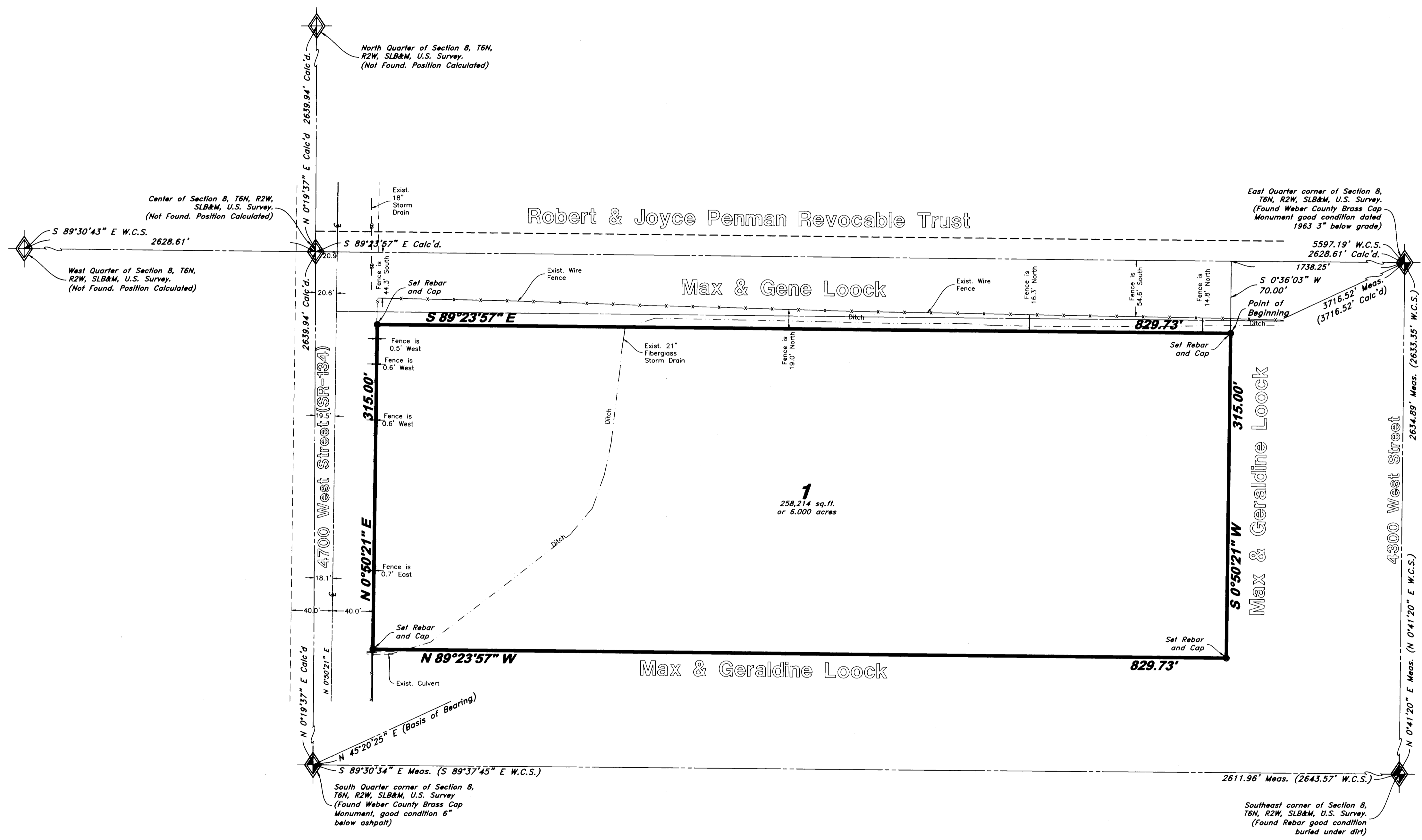


Legend

(Note: All items may not appear on drawing)

San. Sewer Manhole	SMH	Storm Drain Manhole	DMH
Water Manhole	WMH	Sewer Manhole	SMH
Storm Drain Manhole	DMH	Irrigation Manhole	IMH
Gas Manhole	GMH	Top of Wall	TW
Electrical Manhole	EMH	Top of Walk	TW
Telecommunications Manhole	TMH	Top of Concrete	TCN
Catch Basins	CB	Natural Ground	NG
Exist. Fire Hydrant	FH	Finish Grade	FC
Fire Hydrant	FH	Fire Department Connection	FDC
Exist. Water Valve	WV	Finish Contour	-90-
Water Valve	WV	Exist. Contour	-90-
Sanitary Sewer	SS	Finish Grade	95.337A
Culinary Water	CW	Exist. Grade	95.721A
Gas Line	G	Ridge Line	R
Irrigation Line	I	Direction of Flow	→
Storm Drain	SD	Existing Asphalt	ASPH
Telephone Line	TL	Concrete	CONC
Secondary Waterline	SW	Spill	SP
Power Line	P	Curb & Gutter	CG
Fire Line	F	Gas Meter	GM
Land Drain	LD	Telephone Box	TB
Utility Pole	UP	Power Line	OHP
Utility Pole w/guy	UPG	Set Nail & Washer	FN
Light Pole	LP	Set Rebar & Cap	RC
Fence	F	w/ Fencepost	RCF
Flowline of Existing ditch	FL	Set Hub & Tack	HT
Center Line	CL	Found Monument	FM
Existing Boundary	EB	Found Section Corner	SC
Overhead Power line	OP	Radial Line	(Rad.)
Corrugated Metal Pipe	CP	Non-Radial Line	(N/R)
Concrete Pipe	CP	Public Utility Easement	P.U.E.
Reinforced Concrete Pipe	RCP	Order City Surveyor	O.C.S.
Ductile Iron	DI	Weber County Surveyor	W.C.S.
Polyvinyl Chloride	PVC	Set 5/8" x 24" Long	
Top of Asphalt	TA	Rebar & Cap w/ Lathe	
Edge of Asphalt	EA		
Centerline	CL		
Flowline	FL		
Finish Floor	FF		
Top of Curb	TC		
Electrical Box	EB		
Catch Basin	CB		
Sewer Manhole	SMH		
Roof Drain	RD		
Fire Hydrant	FH		
Water Valve	WV		
Storm Drain	SD		
Water Manhole	WMH		



BOUNDARY DESCRIPTION

A part of the Southeast Quarter of Section 8, Township 6 North, Range 2 West, Salt Lake Base and Meridian, U.S. Survey, West Weber, Weber County, Utah:

Beginning at a point located 1738.25 feet North 89°23'57" West along the Quarter Section line and 70.00 feet South 0°36'03" West from the East Quarter of said Section 8, and running thence South 0°50'21" West 315.00 feet; thence North 89°23'57" West 829.73 feet to the East right of way line of 4700 West Street (SR-134); thence North 0°50'21" East 315.00 feet along said East line; thence South 89°23'57" East 829.73 feet to the point of beginning.

Contains: 6.000 acres

NARRATIVE

This Subdivision was requested by Mr. Brian Opheikens for the purpose of subdividing the existing ground to better accommodate future plans for the property.

A rebar was found at the Southeast Corner and brass cap monuments were found at the East Quarter and South Quarter corner of Section 8, Township 6 North, Range 2 West, Salt Lake Base and Meridian, U.S. Survey. Positions for the Center of Section 8 were calculated into position from county records. The Northwest Quarter of the Southeast Quarter of said Section 8 was then calculated from these positions.

Section Corners Not Found were calculated in from bisecting Section 8, Township 6 North, Range 2 West, Salt Lake Base and Meridian, U.S. Survey.

A Record of Survey for Robert Penman Dated April 22, 2008 and filed November 24, 2008; and a Record of Survey for J. Andrew Penman Dated August 10, 1988 and filed August 04, 1989 were used as reference for this plat.

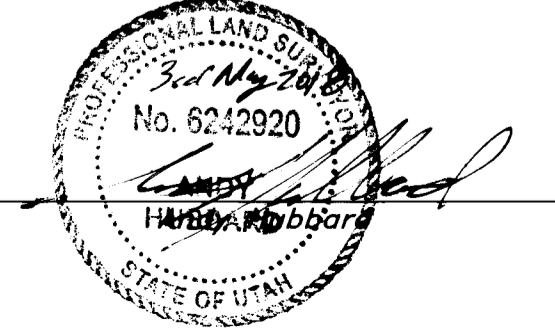
A line bearing North 45°20'25" East between the South Quarter Corner and East Quarter corner of Section 8 was used as the basis of bearings.

Property corners were monumented as depicted on this drawing.

The Right of Way for 4700 West Street was established by using Highway plan obtained from UDOT Region 1 (FAS-155-A-B_AB03, FAS-155-B(1)_AB03).

SURVEYOR'S CERTIFICATE

I, Andy Hubbard do hereby certify that I am a Professional Land Surveyor, and that I hold Certificate No. 6242920, in accordance with Title 58, Chapter 22, of the Professional Engineers and Surveyors Licensing Act, and I have made a survey of the above described property according to Section 17-23-17 and that the above plat correctly shows the true dimensions of the property surveyed.



RECEIVED
JUN 05 2018
BY: 6011

GREAT BASIN
 5746 SOUTH 1475 EAST, OGDEN, UTAH 84403
 MAIN (801) 394-4515, S.L.C. (801) 522-1022, F. (801) 394-7544
 WWW.GREATBASINENGINEERING.COM

Record of Survey
Opheikens
 Approx. 664 North 4700 West Street
 Weber County, Utah
 A part of the Southeast Quarter of Section 7, T6N, R2W, SLB&M