

VICINITY MAP
Not to Scale

NARRATIVE

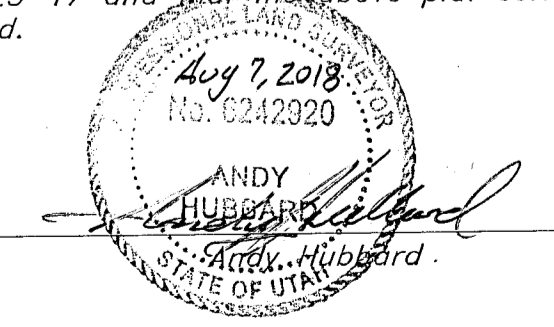
This Survey was requested by Mr. Weston Sanders for the purpose of creating an Billboard Sign Easement.
 A Line between Monuments found in the Intersection of 12th Street & Gibson Avenue and 12th Street with a bearing of North 89°23'09" East was used as the Basis of Bearings for this Survey.
 No Property Corners were set with this Survey and Boundary Lines Depicted are for reference purposes only.

EASEMENT DESCRIPTION

An Aerial Billboard Easement covering all Airspace and Ground within the following described area, being a part of the Southeast Quarter of the Northwest Quarter of Section 20, Township 6 North, Range 1 West, Salt Lake Base and Meridian, U.S. Survey, Ogden City, Weber County, Utah:
 Beginning at a point being 820.47 feet North 89°23'09" East along the Centerline of 12th Street and 130.40 feet South 0°36'51" East from the Centerline Monument located in the Intersection of said 12th Street and Gibson Avenue; and running thence South 88°42'10" East 32.00 feet; thence South 1°17'50" East 55.55 feet; thence North 88°42'10" West 32.00 feet; thence North 1°17'50" East 55.55 feet to the point of beginning.
 Contains 1,778 Sq. Ft.

SURVEYOR'S CERTIFICATE

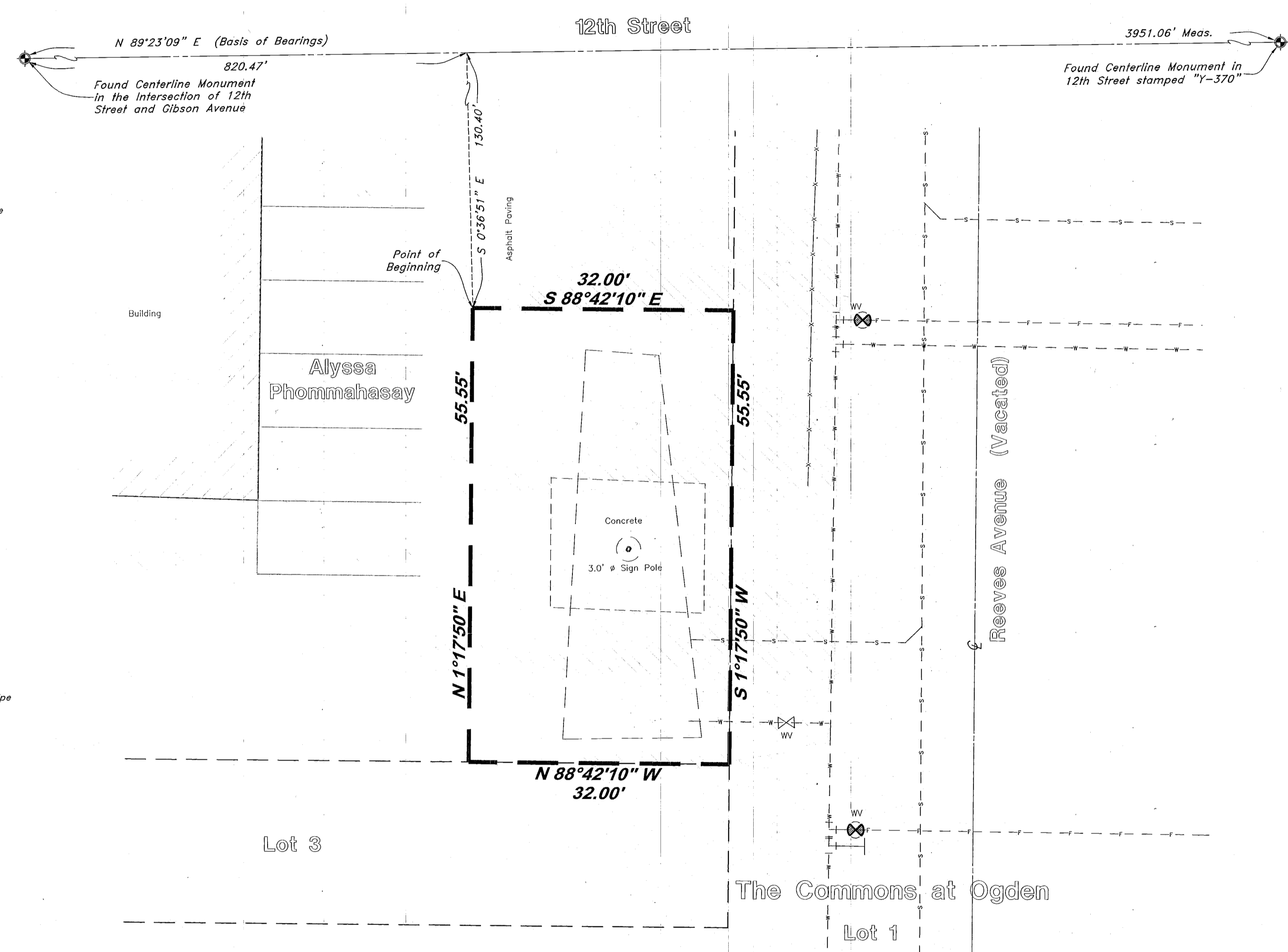
I, Andy Hubbard do hereby certify that I am a Professional Land Surveyor, and that I hold Certificate No. 6242920, in accordance with Title 58, Chapter 22, of the Professional Engineers and Surveyors Licensing Act, and I have made a survey of the above described property according to Section 17-23-17 and that the above plat correctly shows the true dimensions of the property surveyed.



RECEIVED
 SEP 11 2018
 BY: 6082

LEGEND

- C— Centerline
- UGT— Buried Telephone line
- OHT— Overhead Telephone line
- OHP— Overhead Power line
- UP— Power line
- CS— Sanitary Sewer line
- W— Culinary Water line
- G— Gas line
- SD— Storm Drain line
- SW— Secondary Waterline
- LD— Land Drain line
- IW— Irrigation Waterline
- X—X— Fence Power Meter
- Power Pole
- Post
- Water Meter
- Gas Meter
- Power Meter
- Telephone Box
- Sewer Manhole
- Drain Manhole
- Water Manhole
- Cleanout Box
- TA Top of Asphalt
- EA Edge of Asphalt
- NG Natural Ground
- LG Lip of Gutter
- SP Service Pole
- LP Light Pole
- PP Power Pole
- TP Telephone Pole
- FH Fire Hydrant
- DIT Flowline of Ditch
- TOS Top of Slope
- TOP Top of Slope
- CO Cleanout
- FC Fence
- Flowline
- DMH Drain Manhole
- x99.00 Spot Elevation
- Contour
- Asphalt
- Concrete
- Building
- Catch Basin
- C.M.P. Corrugated Metal Pipe
- R.C.P. Reinforced Concrete Pipe
- CONC. Edge of Concrete
- RWALL Retaining Wall
- SMH Sewer Manhole
- WV Water Valve
- CB Catch Basin
- DY Diversion Box
- TC Top of Curb
- SW Sidewalk
- GAS Gas line Marker
- GUY Guy Wire
- BLDG Building Corner
- Fire Hydrant
- NG Natural Ground
- WV Water Valve
- LP Light Pole
- Power Pole w/guy
- Deciduous Tree
- Coniferous Tree
- ARP Area Reference Plat
- COL Building Columns
- LS Landscaping



GREAT BASIN ENGINEERING
 5746 SOUTH 1475 EAST OGDEN, UTAH 84403
 MAIN (801)394-4515 S.L.C (801)521-0222 FAX (801)392-7544
 WWW.GREATBASINENGINEERING.COM

Record of Survey
Sanders -12th Street
 Approximately 215 West 12th Street
 Ogden City, Weber County, Utah
 A part of Section 20, T6N, R1W, S18&M, U.S. Survey

06 Aug, 2018
 SHEET NO. 1
 18N713 - ROS