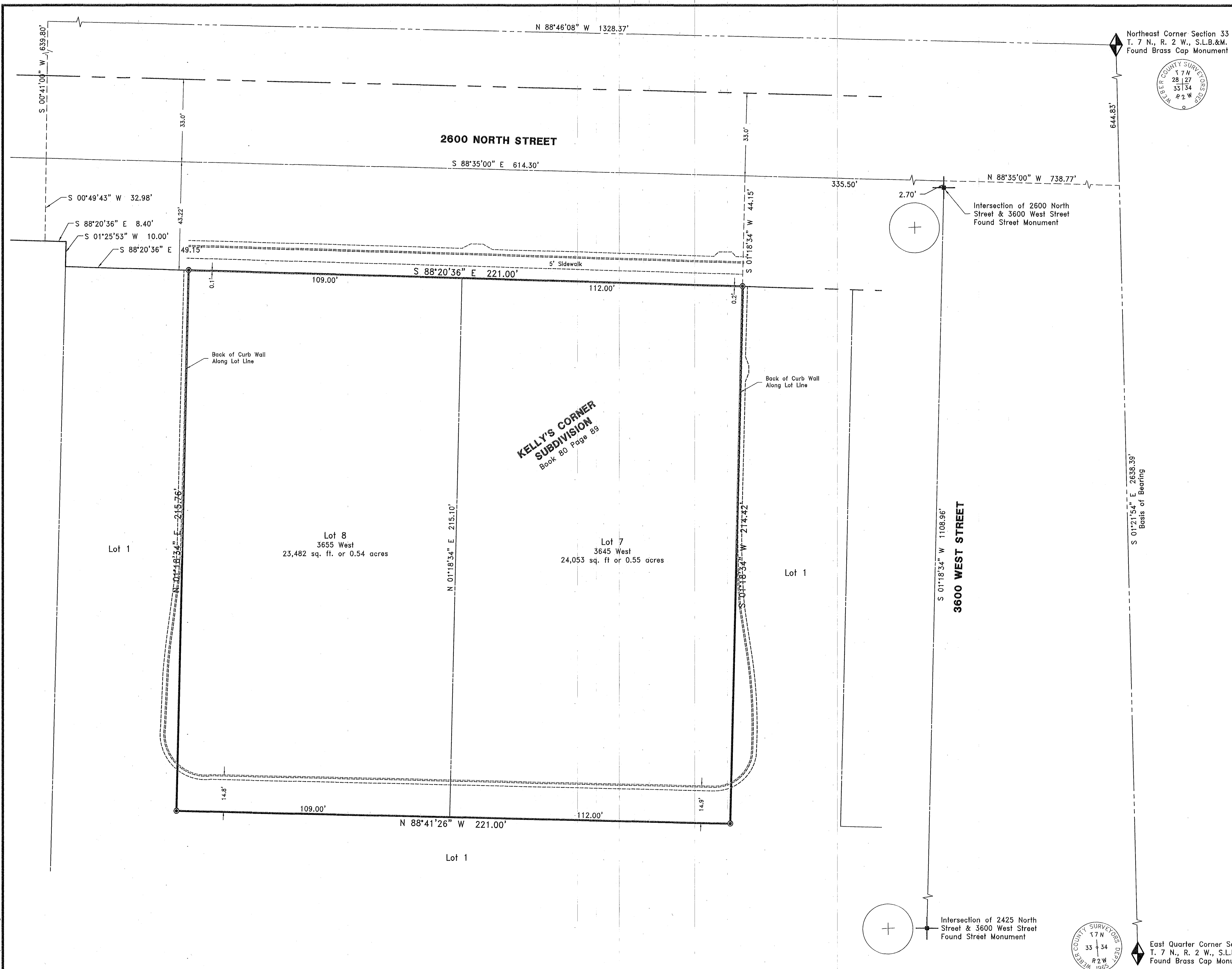
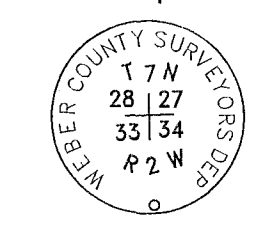


P:\AutoZone - Plain City 3044 SURVEY DRAWINGS\ROS.dwg



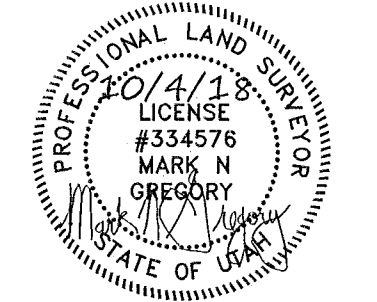
Northeast Corner Section 33 T. 7 N., R. 2 W., S.L.B.&M. Found Brass Cap Monument



SURVEYOR'S CERTIFICATE:
 I, Mark N Gregory, do hereby certify that I am a Professional Land Surveyor as prescribed by the laws of the State of Utah, and that I hold Certificate No. 334576. I further certify that this map represents the results of a field survey done under my supervision, and that the information shown hereon is true and correct to the best of my knowledge.

RECORD DESCRIPTION
 All of Lots 7 and 8, Kelly's Corner Subdivision, Plain City, Weber County, Utah.

Date October 4, 2018



Mark N Gregory
 P.L.S. No. 334576

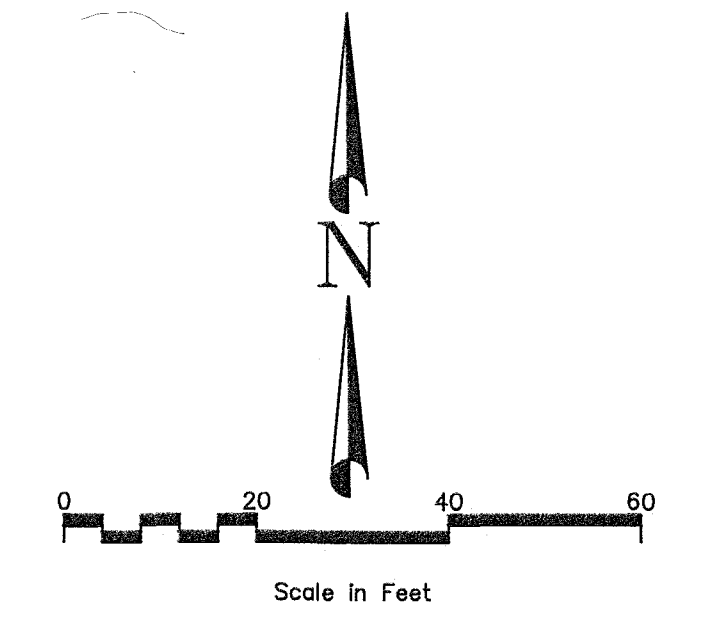
NARRATIVE:
 The purpose of this survey is to retrace Kelly's Corner Subdivision order to perform a boundary survey on Lots 7 and 8 of said subdivision to facilitate a plat amendment. The Weber County monuments found marking the Northeast and East Quarter Corners of Section 33, Township 7 North, Range 2 West, Salt Lake Base and Meridian and the street monuments found in 3600 West Street are used to control the location of said subdivision.

Record dimensions are shown in brackets [].

BASIS OF BEARING:
 The basis of bearing for this survey is South 01°21'54" East along the east line of said Section 33 per the plat of Kelly's Corner Subdivision.

LEGEND

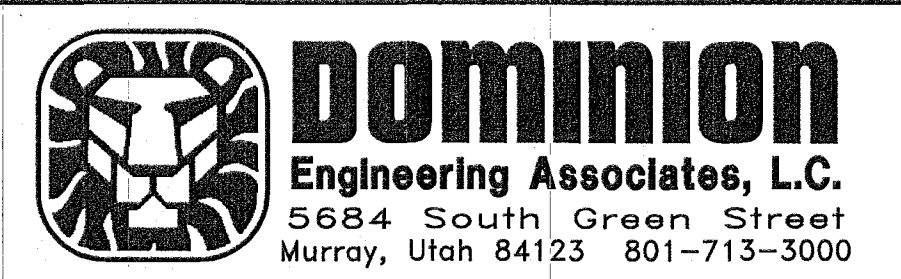
	Section Corner Monument Found (As Noted)
	Street Monument Found
	Property Boundary Line
	Right-of-Way Line
	Section Line
	Monument Line
	Easement Line
	Set Rebar W/Cap Stamped "DOMINION ENGINEERING" (Unless Otherwise Noted)
	Edge of Improvements (As Noted)



NOV 20 2018
 BY: 6136

DRAWN	MNG 9/18	CHECKED	JDP 8/18
DATE		DATE	
DESIGNED		PROJECT ENGINEER	
DATE			
APPROVED		CCA	
DATE		PROJECT MANAGER	

AUTOZONE
PLAIN CITY, WEBER COUNTY, UTAH



IN THE NE 1/4 SECTION 33, T7N, R2W, SLB&M
RECORD OF SURVEY

PROJECT NO.				3044-03
SHEET NO.				1 of 1
NO.	REVISIONS	BY	DATE	FILE NAME: ROS SCALE: 1"=20'