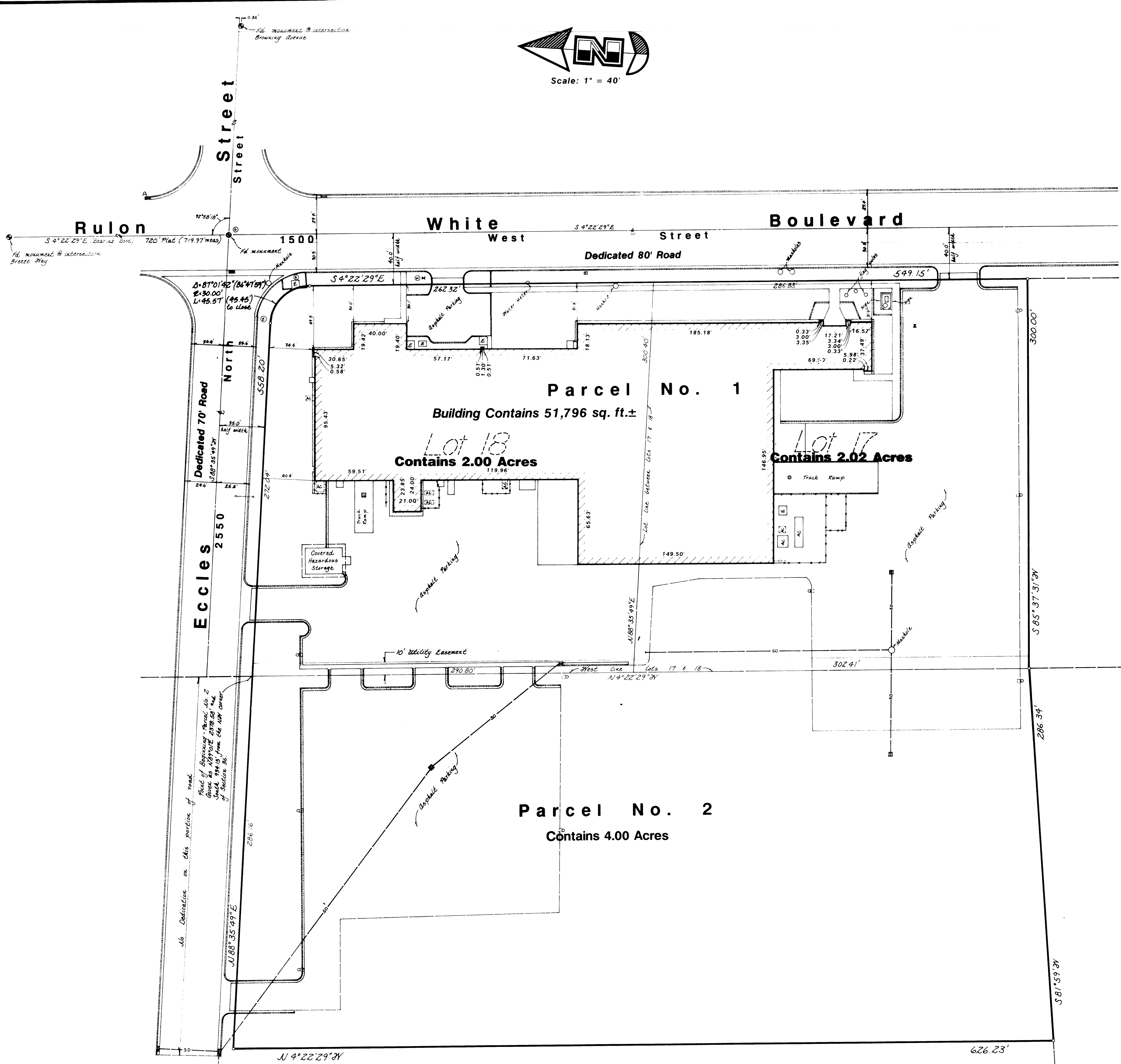
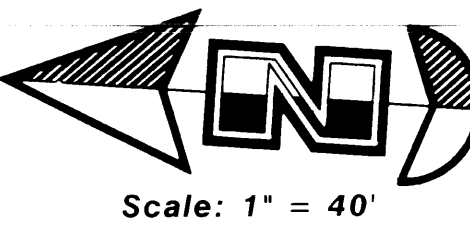


Vicinity Map
No Scale



PARCEL NO. 1
All of Lots 17 & 18, Weber Industrial Park, Plat 'A', Weber County, Utah, according to the official plat thereof, on file and of record in the Weber County Recorder's Office.

PARCEL NO. 2
Part of the Northwest Quarter of Section 36, Township 7 North, Range 2 West, Salt Lake Base and Meridian, U.S. Survey, Weber County, Utah, beginning at a point which is the Northwest Corner of Lot No. 18, Weber Industrial Park Subdivision, Plat 'A', said point also being North 89°01' East 2378.53 feet and South 934.13 feet from the Northwest corner of said Section 36, running thence South 4°22'29" East 593.21 feet along the West line of the Weber Industrial Park Subdivision, Plat 'A' to the Northeast Corner of Lot #23 in said subdivision; thence along the North line of said Lot #23, South 81°59' West 286.34 feet, thence North 4°22'29" West 626.23 feet, thence North 88°35'49" East 286.16 feet to the point of beginning.

CERTIFICATE
To Wendover Investments, Inc., and First American Title Insurance Company:
This is to Certify that this map or plat and the survey on which it is based were made in accordance with "Minimum Standard Detail requirements for ALTA/ACSM Land Title Surveys," jointly established and adopted by ALTA and ACSM in 1986; meets the accuracy requirements of a Class A Survey, as defined therein, and includes Items 2 - 5, 8 - 11 and 13 of Table 3 thereof.

Gary L. Newman
Gary L. Newman
Registered Land Surveyor
Utah #4778

NOTE:
Property is located within an area having a Zone Designation C on Flood Insurance Rate Map No. 490102, with a date of July 19, 1982, Community Panel No. 0200B, for Weber County, State of Utah.

- Legend**
- ☉ Catch Basin or Sump
 - ⊙ Sanitary Sewer Manhole
 - ⊙ Electrical Manhole
 - ⊙ Water Manhole
 - ⊙ Manhole (Type unknown)
 - ⊙ Fire Hydrant
 - ⊙ Valve
 - ⊙ Transformer Pad
 - ⊙ Telephone Junction Box
 - ⊙ Cooling Unit
 - ⊙ Light Pole
 - ⊙ Street Light Pole
 - ⊙ Street Monuments
 - ▭ Building Foundation
 - ▭ Fence
 - ▭ Edge of Asphalt
 - ▭ Sidewalk
 - ▭ 6" Curb Wall
 - ▭ Curb & Gutter
 - ▭ Concrete
 - ▭ Asphalt

NARRATIVE
This Survey was requested by Mr. Neal Weaver of Wendover Investments, Inc., in order to provide an A.L.T.A. Survey on the existing Bourn's Plant at the Weber Industrial Park. Monuments were found at the intersections of Eccles Street with Rulon White Boulevard and Breeze Way with Rulon White Boulevard. A line bearing South 4°22'29" East between these two monuments was used as the basis of bearings. No Property Corners were monumented.

GREAT BASIN ENGINEERING, INC.
CONSULTING ENGINEERS & SURVEYORS
OGDEN & SALT LAKE CITY, UTAH

Certificate of Survey for Bourn's Inc.

A part of the N.E. & N.W. 1/4 of Section 36, T7N, R2W, SLB & M, and All of Lots 17 & 18, Weber Industrial Park Plat 'A', Weber County, Utah

DATE: July 22, 1991
SCALE: 1" = 40'
PROJECT: CS-91-39

RECEIVED
OCT 22 '91
Weber County Surveyor

DRAWING NUMBER
000615

DRAWING NUMBER
000615

DRAWING NUMBER
000615

DRAWING NUMBER
000615